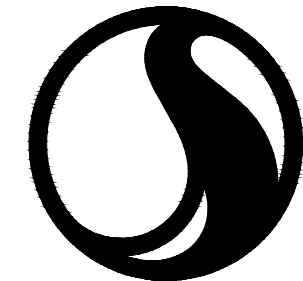


This copied document is made available for the sole purpose of enabling its consideration and review as part of a planning process under the Planning and Environment Act 1987. The document must not be used for any purpose which may breach copyright legislation



Stantec

THORNTON ENGINEERING AUSTRALIA

PAVEMENT & DRAINAGE WORKS

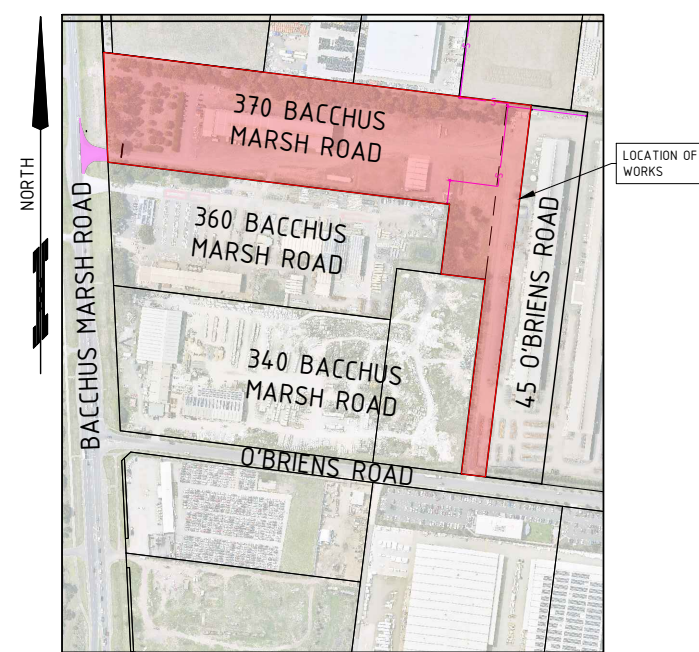
PROPOSED CAR PARK
370 BACCHUS MARSH ROAD, CORIO

INDEX

SHEET 1	REV 03	INDEX AND NOTES
SHEET 1	REV 03	INDEX AND NOTES
SHEET 2	REV 03	OVERALL LAYOUT PLAN
SHEET 3	REV 03	PAVEMENT LAYOUT PLAN (SHEET 1 OF 2)
SHEET 4	REV 03	PAVEMENT LAYOUT PLAN (SHEET 2 OF 2)
SHEET 5	REV 03	SERVICES LAYOUT PLAN (SHEET 1 OF 2)
SHEET 6	REV 03	SERVICES LAYOUT PLAN (SHEET 2 OF 2)
SHEET 7	REV 03	TYPICAL CROSS SECTIONS
SHEET 8	REV 03	KERB LONGITUDINAL SECTIONS (SHEET 1 OF 2)
SHEET 9	REV 03	KERB LONGITUDINAL SECTIONS (SHEET 2 OF 2)
SHEET 10	REV 03	OPEN DRAIN LONGITUDINAL SECTION
SHEET 11	REV 03	OPEN DRAIN CROSS SECTIONS
SHEET 12	REV 03	DRAINAGE LONGITUDINAL SECTIONS (SHEET 1 OF 5)
SHEET 13	REV 03	DRAINAGE LONGITUDINAL SECTIONS (SHEET 2 OF 5)
SHEET 14	REV 03	DRAINAGE LONGITUDINAL SECTIONS (SHEET 3 OF 5)
SHEET 15	REV 03	DRAINAGE LONGITUDINAL SECTIONS (SHEET 4 OF 5)
SHEET 16	REV 03	DRAINAGE LONGITUDINAL SECTIONS (SHEET 5 OF 5)
SHEET 17	REV 03	DRAINAGE PIT SCHEDULE & TYPICAL DETAILS
SHEET 18	REV 03	INTERSECTION DETAIL PLAN

FOR APPROVAL

- CIVIL CONTRACTOR TO CONTACT SUPERINTENDENT MINIMUM OF 7 DAYS PRIOR TO POURING ANY KERB & CHANNEL TO ENSURE THAT DRIVEWAY LOCATIONS HAVE NOT ALTERED.
 - CIVIL CONTRACTOR TO INSTALL PROPOSED PSM'S. THEY ARE TO BE SUPPLIED AND INSTALLED TO DELWP REQUIREMENTS. THEY ARE NOT TO BE PLACED IN FOOTPATH UNLESS AGREED BY COGG.
- DRAINAGE**
- PIPE DRAINAGE WITHIN ROADWAYS TO BE REINFORCED CONCRETE PIPES - CLASS 2 UNLESS OTHERWISE SHOWN.
 - ALL REINFORCED CONCRETE PIPES ARE TO BE RUBBER RING JOINTED.
 - PIPES IN EASEMENTS ARE TO BE RUBBER RING JOINTED OR UPVC SEWER CLASS PIPES WITH SOLVENT CEMENT JOINTS.
 - ALL DRAINAGE PITS IN COUNCIL RESIDENTIAL ROAD RESERVES, DRAINAGE RESERVES AND RECREATION RESERVES ARE TO HAVE LIDS THAT ARE AT LEAST CLASS C (MEDIUM DUTY) IN ACCORDANCE WITH COGG STANDARDS AND THEIR DESIGN NOTE 13.
 - ALL PITS ARE TO BE SET OUT FROM SURVEY CO-ORDINATES USING SET OUT POINTS DETAILED IN THE COGG STANDARD DRAWINGS OR AS SPECIFIED IN THIS DRAWING SET.
 - ALL PIPES UNDER FOOTPATHS, DRIVEWAYS AND BEHIND BACK OF KERB SHALL BE BACKFILLED WITH 20mm NOM SIZE CLASS 3 FINE CRUSHED ROCK (WETMIX) COMPACTED TO 95% MODIFIED COMPACTION IN 150mm MAXIMUM LAYERS.
 - CONTRACTOR TO USE 2% CEMENT STABILISED SAND FROM THE BOTTOM OF THE STORMWATER PIPE TO THE SPRINGLINE WHEN DRAINAGE IS CONSTRUCTED UNDER THE ROAD. CLASS 3 CRUSHED ROCK TO BE USED FOR BACKFILL FROM THE SPRINGLINE TO THE PAVEMENT SUB-BASE.
 - PIPEWORK AT ALL PITS TO BE WELL ALIGNED TO ENSURE FLOW IS GUIDED DIRECTLY TO OUTLET PIPE.
 - ALL PIPELINES ARE TO BE INSPECTED VIA CCTV AT PRACTICAL COMPLETION AT THE CONTRACTOR'S EXPENSE AND UNDER THE SUPERVISION OF COGG SUBDIVISIONS ENGINEER OR REPRESENTATIVE.
 - PROPERTY INLET PITS TO BE LOCATED 1M FROM THE LOW CORNER UNLESS OTHERWISE SHOWN.
 - HOUSE DRAINS ARE TO BE 100mm DIAMETER SEWER CLASS PVC SOCKETED PIPES LOCATED 6.5m FROM THE LOW CORNER OF THE LOT UNLESS OTHERWISE SHOWN. OPTION "No. 1" IS TO CONNECT TO A PIT, "No.2" IS TO CONNECT TO THE UNDERGROUND DRAINAGE PIPE AND "No.3" IS TO KERB (MINIMUM 10m AWAY FROM EDGE OF VEHICLE LAYBACK).
 - HOUSE DRAINS ARE TO BE A MINIMUM OF 0.5m BELOW FINISHED SURFACE AT THE LOT BOUNDARY UNLESS OTHERWISE SHOWN.
 - EASEMENT DRAIN CONNECTION TO BE A MINIMUM OF 0.5m BELOW FINISHED SURFACE UNLESS OTHERWISE SHOWN.
 - WHEN USING 150mm DIAMETER UPVC SEWER CLASS PIPES IN EASEMENTS FOR PRIVATELY OWNED PROPERTIES, THE HOUSE DRAINS ARE TO BE CONNECTED USING STANDARD T-PIECE FITTINGS.
 - WHEN USING 225mm DIAMETER OR LARGER UPVC PIPES, HOUSE DRAINS ARE TO BE CONNECTED IN A SIMILAR WAY TO CONCRETE PIPES SUBJECT TO THE INLET BEING CORE DRILLED.
 - WATER AND GAS SERVICE CONDUITS SHALL BE LOCATED CLEAR OF ALL DRIVEWAY CROSSINGS AND SHALL EXTEND FROM THE POINT OF SUPPLY TO AT LEAST 500mm INSIDE THE HOUSE LOT TO BE SERVICED AND LEFT EXPOSED UNTIL INSPECTED BY COGG SUBDIVISIONS ENGINEER. WATER CONDUITS ARE TO BE LOCATED AT LEAST 6.5m FROM SIDE BOUNDARY. GAS CONDUITS ARE TO BE LOCATED 2m FROM "NON-DRIVEWAY" SIDE BOUNDARY OF LOT TO BE SERVICED. CONDUIT TRENCHES ARE TO BE BACKFILLED WITH CLASS 3 FCR. NEXT TO WATER CONDUIT IS PREFERRED.
 - THE LOCATION OF HOUSE DRAINS (H) AND SERVICE CONDUITS (W, G, T, AND E) ARE TO BE NEATLY ETCHED ON THE KERB FACE WITH 50mm HIGH LETTERS.
 - IN ROAD RESERVE EXISTING OPEN DRAINS ARE TO BE CLEANED OUT TO AN APPROVED BASE AND ANY SPOIL IS TO BE REMOVED FROM THE SITE. STRUCTURAL FILL (CLASS 4 MINIMUM) IS TO BE PLACED IN NOT MORE THAN 150mm LAYERS AND COMPACTED TO A MINIMUM OF 98% STANDARD COMPACTION. COMPACTION TESTS ARE TO BE PROVIDED TO THE SATISFACTION OF COGG SUBDIVISIONS ENGINEER OR REPRESENTATIVE.
 - ALL SUMPS IN PRE-CAST CONCRETE PITS ARE TO BE FILLED WITH CONCRETE FLUSH TO THE INVERT LEVEL OF THE OUTLET PIPE, UNLESS APPROVED OTHERWISE BY THE COUNCIL WORKS INSPECTOR.
 - ALL DRAINAGE PIT LIDS ARE TO BE FIBRE REINFORCED PLASTIC (FRP) OR APPROVED EQUIVALENT TO THE REQUIRED CLASS LOADING, ALL DRAINAGE PITS WITHIN THE PAVEMENT ARE TO BE CLASS D GATIC. REFER COGG STANDARDS AND THEIR DESIGN NOTE 13.
 - BEDDING, LAYING, JOINTING, AND BACKFILLING OF ALL STORMPRO PIPES TO COMPLETED IN ACCORDANCE WITH AS/NZS 2566.2.
 - CONCRETE FOR STORMWATER PITS AND ANY OTHER STORMWATER RELATED STRUCTURE IS TO HAVE A MINIMUM STRENGTH OF 25MPA AT 28 DAYS IN ACCORDANCE WITH IDM STANDARDS.



LOCALITY PLAN
N.T.S



STANDARD NOTES

- ALL WORKS IN THIS CONTRACT ARE TO BE CONSTRUCTED IN ACCORDANCE WITH THE CURRENT STANDARD DRAWINGS AND SPECIFICATIONS OF THE RELEVANT RESPONSIBLE AUTHORITIES. ANY DISPUTE THAT ARISES AT ANY TIME UNTIL THE RESPONSIBLE AUTHORITIES ACCEPT THE WORKS FOR FUTURE CARE AND MAINTENANCE, THE STANDARD DRAWING AND SPECIFICATION WILL TAKE PRECEDENCE OVER THE CONSTRUCTION PLAN.
- ALL ROADWORKS SIGNAGE IS TO BE IN ACCORDANCE WITH VICROADS WORKSITE TRAFFIC MANAGEMENT CODE OF PRACTICE INCORPORATING AS 1742.3.

SITE MANAGEMENT

- ALL WORKS ARE TO BE UNDERTAKEN IN ACCORDANCE WITH THE APPROVED CONSTRUCTION MANAGEMENT PLAN.
- ALL TREES, SHRUBS ETC ARE TO BE RETAINED UNLESS OTHERWISE INDICATED.
- DURING THE CONSTRUCTION AND MAINTENANCE PERIOD SILT FENCES ARE TO BE PLACED DOWNSTREAM OF ALL EXPOSED AREAS, AND SILT BARRIERS ARE TO BE PLACED UPSTREAM OF ALL PITS. THE SILT FENCES AND SILT BARRIERS ARE TO BE CHECKED AND MAINTAINED UNTIL THE END OF THE MAINTENANCE PERIOD.
- ALL AREAS OF THE SUBDIVISION EXPOSED OF VEGETATION, INCLUDING NATURESTRIPS, LOTS AND RESERVE ARE TO BE FULLY GRASSED BY HYDROMULCHING, WATERING AND MAINTAINED UNTIL THE END OF THE MAINTENANCE PERIOD.

GENERAL

- THE CONTRACTOR SHALL:
 - GIVE 5 DAYS NOTICE IN WRITING TO COGG SUBDIVISIONS ENGINEER OR REPRESENTATIVE PRIOR TO THE COMMENCEMENT OF WORKS.
 - NOTIFY COGG SUBDIVISIONS ENGINEER OR REPRESENTATIVE 24 HOURS PRIOR TO WORKING ON ANY WEEKEND.
 - BE FULLY AWARE OF ALL SITE CONDITIONS PRIOR TO TENDERING.
 - BE RESPONSIBLE FOR LOCATING ALL EXISTING SERVICES PRIOR TO THE COMMENCEMENT OF WORKS AND SHALL BE RESPONSIBLE FOR ANY DAMAGE TO THE SERVICES.
 - BE RESPONSIBLE FOR THE INSTALLATION OF ALL SERVICES REQUIRED FOR THE PROJECT.
 - ENSURE THAT ALL SERVICES ARE INSTALLED TO THE SPECIFIED OFFSETS AND MEETS MINIMUM COVER REQUIREMENTS. ALL SURFACE FIXTURES, PITS, VALVES, FIREPLUGS, ETC. SHALL BE INSTALLED A MINIMUM OF 6.0m FROM ANY SIDE BOUNDARY IN THE ROAD RESERVE AND SHALL MATCH THE REQUIRED FINISHED SURFACE LEVEL. THIS APPLIES TO ALL SERVICES REQUIRED FOR THE PROJECT IRRESPECTIVE IF THEY ARE INSTALLED BY THE CONTRACTOR OR OTHERWISE.
 - COMPLY WITH THE REQUIREMENTS OF THE MINES ACT 1958 AND RELEVANT REGULATIONS INCLUDING NOTIFICATION IN WRITING (CLAUSE 385) TO THE CHIEF MINING INSPECTOR OF THE INTENTION TO COMMENCE EXCAVATION OPERATIONS WHERE ANY TRENCH IS 1.5m OR MORE IN DEPTH.
 - GIVE 24 HOURS NOTICE TO COGG SUBDIVISIONS ENGINEER OR REPRESENTATIVE PRIOR TO BACKFILLING OF ANY PIPE TRENCHES OR LAYING OF ANY PAVEMENT OR CONCRETE WORKS SO THAT THE WORKS CAN BE CHECKED AND APPROVED.
 - COMPLY WITH THE OCCUPATIONAL HEALTH AND SAFETY (CONFINED SPACES) REGULATIONS AND CODE OF PRACTICE FOR CONFINED SPACES.
 - BE RESPONSIBLE FOR THE COMPACTION AND/OR ANY OTHER REQUIRED TESTING OF THE PAVEMENT MATERIAL BY AN APPROVED GEOTECHNICAL CONSULTANT AS AND WHEN DIRECTED BY COGG SUBDIVISIONS ENGINEER OR REPRESENTATIVE.
- ANY WORKS WITHIN ROADWAYS SHALL SATISFY COUNCIL'S "REQUIREMENTS FOR OCCUPANCY OF ROAD RESERVE". CONTACT COGG TRAFFIC MANAGEMENT OFFICER ON TELEPHONE (03) 52724384 FOR FURTHER SPECIFIC DETAILS RELATING TO THIS PROJECT. A COPY OF THE TRAFFIC MANAGEMENT PLAN IS TO BE FORWARDED TO THE COGG SUBDIVISIONS ENGINEER OR REPRESENTATIVE PRIOR TO WORKS COMMENCING.
- ALL REASONABLE CARE SHALL BE TAKEN BY THE CONTRACTOR TO PRESERVE THE SURVEY PEGS. ANY REINSTATEMENT OF BOUNDARY PEGS FOR CONSTRUCTION IS THE RESPONSIBILITY OF THE CONTRACTOR. BENCHMARK VALUES ARE VALID FOR 6 MONTHS FROM THE ISSUED DATE OF THE SURVEY AND ARE TO BE CHECKED BY THE CONTRACTOR PRIOR TO COMMENCEMENT OF WORKS AND ANY DISCREPANCIES OR INVALID VALUES ARE TO BE REPORTED IMMEDIATELY.
- ALL DIMENSIONS ARE IN METRES AND LEVELS ARE TO AUSTRALIAN HEIGHT DATUM (A.H.D.)
- ALL SEWER MANHOLES LOCATED UNDER NEW FOOTPATH TO HAVE OFFSET COVER ROTATED AND LEVELS ADJUSTED SO THAT THE COVERS ARE ENTIRELY LOCATED WITHIN THE FOOTPATH WITH APPROPRIATELY POSITIONED JOINTS IN PATH AND FLUSH WITH SURFACE.

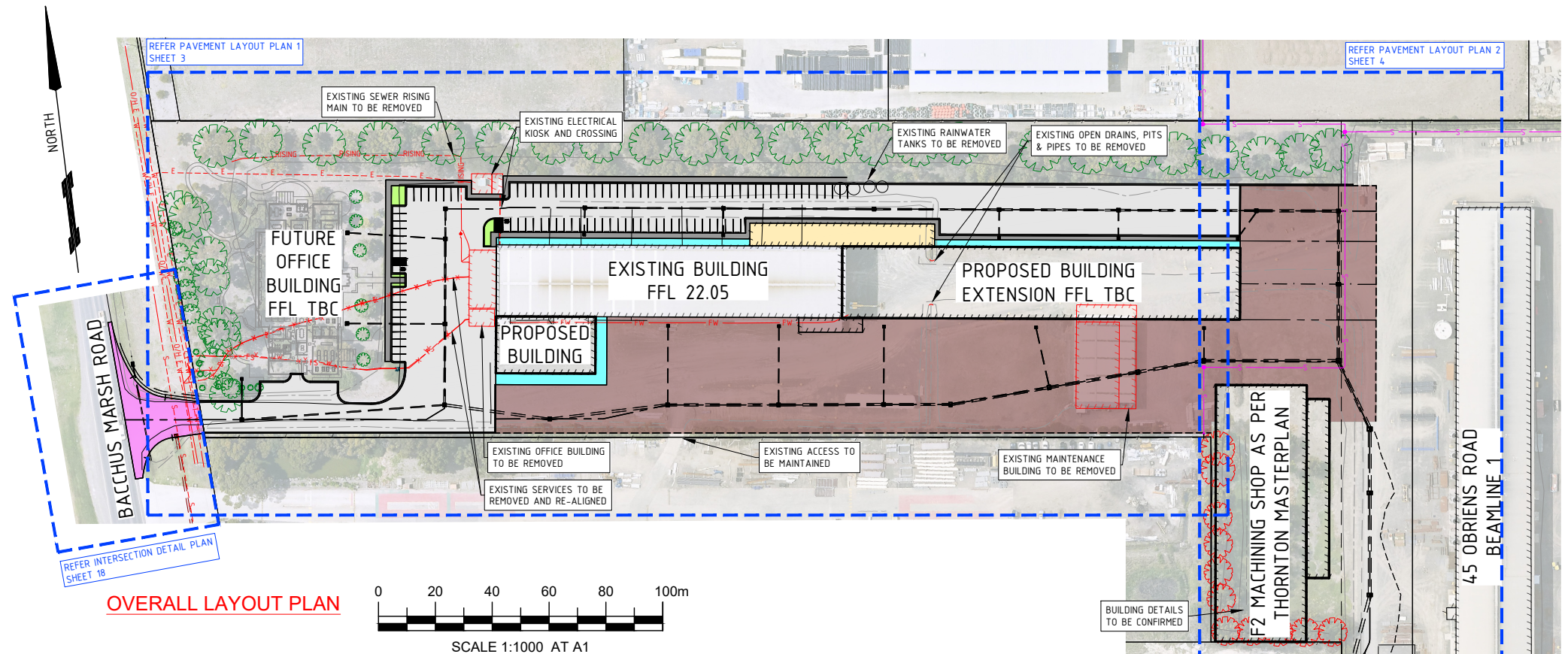
ROADWORKS

- SUBSOIL DRAINS ARE TO BE CONSTRUCTED BEHIND THE KERB AND CHANNEL OR AS DIRECTED BY THE COGG SUBDIVISIONS ENGINEER OR REPRESENTATIVE AND ARE TO BE IN ACCORDANCE WITH THE IDM.
- WHERE DRAINAGE LINES EXIST BEHIND THE KERB AND CHANNEL SUBSOIL DRAINAGE IS NOT REQUIRED HOWEVER A 1m LENGTH OF SUBSOIL DRAIN INCLUDING FILTER SOCK IS REQUIRED BOTH SIDES OF DRAINAGE PITS.
- ALL FOOTPATHS ARE REQUIRED TO BE A MINIMUM 32MPa (IN32) IN STRENGTH. THEY ARE TO BE A MINIMUM OF 125mm THICK WITH SL 72 REINFORCEMENT AND BEDED ON A MINIMUM OF 100mm COMPACTED CLASS 3 FCR WITH THE BEDDING TO EXTEND 75mm BEYOND THE EDGES OF THE PROPOSED FOOTPATH PRIOR TO THE PLACEMENT OF THE TIMBERS AND BOARDS. CONTRACTION OR EXPANSION JOINTS ARE TO BE CONSTRUCTED BETWEEN 10 TO 15 METER INTERVALS. WEAKENED PLANE JOINTS ARE TO BE CONSTRUCTED AT 1200mm SPACING.
- WHERE MINOR FILLING IS REQUIRED UNDER THE FOOTPATH BEDDING MATERIAL THEN CLASS 4 (MINIMUM) FCR IS TO BE USED, UNLESS OTHERWISE APPROVED BY THE COGG SUBDIVISIONS ENGINEER. WHERE SIGNIFICANT FILLING IS REQUIRED UNDER THE FOOTPATH BEDDING MATERIAL THEN CONTROLLED FILL IS EXTENDED AS PART OF LOTS FILLING WORKS USING THE SAME METHOD AND MATERIAL, UNLESS OTHERWISE STATED. WHEN SEWER IS PRESENT UNDER FOOTPATH REFER IDM SD 310.
- CONCRETE FOR KERB AND CHANNEL USED IN EXTRUSION MACHINES SHALL HAVE A MINIMUM CEMENT CONTENT OF 280 KG/M3 IN LOCAL STREETS AND 320 KG/M3 IN TRAFFIC ROUTES. REFER VICROADS STANDARD SPECIFICATION 703.
- CONCRETE PAVEMENT STRENGTH REQUIREMENTS ARE TO ADHERE TO AUSTRROADS GUIDE TO PAVEMENT TECHNOLOGY 2010 AND THE GUIDE TO STRUCTURAL DESIGN OF ROAD PAVEMENTS 2006, WITH A MINIMUM 20-YEAR DESIGN LIFE.
- CONCRETE FOR ALL OTHER APPLICATIONS IS TO HAVE A MINIMUM STRENGTH OF 25 MPA AT 28 DAYS.
- AN APPROPRIATE CURING METHOD IN ACCORDANCE WITH AUSTRALIAN STANDARDS MUST BE EMPLOYED FOR ALL CONCRETE INFRASTRUCTURE. APPROPRIATE DOCUMENTATION FOR TESTING AS PER AS 1379 AT HANDOVER INSPECTION IS TO BE PROVIDED. REFER COGG STANDARDS AND THEIR DESIGN NOTE 12.
- TO ALLOW FOR A CONTINUOUS CONCRETE KERB AND CHANNEL POUR THE STORMWATER PIT CONCRETE SURROUND IS TO BE IN PLACE PRIOR TO THE POUR COMMENCING. IF THE PIT SURROUNDS ARE NOT IN PLACE THEN THE INITIAL KERB AND CHANNEL POUR IS TO STOP ONE METRE EITHER SIDE OF EVERY PIT.
- PRIOR TO ANY FILLING ON LOTS ALL TOPSOIL IS TO BE REMOVED AND STOCKPILED. THE FILL MUST BE APPROVED AND CONSOLIDATED IN 150mm COMPACTED LAYERS TO A DRY DENSITY OF 95% STANDARD COMPACTION IN ACCORDANCE WITH AS1289. THE TOPSOIL IS THEN TO BE UNIFORMLY REPLACED TO A COMPACTED DEPTH OF 100mm. COMPACTION TESTING WILL BE REQUIRED AT THE DISCRETION OF THE COGG SUBDIVISIONS ENGINEER OR REPRESENTATIVE.
- ALLOTMENTS SHALL BE GRADED TO AN EVEN SURFACE AT THE COMPLETION OF ALL WORKS AND SHALL HAVE A MINIMUM GRADE OF 1 IN 200 (IDM) TO THEIR NOMINATED DRAINAGE CONNECTION POINTS. ALL SURPLUS SPOIL, BOXTHORN, FENCING, CONSTRUCTION WASTE AND OTHER RUBBISH SHALL BE REMOVED FROM SITE AT THE COMPLETION OF WORKS.
- BATTER SLOPES ON LOTS SHALL BE A MAXIMUM OF 1 IN 6 FOR FILL AND 1 IN 4 FOR CUT UNLESS OTHERWISE SHOWN.
- TIMBER RAIL AND POST (0.6m HIGH) OR AS APPROVED BY COUNCIL PARKS/RECREATION AND OPEN SPACE/ENVIRONMENT DEPARTMENTS ARE TO BE PLACED ACROSS THE RESERVE FRONTAGE. REFER TO COUNCIL STANDARD DRAWING COGG 709. DEMONSTRABLE SECTION FOR VEHICLE ACCESS TO COUNCIL STANDARDS, REFER STANDARD DRAWING COGG702 & COGG703.
- STREET SIGNS ARE TO BE LOCATED AS INDICATED ON THE PLANS AND INSTALLED IN ACCORDANCE WITH VICROADS TRAFFIC ENGINEERING MANUAL VOLUME 2. MOUNTING HEIGHT IS TO BE TO THE UNDERSIDE OF THE SIGN AND IS TO BE A MINIMUM OF 2.1m AND MAXIMUM OF 3.0m.
- 'NO THROUGH ROAD' SIGN IS TO BE INSTALLED BELOW THE STREET SIGN WHERE APPLICABLE.
- ALL REINFORCEMENT USED IN CONCRETE WORKS FOR FOOTPATH DRIVEWAYS AND ROADS IS TO BE ADEQUATELY SUPPORTED BY APPROPRIATE SIZED BAR CHAIRS PRIOR TO THE POURING/PLACEMENT OF CONCRETE.
- AT THE TERMINATION OF STAGED PAVEMENT CONSTRUCTION, A CONCRETE EDGE STRIP 200mm X 200mm AND SUBSOIL DRAIN IS TO BE INSTALLED ACROSS THE WIDTH OF THE PAVEMENT AND A CHEVRON MARKER SIGN IS TO BE INSTALLED ACROSS THE FULL WIDTH OF THE ROAD RESERVE. APPROPRIATE RETAINING WALLS/FENCING IS TO BE PROVIDED AS DIRECTED BY COGG SUBDIVISIONS ENGINEER OR REPRESENTATIVE.
- WHERE LINE MARKING NEEDS TO BE REMOVED, THESE LINES ARE TO BE PERMANENTLY REMOVED EITHER BY GRINDING THE OLD LINES OFF OR BY PLACING A SEAL AND GRIT TREATMENT (USING THE 'FLOCON' SYSTEM) OVER THE UNWANTED LINES.
- LOT NUMBERS SHALL BE STENCILED IN 50mm HIGH FIGURES WITH WHITE PAINT ON THE FACE OF THE KERB AND CHANNEL.

ISSUE	ISSUED FOR	DRAWN	APPROVED	DATE	ISSUE	ISSUED FOR	DRAWN	APPROVED	DATE	DESIGNED: A. SHIELS	DATE: SEPTEMBER 2024	<p>ABN 17 007 820 322 Level 1, Myers Street (PO Box 1137) Geelong, VIC Australia 3220 Phone +61 3 5202 4600 Fax +61 3 5202 4601 Web: www.stantec.com</p>	CLIENT: THORNTON ENGINEERING AUSTRALIA P.O. BOX 245 CORIO, VIC, 3214	PROJECT: PAVEMENT AND DRAINAGE WORKS PROPOSED BUILDING EXTENSION THORNTON ENGINEERING AUSTRALIA 370 BACCHUS MARSH ROAD, CORIO, VIC, 3214 CITY OF GREATER GEELONG	CIVIL DRAWING
01	FOR APPROVAL	A.S.	G.R.	01/10/2024						CHECKED: I. REGUSCI	SHEET SIZE: A1		DRAWING TITLE: INDEX AND NOTES		
02	FOR APPROVAL	A.S.	G.R.	06/12/2024						APPROVED: G. ROACHE	SURVEY: STANTEC GEELONG	Stantec REF. No: 304400900-201			
03	FOR APPROVAL	G.R.	G.R.	24/11/2025						PE VIC No: PE0009117	POS NO: N/A	SHEET: 1 OF 18			
										SIGNED: <i>[Signature]</i>	PERMIT NO: PP-1342-2022	REV: 03			

PROPOSED	
	KERB AND CHANNEL
	FOOTPATH
	ASPHALT PAVEMENT
	ENTRANCE PAVEMENT
	HARDSTAND
	INTERNAL WALK WAY
	PRODUCTION OFFICE
	STORMWATER DRAINAGE PIPE/PIT
	TOP OF BATTER
	TOE OF BATTER
	BUILDING

EXISTING	
	TITLE
	EASEMENT
	OVERHEAD ELECTRICAL
	ELECTRICAL
	SEWER
	WATER
	GAS
	FIRE SERVICE
	FIRE SERVICE (TO REMOVE)
	SEWER RISING MAIN (TO REMOVE)
	WATER (TO REMOVE)
	ELECTRICAL (TO REMOVE)
	COMMUNICATIONS (TO REMOVE)
	STORMWATER DRAINAGE PIPE/PIT
	OPEN DRAIN
	VEGETATION (TO REMAIN)
	VEGETATION (TO REMOVE)
	FENCE



NOTE
 THESE DRAWINGS ARE TO BE READ IN CONJUNCTION WITH
 MORTON DUNN ARCHITECTURAL DRAWINGS 21058
 15/03/2023.

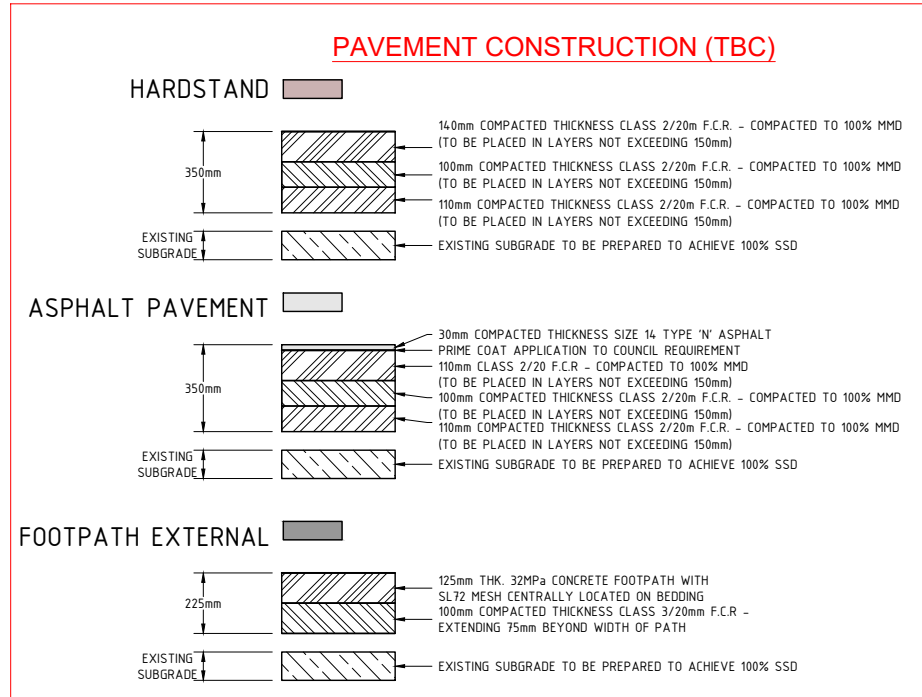
WARNING
 BEWARE OF UNDERGROUND SERVICES
 THE LOCATIONS OF UNDERGROUND SERVICES ARE APPROXIMATE ONLY AND THEIR EXACT POSITION SHOULD BE PROVEN ON SITE. NO GUARANTEE IS GIVEN THAT ALL EXISTING SERVICES ARE SHOWN.

WARNING
 BEWARE OF ABOVE GROUND SERVICES
 ANY EXCAVATION IN THE VICINITY OF POWER POLES TO BE IN ACCORDANCE WITH THE ELECTRICAL SAFETY (NETWORK ASSETS) REGULATIONS 1999 - RULE 36 (d). NO GO ZONE RULES MAY ALSO APPLY.

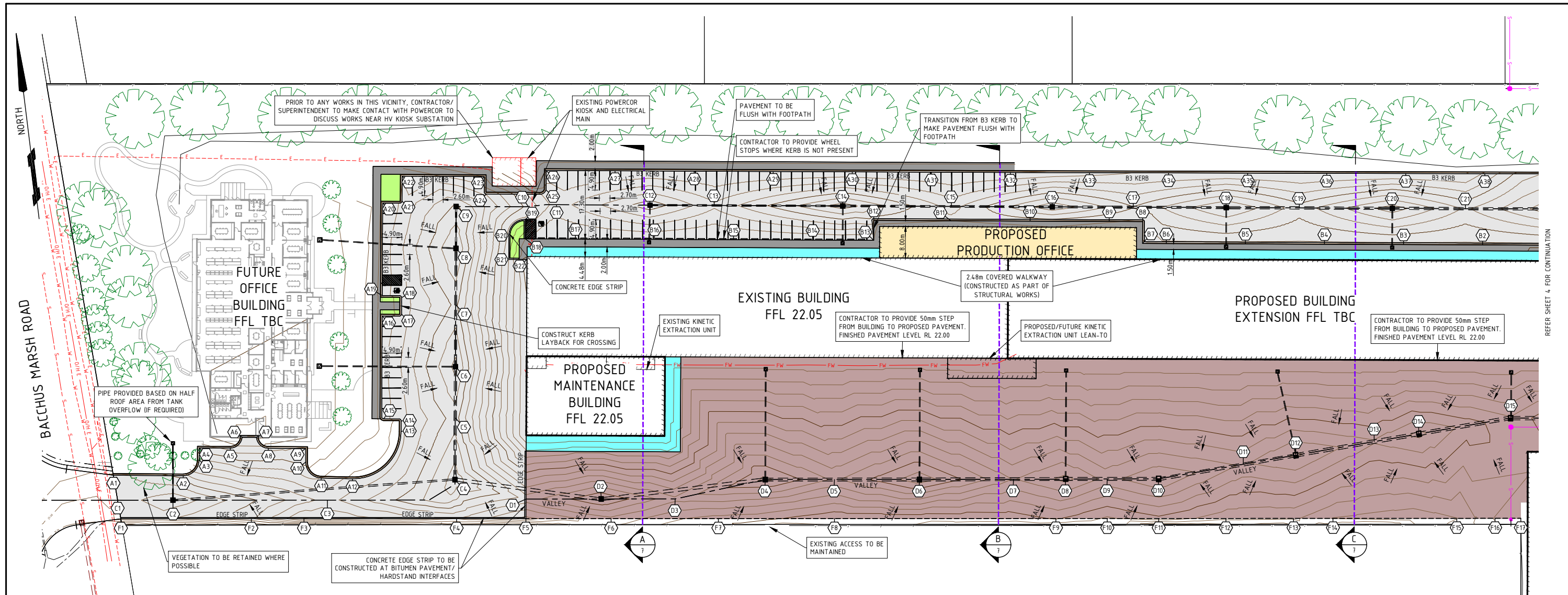


SURVEY CONTROL POINTS DATE OF SURVEY: 30/11/2022 MGA 94 ZONE 55			
DESCRIPTION	PLANE EASTING	PLANE NORTHING	AHD LEVEL
TBM 1 - CONCRETE NAIL	268733.37	5785060.50	21.65
TBM 2 - CONCRETE NAIL	268832.96	5785049.15	21.31
TBM 3 - RIVET	268902.03	5785041.49	20.42
TBM 4 - SPIKE	268931.71	5784982.95	20.89
TBM 5 - RIVET	268895.03	5784960.50	20.60
TBM 6 - RIVET	268882.53	5784863.73	20.57
TBM 7 - RIVET	268877.12	5784814.37	20.60
TBM 8 - CONCRETE NAIL	268874.76	5784687.10	19.80
TBM 9 - SPIKE	268905.50	5784691.03	19.78
TBM 10 - RIVET	268883.70	5784681.41	19.76
TBM 11 - RIVET	268909.32	5784675.02	19.56
TBM 12 - RIVET	268781.55	5784690.84	19.78

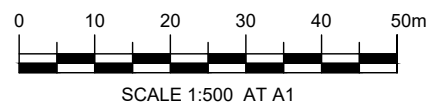
PERMANENT SURVEY MARKS			
DESCRIPTION	MGA94 ZONE55 EASTING	MGA94 ZONE55 NORTHING	AHD LEVEL
PM 27	268232.300	5785207.395	21.525
PM 11	268270.954	5784311.252	17.816



ISSUE	ISSUED FOR	DRAWN	APPROVED	DATE	ISSUE	ISSUED FOR	DRAWN	APPROVED	DATE	DESIGNED: A.SHIELS	DATE: SEPTEMBER 2024	CLIENT: THORNTON ENGINEERING AUSTRALIA P.O. BOX 245 CORIO, VIC, 3214	PROJECT: PAVEMENT AND DRAINAGE WORKS PROPOSED BUILDING EXTENSION THORNTON ENGINEERING AUSTRALIA 370 BACCHUS MARSH ROAD, CORIO, VIC, 3214 CITY OF GREATER GEELONG	CIVIL DRAWING
01	FOR APPROVAL	A.S.	G.R.	01/10/2024						DRAWN: A.SHIELS	SCALE: REFER SHEET			DRAWING TITLE: OVERALL LAYOUT PLAN
02	FOR APPROVAL	A.S.	G.R.	06/12/2024						CHECKED: I.REGUSCI	SHEET SIZE: A1			Stantec Ref. No: 3044.00900-201
03	FOR APPROVAL	G.R.	G.R.	24/11/2025						APPROVED: G.ROACHE	SURVEY: STANTEC GEELONG			SHEET: 2 OF 18
										PE VIC No: PE0009117	POS No: N/A			REV: 03
										SIGNED: <i>[Signature]</i>	PERMIT No: PP-1342-2022			



PAVEMENT LAYOUT PLAN 1



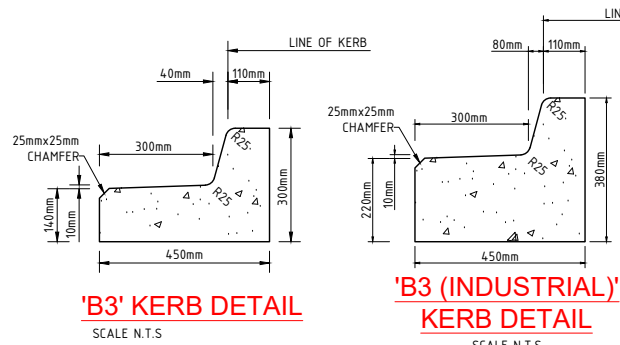
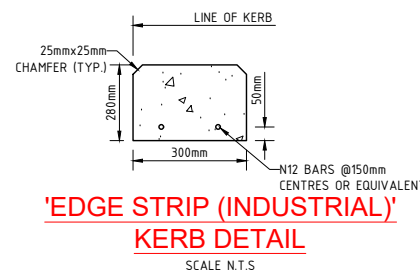
NOTE
THESE DRAWINGS ARE TO BE READ IN CONJUNCTION WITH MORTON DUNN ARCHITECTURAL DRAWINGS 21058 15/03/2023.

NOTE KERB SETOUT 'A' & 'B'
KERB SETOUT 'A' & 'B' REFER TO SHEET 8 & 9 FOR LONGITUDINAL SECTIONS

NOTE PROPOSED SERVICES
PROPOSED SERVICES IN ACCORDANCE WITH HYDRAULIC DRAWINGS.



PROPOSED				EXISTING			
[Symbol]	KERB AND CHANNEL	[Symbol]	TITLE	[Symbol]	EASEMENT	[Symbol]	OVERHEAD ELECTRICAL
[Symbol]	FOOTPATH	[Symbol]	SEWER	[Symbol]	ELECTRICAL	[Symbol]	WATER
[Symbol]	ASPHALT PAVEMENT	[Symbol]	FIRE SERVICE	[Symbol]	STORMWATER DRAINAGE PIPE/PIT	[Symbol]	OPEN DRAIN
[Symbol]	HARDSTAND	[Symbol]	VEGETATION (TO REMAIN)	[Symbol]	FENCE	[Symbol]	BUILDING
[Symbol]	INTERNAL WALK WAY	[Symbol]	BUILDING	[Symbol]		[Symbol]	
[Symbol]	PRODUCTION OFFICE	[Symbol]		[Symbol]		[Symbol]	
[Symbol]	LANDSCAPE	[Symbol]		[Symbol]		[Symbol]	
[Symbol]	STORMWATER DRAINAGE PIPE/PIT	[Symbol]		[Symbol]		[Symbol]	
[Symbol]	TOP OF BATTER	[Symbol]		[Symbol]		[Symbol]	
[Symbol]	TOE OF BATTER	[Symbol]		[Symbol]		[Symbol]	
[Symbol]	BUILDING	[Symbol]		[Symbol]		[Symbol]	
[Symbol]	MAJOR CONTOUR (0.25m)	[Symbol]		[Symbol]		[Symbol]	
[Symbol]	MINOR CONTOUR (0.05m)	[Symbol]		[Symbol]		[Symbol]	



SETOUT C

ID	EASTING	NORTHING	RL
C1	268242.158	5785043.883	21.430
C2	268256.050	5785042.167	21.360
C3	268294.811	5785037.379	21.620
C4	268327.475	5785038.541	21.371
C5	268329.460	5785054.021	21.475
C6	268331.105	5785066.844	21.384
C7	268333.095	5785082.364	21.488
C8	268334.910	5785096.509	21.393
C9	268336.478	5785106.987	21.492
C10	268354.326	5785104.773	21.768
C11	268361.503	5785104.332	21.876
C12	268384.957	5785101.323	21.718
C13	268401.085	5785099.255	21.840
C14	268433.321	5785095.120	21.623
C15	268460.597	5785091.622	21.820
C16	268485.890	5785088.377	21.612
C17	268506.223	5785085.769	21.748
C18	268529.532	5785082.780	21.592
C19	268547.882	5785080.426	21.728
C20	268571.191	5785077.436	21.572
C21	268589.541	5785075.083	21.708
C22	268638.942	5785068.746	21.345
C23	268647.923	5785067.595	21.265
C24	268661.145	5785065.899	21.425

SETOUT D

ID	EASTING	NORTHING	RL
D1	26834.720	5785031.472	21.577
D2	268363.554	5785029.144	21.448
D3	268382.157	5785026.846	21.586
D4	268405.365	5785028.912	21.437
D5	268422.732	5785026.765	21.560
D6	268444.070	5785024.128	21.417
D7	268467.690	5785021.265	21.603
D8	268480.787	5785019.677	21.534
D9	268491.225	5785018.412	21.618
D10	268504.130	5785016.847	21.553
D11	268525.836	5785017.887	21.658
D12	268539.285	5785018.531	21.591
D13	268559.387	5785019.493	21.694
D14	268570.812	5785020.041	21.637
D15	268594.444	5785021.172	21.795
D16	268630.433	5785016.555	21.486
D17	268641.412	5785015.147	21.325
D18	268654.491	5785013.469	21.482

SETOUT F

ID	EASTING	NORTHING	RL
F1	268242.377	5785039.104	21.430
F2	268275.136	5785035.057	21.541
F3	268288.362	5785033.424	21.703
F4	268326.665	5785028.692	21.600
F5	268344.060	5785026.558	21.715
F6	268365.448	5785023.902	21.612
F7	268392.378	5785020.575	21.721
F8	268421.522	5785016.975	21.791
F9	268477.100	5785010.110	21.743
F10	268490.002	5785008.517	21.808
F11	268502.904	5785006.923	21.762
F12	268519.776	5785004.839	21.833
F13	268536.763	5785002.741	21.840
F14	268546.646	5785001.520	21.902
F15	268577.734	5784997.680	21.901
F16	268587.344	5784996.493	21.796
F17	268593.816	5784995.693	21.753

WARNING

BEWARE OF ABOVE GROUND SERVICES

ANY EXCAVATION IN THE VICINITY OF POWER POLES TO BE IN ACCORDANCE WITH THE ELECTRICAL SAFETY (NETWORK ASSETS) REGULATIONS 1999 - RULE 36 (d). NO GO ZONE RULES MAY ALSO APPLY

WARNING

BEWARE OF UNDERGROUND SERVICES

THE LOCATIONS OF UNDERGROUND SERVICES ARE APPROXIMATE ONLY AND THEIR EXACT POSITION SHOULD BE PROVEN ON SITE. NO GUARANTEE IS GIVEN THAT ALL EXISTING SERVICES ARE SHOWN.

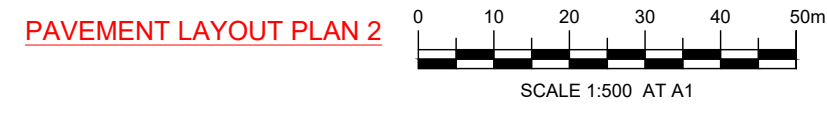
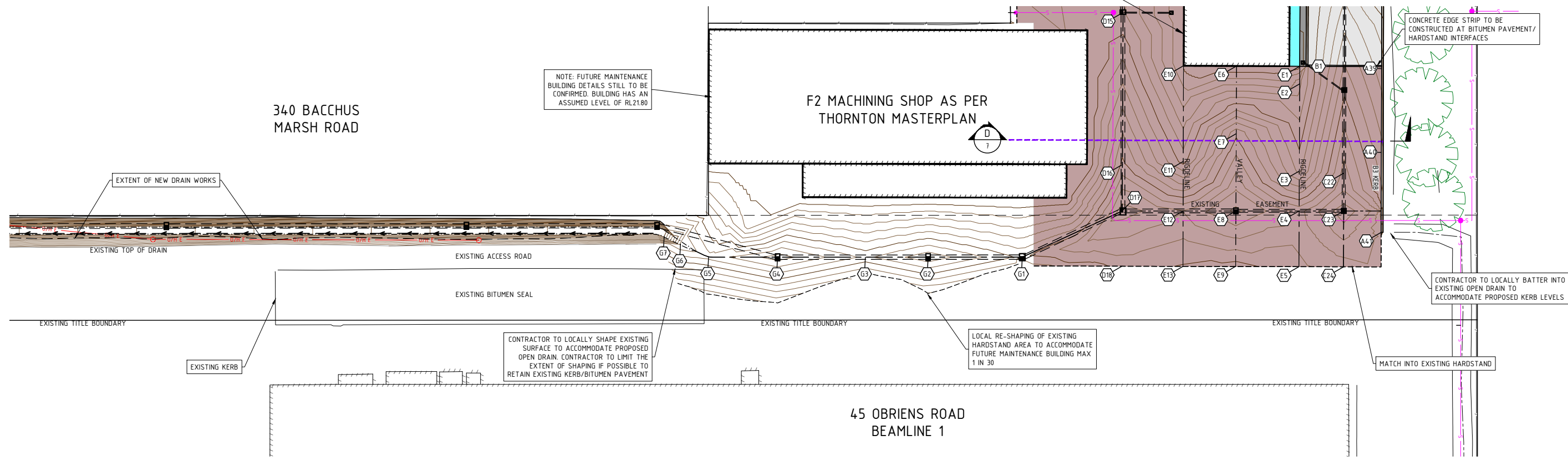
ISSUE	ISSUED FOR	DRAWN	APPROVED	DATE	ISSUE	ISSUED FOR	DRAWN	APPROVED	DATE	DESIGNED	DATE
01	FOR APPROVAL	A.S.	GR	01/10/2024						A.SHIELS	SEPTEMBER 2024
02	FOR APPROVAL	A.S.	GR	06/12/2024						A.SHIELS	SCALE: REFER SHEET
03	FOR APPROVAL	GR	GR	24/11/2025						I.REGUSCI	SHEET SIZE: A1
										G.ROACHE	SURVEY: STANTEC GEELONG
										PE0009117	POS NO: N/A
											VERSION: -
											PERMIT NO: PP-1342-2022
											WORKS SHALL NOT COMMENCE UNTIL PLANS ARE SIGNED AND APPROVED FOR CONSTRUCTION



CLIENT: THORNTON ENGINEERING AUSTRALIA
P.O. BOX 245
CORIO, VIC, 3214

PROJECT: PAVEMENT AND DRAINAGE WORKS
PROPOSED BUILDING EXTENSION
THORNTON ENGINEERING AUSTRALIA
370 BACCHUS MARSH ROAD, CORIO, VIC, 3214
CITY OF GREATER GEELONG

CIVIL DRAWING
DRAWING TITLE: PAVEMENT LAYOUT PLAN (SHEET 1 OF 2)
Stantec REF. No: 304.400900-201
SHEET: 3 OF 18
REV: 03



PROPOSED

	KERB AND CHANNEL
	FOOTPATH
	ASPHALT PAVEMENT
	HARDSTAND
	INTERNAL WALK WAY
	PRODUCTION OFFICE
	STORMWATER DRAINAGE PIPE/PIT
	TOP OF BATTER
	TOE OF BATTER
	BUILDING
	OPEN DRAIN
	MAJOR CONTOUR (0.25m)
	MINOR CONTOUR (0.05m)

EXISTING

	TITLE
	EASEMENT
	OVERHEAD ELECTRICAL
	SEWER
	WATER
	FIRE SERVICE
	STORMWATER DRAINAGE PIPE/PIT
	OPEN DRAIN
	VEGETATION (TO REMAIN)
	FENCE

NOTE
THESE DRAWINGS ARE TO BE READ IN CONJUNCTION WITH MORTON DUNN ARCHITECTURAL DRAWINGS 21058 15/03/2023.

NOTE KERB SETOUT 'A' & 'B'
KERB SETOUT 'A' & 'B' REFER TO SHEET 8 & 9 FOR LONGITUDINAL SECTIONS

SETOUT C

ID	EASTING	NORTHING	RL
C1	268242.158	5785043.883	214.30
C2	268256.050	5785042.167	213.60
C3	268294.811	5785037.379	216.20
C4	268327.475	5785038.541	213.71
C5	268329.460	5785054.021	214.75
C6	268331.105	5785066.844	213.84
C7	268333.095	5785082.364	214.88
C8	268334.910	5785096.509	213.93
C9	268336.478	5785106.987	214.92
C10	268354.326	5785104.773	217.68
C11	268361.503	5785104.332	218.76
C12	268384.957	5785101.323	217.18
C13	268401.085	5785099.255	218.40
C14	268433.321	5785095.120	216.23
C15	268460.597	5785091.622	218.20
C16	268485.890	5785088.377	216.12
C17	268506.223	5785085.769	217.48
C18	268529.532	5785082.780	215.92
C19	268547.882	5785080.426	217.28
C20	268571.191	5785077.436	215.72
C21	268589.541	5785075.083	217.08
C22	268638.942	5785068.746	213.45
C23	268647.923	5785067.595	212.65
C24	268661.145	5785065.899	214.25

SETOUT D

ID	EASTING	NORTHING	RL
D1	268344.720	5785031.472	215.77
D2	268363.554	5785029.144	214.48
D3	268382.157	5785026.846	215.86
D4	268405.365	5785028.912	214.37
D5	268422.732	5785026.765	215.60
D6	268444.070	5785024.128	214.17
D7	268467.690	5785021.265	216.03
D8	268480.787	5785019.677	215.34
D9	268491.225	5785018.412	216.18
D10	268504.130	5785016.847	215.53
D11	268525.836	5785017.887	216.58
D12	268539.285	5785018.531	215.91
D13	268559.387	5785019.493	216.94
D14	268570.812	5785020.041	216.37
D15	268594.444	5785021.172	217.95
D16	268630.433	5785016.555	214.86
D17	268641.412	5785015.147	213.25
D18	268654.491	5785013.469	214.82

SETOUT E

ID	EASTING	NORTHING	RL
E1	268612.370	5785061.427	22.000
E2	268616.518	5785060.896	21.861
E3	268637.150	5785058.249	21.715
E4	268646.600	5785057.037	21.417
E5	268659.794	5785055.345	21.460
E6	268610.441	5785046.461	22.050
E7	268626.458	5785044.406	21.512
E8	268644.750	5785042.059	21.288
E9	268657.900	5785040.372	21.518
E10	268608.831	5785033.913	22.000
E11	268631.483	5785031.047	21.772
E12	268643.207	5785029.564	21.398
E13	268656.330	5785027.904	21.504

SETOUT G

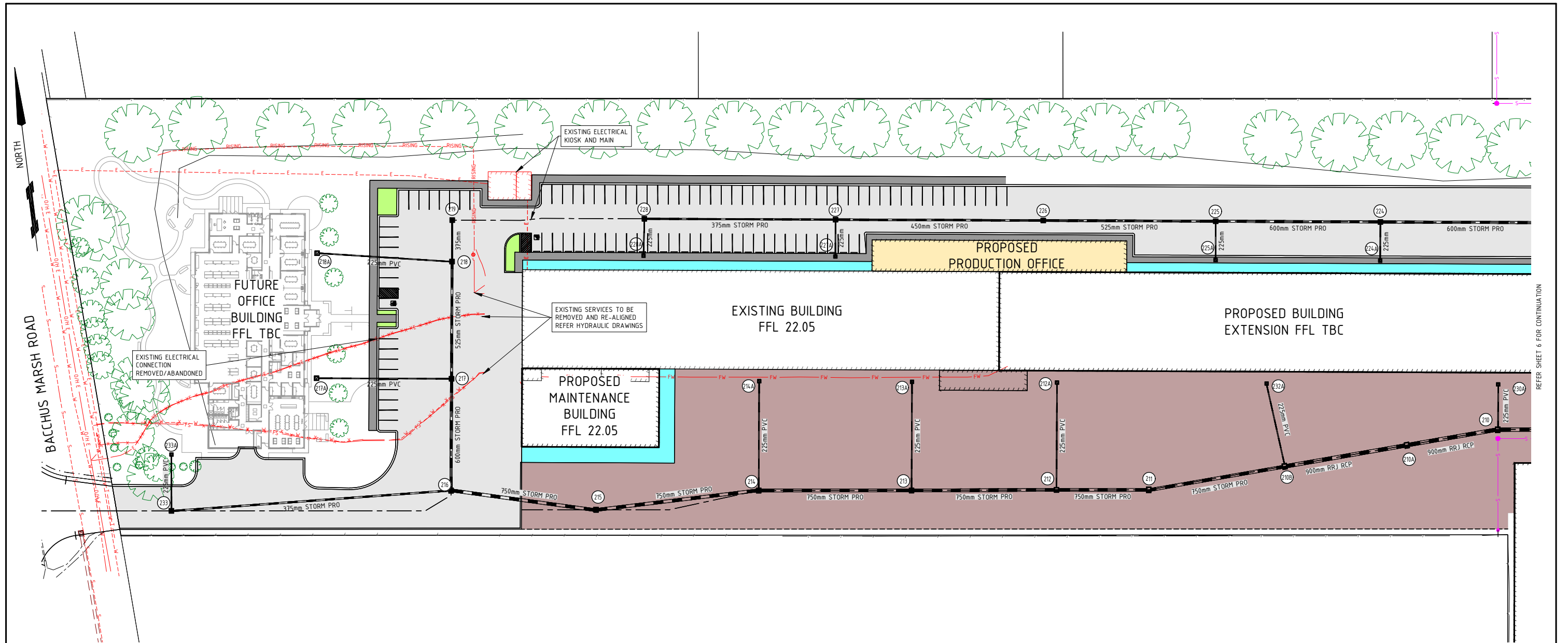
ID	EASTING	NORTHING	RL
G1	268649.420	5784990.135	21.513
G2	268646.666	5784967.835	21.363
G3	268644.830	5784952.978	21.463
G4	268642.261	5784932.176	21.323
G5	268640.123	5784915.864	21.433
G6	268636.284	5784909.588	21.359
G7	268633.972	5784905.946	21.000

WARNING
BEWARE OF ABOVE GROUND SERVICES
ANY EXCAVATION IN THE VICINITY OF POWER POLES TO BE IN ACCORDANCE WITH THE ELECTRICAL SAFETY (NETWORK ASSETS) REGULATIONS 1999 - RULE 36 (d). NO GO ZONE RULES MAY ALSO APPLY

WARNING
BEWARE OF UNDERGROUND SERVICES
THE LOCATIONS OF UNDERGROUND SERVICES ARE APPROXIMATE ONLY AND THEIR EXACT POSITION SHOULD BE PROVEN ON SITE. NO GUARANTEE IS GIVEN THAT ALL EXISTING SERVICES ARE SHOWN.

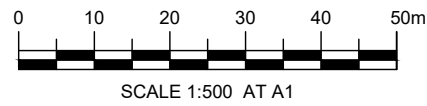


ISSUE	ISSUED FOR	DRAWN	APPROVED	DATE	ISSUE	ISSUED FOR	DRAWN	APPROVED	DATE	DESIGNED	A. SHIELS	DATE	SEPTEMBER 2024	<p>ABN 17 007 820 322 Level 1, Myers Street (PO Box 1137) Geelong, VIC Australia 3220 Phone +61 3 5202 4600 Fax +61 3 5202 4691 Web: www.stantec.com</p>	CLIENT:	THORNTON ENGINEERING AUSTRALIA P.O. BOX 245 CORIO, VIC, 3214	PROJECT:	PAVEMENT AND DRAINAGE WORKS PROPOSED BUILDING EXTENSION THORNTON ENGINEERING AUSTRALIA 370 BACCHUS MARSH ROAD, CORIO, VIC, 3214 CITY OF GREATER GEELONG	CIVIL DRAWING	
01	FOR APPROVAL	A.S.	G.R.	01/10/2024						DRAWN	A. SHIELS	SCALE:	1:500		THIS ELECTRONIC DRAWING IS PRODUCED BY AUTOCAD (R) SYSTEMS AND REMAINS THE PROPERTY OF Stantec. IT MAY NOT BE REPRODUCED IN ANY FORMAT WITHOUT WRITTEN PERMISSION.				DRAWING TITLE:	PAVEMENT LAYOUT PLAN (SHEET 2 OF 2)
02	FOR APPROVAL	A.S.	G.R.	06/12/2024						CHECKED	I. REGUSCI	SHEET SIZE:	A1						Stantec Ref. No:	304400900-201
03	FOR APPROVAL	G.R.	G.R.	24/11/2025						APPROVED:	G. ROACHE	SURVEY:	STANTEC GEELONG							SHEET:



REFER SHEET 6 FOR CONTINUATION

SERVICES LAYOUT PLAN 1



PROPOSED		EXISTING	
	KERB AND CHANNEL		TITLE
	FOOTPATH		EASEMENT
	ASPHALT PAVEMENT		OVERHEAD ELECTRICAL
	HARDSTAND		SEWER
	INTERNAL WALK WAY		WATER
	PRODUCTION OFFICE		FIRE SERVICE
	STORMWATER DRAINAGE PIPE/PIT		FIRE SERVICE (TO REMOVE)
	TOP OF BATTER		SEWER RISING MAIN (TO REMOVE)
	TOE OF BATTER		WATER (TO REMOVE)
	BUILDING		ELECTRICAL (TO REMOVE)

EXISTING	
	ELECTRICAL (TO REMAIN)
	COMMUNICATIONS (TO REMOVE)
	STORMWATER DRAINAGE PIPE/PIT
	OPEN DRAIN
	VEGETATION (TO REMAIN)
	FENCE



NOTE
THESE DRAWINGS ARE TO BE READ IN CONJUNCTION WITH MORTON DUNN ARCHITECTURAL DRAWINGS 21058 15/03/2023.

WARNING
BEWARE OF ABOVE GROUND SERVICES
ANY EXCAVATION IN THE VICINITY OF POWER POLES TO BE IN ACCORDANCE WITH THE ELECTRICAL SAFETY (NETWORK ASSETS) REGULATIONS 1999 - RULE 36 (d). NO GO ZONE RULES MAY ALSO APPLY

WARNING
BEWARE OF UNDERGROUND SERVICES
THE LOCATIONS OF UNDERGROUND SERVICES ARE APPROXIMATE ONLY AND THEIR EXACT POSITION SHOULD BE PROVEN ON SITE. NO GUARANTEE IS GIVEN THAT ALL EXISTING SERVICES ARE SHOWN.

ISSUE	ISSUED FOR	DRAWN	APPROVED	DATE	ISSUE	ISSUED FOR	DRAWN	APPROVED	DATE
01	FOR APPROVAL	A.S.	G.R.	01/10/2024					
02	FOR APPROVAL	A.S.	G.R.	06/12/2024					
03	FOR APPROVAL	G.R.	G.R.	24/11/2025					

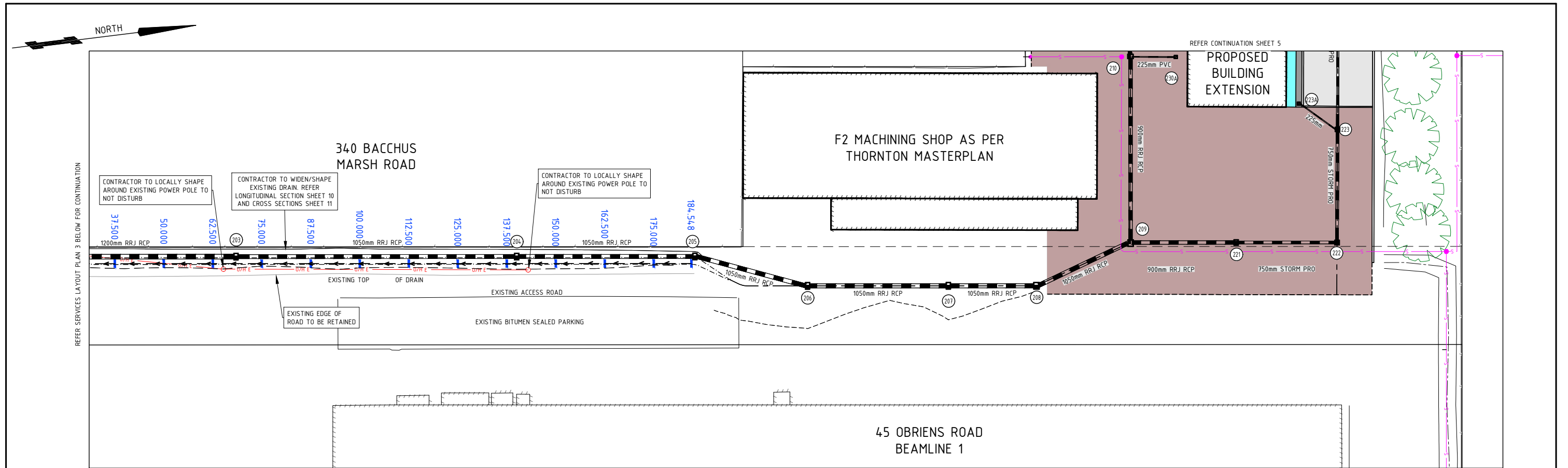
DESIGNED:	A. SHIELS	DATE:	SEPTEMBER 2024
DRAWN:	A. SHIELS	SCALE:	1:500
CHECKED:	I. REGUSCI	SHEET SIZE:	A1
APPROVED:	G. ROACHE	SURVEY:	STANTEC GEELONG
PE VIC No:	PE0009117	POS NO:	N/A
SIGNED:		VERSION:	-
		PERMIT NO:	PP-1342-2022
		WORKS SHALL NOT COMMENCE UNTIL PLANS ARE SIGNED AND APPROVED FOR CONSTRUCTION	

ABN 17 007 820 322
Level 1, Myers Street (PO Box 1137) Geelong, VIC Australia 3220
Phone +61 3 5202 4600 Fax +61 3 5202 4691
Web: www.stantec.com

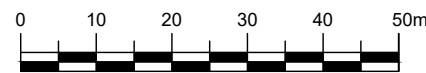
CLIENT:
THORNTON ENGINEERING AUSTRALIA
P.O. BOX 245
CORIO, VIC, 3214

PROJECT:
PAVEMENT AND DRAINAGE WORKS
PROPOSED BUILDING EXTENSION
THORNTON ENGINEERING AUSTRALIA
370 BACCHUS MARSH ROAD, CORIO, VIC, 3214
CITY OF GREATER GEELONG

CIVIL DRAWING	
DRAWING TITLE: SERVICES LAYOUT PLAN (SHEET 1 OF 2)	
Stantec REF. No: 304400900-201	SHEET: 5 OF 18 REV: 03

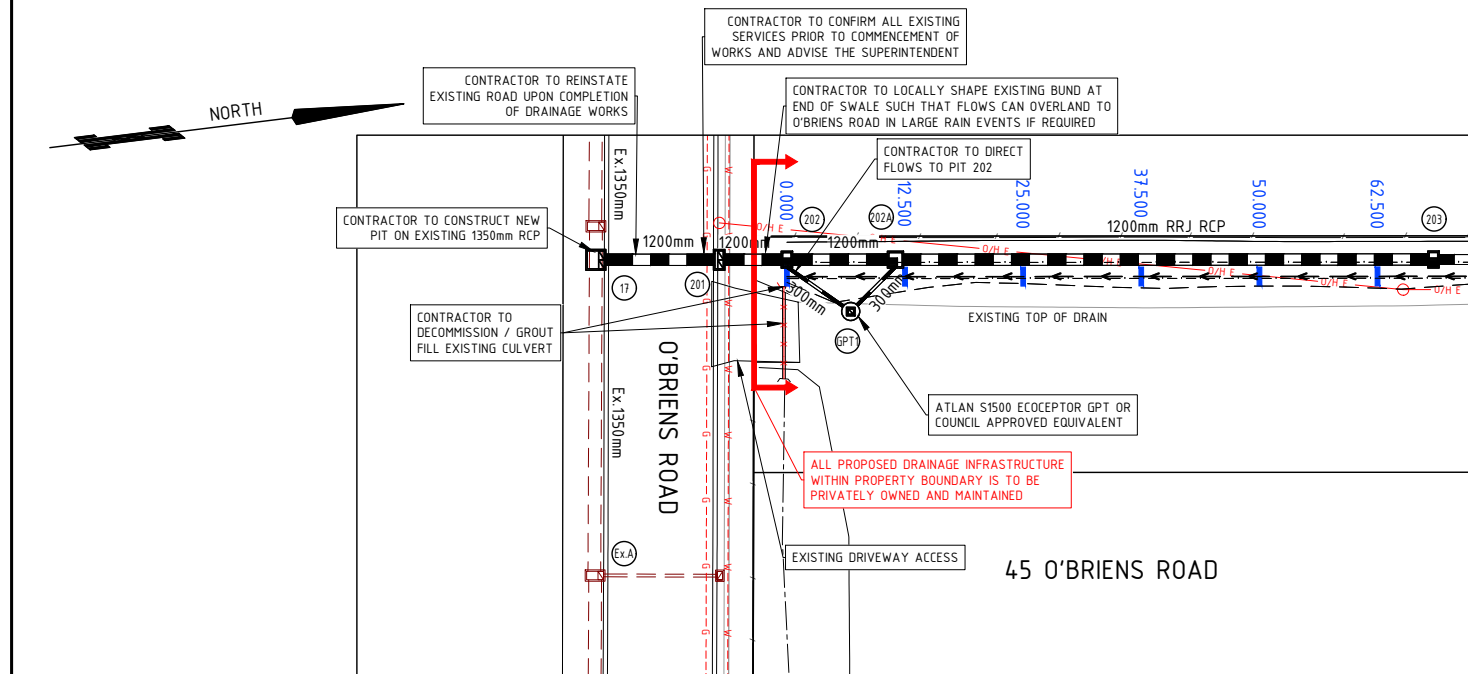


SERVICES LAYOUT PLAN 2

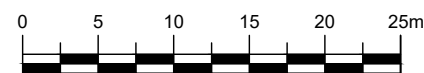


SCALE 1:500 AT A1

CONTRACTOR TO CONFIRM ALL EXISTING SERVICES PRIOR TO COMMENCEMENT OF WORKS AND ADVISE THE SUPERINTENDENT



SERVICES LAYOUT PLAN 3



SCALE 1:250 AT A1

PROPOSED		EXISTING	
	KERB AND CHANNEL		TITLE
	FOOTPATH		EASEMENT
	ASPHALT PAVEMENT		OVERHEAD ELECTRICAL
	HARDSTAND		SEWER
	INTERNAL WALK WAY		WATER
	PRODUCTION OFFICE		GAS
	STORMWATER DRAINAGE PIPE/PIT		STORMWATER DRAINAGE PIPE/PIT
	TOP OF BATTER		OPEN DRAIN
	TOE OF BATTER		VEGETATION (TO REMAIN)
	BUILDING		FENCE
	OPEN DRAIN		
	OPEN DRAIN CHAINAGE MARKER		

NOTE
THESE DRAWINGS ARE TO BE READ IN CONJUNCTION WITH MORTON DUNN ARCHITECTURAL DRAWINGS 21058 15/03/2023.

WARNING
BEWARE OF ABOVE GROUND SERVICES

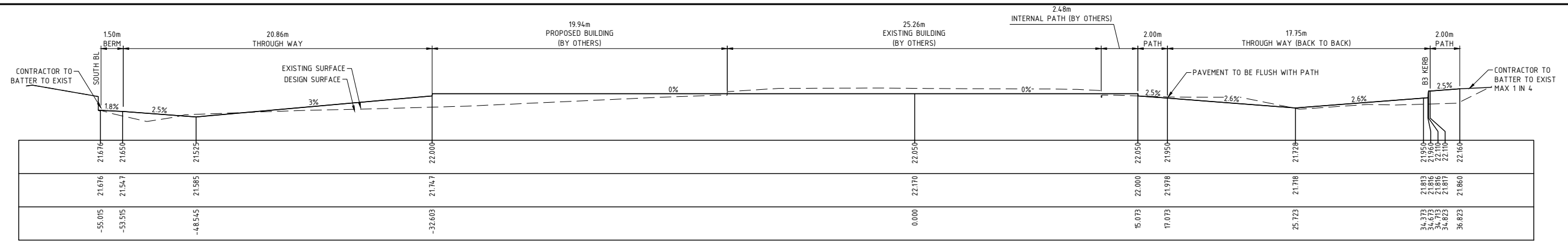
ANY EXCAVATION IN THE VICINITY OF POWER POLES TO BE IN ACCORDANCE WITH THE ELECTRICAL SAFETY (NETWORK ASSETS) REGULATIONS 1999 - RULE 36 (d). NO GO ZONE RULES MAY ALSO APPLY

WARNING
BEWARE OF UNDERGROUND SERVICES

THE LOCATIONS OF UNDERGROUND SERVICES ARE APPROXIMATE ONLY AND THEIR EXACT POSITION SHOULD BE PROVEN ON SITE. NO GUARANTEE IS GIVEN THAT ALL EXISTING SERVICES ARE SHOWN.

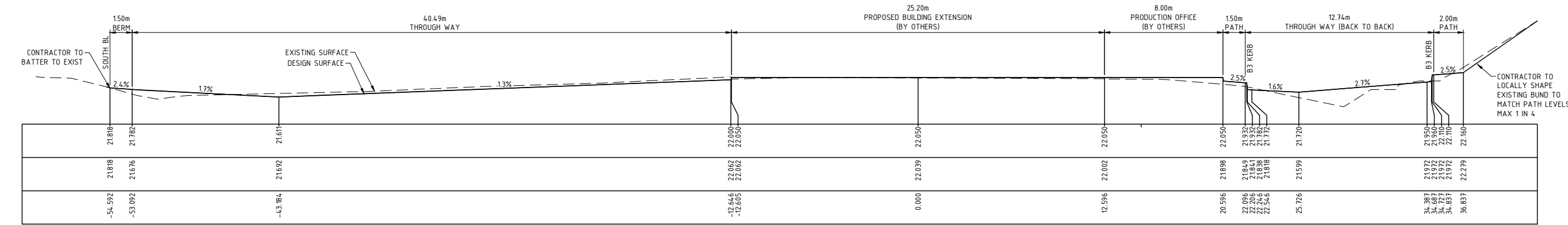


ISSUE	ISSUED FOR	DRAWN	APPROVED	DATE	ISSUE	ISSUED FOR	DRAWN	APPROVED	DATE	DESIGNED	DATE	CLIENT	PROJECT	CIVIL DRAWING
01	FOR APPROVAL	A.S.	G.R.	01/10/2024						A. SHIELDS	SEPTEMBER 2024	THORNTON ENGINEERING AUSTRALIA	PAVEMENT AND DRAINAGE WORKS	
02	FOR APPROVAL	A.S.	G.R.	06/12/2024						A. SHIELDS	REFER SHEET	P.O. BOX 245	PROPOSED BUILDING EXTENSION	DRAWING TITLE:
03	FOR APPROVAL	G.R.	G.R.	24/11/2025						I. REGUSCI	A1	CORIO, VIC, 3214	THORNTON ENGINEERING AUSTRALIA	SERVICES LAYOUT PLAN
										G. ROACHE			370 BACCHUS MARSH ROAD, CORIO, VIC, 3214	(SHEET 2 OF 2)
										PE VIC No: PE0009117			CITY OF GREATER GEELONG	Stantec REF. No: 304400900-201
										SIGNED:	PERMIT NO: PP-1342-2022			SHEET: 6 OF 18
										WORKS SHALL NOT COMMENCE UNTIL PLANS ARE SIGNED AND APPROVED FOR CONSTRUCTION				REV: 03



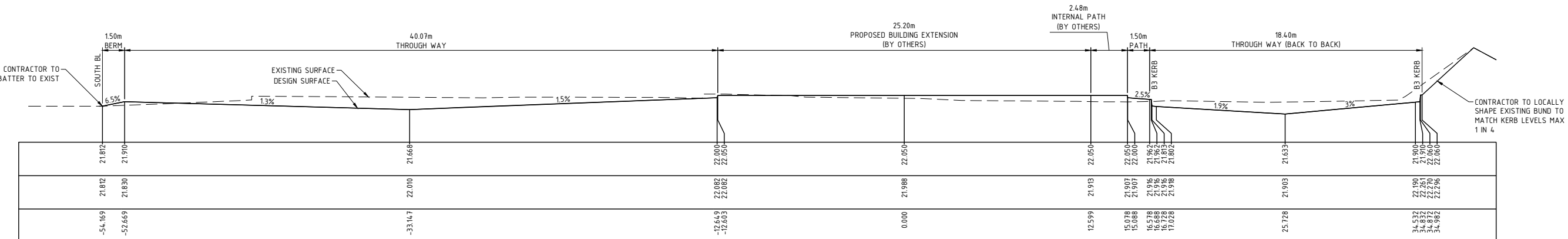
TYPICAL CROSS SECTION - A

HORZ 1:150
VERT 1:50



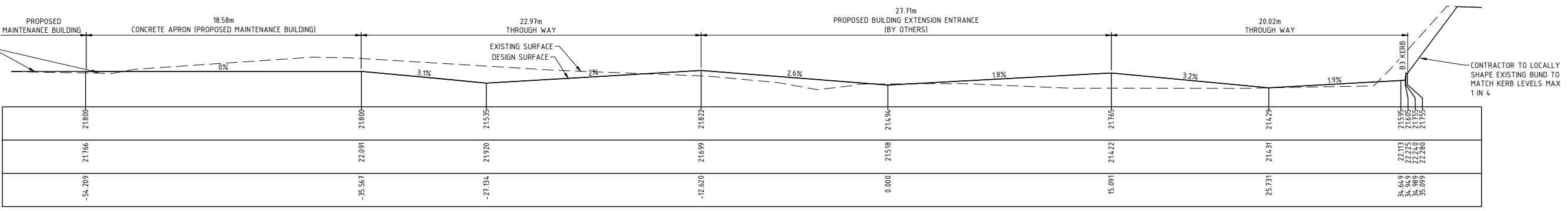
TYPICAL CROSS SECTION - B

HORZ 1:150
VERT 1:50



TYPICAL CROSS SECTION - C

HORZ 1:150
VERT 1:50



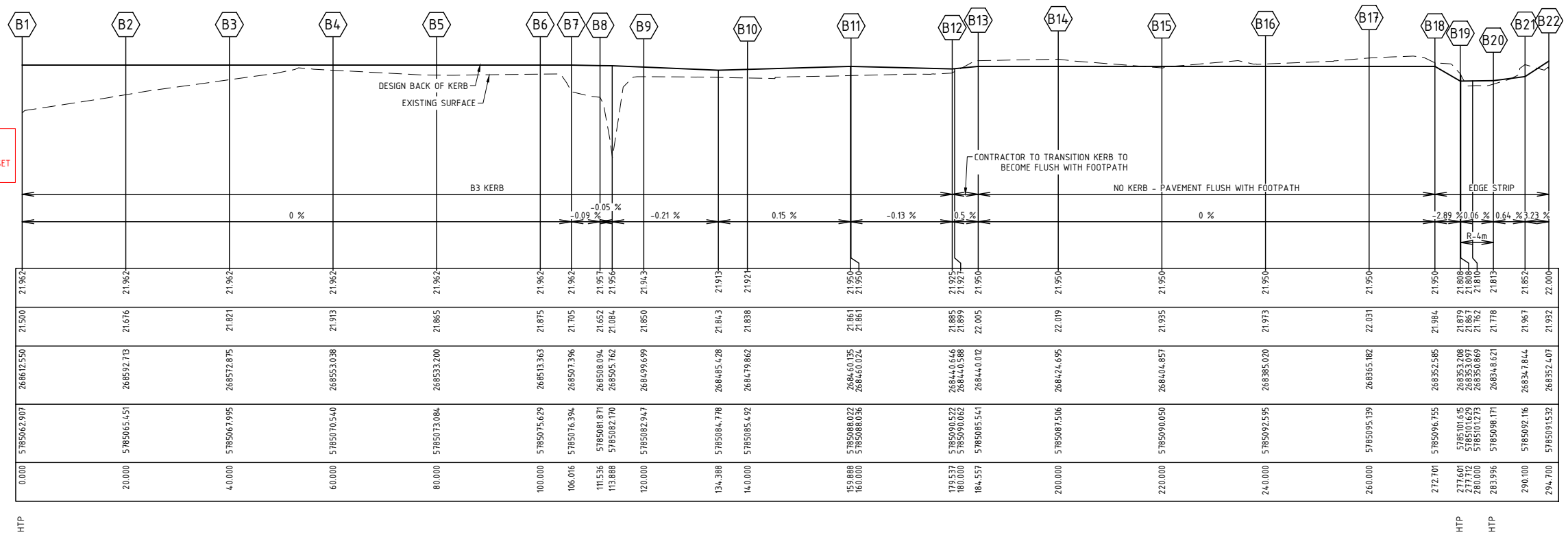
TYPICAL CROSS SECTION - D

HORZ 1:150
VERT 1:50

ISSUE	ISSUED FOR	DRAWN	APPROVED	DATE	ISSUE	ISSUED FOR	DRAWN	APPROVED	DATE	DESIGNED	DATE	SCALE	CLIENT	PROJECT	CIVIL DRAWING
01	FOR APPROVAL	A.S.	G.R.	01/10/2024						A.SHIELS	SEPTEMBER 2024	H 1:150 V 1:50	THORNTON ENGINEERING AUSTRALIA	PAVEMENT AND DRAINAGE WORKS	
02	FOR APPROVAL	A.S.	G.R.	06/12/2024						A.SHIELS		A1	P.O. BOX 245	PROPOSED BUILDING EXTENSION	DRAWING TITLE:
03	FOR APPROVAL	G.R.	G.R.	24/11/2025						I REGUSCI			CORIO, VIC, 3214	THORNTON ENGINEERING AUSTRALIA	TYPICAL CROSS SECTIONS
										G. ROACHE				370 BACCHUS MARSH ROAD, CORIO, VIC, 3214	Stantec Ref. No:
										PE0009117				CITY OF GREATER GEELONG	304400900-201
										SIGNED: <i>G. Roache</i>	PERMIT NO: PP-1342-2022				SHEET: 7 OF 18
											WORKS SHALL NOT COMMENCE UNTIL PLANS ARE SIGNED AND APPROVED FOR CONSTRUCTION				REV: 03

VTP = TANGENT POINT
 HTP = HORIZONTAL TANGENT
 B1 = SETOUT POINT NUMBER

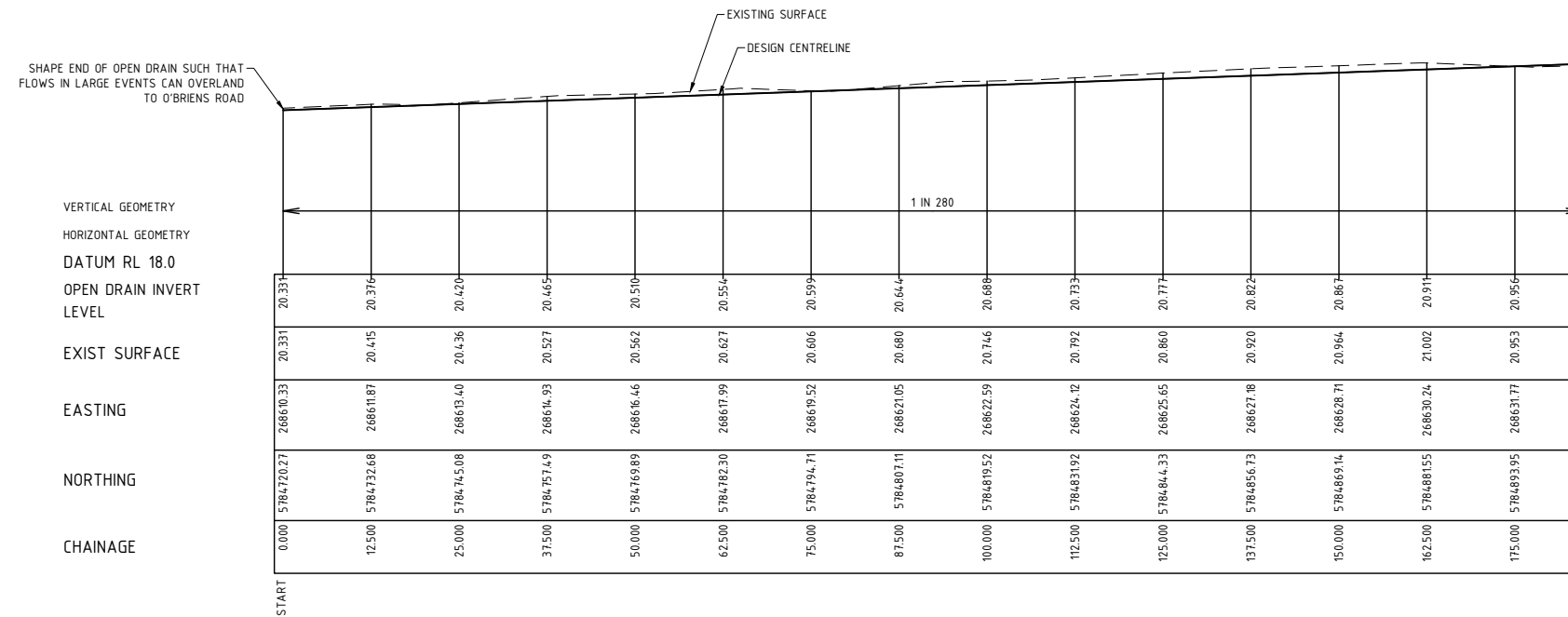
****NOTE****
 KERB 'B' LONGITUDINAL SECTION IS
 SETOUT FROM THE BACK OF KERB TO SET
 PATH LEVEL FROM EXISTING BUILDING



BACK OF KERB LONGITUDINAL SECTION - B

HORZ 1:500
 VERT 1:100

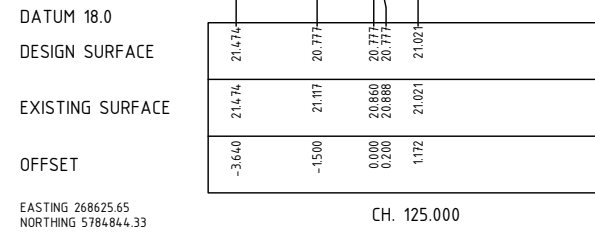
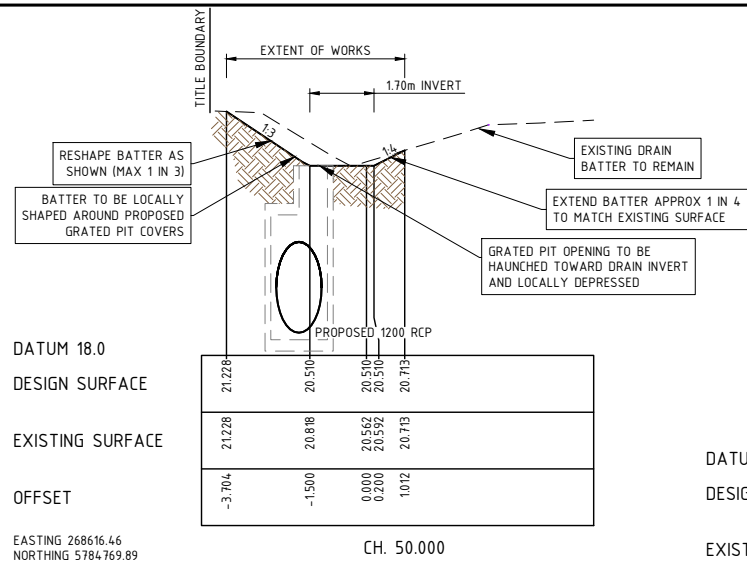
ISSUE	ISSUED FOR	DRAWN	APPROVED	DATE	ISSUE	ISSUED FOR	DRAWN	APPROVED	DATE	DESIGNED: A. SHIELS	DATE: SEPTEMBER 2024	<p>Level 1, Myers Street (PO Box 1137) Geelong, VIC Australia 3220 Phone +61 3 5202 4600 Fax +61 3 5202 4691 Web: www.stantec.com</p>	CLIENT:	THORNTON ENGINEERING AUSTRALIA P.O. BOX 245 CORIO, VIC, 3214	PROJECT:	PAVEMENT AND DRAINAGE WORKS PROPOSED BUILDING EXTENSION THORNTON ENGINEERING AUSTRALIA 370 BACCHUS MARSH ROAD, CORIO, VIC, 3214 CITY OF GREATER GEELONG	CIVIL DRAWING			
01	FOR APPROVAL	A.S.	G.R.	01/10/2024						DRAWN: A. SHIELS	SCALE: H 1:500 V 1:100							DRAWING TITLE:		
02	FOR APPROVAL	A.S.	G.R.	06/12/2024						CHECKED: I. REGUSCI	SHEET SIZE: A1								KERB LONGITUDINAL SECTIONS	
03	FOR APPROVAL	G.R.	G.R.	24/11/2025						APPROVED: G. ROACHE	SURVEY: STANTEC GEELONG								(SHEET 2 OF 2)	
										PE VIC No: PE0009117	VERSION: -								Stamp: REF. No: 304400900-201	
											PERMIT NO: PP-1342-2022								SHEET: 9 OF 18	REV: 03



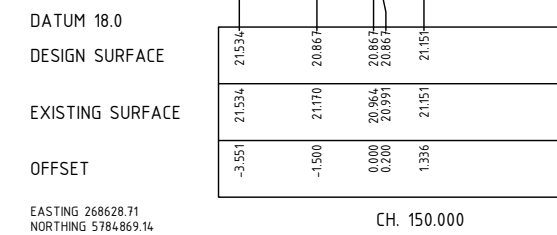
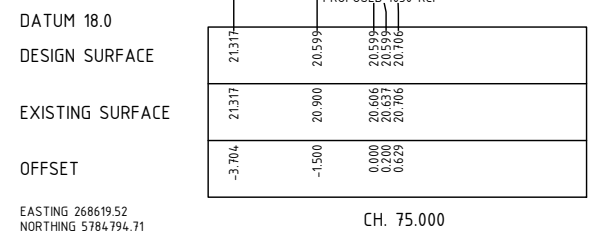
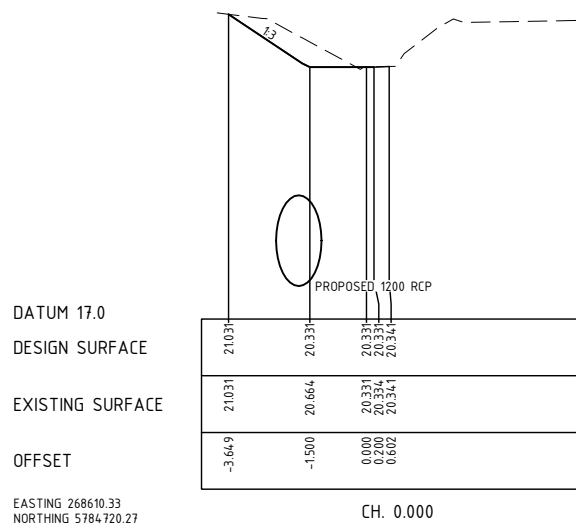
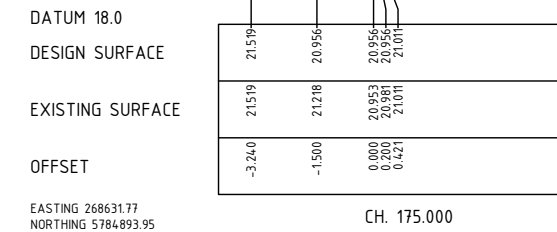
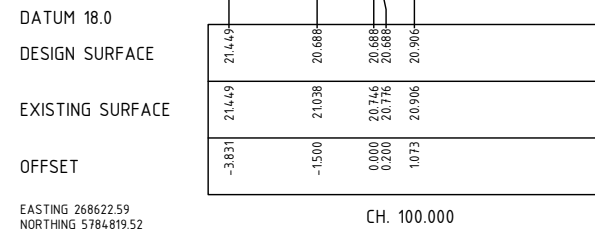
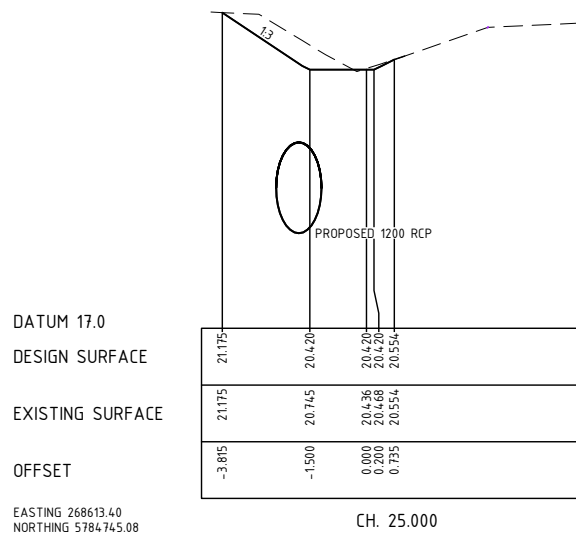
OPEN DRAIN LONGITUDINAL SECTION

HORZ 1:500
VERT 1:50

ISSUE	ISSUED FOR	DRAWN	APPROVED	DATE	ISSUE	ISSUED FOR	DRAWN	APPROVED	DATE	DESIGNED: A. SHIELS	DATE: SEPTEMBER 2024	<p>Level 1, Myers Street (PO Box 1137) Geelong, VIC Australia 3220 Phone +61 3 5202 4600 Fax +61 3 5202 4691 Web: www.stantec.com</p>	CLIENT: THORNTON ENGINEERING AUSTRALIA P.O. BOX 245 CORIO, VIC, 3214	PROJECT: PAVEMENT AND DRAINAGE WORKS PROPOSED BUILDING EXTENSION THORNTON ENGINEERING AUSTRALIA 370 BACCHUS MARSH ROAD, CORIO, VIC, 3214 CITY OF GREATER GEELONG	CIVIL DRAWING	
01	FOR APPROVAL	A.S.	G.R.	01/10/2024						DRAWN: A. SHIELS	SCALE: H 1:500 V 1:50		<p>THIS ELECTRONIC DRAWING IS PRODUCED BY AUTOCAD (R) SYSTEMS AND REMAINS THE PROPERTY OF Stantec. IT MAY NOT BE REPRODUCED IN ANY FORMAT WITHOUT WRITTEN PERMISSION.</p>	DRAWING TITLE: OPEN DRAIN LONGITUDINAL SECTION	Stantec REF. No: 304400900-201	SHEET: 10 OF 18 REV: 03
02	FOR APPROVAL	A.S.	G.R.	06/12/2024					CHECKED: I. REGUSCI	SHEET SIZE: A1						
03	FOR APPROVAL	G.R.	G.R.	24/11/2025					APPROVED: G. ROACHE	SURVEY: STANTEC GEELONG						
									PE VIC No: PE0009117	POS NO: N/A VERSION: -						
									SIGNED: <i>[Signature]</i>	PERMIT NO: PP-1342-2022						

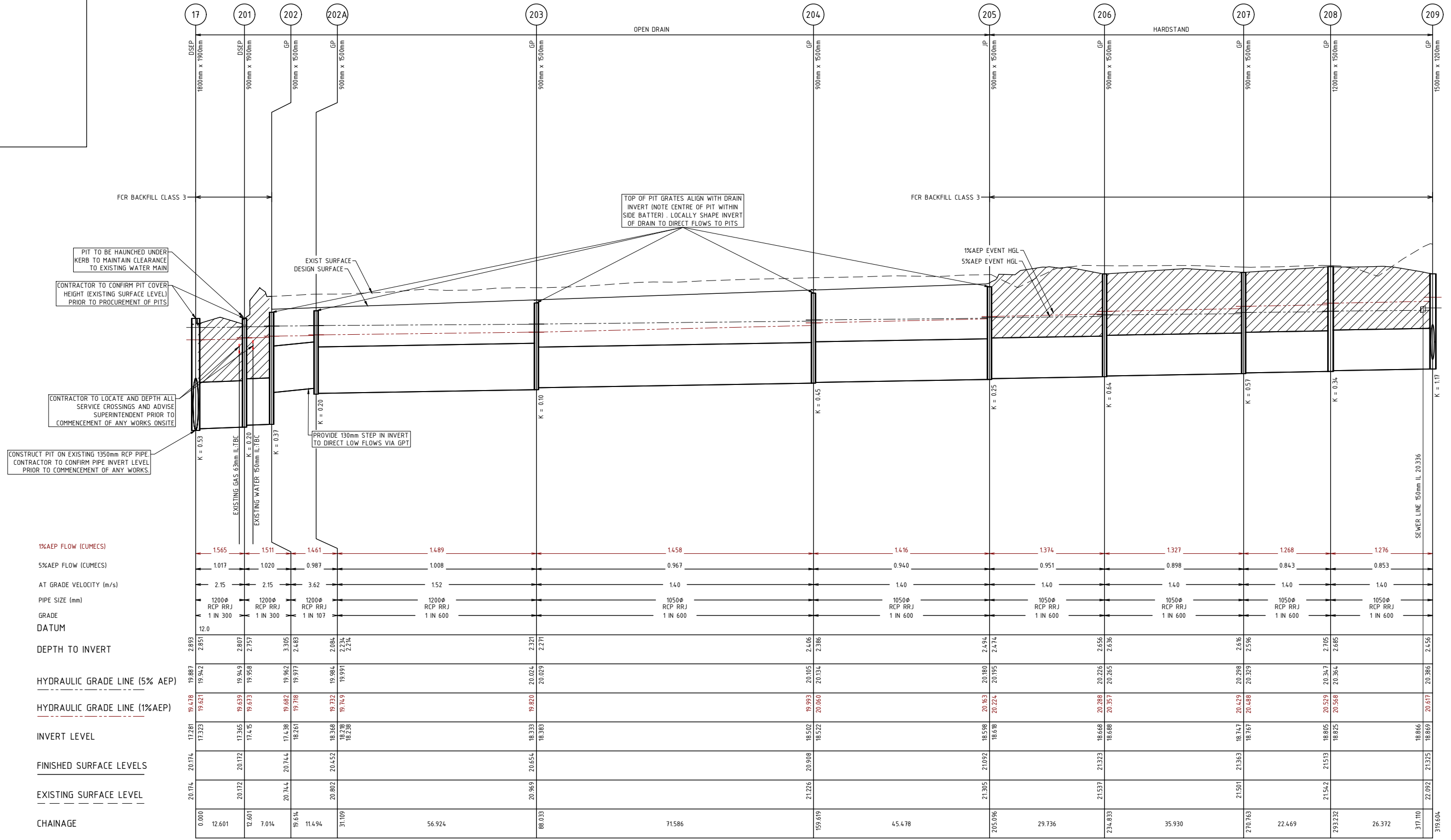


NOTE INVERT SEOUT
EASTING & NORTHING PROVIDED ON CROSS SECTIONS ARE SETOUT FROM THE '0.000' OFFSET POINT



OPEN DRAIN - CROSS SECTIONS
HORZ 1:100
VERT 1:50

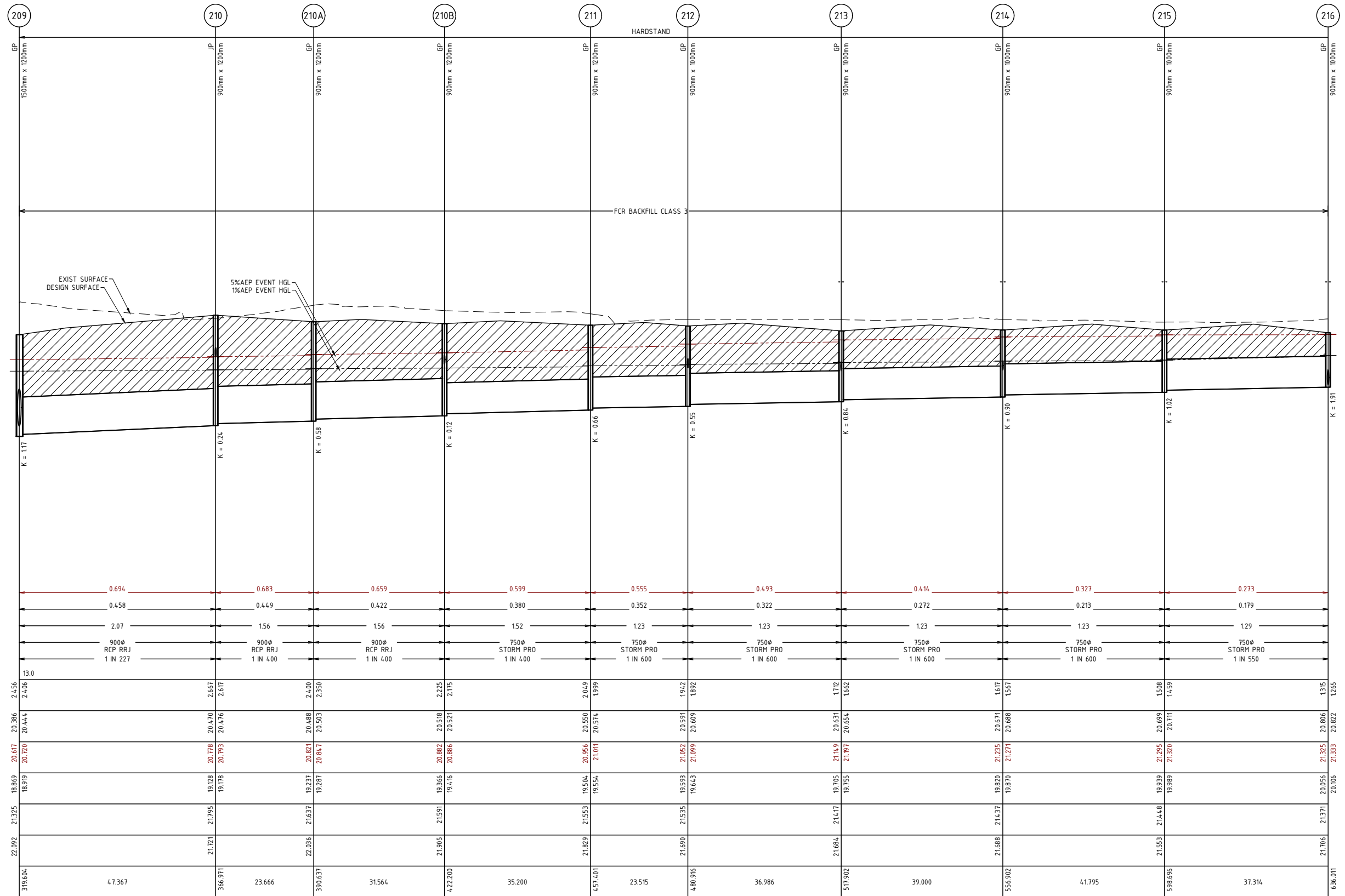
ISSUE	ISSUED FOR	DRAWN	APPROVED	DATE	ISSUE	ISSUED FOR	DRAWN	APPROVED	DATE	DESIGNED: A. SHIELS	DATE: SEPTEMBER 2024	<p>Level 1, Myers Street (PO Box 1137) Geelong, VIC Australia 3220 Phone +61 3 5202 4600 Fax +61 3 5202 4691 Web: www.stantec.com</p>	CLIENT: THORNTON ENGINEERING AUSTRALIA P.O. BOX 245 CORIO, VIC, 3214	PROJECT: PAVEMENT AND DRAINAGE WORKS PROPOSED BUILDING EXTENSION THORNTON ENGINEERING AUSTRALIA 370 BACCHUS MARSH ROAD, CORIO, VIC, 3214 CITY OF GREATER GEELONG	CIVIL DRAWING
01	FOR APPROVAL	A.S.	G.R.	01/10/2024						DRAWN: A. SHIELS	SCALE: H 1:100 V 1:50		DRAWING TITLE: OEPN DRAIN CROSS SECTIONS		
02	FOR APPROVAL	A.S.	G.R.	06/12/2024						CHECKED: I. REGUSCI	SHEET SIZE: A1		Stantec REF. No: 304400900-201		
03	FOR APPROVAL	G.R.	G.R.	24/11/2025						APPROVED: G. ROACHE	SURVEY: STANTEC GEELONG		SHEET: 11 OF 18		
										PE VIC No: PE0009117	VERSION: -		REV: 03		
										SIGNED: <i>[Signature]</i>	PERMIT NO: PP-1342-2022				



DRAINAGE LONGITUDINAL SECTIONS

HORZ 1:500
VERT 1:50

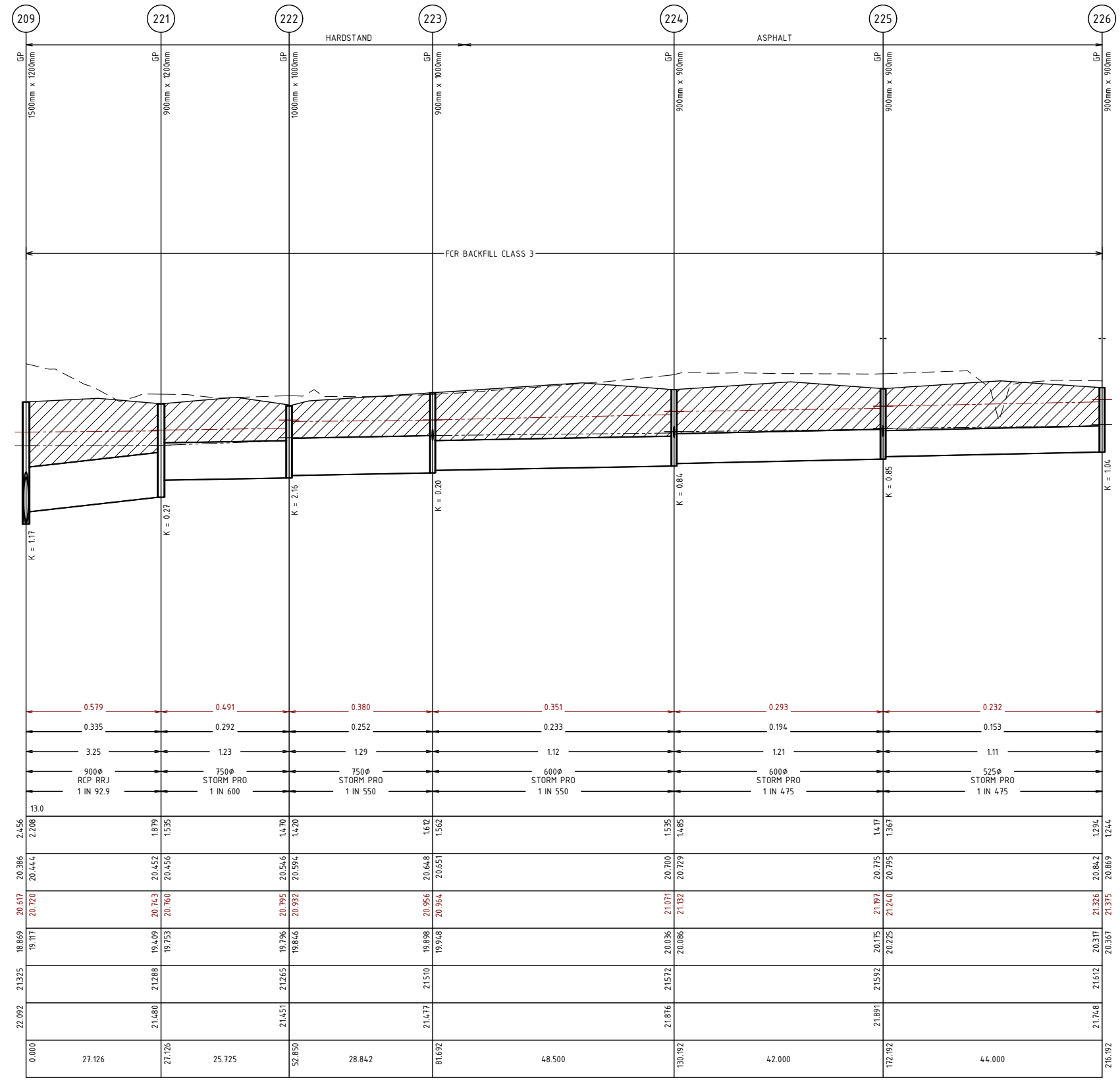
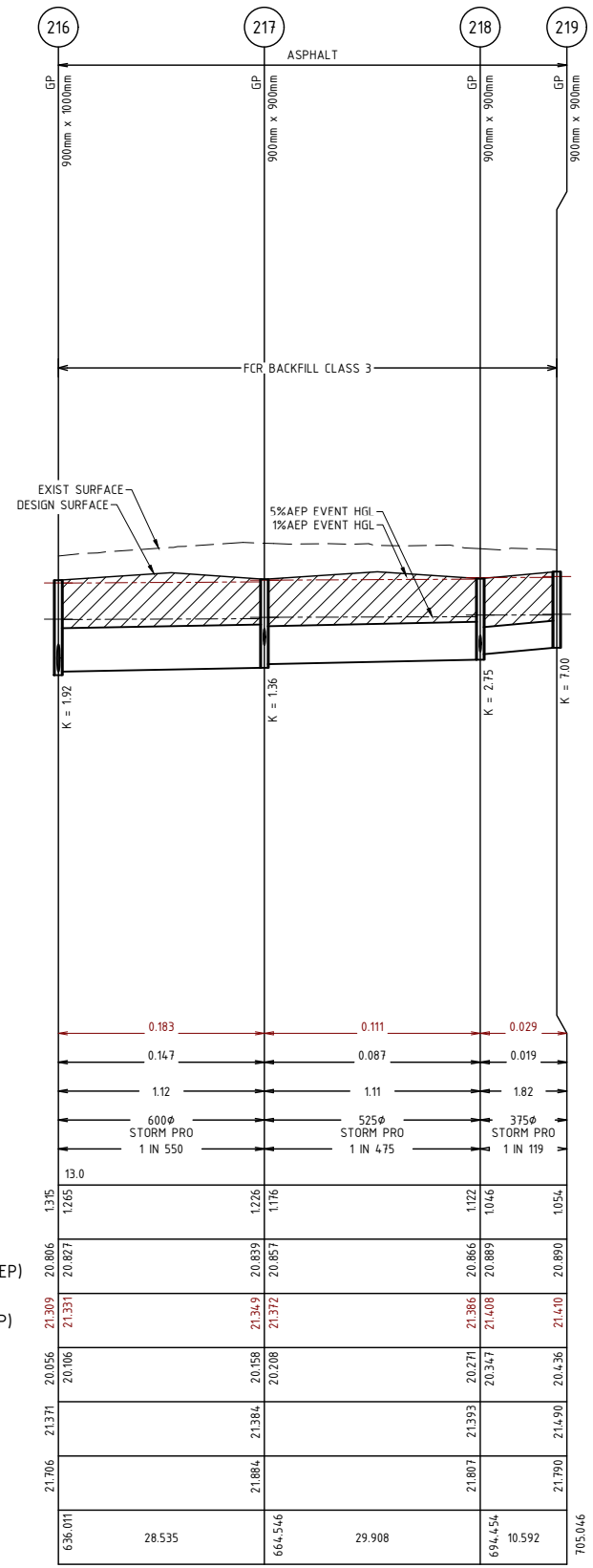
<table border="1"> <tr><th>ISSUE</th><th>ISSUED FOR</th><th>DRAWN</th><th>APPROVED</th><th>DATE</th><th>ISSUE</th></tr> <tr><td>01</td><td>FOR APPROVAL</td><td>A.S.</td><td>G.R.</td><td>01/10/2024</td><td></td></tr> <tr><td>02</td><td>FOR APPROVAL</td><td>A.S.</td><td>G.R.</td><td>06/12/2024</td><td></td></tr> <tr><td>03</td><td>FOR APPROVAL</td><td>G.R.</td><td>G.R.</td><td>24/11/2025</td><td></td></tr> </table>	ISSUE	ISSUED FOR	DRAWN	APPROVED	DATE	ISSUE	01	FOR APPROVAL	A.S.	G.R.	01/10/2024		02	FOR APPROVAL	A.S.	G.R.	06/12/2024		03	FOR APPROVAL	G.R.	G.R.	24/11/2025		<table border="1"> <tr><th>ISSUED FOR</th><th>DRAWN</th><th>APPROVED</th><th>DATE</th></tr> <tr><td></td><td></td><td></td><td></td></tr> </table>	ISSUED FOR	DRAWN	APPROVED	DATE					<table border="1"> <tr><th>DESIGNED</th><td>A. SHIELS</td><th>DATE</th><td>SEPTEMBER 2024</td></tr> <tr><th>DRAWN</th><td>A. SHIELS</td><th>SCALE</th><td>H 1:500 V 1:50</td></tr> <tr><th>CHECKED</th><td>I. REGUSCI</td><th>SHEET SIZE</th><td>A1</td></tr> <tr><th>APPROVED</th><td>G. ROACHE</td><th>SURVEY</th><td>STANTEC GEELONG</td></tr> <tr><th>PE VIC No</th><td>PE0009117</td><th>POS NO</th><td>N/A</td></tr> <tr><th>VERSION</th><td>-</td><th>PERMIT NO</th><td>PP-1342-2022</td></tr> <tr><th>SIGNED</th><td><i>[Signature]</i></td><th>WORKS SHALL NOT COMMENCE UNTIL PLANS ARE SIGNED AND APPROVED FOR CONSTRUCTION</th><td></td></tr> </table>	DESIGNED	A. SHIELS	DATE	SEPTEMBER 2024	DRAWN	A. SHIELS	SCALE	H 1:500 V 1:50	CHECKED	I. REGUSCI	SHEET SIZE	A1	APPROVED	G. ROACHE	SURVEY	STANTEC GEELONG	PE VIC No	PE0009117	POS NO	N/A	VERSION	-	PERMIT NO	PP-1342-2022	SIGNED	<i>[Signature]</i>	WORKS SHALL NOT COMMENCE UNTIL PLANS ARE SIGNED AND APPROVED FOR CONSTRUCTION		<p>CLIENT: THORNTON ENGINEERING AUSTRALIA P.O. BOX 245 CORIO, VIC, 3214</p>	<p>PROJECT: PAVEMENT AND DRAINAGE WORKS PROPOSED BUILDING EXTENSION THORNTON ENGINEERING AUSTRALIA 370 BACCHUS MARSH ROAD, CORIO, VIC, 3214 CITY OF GREATER GEELONG</p>	<p>CIVIL DRAWING</p> <p>DRAWING TITLE: DRAINAGE LONGITUDINAL SECTIONS (SHEET 1 OF 5)</p> <p>Stantec REF. No: 304400900-201</p>
ISSUE	ISSUED FOR	DRAWN	APPROVED	DATE	ISSUE																																																												
01	FOR APPROVAL	A.S.	G.R.	01/10/2024																																																													
02	FOR APPROVAL	A.S.	G.R.	06/12/2024																																																													
03	FOR APPROVAL	G.R.	G.R.	24/11/2025																																																													
ISSUED FOR	DRAWN	APPROVED	DATE																																																														
DESIGNED	A. SHIELS	DATE	SEPTEMBER 2024																																																														
DRAWN	A. SHIELS	SCALE	H 1:500 V 1:50																																																														
CHECKED	I. REGUSCI	SHEET SIZE	A1																																																														
APPROVED	G. ROACHE	SURVEY	STANTEC GEELONG																																																														
PE VIC No	PE0009117	POS NO	N/A																																																														
VERSION	-	PERMIT NO	PP-1342-2022																																																														
SIGNED	<i>[Signature]</i>	WORKS SHALL NOT COMMENCE UNTIL PLANS ARE SIGNED AND APPROVED FOR CONSTRUCTION																																																															



DRAINAGE LONGITUDINAL SECTIONS

HORZ 1:500
VERT 1:50

ISSUE	ISSUED FOR	DRAWN	APPROVED	DATE	ISSUE	ISSUED FOR	DRAWN	APPROVED	DATE	DESIGNED: A. SHIELS	DATE: SEPTEMBER 2024	CLIENT: THORNTON ENGINEERING AUSTRALIA	PROJECT: PAVEMENT AND DRAINAGE WORKS	CIVIL DRAWING
01	FOR APPROVAL	A.S.	G.R.	01/10/2024						DRAWN: A. SHIELS	SCALE: H 1:500 V 1:50	P.O. BOX 245	PROPOSED BUILDING EXTENSION	DRAWING TITLE:
02	FOR APPROVAL	A.S.	G.R.	06/12/2024						CHECKED: I. REGUSCI	SHEET SIZE: A1	CORIO, VIC, 3214	THORNTON ENGINEERING AUSTRALIA	DRAINAGE LONGITUDINAL SECTIONS
03	FOR APPROVAL	G.R.	G.R.	24/11/2025						APPROVED: G. ROACHE	SURVEY: STANTEC GEELONG		370 BACCHUS MARSH ROAD, CORIO, VIC, 3214	(SHEET 2 OF 5)
										PE VIC No: PE0009117	POS NO: N/A	CITY OF GREATER GEELONG		Stantec REF. No: 304.400900-201
										SIGNED: <i>[Signature]</i>	PERMIT NO: PP-1342-2022			SHEET: 13 OF 18
										WORKS SHALL NOT COMMENCE UNTIL PLANS ARE SIGNED AND APPROVED FOR CONSTRUCTION				REV: 03



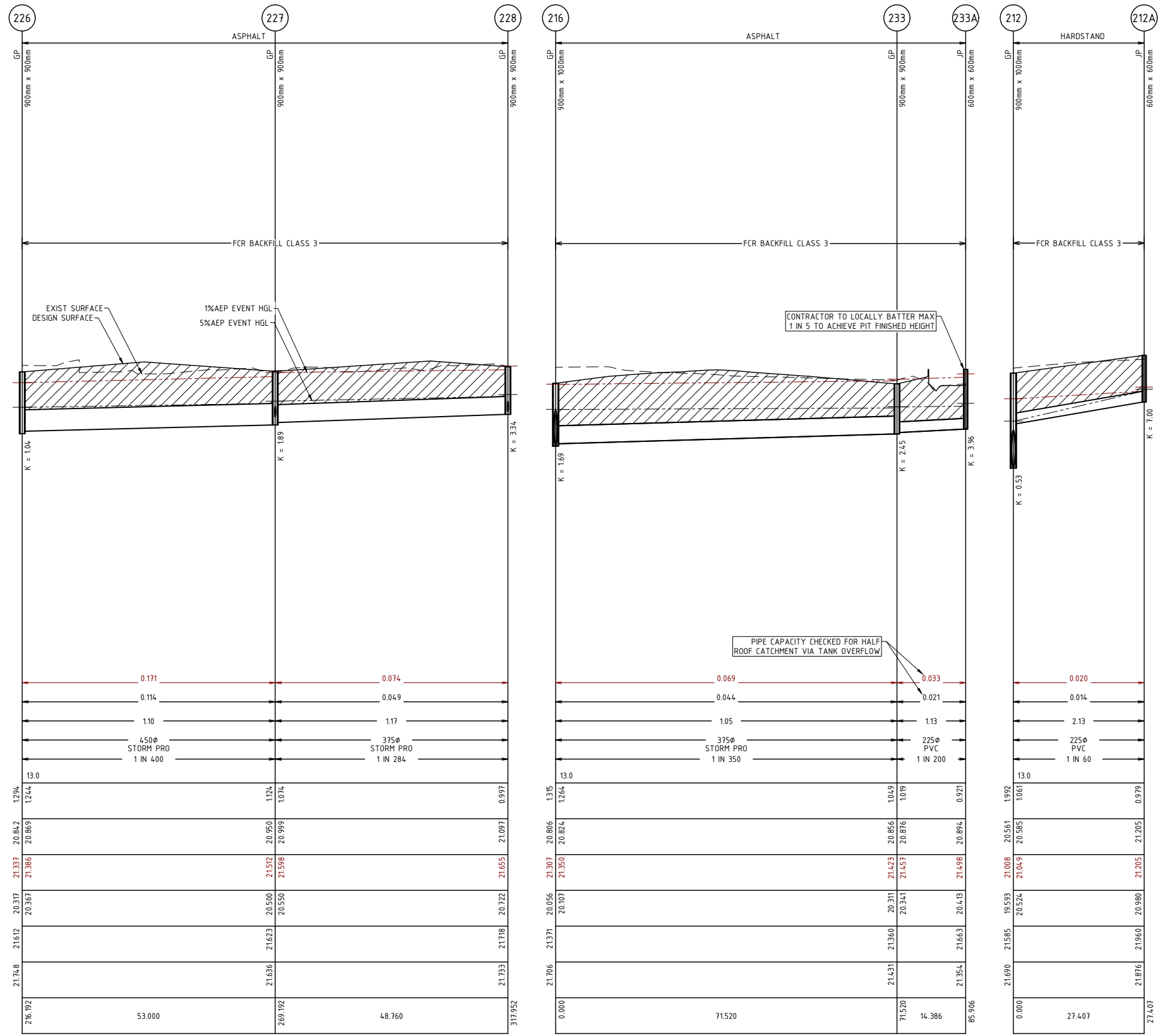
1%AEP FLOW (CUMEC/S)	0.183	0.111	0.029
5%AEP FLOW (CUMEC/S)	0.147	0.087	0.019
AT GRADE VELOCITY (m/s)	1.12	1.11	1.82
PIPE SIZE (mm)	600Ø STORM PRO 1 IN 550	525Ø STORM PRO 1 IN 475	375Ø STORM PRO 1 IN 119
GRADE DATUM	13.0		
DEPTH TO INVERT	13.0	12.6	10.54
HYDRAULIC GRADE LINE (5% AEP)	20.886	20.839	20.890
HYDRAULIC GRADE LINE (1%AEP)	21.309	21.331	21.410
INVERT LEVEL	20.056	20.058	20.436
FINISHED SURFACE LEVELS	21.371	21.384	21.490
EXISTING SURFACE LEVEL	21.706	21.884	21.790
CHAINAGE	636.011	664.546	705.046

1%AEP FLOW (CUMEC/S)	0.579	0.491	0.380	0.351	0.293	0.232
5%AEP FLOW (CUMEC/S)	0.335	0.292	0.252	0.233	0.194	0.153
AT GRADE VELOCITY (m/s)	3.25	1.23	1.29	1.12	1.21	1.11
PIPE SIZE (mm)	900Ø RCP RRJ 1 IN 92.9	750Ø STORM PRO 1 IN 600	750Ø STORM PRO 1 IN 550	600Ø STORM PRO 1 IN 550	600Ø STORM PRO 1 IN 475	525Ø STORM PRO 1 IN 475
GRADE DATUM	13.0					
DEPTH TO INVERT	2.456	2.208	1.879	1.612	1.535	1.294
HYDRAULIC GRADE LINE (5% AEP)	20.617	20.444	20.452	20.648	20.700	20.842
HYDRAULIC GRADE LINE (1%AEP)	20.720	20.743	20.456	20.651	20.729	20.869
INVERT LEVEL	18.869	19.409	20.795	20.956	21.071	21.326
FINISHED SURFACE LEVELS	21.325	21.288	21.265	21.510	21.572	21.612
EXISTING SURFACE LEVEL	22.092	21.480	21.451	21.477	21.876	21.748
CHAINAGE	0.000	27.126	25.725	81.692	48.500	44.000

DRAINAGE LONGITUDINAL SECTIONS

HORZ 1:500
VERT 1:50

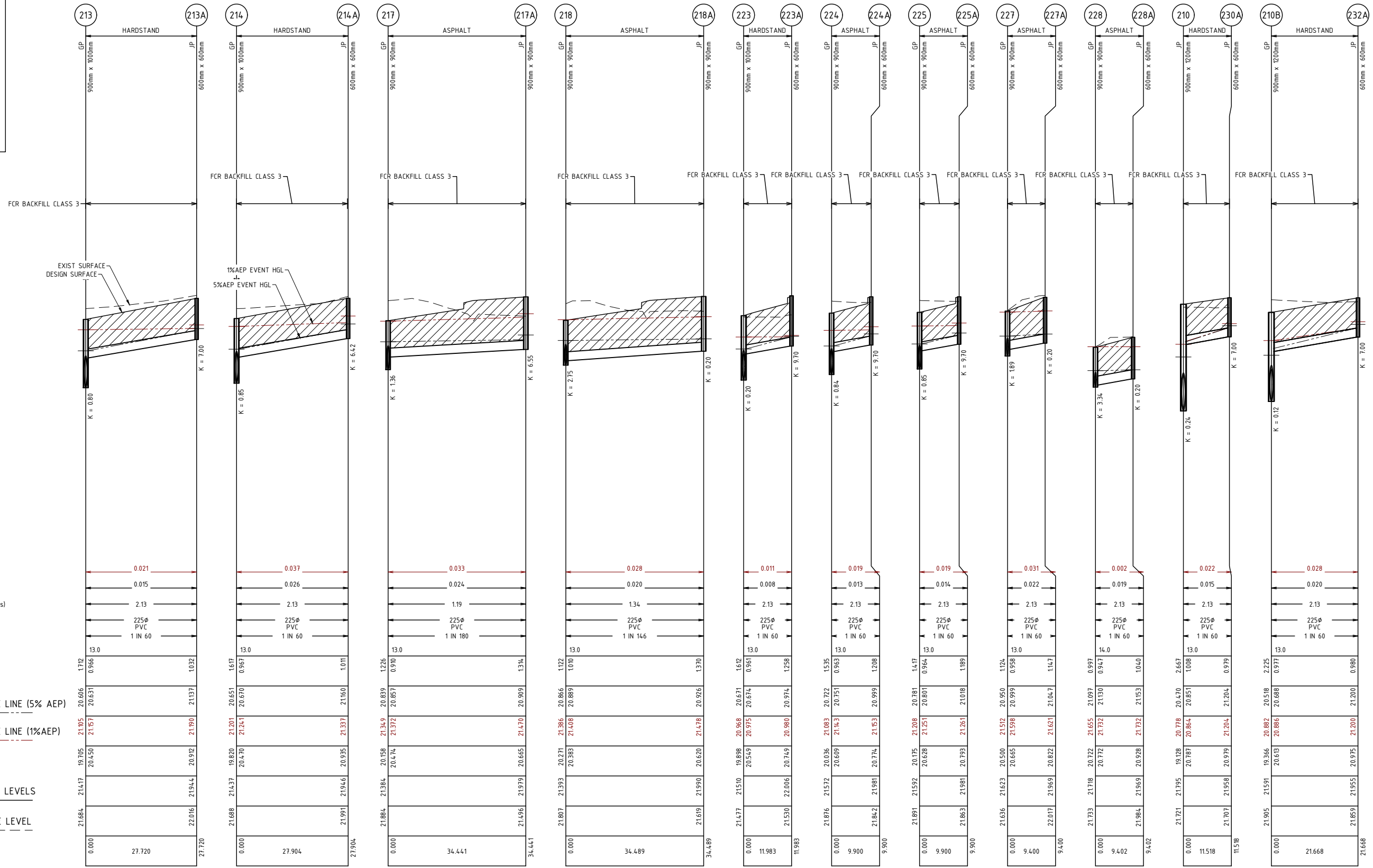
ISSUE	ISSUED FOR	DRAWN	APPROVED	DATE	ISSUED FOR	DRAWN	APPROVED	DATE	DESIGNED: A.SHIELS	DATE: SEPTEMBER 2024	CLIENT: THORNTON ENGINEERING AUSTRALIA	PROJECT: PAVEMENT AND DRAINAGE WORKS	CIVIL DRAWING
01	FOR APPROVAL	A.S.	G.R.	01/10/2024					DRAWN: A.SHIELS	SCALE: H 1:500 V 1:50	P.O. BOX 245	PROPOSED BUILDING EXTENSION	DRAWING TITLE:
02	FOR APPROVAL	A.S.	G.R.	06/12/2024					CHECKED: I.REGUSCI	SHEET SIZE: A1	CORIO, VIC, 3214	THORNTON ENGINEERING AUSTRALIA	DRAINAGE LONGITUDINAL SECTIONS
03	FOR APPROVAL	G.R.	G.R.	24/11/2025					APPROVED: G.ROACHE	SURVEY: STANTEC GEELONG		370 BACCHUS MARSH ROAD, CORIO, VIC, 3214	(SHEET 3 OF 5)
									PE VIC No: PE0009117	POS NO: N/A		CITY OF GREATER GEELONG	Stantec REF. No: 304400900-201
									SIGNED: <i>[Signature]</i>	PERMIT NO: PP-1342-2022			SHEET 14 OF 18
										WORKS SHALL NOT COMMENCE UNTIL PLANS ARE SIGNED AND APPROVED FOR CONSTRUCTION			REV 03



DRAINAGE LONGITUDINAL SECTIONS

HORZ 1:500
VERT 1:50

ISSUE	ISSUED FOR	DRAWN	APPROVED	DATE	ISSUE	ISSUED FOR	DRAWN	APPROVED	DATE	DESIGNED: A. SHIELS	DATE: SEPTEMBER 2024	<p>ABN 17 007 820 322 Level 1, Myers Street (PO Box 1137) Geelong, VIC Australia 3220 Phone +61 3 5202 4600 Fax +61 3 5202 4691 Web: www.stantec.com</p>	CLIENT: THORNTON ENGINEERING AUSTRALIA P.O. BOX 245 CORIO, VIC, 3214	PROJECT: PAVEMENT AND DRAINAGE WORKS PROPOSED BUILDING EXTENSION THORNTON ENGINEERING AUSTRALIA 370 BACCHUS MARSH ROAD, CORIO, VIC, 3214 CITY OF GREATER GEELONG	CIVIL DRAWING	
01	FOR APPROVAL	A.S.	G.R.	01/10/2024						DRAWN: A. SHIELS	SCALE: H 1:500 V 1:50		<p>THIS ELECTRONIC DRAWING IS PRODUCED BY AUTOCAD (R) SYSTEMS AND REMAINS THE PROPERTY OF Stantec. IT MAY NOT BE REPRODUCED IN ANY FORMAT WITHOUT WRITTEN PERMISSION.</p>	DRAWING TITLE: DRAINAGE LONGITUDINAL SECTIONS (SHEET 4 OF 5)	Stantec Ref. No: 304400900-201	SHEET: 15 OF 18 REV: 03
02	FOR APPROVAL	A.S.	G.R.	06/12/2024					CHECKED: I. REGUSCI	SHEET SIZE: A1						
03	FOR APPROVAL	G.R.	G.R.	24/11/2025					APPROVED: G. ROACHE	SURVEY: STANTEC GEELONG						
									PE VIC No: PE0009117	VERSION: -						
									SIGNED: <i>[Signature]</i>	PERMIT NO: PP-1342-2022						
WORKS SHALL NOT COMMENCE UNTIL PLANS ARE SIGNED AND APPROVED FOR CONSTRUCTION																



DRAINAGE LONGITUDINAL SECTIONS

HORZ 1:500
VERT 1:50

ISSUE	ISSUED FOR	DRAWN	APPROVED	DATE	ISSUE	ISSUED FOR	DRAWN	APPROVED	DATE
01	FOR APPROVAL	A.S.	GR.	01/10/2024					
02	FOR APPROVAL	A.S.	GR.	06/12/2024					
03	FOR APPROVAL	GR.	GR.	24/11/2025					

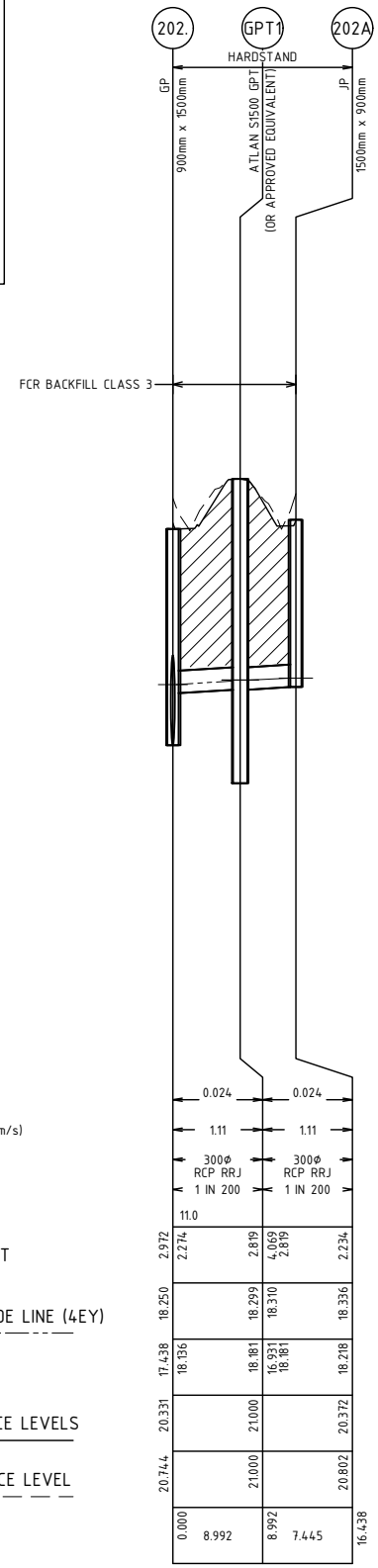
DESIGNED:	A. SHIELS	DATE:	SEPTEMBER 2024
DRAWN:	A. SHIELS	SCALE:	H 1:500 V 1:50
CHECKED:	I. REGUSCI	SHEET SIZE:	A1
APPROVED:	G. ROACHE	SURVEY:	STANTEC GEELONG
PE VIC No:	PE0009117	POS No:	N/A
SIGNED:	<i>[Signature]</i>	PERMIT No:	PP-1342-2022
		WORKS SHALL NOT COMMENCE UNTIL PLANS ARE SIGNED AND APPROVED FOR CONSTRUCTION	

Level 1, Myers Street (PO Box 1137) Geelong, VIC Australia 3220
 Phone +61 3 5202 4600 Fax +61 3 5202 4691
 Web: www.stantec.com

CLIENT:
THORNTON ENGINEERING AUSTRALIA
 P.O. BOX 245
 CORIO, VIC, 3214

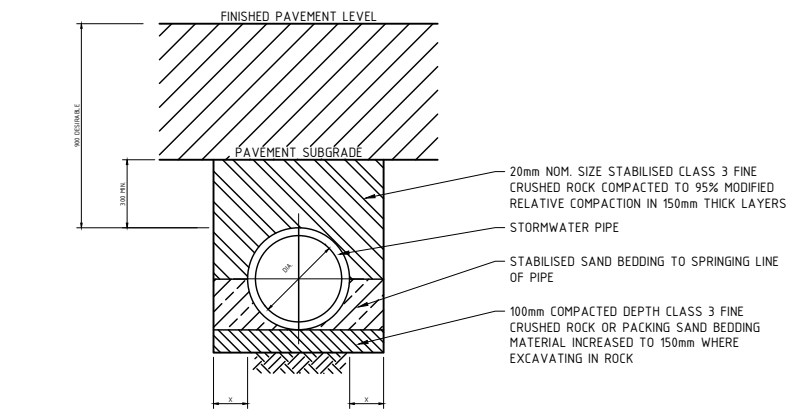
PROJECT:
PAVEMENT AND DRAINAGE WORKS
 PROPOSED BUILDING EXTENSION
 THORNTON ENGINEERING AUSTRALIA
 370 BACCHUS MARSH ROAD, CORIO, VIC, 3214
 CITY OF GREATER GEELONG

CIVIL DRAWING	
DRAWING TITLE: DRAINAGE LONGITUDINAL SECTIONS (SHEET 5 OF 5)	
Stantec Ref. No: 304.400900-201	SHEET: 16 OF 18 REV: 03



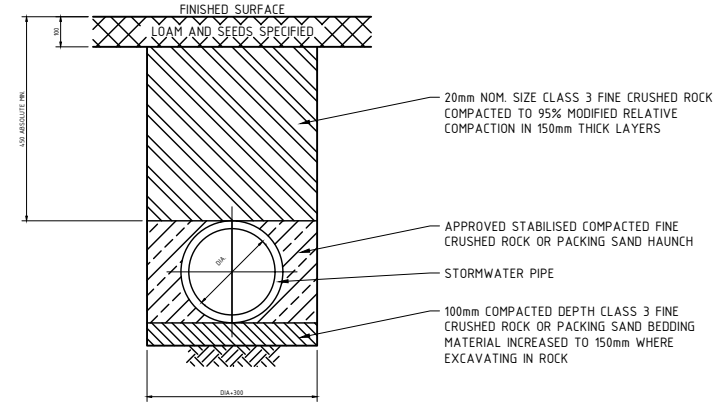
DRAINAGE LONGITUDINAL SECTIONS

HORZ 1:500
VERT 1:50



UNDER ROAD PAVEMENT BACKFILL DETAIL

NTS



BEHIND KERB

NTS

ALL MEASUREMENTS IN MILLIMETRES

NOTES:

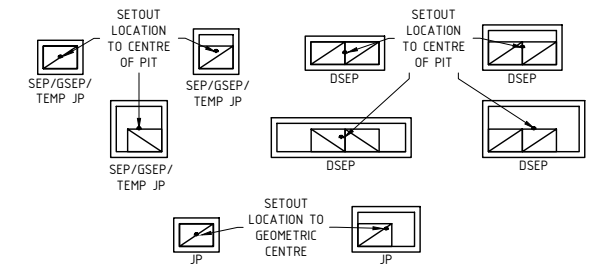
- TRENCHING DETAILS INDICATIVE ONLY AND SHOULD BE INSTALLED TO MANUFACTURERS SPECIFICATIONS OR AS/NZS 3725-2007 FOR REINFORCED CONCRETE PIPES AND AS/NZS 2566.2-2002 FOR RIBBED POLYPROPYLENE PIPES.
- WHERE PIPE IS BEHIND KERB AND CHANNEL, INSTALL ONE METRE (1m) MINIMUM OF APPROVED 90Ø CLASS 400 SLOTTED/PERFORATED SUBSOIL DRAIN WITH GEOTEXTILE SOCK SURROUND INTO PIT IN LIEU OF SUB-SOIL DRAINAGE BEHIND KERB.
- BACKFILL DESIGN TO BE IN ACCORDANCE WITH CEMENT & CONCRETE ASSOCIATION OF AUSTRALIA "PIPE CLASS" REQUIREMENTS. BACKFILL UNDER ROAD PAVEMENT TO BE STABILISED WHERE CCAA INFORMATION IS NOT AVAILABLE.
- APPROVAL MAY BE GIVEN FOR USE OF BACKFILL MATERIAL OTHER THAN CRUSHED ROCK WHERE IT CAN BE DEMONSTRATED THAT A MINIMUM OF 95% MODIFIED RELATIVE COMPACTION CAN BE ACHIEVED.
- CEMENT, CONCRETE OR CEMENT STABILISED CRUSHED ROCK TO BE USED WHERE SETTLEMENT OF TRENCH WILL EFFECT INFRASTRUCTURE.

PIT SCHEDULE (COORDINATE SYSTEM: MGA 55 94)

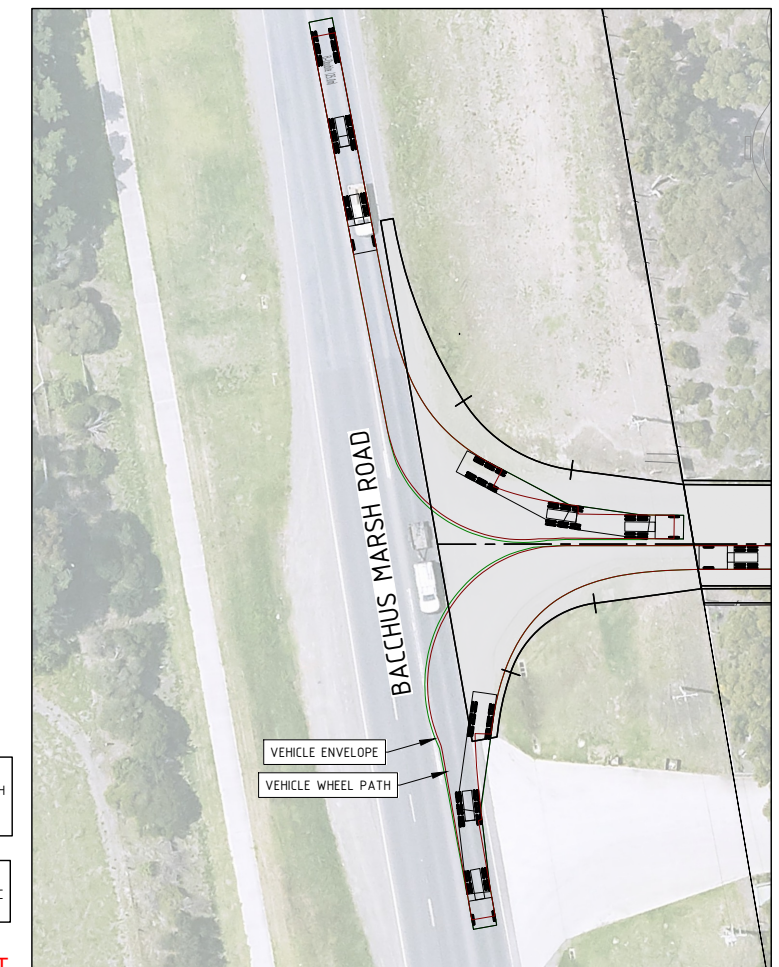
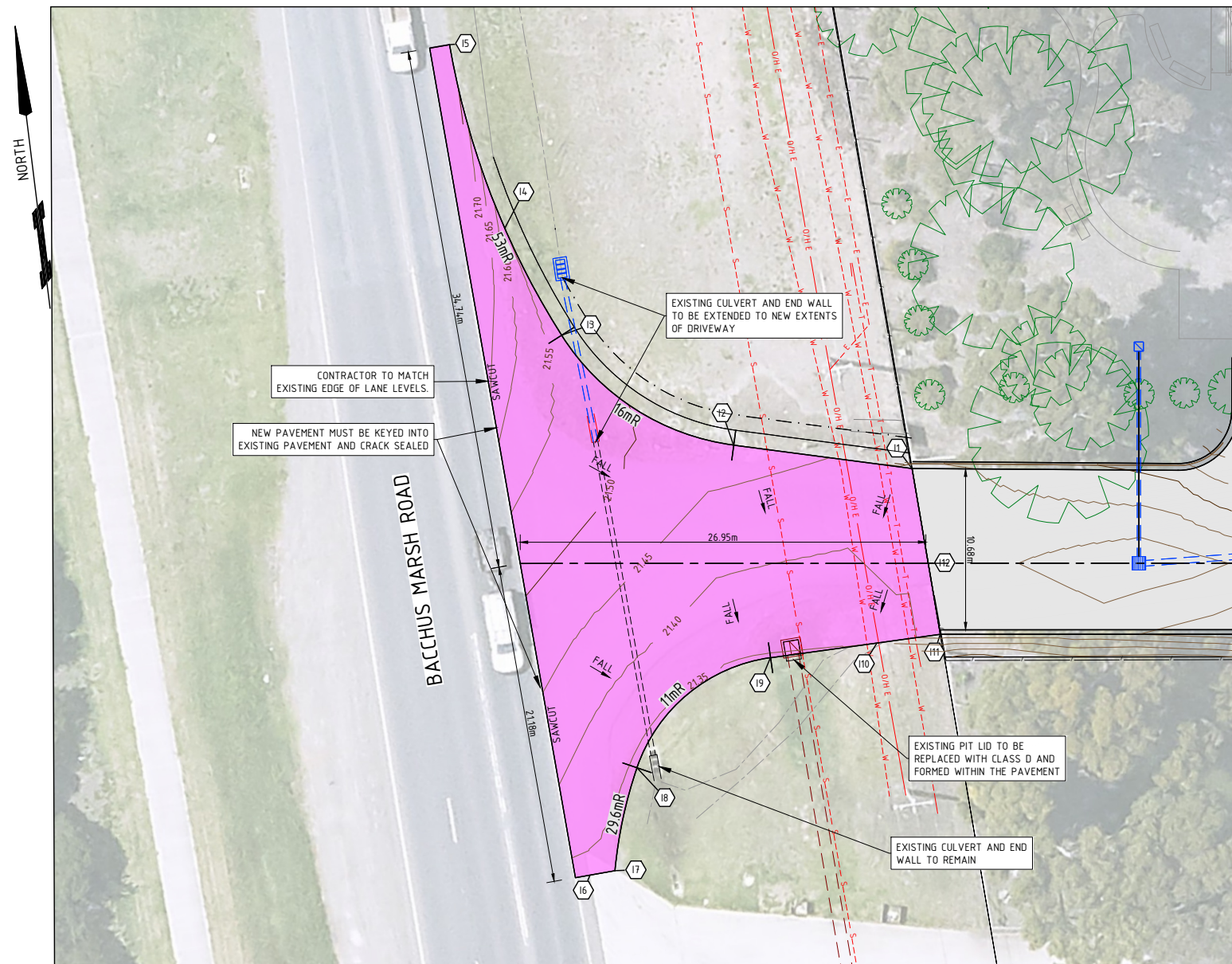
PIT	TYPE	EASTING	NORTHING	INTERNAL WD	INTERNAL LEN	FROM PIT DIA	INLET DIA	INLET INV	OUTLET DIA	OUTLET INV	PIT RL	PIT DEPTH	COVER CLASS	REMARKS
17	DSEPxx	268606.151	5784701.019	1800	1900	18	1350	17.281	1350	17.281	20.174	2.893	CLASS D	Refer IDM SD 445. Construct pit on existing line.
201	DSEPxx	268607.698	5784713.524	900	1900	202	1200	17.415	1200	17.365	20.173	2.808	CLASS D	Refer IDM SD 445
202	GPx	268608.555	5784720.485	900	1500	202A	1200	18.261	1200	17.438	20.331	2.893	CLASS C	Refer IDM SD 455
202A	GPx	268609.965	5784731.893	900	1500	203	1200	18.238	1200	18.368	20.452	2.234	CLASS D	Refer IDM SD 455
203	GPx	268616.943	5784788.388	900	1500	204	1050	18.383	1200	18.333	20.654	2.321	CLASS D	Refer IDM SD 455
204	GPx	268625.719	5784859.434	900	1500	205	1050	18.522	1050	18.502	20.908	2.406	CLASS D	Refer IDM SD 455
205	JPx	268631.294	5784904.568	900	1500	206	1050	18.618	1050	18.598	21.092	2.494	CLASS C	Refer IDM SD 420
206	GPx	268642.261	5784932.176	900	1500	207	1050	18.688	1050	18.668	21.323	2.656	CLASS D	Refer IDM SD 455
207	GPx	268646.666	5784967.835	900	1500	208	1050	18.767	1050	18.747	21.363	2.616	CLASS D	Refer IDM SD 455
208	GPx	268649.42	5784990.135	1200	1500	209	1050	18.825	1050	18.805	21.513	2.708	CLASS D	Refer IDM SD 455
209	GPx	268641.426	5785015.145	1500	1200	210	900	18.919	1050	18.869	21.325	2.456	CLASS D	Refer IDM SD 455
210	JPx	268594.444	5785021.172	900	1200	210A	900	19.178	900	19.128	21.795	2.667	CLASS C	Refer IDM SD 420
210A	GPx	268570.812	5785020.041	900	1200	210B	900	19.287	900	19.237	21.637	2.4	CLASS D	Refer IDM SD 455
210B	GPx	268539.285	5785018.531	900	1200	211	750	19.416	900	19.366	21.591	2.225	CLASS D	Refer IDM SD 455
211	GPx	268504.131	5785016.847	900	1200	212	750	19.554	750	19.504	21.553	2.049	CLASS D	Refer IDM SD 455
212	GPx	268480.794	5785019.73	900	1000	213	750	19.643	750	19.593	21.535	1.942	CLASS D	Refer IDM SD 455
213	GPx	268444.07	5785024.128	900	1000	214	750	19.755	750	19.705	21.417	1.712	CLASS D	Refer IDM SD 455
214	GPx	268405.365	5785028.912	900	1000	215	750	19.87	750	19.82	21.437	1.617	CLASS D	Refer IDM SD 455
215	GPx	268363.577	5785029.141	900	1000	216	750	19.989	750	19.939	21.448	1.508	CLASS D	Refer IDM SD 455
216	GPx	268327.475	5785038.541	900	1000	217	600	20.106	750	20.056	21.371	1.315	CLASS D	Refer IDM SD 455
217	GP	268331.105	5785066.844	900	900	218	525	20.208	600	20.158	21.384	1.226	CLASS D	Refer IDM SD 455
218	GP	268334.91	5785096.509	900	900	217A	225	20.474	525	20.271	21.393	1.122	CLASS D	Refer IDM SD 455
219	GP	268336.257	5785107.015	900	900	218A	225	20.383	375	20.436	21.49	1.054	CLASS D	Refer IDM SD 455
221	GPx	268644.751	5785042.066	900	1200	222	750	19.753	900	19.409	21.288	1.879	CLASS D	Refer IDM SD 455
222	GPx	268647.905	5785067.596	1000	1000	223	750	19.846	750	19.796	21.246	1.47	CLASS D	Refer IDM SD 455
223	GPx	268619.297	5785071.266	900	1000	224	600	19.948	750	19.898	21.51	1.612	CLASS D	Refer IDM SD 455
224	GPx	268571.191	5785077.436	900	900	223A	225	20.549	600	20.036	21.572	1.535	CLASS D	Refer IDM SD 455
225	GPx	268529.532	5785082.78	900	900	224A	225	20.609	600	20.175	21.592	1.417	CLASS D	Refer IDM SD 455
226	GPx	268485.89	5785088.377	900	900	225A	225	20.628	525	20.317	21.612	1.294	CLASS D	Refer IDM SD 455
227	GPx	268433.321	5785095.12	900	900	226	375	20.55	450	20.5	21.623	1.124	CLASS D	Refer IDM SD 455
228	GPx	268384.957	5785101.323	900	900	227A	225	20.665	375	20.722	21.718	0.997	CLASS D	Refer IDM SD 455
230A	JP	268595.91	5785032.596	600	600	228A	225	20.772	225	20.979	21.958	0.979	CLASS C	Refer IDM SD 420
232A	JP	268537.332	5785040.11	600	600	225	20.975	21.955	225	20.975	21.955	0.98	CLASS C	Refer IDM SD 420
233	GP	268256.05	5785042.167	900	900	233A	225	20.341	375	20.311	21.36	1.049	CLASS D	Refer IDM SD 455
233A	JP	268257.813	5785056.445	600	600	225	20.413	21.334	225	20.413	21.334	0.921	CLASS C	Refer IDM SD 420
212A	JP	268484.28	5785046.914	600	600	225	20.98	21.955	225	20.98	21.955	0.974	CLASS C	Refer IDM SD 420
213A	JP	268447.16	5785051.622	600	600	225	20.912	21.944	225	20.912	21.944	1.032	CLASS C	Refer IDM SD 420
214A	JP	268408.918	5785056.589	600	600	225	20.935	21.946	225	20.935	21.946	1.011	CLASS C	Refer IDM SD 420
217A	JP	268296.943	5785071.224	900	900	225	20.665	21.979	225	20.665	21.979	1.314	CLASS B	Refer IDM SD 425
218A	JP	268301.013	5785102.873	900	900	225	20.62	21.99	225	20.62	21.99	1.37	CLASS B	Refer IDM SD 425
223A	JP	268611.59	5785062.274	600	600	225	20.749	22.006	225	20.749	22.006	1.258	CLASS C	Refer IDM SD 420
224A	JP	268569.932	5785067.617	600	600	225	20.774	21.981	225	20.774	21.981	1.208	CLASS C	Refer IDM SD 420
225A	JP	268528.273	5785072.96	600	600	225	20.793	21.981	225	20.793	21.981	1.189	CLASS C	Refer IDM SD 420
227A	JP	268432.114	5785085.798	600	600	225	20.822	21.969	225	20.822	21.969	1.147	CLASS C	Refer IDM SD 420
228A	JP	268383.574	5785092.024	600	600	225	20.928	21.969	225	20.928	21.969	1.04	CLASS C	Refer IDM SD 420
202	GP	268608.563	5784720.493	900	1500	GPT1	300	18.136	300	18.181	21	4.069	CLASS D	Refer IDM SD 455
GPT1	G.P.T.	268614.825	5784726.524	0	0	202A	300	18.181	300	18.181	21	4.069	CLASS D	Install in accordance with Manufacturers specifications

NOTE:

- ALL SETOUT POINTS FOR PITS TO BE AT GEOMETRIC CENTRE
- SEP/GSEP/JP PITS NOTED WITH 'x' TO BE HAUNCHED TO A 900x600 (INTERNAL) OPENING WITH APPROPRIATE COVER.
- ALL GRATED PITS TO BE HAUNCHED TO A 900x900 (INTERNAL) OPENING WITH APPROPRIATE COVER.
- DSEP PITS NOTED WITH 'xx' TO BE HAUNCHED TO A 1900x600 (INTERNAL) OPENING WITH APPROPRIATE COVER.
- ALL HAUNCHING TO BE IN ACCORDANCE WITH IDM SD 410
- ALL DRAINAGE PIT LIDS ARE TO BE FIBRE REINFORCED PLASTIC (FRP) OR APPROVED EQUIVALENT TO THE REQUIRED CLASS LOADING, ALL DRAINAGE PITS WITHIN THE PAVEMENT ARE TO BE CLASS D GATIC.



<table border="1"> <tr> <th>ISSUE</th> <th>ISSUED FOR</th> <th>DRAWN</th> <th>APPROVED</th> <th>DATE</th> <th>ISSUE</th> <th>ISSUED FOR</th> <th>DRAWN</th> <th>APPROVED</th> <th>DATE</th> </tr> <tr> <td>01</td> <td>FOR APPROVAL</td> <td>A.S.</td> <td>G.R.</td> <td>01/10/2024</td> <td></td> <td></td> <td></td> <td></td> <td></td> </tr> <tr> <td>02</td> <td>FOR APPROVAL</td> <td>A.S.</td> <td>G.R.</td> <td>06/12/2024</td> <td></td> <td></td> <td></td> <td></td> <td></td> </tr> <tr> <td>03</td> <td>FOR APPROVAL</td> <td>G.R.</td> <td>G.R.</td> <td>24/11/2025</td> <td></td> <td></td> <td></td> <td></td> <td></td> </tr> </table>	ISSUE	ISSUED FOR	DRAWN	APPROVED	DATE	ISSUE	ISSUED FOR	DRAWN	APPROVED	DATE	01	FOR APPROVAL	A.S.	G.R.	01/10/2024						02	FOR APPROVAL	A.S.	G.R.	06/12/2024						03	FOR APPROVAL	G.R.	G.R.	24/11/2025						<table border="1"> <tr> <td>DESIGNED: A. SHIELS</td> <td>DATE: SEPTEMBER 2024</td> </tr> <tr> <td>DRAWN: A. SHIELS</td> <td>SCALE: REFER SHEET</td> </tr> <tr> <td>CHECKED: I. REGUSCI</td> <td>SHEET SIZE: A1</td> </tr> <tr> <td>APPROVED: G. ROACHE</td> <td>SURVEY: STANTEC GEELONG</td> </tr> <tr> <td>PE VIC No: PE0009117</td> <td>POS No: N/A</td> </tr> <tr> <td>SIGNED: <i>[Signature]</i></td> <td>VERSION: -</td> </tr> <tr> <td>PERMIT No: PP-1342-2022</td> <td>WORKS SHALL NOT COMMENCE UNTIL PLANS ARE SIGNED AND APPROVED FOR CONSTRUCTION</td> </tr> </table>	DESIGNED: A. SHIELS	DATE: SEPTEMBER 2024	DRAWN: A. SHIELS	SCALE: REFER SHEET	CHECKED: I. REGUSCI	SHEET SIZE: A1	APPROVED: G. ROACHE	SURVEY: STANTEC GEELONG	PE VIC No: PE0009117	POS No: N/A	SIGNED: <i>[Signature]</i>	VERSION: -	PERMIT No: PP-1342-2022	WORKS SHALL NOT COMMENCE UNTIL PLANS ARE SIGNED AND APPROVED FOR CONSTRUCTION	<p>Level 1, Myers Street (PO Box 1137) Geelong, VIC Australia 3220 Phone +61 3 5202 4600 Fax +61 3 5202 4691 Web: www.stantec.com</p>	<table border="1"> <tr> <td>CLIENT: THORNTON ENGINEERING AUSTRALIA P.O. BOX 245 CORIO, VIC, 3214</td> <td>PROJECT: PAVEMENT AND DRAINAGE WORKS PROPOSED BUILDING EXTENSION THORNTON ENGINEERING AUSTRALIA 370 BACCHUS MARSH ROAD, CORIO, VIC, 3214 CITY OF GREATER GEELONG</td> </tr> </table>	CLIENT: THORNTON ENGINEERING AUSTRALIA P.O. BOX 245 CORIO, VIC, 3214	PROJECT: PAVEMENT AND DRAINAGE WORKS PROPOSED BUILDING EXTENSION THORNTON ENGINEERING AUSTRALIA 370 BACCHUS MARSH ROAD, CORIO, VIC, 3214 CITY OF GREATER GEELONG	<table border="1"> <tr> <td>CIVIL DRAWING</td> </tr> <tr> <td>DRAWING TITLE: DRAINAGE PIT SCHEDULE & TYPICAL DETAILS</td> </tr> <tr> <td>Stantec Ref. No: 304.400900-201</td> </tr> </table>	CIVIL DRAWING	DRAWING TITLE: DRAINAGE PIT SCHEDULE & TYPICAL DETAILS	Stantec Ref. No: 304.400900-201
ISSUE	ISSUED FOR	DRAWN	APPROVED	DATE	ISSUE	ISSUED FOR	DRAWN	APPROVED	DATE																																																						
01	FOR APPROVAL	A.S.	G.R.	01/10/2024																																																											
02	FOR APPROVAL	A.S.	G.R.	06/12/2024																																																											
03	FOR APPROVAL	G.R.	G.R.	24/11/2025																																																											
DESIGNED: A. SHIELS	DATE: SEPTEMBER 2024																																																														
DRAWN: A. SHIELS	SCALE: REFER SHEET																																																														
CHECKED: I. REGUSCI	SHEET SIZE: A1																																																														
APPROVED: G. ROACHE	SURVEY: STANTEC GEELONG																																																														
PE VIC No: PE0009117	POS No: N/A																																																														
SIGNED: <i>[Signature]</i>	VERSION: -																																																														
PERMIT No: PP-1342-2022	WORKS SHALL NOT COMMENCE UNTIL PLANS ARE SIGNED AND APPROVED FOR CONSTRUCTION																																																														
CLIENT: THORNTON ENGINEERING AUSTRALIA P.O. BOX 245 CORIO, VIC, 3214	PROJECT: PAVEMENT AND DRAINAGE WORKS PROPOSED BUILDING EXTENSION THORNTON ENGINEERING AUSTRALIA 370 BACCHUS MARSH ROAD, CORIO, VIC, 3214 CITY OF GREATER GEELONG																																																														
CIVIL DRAWING																																																															
DRAWING TITLE: DRAINAGE PIT SCHEDULE & TYPICAL DETAILS																																																															
Stantec Ref. No: 304.400900-201																																																															



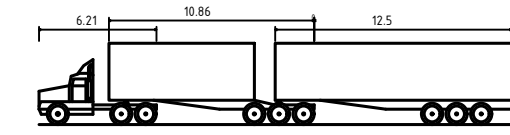
NOTE
INTERSECTION DESIGN GENERALLY IN ACCORDANCE WITH VIC ROADS GUIDELINE DRAWING GD4010 PER PLANNING PERMIT PP-1342-2022

NOTE: ENTRANCE PAVEMENT
ENTRANCE PAVEMENT TO BE IN ACCORDANCE WITH VIC ROADS GUIDELINE DRAWING GD4010.

SETOUT I - PAVEMENT SETOUT

ID	EASTING	NORTHING	RL
11	26824.1865	5785050.264	214.30
12	268230.299	5785053.254	214.73
13	268219.846	5785061.901	215.23
14	268216.973	5785069.406	215.67
15	268214.827	5785081.967	21.794
16	268217.312	5785026.103	21.339
17	268218.995	5785026.189	21.340
18	268221.292	5785032.791	21.343
19	268230.992	5785038.948	21.347
110	268238.131	5785039.046	21.350
111	268242.377	5785039.104	21.430
112	268242.158	5785043.883	21.430

VEHICLE TURNING MOVEMENTS
N.T.S

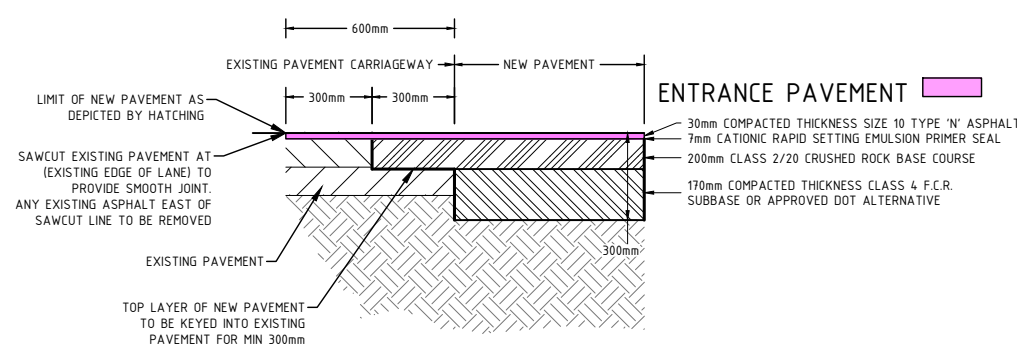
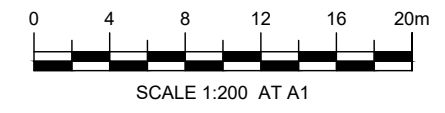


B-Double (25.0m)

Overall Length	25.000m
Overall Width	4.300m
Overall Body Height	4.300m
Min Body Ground Clearance	0.540m
Track Width	2.500m
Lock-to-lock time	6.00s
Curb to Curb Turning Radius	15.000m

CHECK VEHICLE

INTERSECTION LAYOUT PLAN 1



BANKS ROAD PAVEMENT CONNECTION DETAIL
SCALE NTS

PROPOSED		EXISTING	
	KERB AND CHANNEL		TITLE
	ENTRANCE PAVEMENT		EASEMENT
	ASPHALT PAVEMENT		OVERHEAD ELECTRICAL
	STORMWATER DRAINAGE PIPE/PIT		SEWER
	TOP OF BATTER		WATER
	TOE OF BATTER		STORMWATER DRAINAGE PIPE/PIT (TO BE REMOVED)
	MAJOR CONTOUR (0.25m)		STORMWATER DRAINAGE PIPE/PIT (TO REMAIN)
	MINOR CONTOUR (0.05m)		VEGETATION (TO REMAIN)
			FENCE
			TOP OF BATTER
			TOE OF BATTER



WARNING
BEWARE OF ABOVE GROUND SERVICES
ANY EXCAVATION IN THE VICINITY OF POWER POLES TO BE IN ACCORDANCE WITH THE ELECTRICAL SAFETY (NETWORK ASSETS) REGULATIONS 1999 - RULE 36 (d). NO GO ZONE RULES MAY ALSO APPLY

WARNING
BEWARE OF UNDERGROUND SERVICES
THE LOCATIONS OF UNDERGROUND SERVICES ARE APPROXIMATE ONLY AND THEIR EXACT POSITION SHOULD BE PROVEN ON SITE. NO GUARANTEE IS GIVEN THAT ALL EXISTING SERVICES ARE SHOWN.

ISSUE	ISSUED FOR	DRAWN	APPROVED	DATE	ISSUE	ISSUED FOR	DRAWN	APPROVED	DATE	DESIGNED: A.SHIELS	DATE: SEPTEMBER 2024	<p>Level 1, Myers Street (PO Box 1137) Geelong, VIC Australia 3220 Phone +61 3 5202 4600 Fax +61 3 5202 4691 Web: www.stantec.com</p>	CLIENT: THORNTON ENGINEERING AUSTRALIA P.O. BOX 245 CORIO, VIC, 3214	PROJECT: PAVEMENT AND DRAINAGE WORKS PROPOSED BUILDING EXTENSION THORNTON ENGINEERING AUSTRALIA 370 BACCHUS MARSH ROAD, CORIO, VIC, 3214 CITY OF GREATER GEELONG	CIVIL DRAWING DRAWING TITLE: INTERSECTION DETAIL PLAN Stantec REF. No: 304400900-201 SHEET: 18 OF 18 REV: 03
01	FOR APPROVAL	A.S.	G.R.	01/10/2024					DRAWN: A.SHIELS	SCALE:					
02	FOR APPROVAL	A.S.	G.R.	06/12/2024					CHECKED: I.REGUSCI	SHEET SIZE: A1					
03	FOR APPROVAL	G.R.	G.R.	24/11/2025					APPROVED: G.ROACHE	SURVEY: STANTEC GEELONG					
									PE VIC No: PE0009117	VERSION: -					