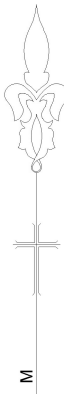


This copied document is made available for the sole purpose of enabling its consideration and review as part of a planning process under the Planning and Environment Act 1987. The document must not be used for any purpose which may breach copyright legislation

139-147 BONNYVALE RD
SUBJECT TO
DEVELOPMENT
APPLICATION
PP-448-2025'

EXISTING DWELLING
LOCATED AT 137
BONNYVALE RD'



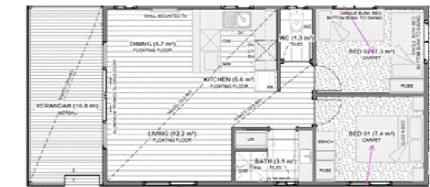
PROPOSED CABIN TYPES

Site / Cabin Number	Site Area m2	Building Area m2	Cabin Type	Site / Cabin Number	Site Area m2	Building Area m2	Cabin Type
1	132	58	Type 2	32	103	53	Type 1
2	132	58	Type 2	33	103	53	Type 1
3	132	58	Type 2	34	103	53	Type 1
4	132	58	Type 2	35	103	53	Type 1
5	132	58	Type 2	36	103	53	Type 1
6	132	58	Type 2	37	103	53	Type 1
7	132	58	Type 2	38	103	53	Type 1
8	132	58	Type 2	39	288	86	Type 3
9	132	58	Type 2	40	288	86	Type 3
10	132	58	Type 2	41	288	86	Type 3
11	132	58	Type 2	42	288	86	Type 3
12	132	58	Type 2	43	288	86	Type 3
13	132	58	Type 2	44	164	53	Type 1
14	132	58	Type 2	45	114	53	Type 1
15	132	58	Type 2	46	115	53	Type 1
16	132	58	Type 2	47	113	53	Type 1
17	132	58	Type 2	48	119	53	Type 1
18	132	58	Type 2	49	103	53	Type 1
19	132	58	Type 2	50	115	28	Type 5
20	132	58	Type 2	51	100	28	Type 5
21	132	58	Type 2	52	103	28	Type 5
22	132	58	Type 2	53	103	28	Type 5
23	132	53	Type 1	54	135	53	Type 1
24	132	53	Type 1	55	115	53	Type 1
25	132	53	Type 1	56	125	53	Type 1
26	132	53	Type 1	57	119	53	Type 1
27	132	53	Type 1	58	116	53	Type 1
28	132	53	Type 1	59	125	53	Type 1
29	132	53	Type 1	60	158	78	Type 4
30	132	53	Type 1	61	106	58	Type 2
31	153	53	Type 1	62	103	58	Type 2

Type 1 - 2-bedroom sleeps 6



Type 2 - 2-bedroom sleeps 6



Type 3 - Accessible 3-bedroom sleeps 7



Type 4 Accessible 2-bedroom Sleeps 5



Type 5 - Studio Complex 4 rooms - each sleep 2



PROPOSED NEW
DEVELOPMENT 5.63 ACRES

GDA 94 MGA 55
NOTE : - INDIVIDUAL SITE BOUNDARYS ARE APPROX ONLY



CONCEPT ONLY

COLLENDINA HOLIDAY PARK
177 BONNYVALE RD, OCEAN GROVE VIC 3226
PROPOSED CABIN TYPES

CLIENT:

DRAWN:

SCALE:
1000 AT A3

SHEET:
A3

JOB:

DATE: 23/4/2026

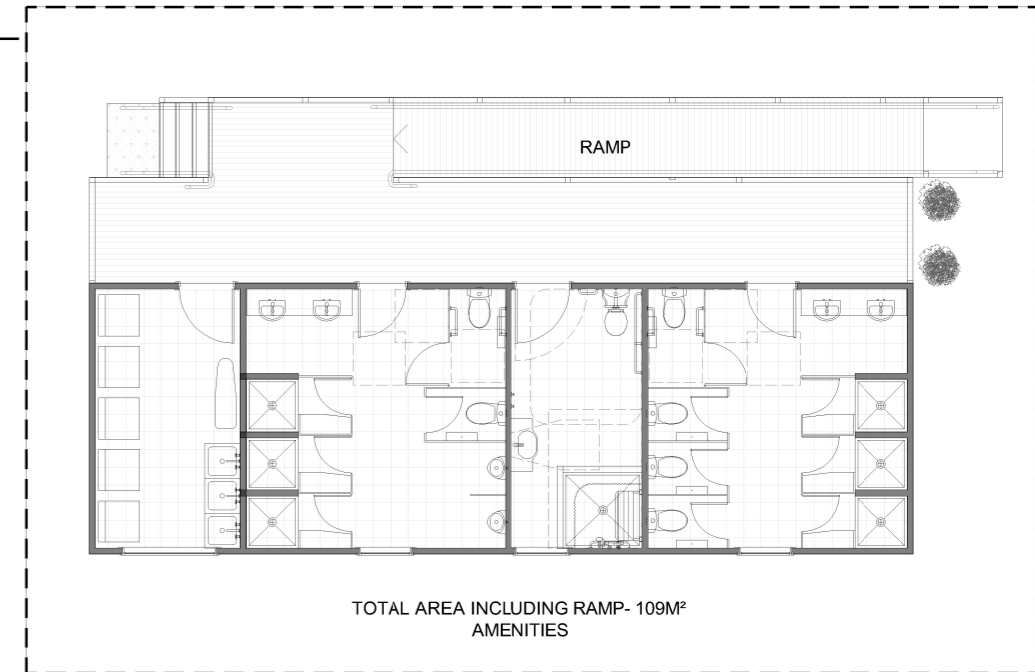
This copied document is made available for the sole purpose of enabling its consideration and review as part of a planning process under the Planning and Environment Act 1987. The document must not be used for any purpose which may breach copyright legislation

139-147 BONNYVALE RD
SUBJECT TO
DEVELOPMENT
APPLICATION
PP-448-2025'

EXISTING DWELLING
LOCATED AT 137
BONNYVALE RD'



Type 1 - 2-bedroom sleeps 6



TOTAL AREA INCLUDING RAMP- 109M²
AMENITIES

NTS AT A3

1000 AT A3

PROPOSED NEW
DEVELOPMENT 5.63 ACRES

GDA 94 MGA 55
NOTE : - INDIVIDUAL SITE BOUNDARYS ARE APPROX ONLY



CONCEPT ONLY

COLLENDINA HOLIDAY PARK
177 BONNYVALE RD, OCEAN GROVE VIC 3226
PROPOSED DEVELOPMENT

CLIENT:

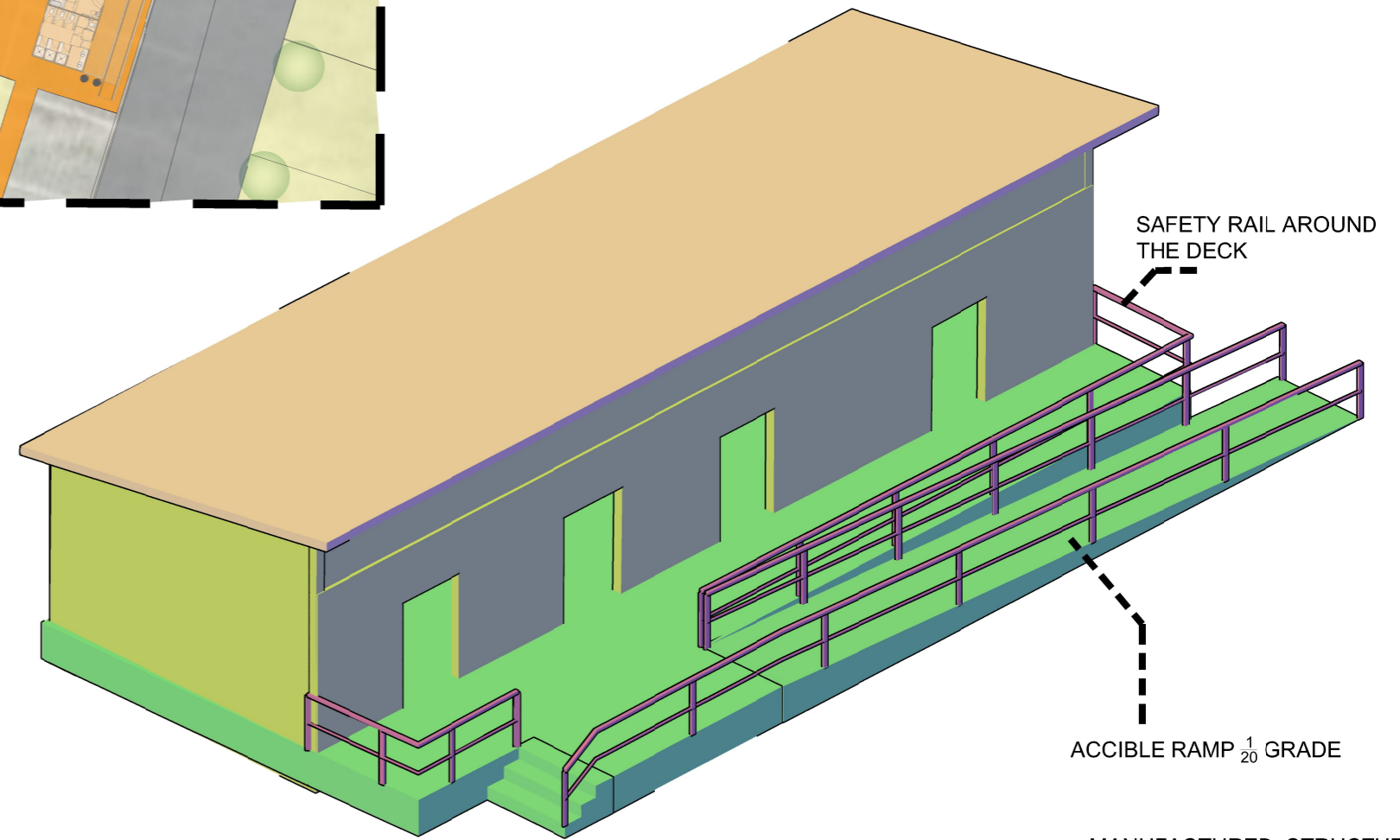
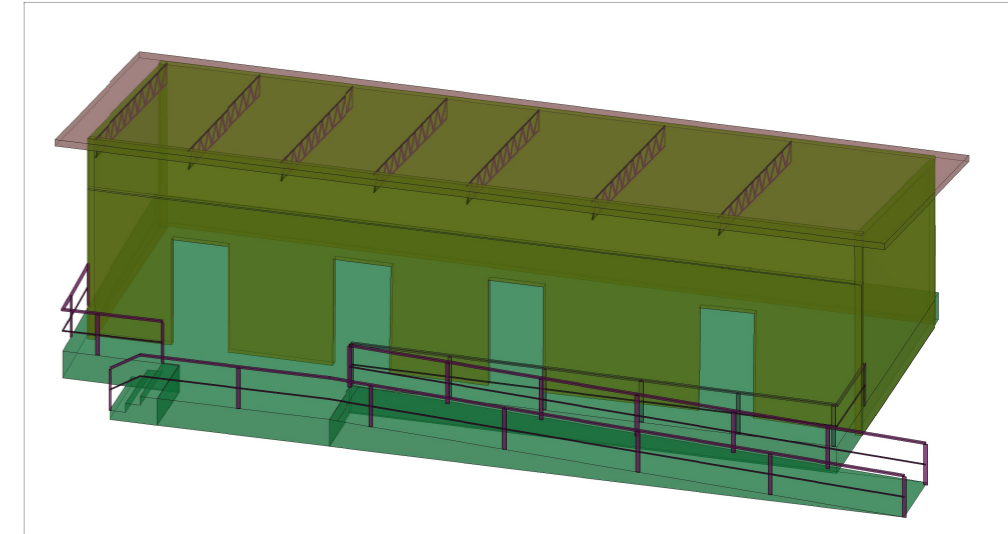
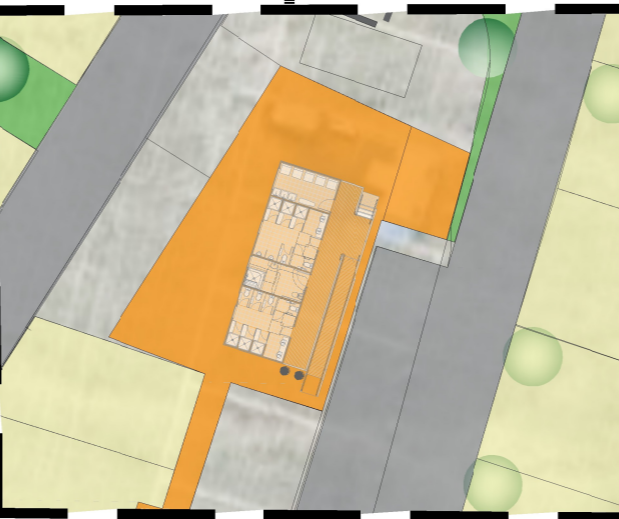
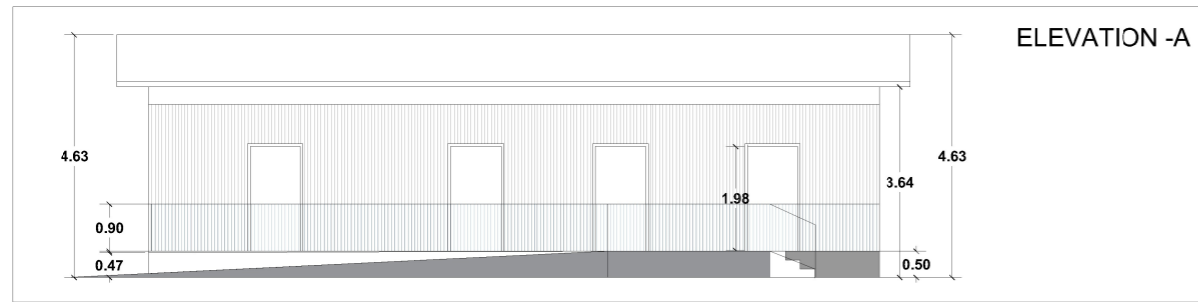
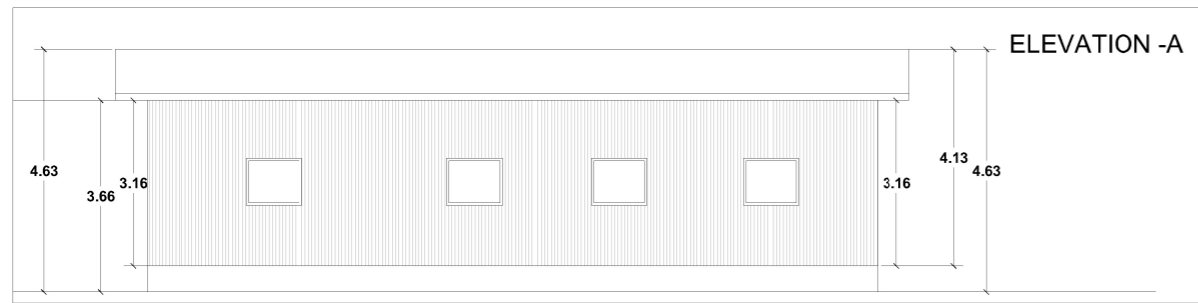
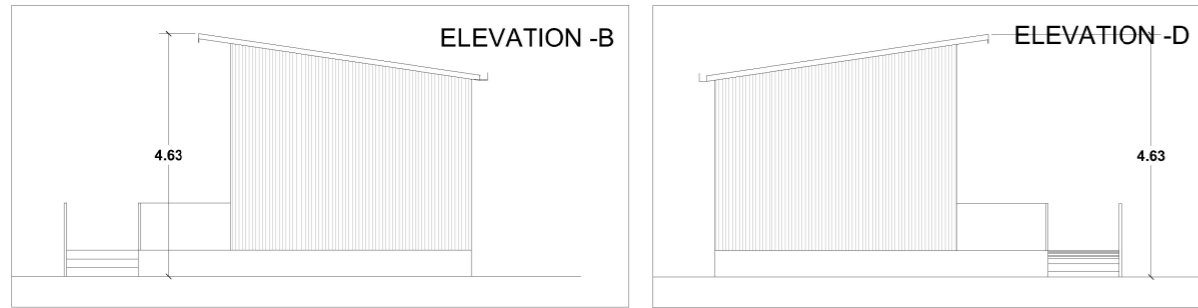
DRAWN:

SCALE:
1000 AT A3

SHEET:
A3

JOB:

DATE: 23/4/2026



PLAN

NOTE : - CONCEPT DESIGN WITH PERSPECTIVES



COLLENDINA HOLIDAY PARK
177 BONNYVALE RD, OCEAN GROVE VIC 3226
PROPOSED NEW SITES (38)

CLIENT:

DRAWN:

SCALE:
1:150 AT A3

SHEET:
A3

JOB:

DATE:
04/11/2025

This copied document is made available for the sole purpose of enabling its consideration and review as part of a planning process under the Planning and Environment Act 1987. The document must not be used for any purpose which may breach copyright legislation



This copied document is made available for the sole purpose of enabling its consideration and review as part of a planning process under the Planning and Environment Act 1987. The document must not be used for any purpose which may breach copyright legislation

LEGAL DISCLAIMER

This document has been prepared by or on behalf of OneMap aus Pty Ltd 611 326 526 (OneMap) solely for the use and specific purposes of the person that exported it from the OneMap system (Direct Recipient).

This document should be used as a general guide only, and is not a comprehensive source of information in relation to the properties referred to. To the extent permitted by law, OneMap accepts no liability for any loss or damage you may suffer in connection with any reliance on this document and we recommend that you independently verify the currency, accuracy and completeness of information contained in this document.

This document may include content originating from parties other than OneMap (Third Party Content), including from the parties listed in any attributions in this document or in the table below. OneMap does not own any of the rights in the Third Party Content and is not in any way responsible for the currency, accuracy or completeness of such Third Party Content. Your rights to use such Third Party Content will be determined by the licence terms and conditions prescribed by the source of that Third Party Content.

This disclaimer must not be removed from this document or any other document that is created using information contained in this document.

DATA ATTRIBUTION

Dataset Name	Provider	Attribution	Licence	Current as of
Properties	Geoscape Australia licensed by the Commonwealth of Australia	Incorporates or developed using custom Geoscape Property, Cadastre and G-NAF Core	© Geoscape Australia 2025 Copyright and Disclaimer Notice.	18/11/2025

This copied document is made available for the sole purpose of enabling its consideration and review as part of a planning process under the Planning and Environment Act 1987.
The document must not be used for any purpose which may breach copyright legislation