

 Subject Site       200m Radius of Site

Figure 1 – Aerial of Site

This copied document is made available for the sole purpose of enabling its consideration and review as part of a planning process under the Planning and Environment Act 1987. The document must not be used for any purpose which may breach copyright legislation

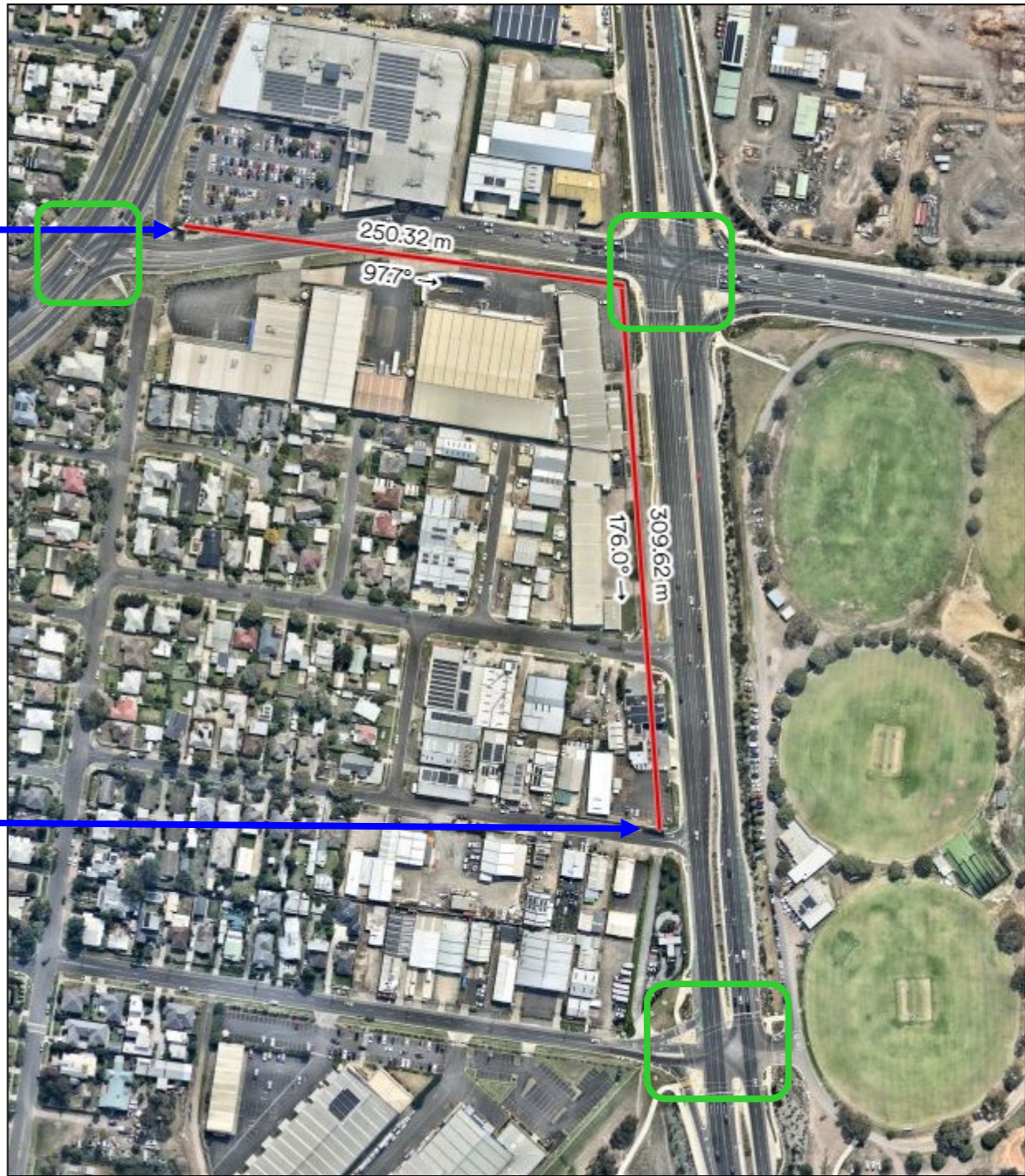
PHOTO MONTAGE – 154-178 BARWON HEADS ROAD, BELMONT



Sky Sign – Corner of Settlement and Breakwater Roads



Non Electronic Promotion Sign – Corner Grayling Street and Barwon Heads Road



 Signalised Intersection

Figure 2 – Sky/Non-Electronic Promotion Signs in Vicinity

This copied document is made available for the sole purpose of enabling its consideration and review as part of a planning process under the Planning and Environment Act 1987. The document must not be used for any purpose which may breach copyright legislation

PHOTO MONTAGE – 154-178 BARWON HEADS ROAD, BELMONT



Figure 3 - Signalised Intersection – Barwon Heads and Crows Road, approximately 416 metres to south



Figure 4 – Southern Approach – Northbound Traffic

This copied document is made available for the sole purpose of enabling its consideration and review as part of a planning process under the Planning and Environment Act 1987. The document must not be used for any purpose which may breach copyright legislation



Figure 5 – Western Approach – Existing Sky Sign, Spotlight/Anaconda complex



Figure 6 – Aerial – Separation distance between major promotion signs Portarlington Road, Moolap

This copied document is made available for the sole purpose of enabling its consideration and review as part of a planning process under the Planning and Environment Act 1987. The document must not be used for any purpose which may breach copyright legislation

PHOTO MONTAGE – 154-178 BARWON HEADS ROAD, BELMONT



Figure 7 – Aerial – Separation distance between major promotion signs Bellarine Highway, Moolap

This copied document is made available for the sole purpose of enabling its consideration and review as part of a planning process under the Planning and Environment Act 1987. The document must not be used for any purpose which may breach copyright legislation



Figure 8 – Aerial – Separation distance between major promotion signs Latrobe Terrace, Geelong (one recently approved)