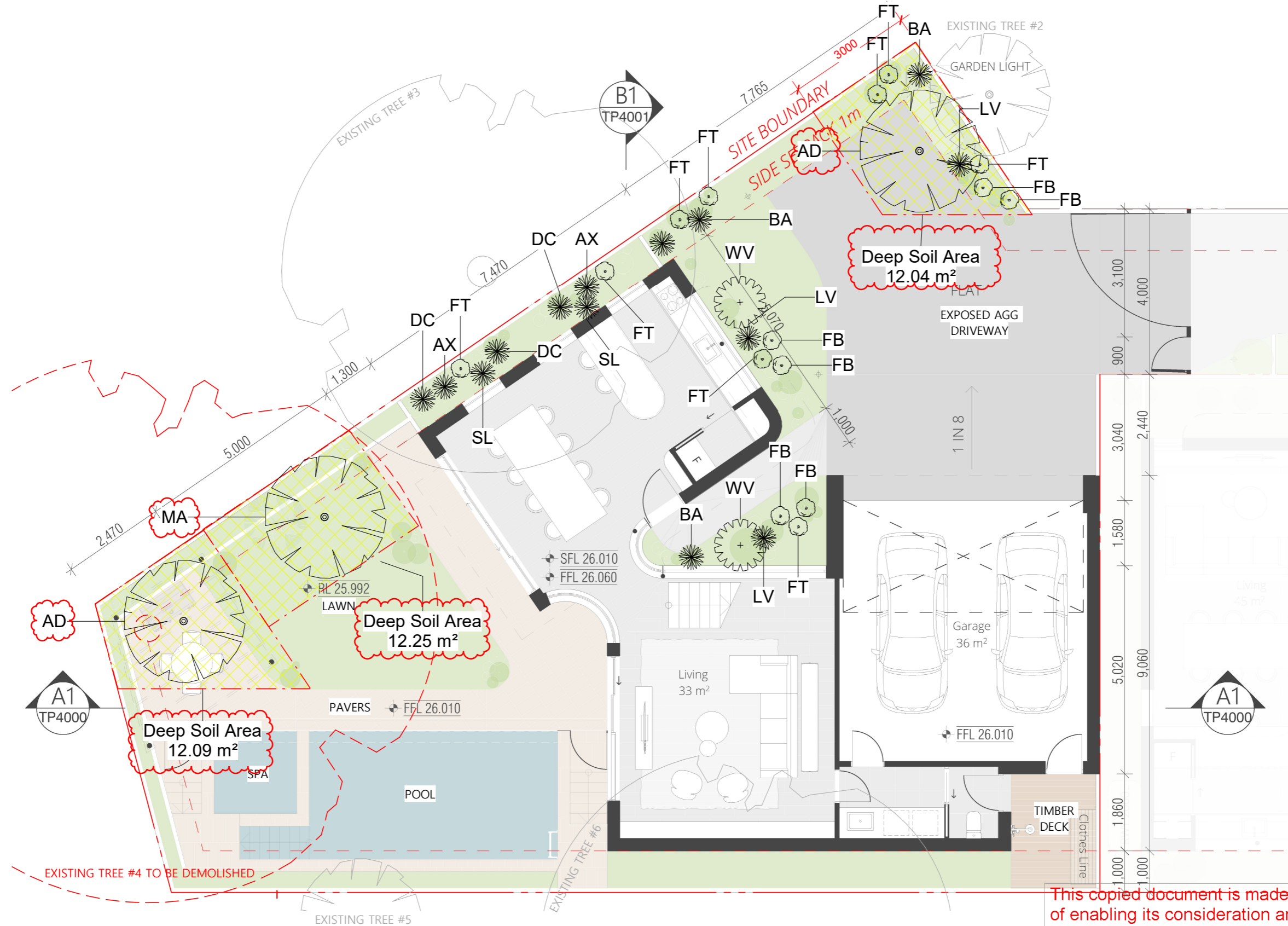


This copied document is made available for the sole purpose of enabling its consideration and review as part of a planning process under the Planning and Environment Act 1987. The document must not be used for any purpose which may breach copyright legislation



This copied document is made available for the sole purpose of enabling its consideration and review as part of a planning process under the Planning and Environment Act 1987. The document must not be used for any purpose which may breach copyright legislation

Planting Schedule									
Tag	Family	Botanical Name	Common Name	Pot Size	Mature Size	Origin	Leaf	Count	Comments
AD	Tree 5m+ (20-04-17)	Allocastrum Verticillata	Drooping Sheoke	300mm	4-11 x 3-6	Native	Evergreen	4	Mature Canopy width - 6m (28.2m ²)
AV	M-L Shrub (060917)	Acacia Verticillata	Prickly Moses	250mm	2-6 x 3-5	Aus	N/A	1	
AX	S-M Shrub (060917)	Amperea Xiphoclada	Broom Spurge	200mm	0.3-0.8 x 0.4-0.5	Native	N/A	2	
BA	S-M Shrub (060917)	Brunonia Australis	Blue Pincushion	150mm	0.5 X 0.15	Native	N/A	3	
DC	S-M Shrub (060917)	Dillwynia Cinerascens	Grey Parrot-Pea	150mm	0.6 x 1.5	Native	N/A	6	
DV	M-L Shrub (060917)	Dodonaea Viscosa	Giant Hop Bush	250mm	1-3 x 1-3	Aus	N/A	1	
FB	Groundcover (20-04-17)	Dianella Revoluta	Black Anther Flex Lily	150mm	0.5-1.5 x 2	Aus	N/A	23	
FT	Groundcover (20-04-17)	Poa Labillardierei	Tussock Grass	150mm	0.8 x 0.8m	Aus	N/A	12	
LB	S-M Shrub (060917)	Leucophyta Brownii	Cushion Bush	150mm	0.3 x 0.3	Native	N/A	4	
LV	S-M Shrub (060917)	Leucopogon Virgatus	Common Beard-Heath	200mm	0.3-1 x 0.2-0.6	Native	N/A	6	
MA	Tree 5m+ (20-04-17)	Acacia dealbata	Silver Wattle	300mm	8 x 6	Aus	Evergreen	2	Mature Canopy width - 4m (12.5m ²)
OA	M-L Shrub (060917)	Olearia axillaris	Coast Daisy-bush	250mm	1-2 x 1-1.5	Aus	N/A	1	
SL	S-M Shrub (060917)	Swainsona lessertiifolia	Coast Swaison-pea	150mm	0.2 X 0.8	Native	N/A	2	
WV	M-L Shrub (060917)	Westringia Varieties	Native Rosemary	200mm	1.5 x 1.5	Aus	N/A	6	

This copied document is made available for the sole purpose of enabling its consideration and review as part of a planning process under the Planning and Environment Act 1987. The document must not be used for any purpose which may breach copyright legislation

