



ABN 94 875 372 810
Suite 6, 7 Mayfield St
Abbotsford VIC 3067
P.O. Box 280
Clifton Hill VIC 3068
phone (03) 9429 4777
fax (03) 9429 4799

ARMSTRONG CREEK WEST PRECINCT

DRAFT Addendum to Desktop Cultural Heritage Assessment

Prepared by Petra Schell

8 November 2010

INTRODUCTION

This brief addendum report to a Desktop Cultural Heritage Assessment prepared for the Armstrong Creek West Precinct Structure Plan (PSP) (Turnbull 2009) was prepared by Ochre Imprints to address comments provided by the City of Greater Geelong on the report by Turnbull (2009). As the Desktop Cultural Heritage Assessment report had already been finalised and lodged with Aboriginal Affairs Victoria (AAV) the preparation of an Addendum was preferable to withdrawing and resubmitting the report.

The Armstrong Creek West PSP forms one of seven precincts that comprise the Armstrong Creek Urban Growth Boundary. Plans showing the Framework Plan and Precincts Plan within the Armstrong Creek Urban Growth Boundary area are attached.

The addendum provides specific information regarding the following comments raised by the City of Greater Geelong:

- whether an archaeological field survey is required as part of the cultural heritage assessment or whether a desktop assessment is sufficient to inform the assessment;
- engagement with the Registered Aboriginal Party (RAP) Wathaurung Aboriginal Corporation;
- the location and status of CHMPs in the Armstrong Creek West Precinct;

- discussion of cultural heritage assessments of adjoining precincts (Long 2009; Terraculture 2009);
- the nature and location of two Heritage Overlays on land abutting the precinct.
- feedback from Aboriginal Affairs Victoria regarding the Desktop Cultural Heritage Assessment (Turnbull 2009) and this addendum.

ADDITIONAL ABORIGINAL ARCHAEOLOGICAL INFORMATION

Adequacy of Desktop Cultural Heritage Assessment

A cultural heritage survey has not been undertaken as part of the cultural heritage assessment to inform the Armstrong Creek West PSP. While originally a cultural heritage survey was planned, it was considered unnecessary in this instance as the study area has been subject to previous cultural heritage surveys, and further archaeological field survey, in the absence of high ground surface visibility, would unlikely be successful in identifying enough additional Aboriginal places that would provide more detailed information for this assessment. In addition, some recent field work, which included a subsurface testing component, has been undertaken by Ochre Imprints in the Precinct. This has provided some additional more detailed information on the archaeology of the Precinct. This issue is discussed in further detail below.

The Precinct has been subject to several cultural heritage surveys (Weaver 1994; Paynter & Rhodes 2006) which involved vehicular surveys of roads in the study area and spot inspections of any area's with surface visibility. These surveys did not identify any Aboriginal cultural heritage in the Precinct. However, several cultural heritage surveys have been undertaken that did result in the identification of both scarred trees and stone artefact scatters in the study area, for instance Heritage Insight recorded VAHR 7721-0822, -0823, -0824, -0825 and -0870 along Armstrong Creek in 2007 and Vincent Clark and Associates recorded VAHR 7721-0896 and -0939 in 2008. Archaeological reports have not been lodged with Aboriginal Affairs Victoria for these surveys, and therefore could not be accessed by Ochre Imprints.

The previous cultural heritage surveys, whether they have associated reports or not, appear to have resulted in a high level of survey coverage along the Armstrong Creek corridor, and a sample survey of area's away from this corridor. It is considered that they have resulted in the documentation of a reasonable sample of obtrusive Aboriginal places (i.e. scarred trees) in the study area, which by their nature are readily identifiable during such surveys, and a small sample of unobtrusive Aboriginal places (i.e. surface and subsurface occurrences of stone artefacts).

In order to gain more detailed information on the archaeological record of the study area at this time, further cultural heritage survey would need to focus on identifying further surface and subsurface occurrences of stone artefacts which rely on ground surface visibility afforded by ploughing, or archaeological subsurface testing. The pastoral use of much of the study area, means that ploughed surfaces are rarely available for field survey. Indeed thick grass cover has been noted as hindering the effectiveness of most previous archaeological surveys (Turnbull 2009, 33-35). Subsurface testing to overcome constraints posed by limited ground surface visibility was considered to be outside the scope of this study - particularly as the previous archaeological surveys already carried out in the study area was similar in scope to those undertaken to inform other PSPs (Long 2009). However, recent field work for a CHMP (No.11385) undertaken by Ochre Imprints in the Precinct, included a subsurface testing component, and has provided important additional information on the nature of Aboriginal cultural heritage in the Precinct. The results of this field work are briefly discussed below.

Location and Status of CHMPs

According to records held by Aboriginal Affairs Victoria, accessed on 2 September 2010, notice of intents to undertake two CHMPs that include parts of the Precinct have been lodged. These are CHMP 10692 and CHMP 11385 - and their locations are shown on the figure below.

No information is available regarding either of these CHMPs at AAV, however as Ochre Imprints are undertaking CHMP 11385 - a summary of the preliminary results for this CHMP are provided here.

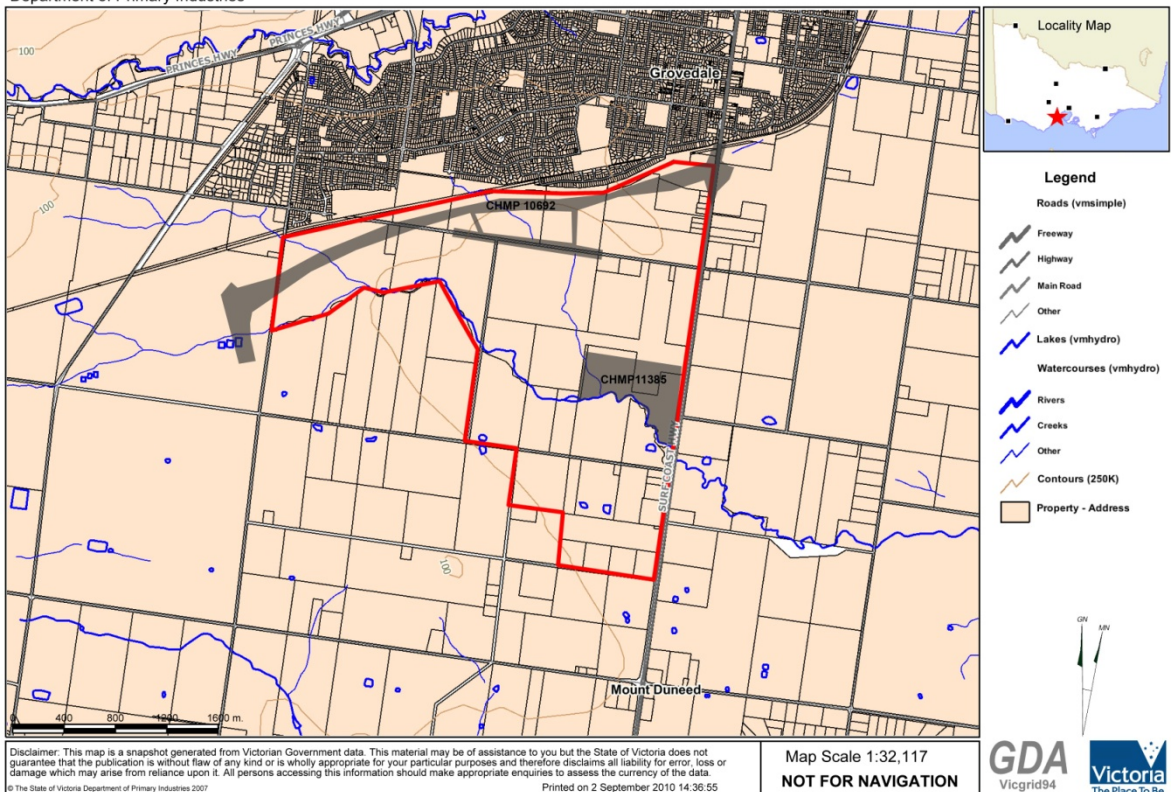
CHMP 11385 covers the northern banks and adjacent plains of Armstrong Creek. A field investigation has involved a pedestrian survey and subsurface testing components. Surface visibility at the time of the field survey was good in some parts of the activity area due to recent ploughing. The subsurface testing program resulted in the excavation of ten 1 x 1 m excavation pits and ten 0.5 x 0.5 m shovel test pits representing an excavated, and fully sieved, deposit of 12.5 m² (or 4.9 m³).

The field investigation resulted in the identification of 24 surface stone artefacts and 218 subsurface stone artefacts with 168 of these identified in a single 1 x 1 m excavation pit. All of the stone artefacts were identified within 40 m of Armstrong Creek and a tributary of the creek. The subsurface testing determined that the average artefact density across the activity area was 17.4 per m² (or 44.9 per m³). However, all of the stone artefacts were identified in the Armstrong Creek corridor, and along a tributary of Armstrong Creek, meaning that the average artefact density is higher in this corridor - although the

high number of stone artefacts in a single excavation pit may have distorted this result. While the area has been impacted by ploughing some of the artefacts have not been widely dispersed through this practice as is revealed by the presence of 168 stone artefacts in a single excavation pit. While the artefacts are unlikely to be *in situ* because of ploughing and bioturbation they appear to have retained some spatial integrity.

These results have some implications for the findings of Turnbull (2009). Firstly they highlight that the Armstrong Creek corridor was a much greater focus of Aboriginal occupation than anticipated - with high density stone artefact scatters indicating that stone tool manufacturing activities were carried out here. However, the evidence of this occupation is much more focused on a narrow corridor (c. 40 m) on either side of Armstrong Creek and its tributaries, with these results in combination with the VAHR register showing a clear decrease in Aboriginal cultural heritage outside of this corridor. The findings support Turnbull (2009) in that they highlight that stone artefacts are the most common type of Aboriginal cultural heritage in the Precinct.

Armstrong Creek West Precinct CHMPs
Department of Primary Industries



Review of Cultural Heritage Planning Studies for adjoining Precincts

Two cultural heritage planning studies have been undertaken of adjoining precincts. These are briefly summarised below and the implications of their results discussed in relation to the study area.

Armstrong Creek East Precinct (Long 2009).

A cultural heritage review and overview field survey was undertaken as part of the Armstrong Creek East Precinct in order to provide an overview of the archaeological character, and heritage issues, in the Precinct.

The Aboriginal cultural heritage component of this review determined that limited parts of the Precinct had been subject to previous archaeological field survey, resulting in the identification of three stone artefact scatters, two scarred trees and a post-contact Aboriginal place in the study area. A brief field survey undertaken as part of the review, identified 35 stone artefacts all within proximity to Armstrong Creek. These were considered to represent seven Aboriginal places, although Long highlighted that their boundaries and extents would be better defined through future investigations (2009, 10).

Through the review, Long established that the pattern of Aboriginal occupation in the Precinct was strongly influenced by the drainage pattern, with outlying nodes based on significant landscape features, such as eruption points. The distribution of Aboriginal places showed that these commonly occur within 200 m of significant water sources, with an emphasis on elevated spurs and ridgelines overlooking water bodies. Scarred tree's and occurrences of stone artefacts were considered the most likely types of Aboriginal cultural heritage to be represented in the Precinct (2009, 22-23).

The findings of Long (2009) largely mirror those of Turnbull (2009) which highlight that area's adjacent to water sources have the greatest archaeological sensitivity. Long (2009) emphasised that elevated spurs and ridgelines overlooking water bodies as particular local landforms with increased archaeological potential, however such features do not appear to be represented in the Armstrong Creek West PSP, with Armstrong Creek only slightly incised into the surrounding plain in the study area.

North East Industrial Precinct (Terraculture 2009)

This report is not lodged at Aboriginal Affairs Victoria and the consultant was not able to access a copy through other sources.

ADDITIONAL HISTORICAL ARCHAEOLOGICAL INFORMATION

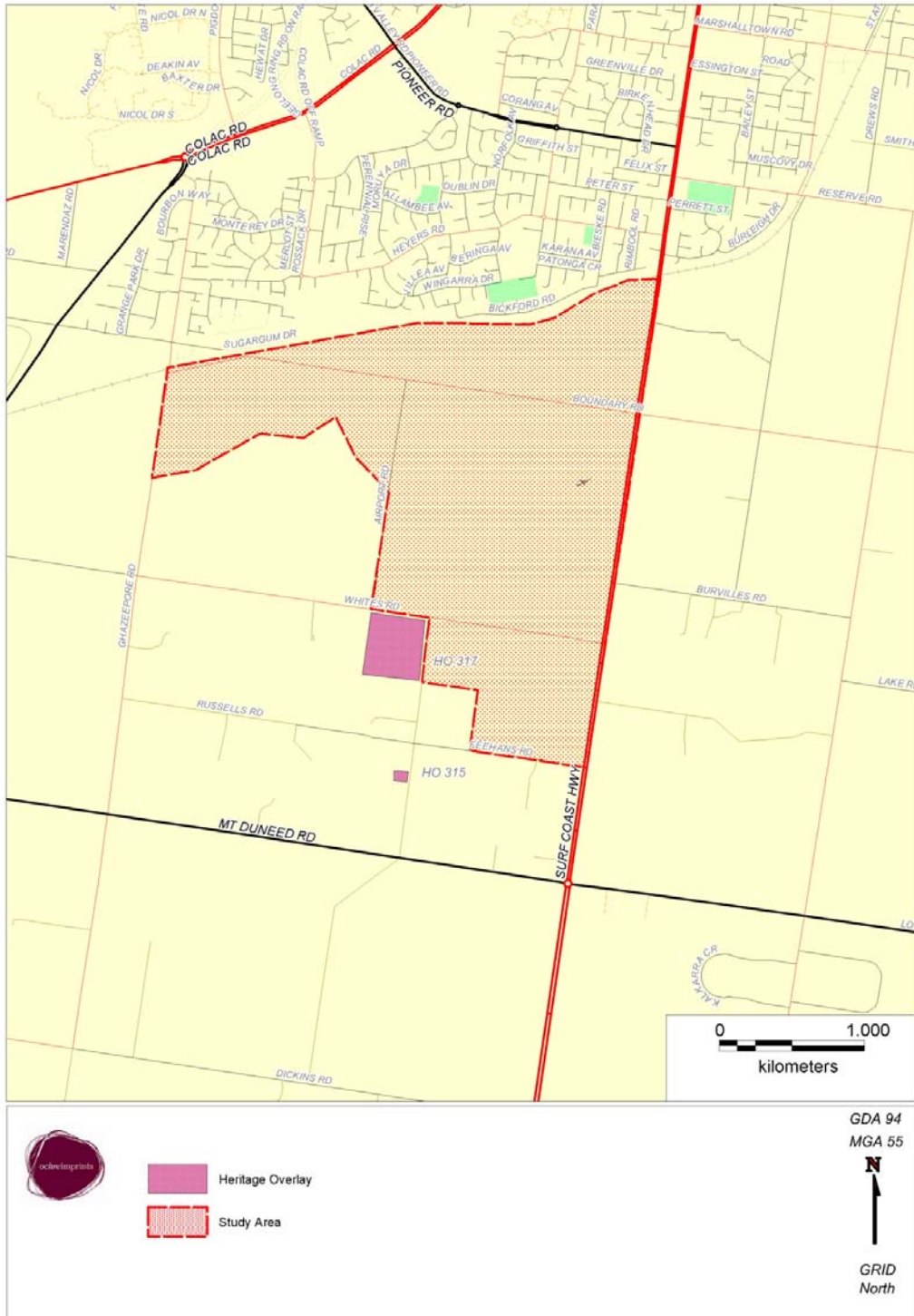
Heritage Overlays on Adjoining Land

The Greater Geelong Planning Scheme Heritage Overlay does not list any historical sites within the Armstrong Creek West PSP. The following two Heritage Overlay sites do occur in proximity to the PSP:

- HO317 'Hillside' - a residence at 30 Williams Road, Mt Dunned;

- HO315 - a cemetery at 110 Williams Road, Mt Duned.

The location of these HO sites is shown below.



CONSULTATION WITH WATHAURUNG ABORIGINAL CORPORATION

Wathaurung Aboriginal Corporation (WAC) have been appointed as a Registered Aboriginal Party (RAP) for the Precinct. RAPs have a legislated role in cultural heritage under the *Aboriginal Heritage Act 2006*. RAPs can chose to evaluate CHMPs, and as such engagement with WAC is an important component of Aboriginal cultural heritage assessment processes and a critical component of CHMP processes.

A meeting was held with Bonnie Fagan (WAC), Petra Schell (Ochre Imprints), Leah Wittingslow (Mesh Planning) and Tao Bourton (Villawood Properties P/L) on 6 September 2010. The purpose of the meeting was to:

- inform WAC of the Armstrong Creek West PSP and the associated Desktop Cultural Heritage Assessment;
- document any views that they raise about the management of Aboriginal cultural heritage;
- incorporate their views into recommendations regarding the future management of Aboriginal cultural heritage in the Armstrong Creek West PSP.

Bonnie Fagan made the following comments regarding the management of Aboriginal cultural heritage during the meeting and a subsequent phone call to Petra Schell on 4 November 2010:

- support recommendations provided in Turnbull (2009) and particularly emphasise the importance of protecting any scarred trees within the Precinct as so few have survived in the region. Stone artefact scatters should be retained in open space but how they are managed in open space will vary depending on if they occur in surface or subsurface deposits.
- strongly encourage CHMPs be undertaken for all stages of subdivision throughout the Precinct whether they are triggered by the *Aboriginal Heritage Act 2006* or not. This would result in better protection of Aboriginal cultural heritage in locations that have not been highlighted as having archaeological sensitivity to-date. CHMPs meet best practise requirements when it comes to the management of Aboriginal cultural heritage and therefore are the preferred management approach by WAC.
- mandatory CHMPs will likely be required throughout much of the Precinct. This is because as CHMPs are progressively undertaken they will result in the identification of as yet unrecorded Aboriginal places and where these occur on property boundaries they will trigger the need for CHMPs on neighbouring land.

- Aboriginal Affairs Victoria are not responsible for 'signing off' on desktop or cultural heritage assessments.
- CHMPs will require extensive consultation with WAC, at the cost of the Sponsor, and at a minimum will need to include:
 - a project inception meeting with the Sponsor and Cultural Heritage Advisor to discuss the CHMP process, research and field work method and outline WAC's expectations.
 - the participation of two WAC representatives in any field work.
 - a post-field work meeting to develop appropriate management recommendations.

REVIEW OF REPORT BY ABORIGINAL AFFAIRS VICTORIA

Turnbull (2009) and this addendum were provided to Matthew Phelan (Manager – Barwon Grampians Heritage Programs Aboriginal Affairs Victoria) for feedback on 24 September 2010. Matthew Phelan provided a response regarding the Aboriginal heritage components of these documents (for copy of full response see Attachment 1), which made the following points:

- a Cultural Heritage Permit may not be issued for an activity where a CHMP is required (see Turnbull 2009:62).
- there is little benefit in conducting surface survey in areas of high grass cover (low surface visibility) and such assessment would have contributed little to the desktop study undertaken by Turnbull (2009).
- the predictive model (zones of archaeological sensitivity, Turnbull 2009:42) developed from the desktop assessment needs to be tested as part of the assessment process for any CHMP undertaken within the precinct. Testing of the model would involve a subsurface testing program covering all three zones in order to test both positive and negative predictions.
- areas set aside for public open space in order to protect Aboriginal cultural heritage should not be subject to any significant ground disturbance as a result of proposed construction of infrastructure such as storm water or sewerage systems which is often designed for these types of areas. Such infrastructure will need to be constructed outside of such areas along Armstrong Creek. Consideration should be given to the implementation of mechanisms to provide long term protection to the Aboriginal heritage values of these areas. Such mechanisms could include Agreements with the RAP under Part 5 of the *Aboriginal Heritage Act 2006*.

These comments have been addressed in this Addendum through additional information provided in the 'Additional Aboriginal Archaeological Information' and 'Conclusion' sections.

CONCLUSIONS

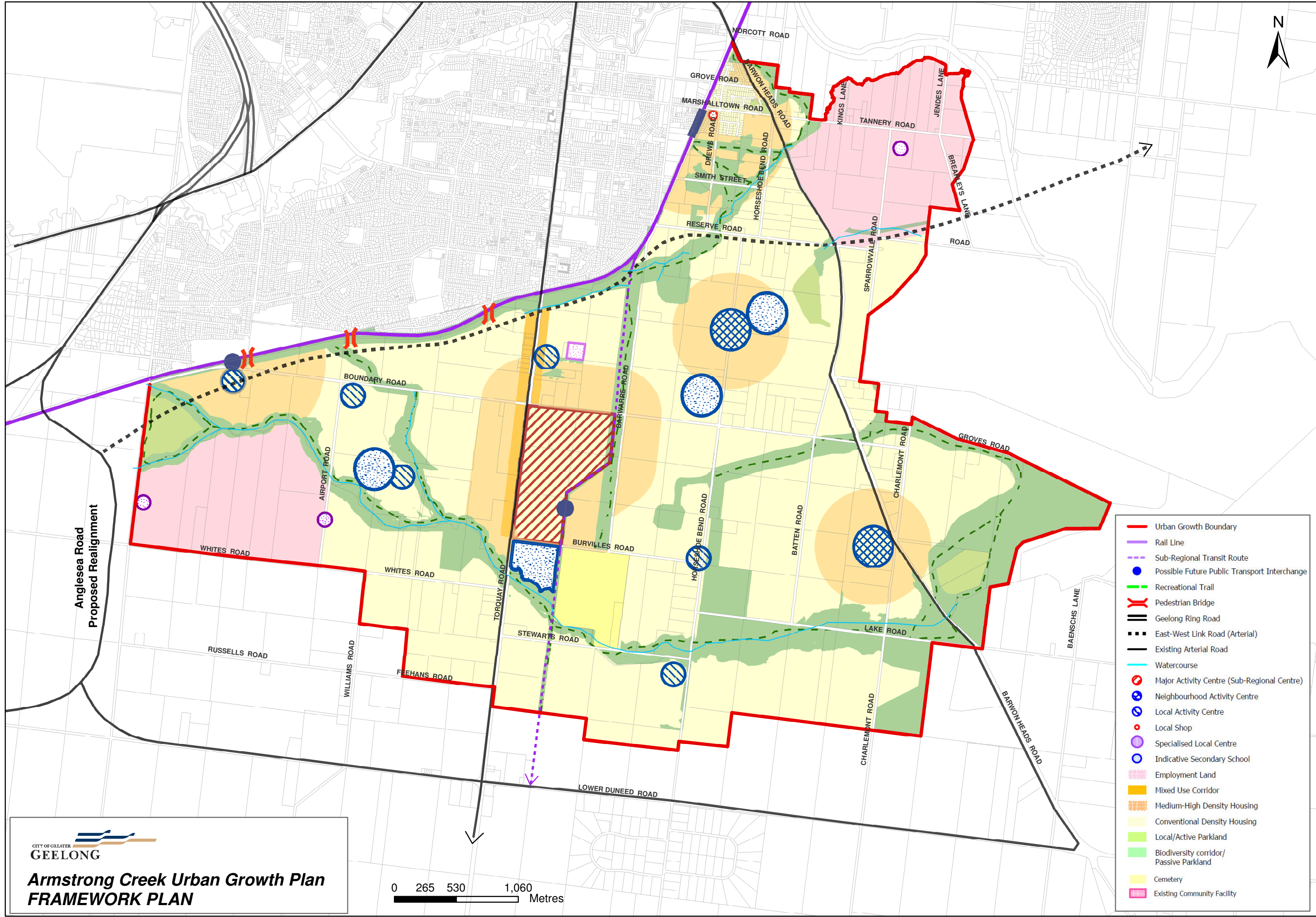
The recommendations provided by Turnbull (2009) regarding the management of Aboriginal and historical cultural heritage are generally still valid. However the following additional recommendations apply:

- additional field survey to inform this Desktop Cultural Heritage Assessment is not required, however future CHMPs in the Precinct will need to include a field survey component.
- consult with WAC throughout CHMP processes, with face-to-face meetings required at a minimum prior to and at the completion of field work.
- WAC recommend undertaking voluntary CHMPs for development where mandatory CHMPs are not triggered in the Precinct.
- future CHMPs and other Aboriginal cultural heritage assessments should seek to test and refine the predictive model proposed by Turnbull (2009), including testing all zones of archaeological potential.
- the protection of Aboriginal cultural heritage in open space needs to consider long term management and utilisation of that open space to ensure that Aboriginal cultural heritage will be protected from harm.

REFERENCES

- Long, A. 2009. Armstrong Creek East Precinct. Heritage Background Study and Implications for Development. Unpublished Report to the Armstrong Creek Development Corporation.
- Paynter, N. & D. Rhodes. 2006. Armstrong Creek Urban Growth Plan - Indigenous Cultural Heritage Technical Report. Unpublished Report for David Lock and Associates on Behalf of the City of Geelong.
- Terraculture. 2009. North East Industrial Precinct: Heritage Background Study. Uncited report.
- Turnbull, J. 2009. Armstrong Creek West Precinct: Desktop Cultural Heritage Assessment. Unpublished report to Villawood Properties P/L.
- Weaver, F. 1994. The Mount Duneed/Armstrong Creek Urban Development Study. Unpublished Report to Henshall Hansen Associates.

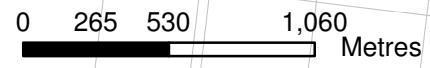
PLANS



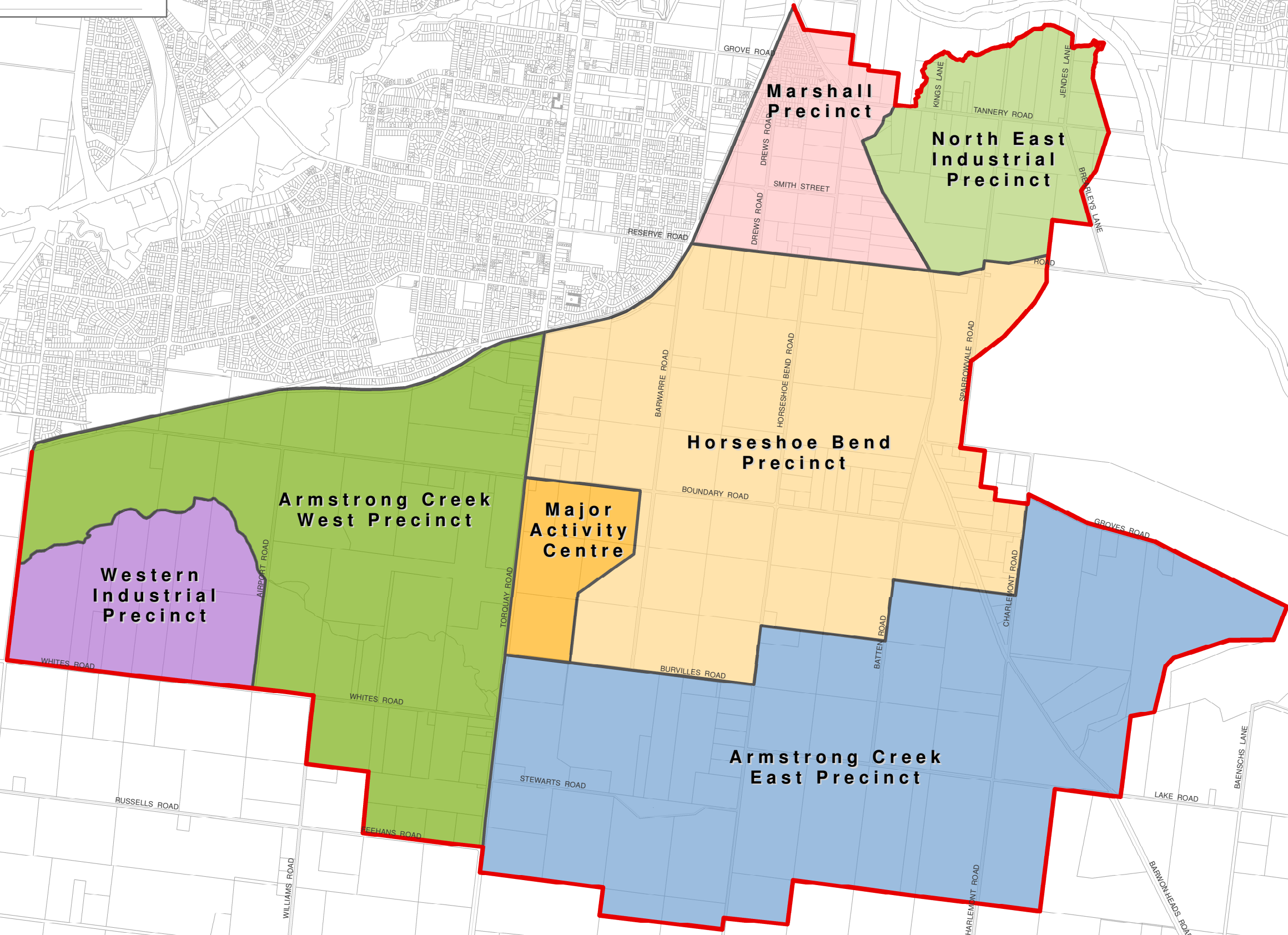
- Urban Growth Boundary
- Rail Line
- Sub-Regional Transit Route
- Possible Future Public Transport Interchange
- Recreational Trail
- Pedestrian Bridge
- Geelong Ring Road
- East-West Link Road (Arterial)
- Existing Arterial Road
- Watercourse
- Major Activity Centre (Sub-Regional Centre)
- Neighbourhood Activity Centre
- Local Activity Centre
- Local Shop
- Specialised Local Centre
- Indicative Secondary School
- Employment Land
- Mixed Use Corridor
- Medium-High Density Housing
- Conventional Density Housing
- Local/Active Parkland
- Biodiversity corridor/ Passive Parkland
- Cemetery
- Existing Community Facility



**Armstrong Creek Urban Growth Plan
FRAMEWORK PLAN**



URBAN GROWTH BOUNDARY
PRECINCT BOUNDARIES




CITY OF GREATER
GEELONG
Armstrong Creek Urban Growth Plan
PRECINCT PLAN

0 250 500 1,000
Metres

ATTACHMENT 1: FEEDBACK FROM MATTHEW PHELAN

Petra Schell

From: Matthew.Phelan@dpcd.vic.gov.au
Sent: Friday, 24 September 2010 2:49 PM
To: Petra Schell
Subject: Re: Armstrong Creek West PSP
Attachments: Armstrong Creek West CHA Final.pdf

Petra

Thanks for the opportunity to provide feedback on the Armstrong Creek West Precinct desktop cultural heritage assessment and the subsequent Addendum.

The Desktop assessment has covered all aspects that I would expect, has been thorough and has made sensible recommendations. I agree with the strategy taken and with the results. I have only a few points to add and would also take the opportunity to emphasise some of the points made in the Desktop and the Addendum document.

It should be made clear that a Cultural Heritage permit may not be issued for an activity where a cultural heritage management plan is required (seeTurnbull 2009:62).

There is little benefit in conducting surface survey in areas of high grass cover (low surface visibility) and such assessment would have contributed little to the Desktop study.

The predictive model (zones of archaeological sensitivity, Turnbull 2009:42) developed from the desktop assessment needs to be tested as part of the assessment process for any CHMP undertaken within the precinct. testing of the model would involve a subsurface testing program covering all three zones in order to test both positive and negative predictions.

It must be made clear that areas set aside for public open space in order to protect Aboriginal cultural heritage should not be subject to any significant ground disturbance as a result of proposed construction of infrastructure such as storm water or sewerage systems which is often designed for these types of areas. Such infrastructure will need to be constructed outside of such areas along Armstrong Creek. This restriction might be included as a detail in the precinct structure plan. Thought will need to be given to the implementation of mechanisms to provide long term protection to the Aboriginal heritage values of these areas. Such mechanisms could include Agreements with the RAP under Part 5 of the Aboriginal Heritage Act 2006.

I hope this assists

regards

Matthew Phelan | Manager - Barwon Grampians Heritage Programs Aboriginal Affairs Victoria
- Department of Planning and Community Development (DPCD)
111 Armstrong St, Ballarat Vic 3350

M: 0400 975 367 | Email: matthew.phelan@dpcd.vic.gov.au | T: 5327 2827 | F: