

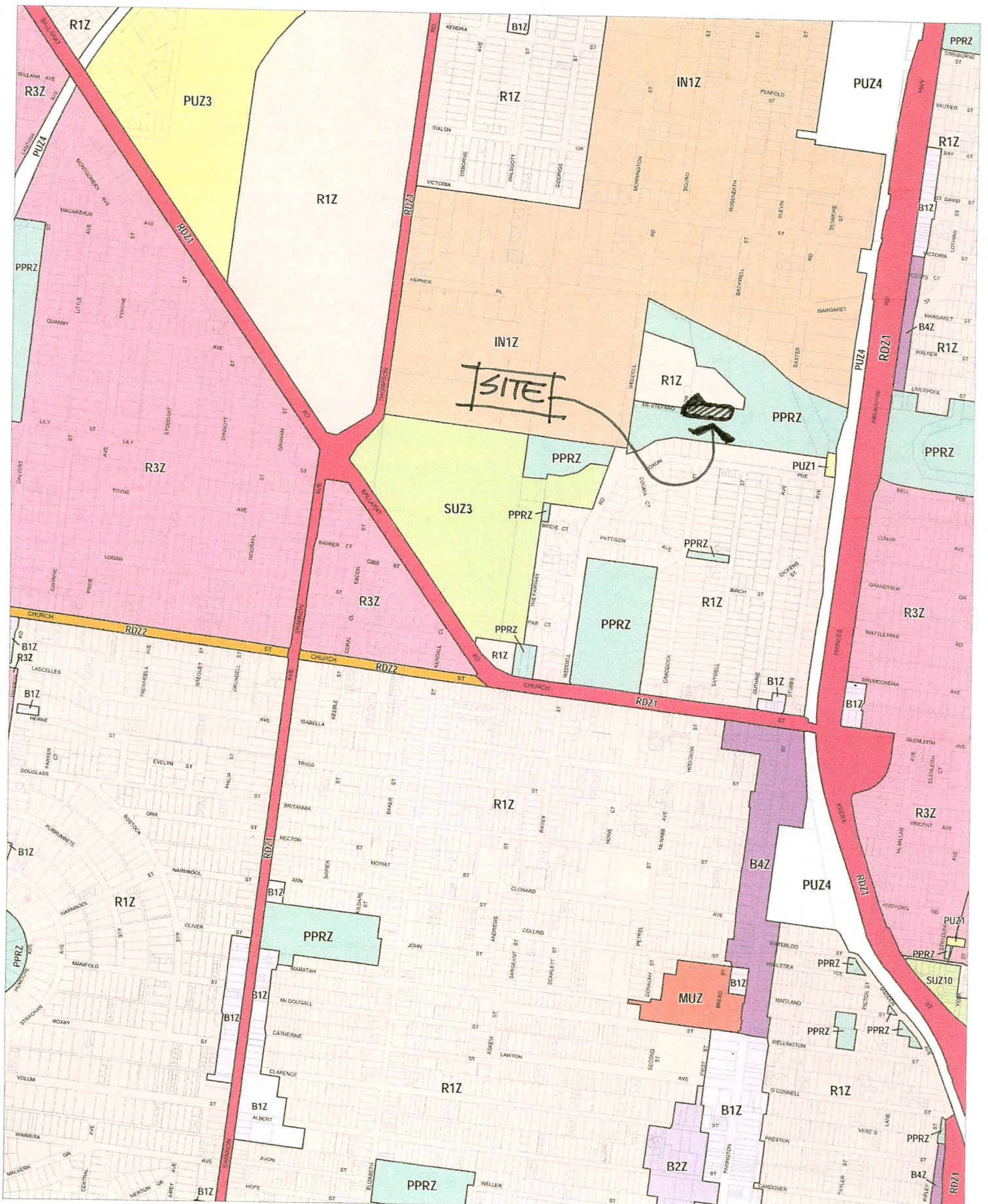
**Attachment 7 – Zone/Overlay Plans**

---

DOC: .....  
BOX: .....

CITY OF GREATER GEORGE  
STATUTORY PLANNING  
28 MAY 2013  
RECEIVED

# GREATER GEELONG PLANNING SCHEME - LOCAL PROVISION



This publication is copyright. No part may be reproduced by any process without the prior written permission of the Copyright Act. © City of Greater Geelong.

This map should be read in conjunction with additional Planning Overlay Maps (if applicable) as indicated on the INDEX TO MAPS.

- Business**
  - B1Z Business 1 Zone
  - B2Z Business 2 Zone
  - B3Z Business 3 Zone
  - B4Z Business 4 Zone
- Industrial**
  - I1Z Industrial 1 Zone
- Public Land**
  - PLR1Z Public Park and Recreation Zone
  - PLH1Z Public Use Zone - Health And Community
  - PLS1Z Public Use Zone - Service And Utility
- Public Use Zone - Transport**
  - PUZ1 Public Use Zone - Category 1
  - PUZ2 Public Use Zone - Category 2
- Residential**
  - R1Z Mixed Use Zone
  - R2Z Residential 1 Zone
  - R3Z Residential 3 Zone
- Special Purpose**
  - SUZ1 Special Use Zone - Schedule 10
  - SUZ2 Special Use Zone - Schedule 3

CITY OF GREATER GEELONG  
STATUTORY PLANNING

28 MAY 2013

RECEIVED

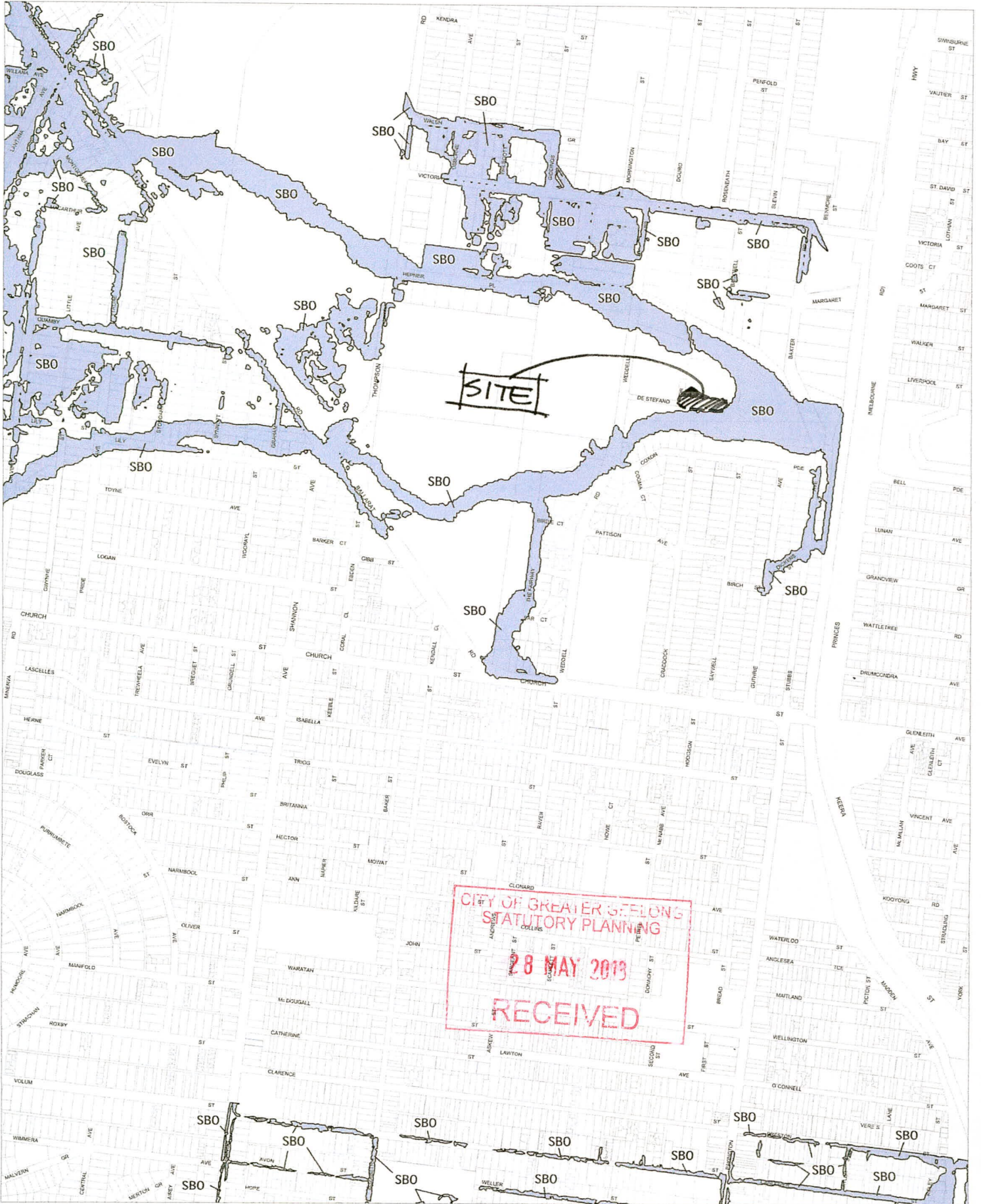
Printed: 13/10/2011



INDEX TO ADJOINING METRIC SERIES MAP

1	2	3	4
5	6	7	8
9	10	11	12
13	14	15	16
17	18	19	20
21	22	23	24
25	26	27	28
29	30	31	32

# GREATER GEELONG PLANNING SCHEME - LOCAL PROVISION



This publication is copyright. No part may be reproduced by any process except in accordance with the provisions of the Copyright Act 1968. State of Victoria

This map should be read in conjunction with additional Planning Overlay Maps (if applicable) as indicated on the INDEX TO MAPS.

**Overlays**  
Special Building Overlay



INDEX TO ADJOINING METRIC SERIES MAP

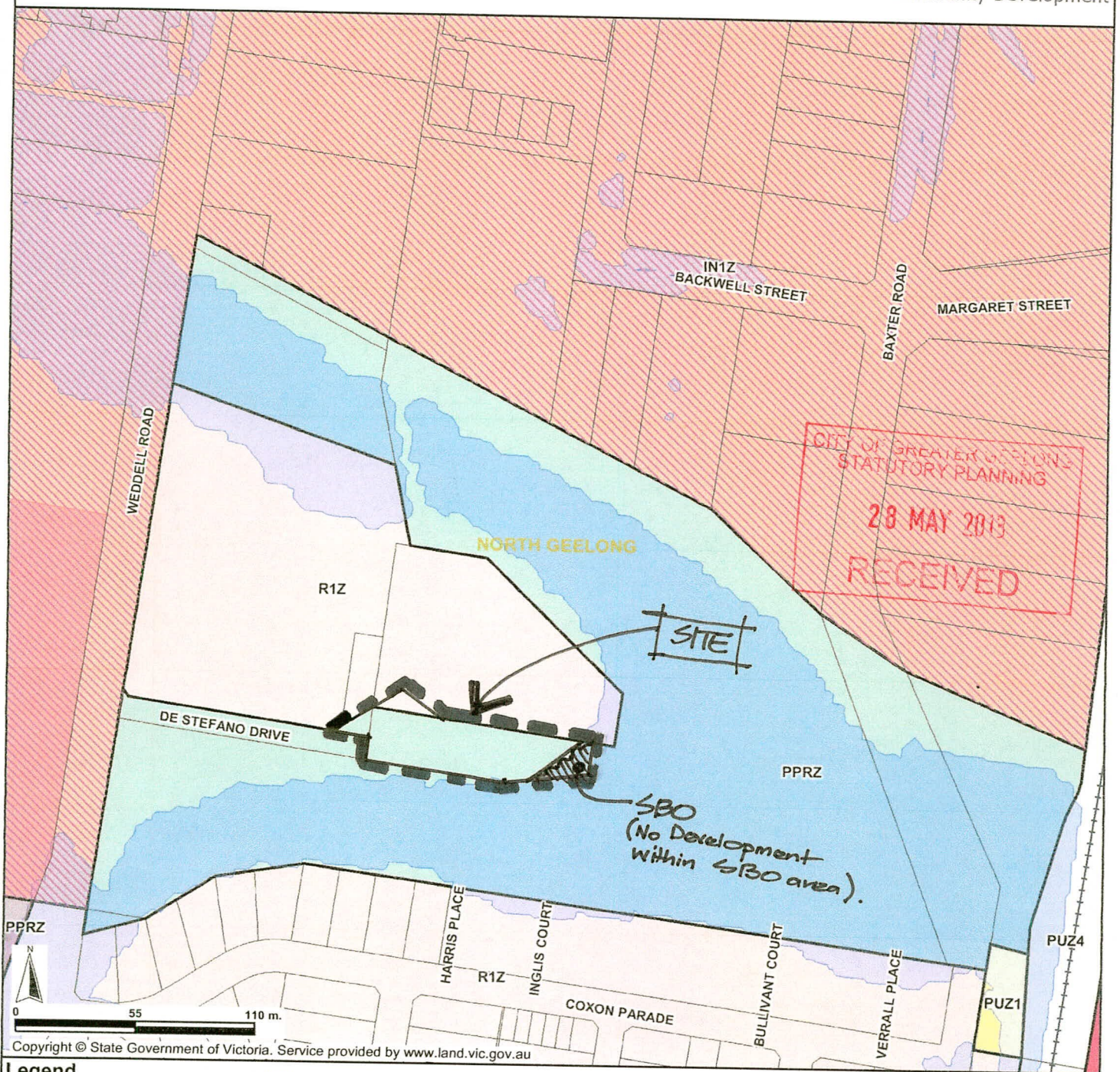
1	2	3	4
5	6	7	8
9	10	11	12
13	14	15	16
17	18	19	20
21	22	23	24
25	26	27	28
29	30	31	32

Printed: 18/11/2011

AMENDMENT C127 PT.2

# Planning Map

Department of  
Planning and  
Community Development



Copyright © State Government of Victoria. Service provided by [www.land.vic.gov.au](http://www.land.vic.gov.au)

## Legend

WARRNAMBOOL		ZONES		OVERLAYS	
Major Town	Major Road, Road	ACZ - Activity Centre	PUZ1 - Public Use - Service & Utility	Airport Environs	Melbourne Airport Environs 1
Road name	Railway, Tramway	B1Z - Business 1	PUZ2 - Public Use - Education	City Link Project	Melbourne Airport Environs 2
Property/Parcel, Selected	Address, Lot, Crown allotment	B2Z - Business 2	PUZ3 - Public Use - Health Community	Development Contributions Plan	Neighbourhood Character
25 2 1C	River, Stream, Coastline	B3Z - Business 3	PUZ4 - Public Use - Transport	Design & Development Part	Public Acquisition
Waterbody	Locality	B4Z - Business 4	PUZ5 - Public Use - Cemetery/Crematorium	Development Plan	Restructure
Locality Name	Local Government Area	B5Z - Business 5	PUZ6 - Public Use - Local Government	Environmental Audit	Road Closure
Local Government Name	Local Government Name	CA - Commonwealth Land (not in scheme)	PUZ7 - Public Use - Other Public Use	Erosion Management	Special Building
Urban Growth Boundary (UGB)	Area outside the UGB	CDZ - Comprehensive Development	R1Z - Residential 1	Environmental Significance	Significant Landscape
Investigation Area	Land added to UGB since 2005	DZ - Dockland	R2Z - Residential 2	Floodway	Salinity Management
Boundary of Searched Suburb		ERZ - Environmental Rural	R3Z - Residential 3	Heritage	State Resource
		FZ - Farming	RAZ - Rural Activity	Incorporated Plan	Vegetation Protection
		GWAZ - Green Wedge A	RCZ - Rural Conservation	Land Subject to Inundation	Wildfire Management
		GWZ - Green Wedge	RDZ1 - Road - Category 1		
		IH1Z - Industrial 1	RDZ2 - Road - Category 2		
		IH2Z - Industrial 2	RLZ - Rural Living		
		IH3Z - Industrial 3	RUZ - Rural		
		LDRZ - Low Density Residential	SUZ - Special Use		
		MUZ - Mixed Use	TZ - Township		
		PCRZ - Public Conservation & Resource	UFZ - Urban Floodway		
		PDZ - Priority Development	UGZ - Urban Growth		
		PPRZ - Public Park & Recreation			

Disclaimer: This map is a snapshot generated from Victorian Government data. This material may be of assistance to you but the State of Victoria does not guarantee that the publication is without flaw of any kind or is wholly appropriate for your particular purposes and therefore disclaims all liability for error, loss or damage which may arise from reliance upon it. All persons accessing this information should make appropriate enquiries to assess the currency of data.

Map Centre - Melways 441 K9  
Map Scale 1:2,605  
January 9, 2013 4:00:14 PM

