

City of Greater Geelong**PLACE NAME: Osborne Park - bluestone pillar and cast/wrought iron gates**

Place No.

ADDRESS: 241 Melbourne Road and 1-41 Swinburne Street, North Geelong

Assessment Date: August 2016 (revised Panel hearing Am C341 December 2016)

Historic Themes:

Theme 7.5: Protecting Victoria's heritage

Condition: Good**Integrity:** High**Photograph Date:** August 2016/December 2015Rear view of Osborne Park gates, North Geelong
August 2016**CURRENT HERITAGE STATUS ON STATUTORY REGISTERS****Victorian Heritage Register:** No**Victorian Heritage Inventory:** No**Local Planning Scheme:** No**CURRENT HERITAGE STATUS ON OTHER REGISTERS:****National Trust (Victoria) Register:** No**RECOMMENDED LEVEL OF SIGNIFICANCE:****Local Significance****RECOMMENDATIONS:**Recommended for inclusion in the Victorian Heritage Register: **Yes**Recommended for inclusion in the Victorian Heritage Inventory: **Yes**Recommended for inclusion as a Heritage Overlay in the Planning Scheme: **Yes****Schedule to the Heritage Overlay**External Paint Controls Should Apply? **Yes – Osborne Park bluestone pillars and cast/wrought iron gates**Internal Alteration Controls Should Apply? **No**Tree Controls Should Apply? **No**Fences &/or Outbuildings of Note? **Yes - Bluestone pillar and cast/wrought iron gates that forms part of and are historically connected with Osborne House**Prohibited Uses May be Permitted? **No**Incorporated Document **No****Other Recommendations**

Nil

STATEMENT OF SIGNIFICANCE:**What is Significant?**

The bluestone pillar and cast/wrought iron gates is located at 241 Melbourne Road and 1-41 Swinburne Street, North Geelong (located near the north –east corner of Swinburne Street and Melbourne Road).

City of Greater Geelong

PLACE NAME: Osborne Park - bluestone pillar and cast/wrought iron gates

Place No.

ADDRESS: 241 Melbourne Road and 1-41 Swinburne Street, North Geelong

Assessment Date: August 2016 (revised Panel hearing Am C341 December 2016)

It has not been established whether the gateposts were built by Robert Muirhead a pastoralist, then the owner of Osborne House in 1857/58 or whether they were added during the 1890s, the gates are predominantly intact even though it has been relocated slightly from its original position.

The gates has significance as the (Melbourne Road) gates were originally connected with Osborne House located at 51 Swinburne Street, North Geelong fronting Corio Bay.

How is it significant?

The Osborne Park gates are aesthetically and historically significant at a **LOCAL** level.

Why is it significant?

The Osborne Park gates are **historically** significant as an early and significant entrance to Osborne House. As part of a scheme to widen the Melbourne Road, the bluestone gates to Osborne House were relocated approximately 33ft (10 metres) north-east from their original position by the Corio Shire Council in 1928-29 and the driveway angled at the western end to access the offset entry gates. The gates stand at a short distance north of the Vietnam memorial on the frontage to Melbourne Road. It has not been established whether the gateposts were built by the Muirheads, or whether they were added during the 1890s, when the Osborne House estate reached its largest extent under the ownership of Philip Russell. However, the design and construction indicates that they were built in the 19th century¹.

The Osborne Park gates are **aesthetically** significant as they comprise six massive square pillars constructed of large rusticated bluestone blocks. The central pillars stand at 2.5 metres height and the side pillars at 2.3 metres with a pair of cast/wrought iron gates, with some cast iron details, in the centrally located carriageway entrance. Two pedestrian gates flank the carriage gates on either side. These in turn are flanked by a curving wall surmounted by wrought iron picket spear-capped balustrade to the end pillars.

The gate fronts directly onto Melbourne Road and are located approx 20 metres north from Swinburne Street. The gate is presently non-functional.

Heritage Overlay Map

The heritage overlay includes the Osborne Park gates fronting Melbourne Road that comprises bluestone blocks and cast/wrought iron gates.

The proposed heritage overlay is shown as follows:

Figure 1: Source of base Map, City of Greater Geelong 2016

¹ Osborne House and Stables North Geelong, Victoria Conservation Management Plan prepared by Lovell Chen for the City of Greater Geelong, September 2009.

City of Greater Geelong

PLACE NAME: Osborne Park - bluestone pillar and cast/wrought iron gates

Place No.

ADDRESS: 241 Melbourne Road and 1-41 Swinburne Street, North Geelong

Assessment Date: August 2016 (revised Panel hearing Am C341 December 2016)

DESCRIPTION:

The gates form part of the original entrance to Osborne House c1858 from Melbourne Road, located some 370 metres west from the Osborne House complex.

The two plaques which were fixed either side of the gates and inscribed with *Osborne* and *Park* respectively are both missing.

The gates are maintained by the City of Greater Geelong.

The Melbourne Road frontage to the gates is planted with *Lomandra longifolia*.

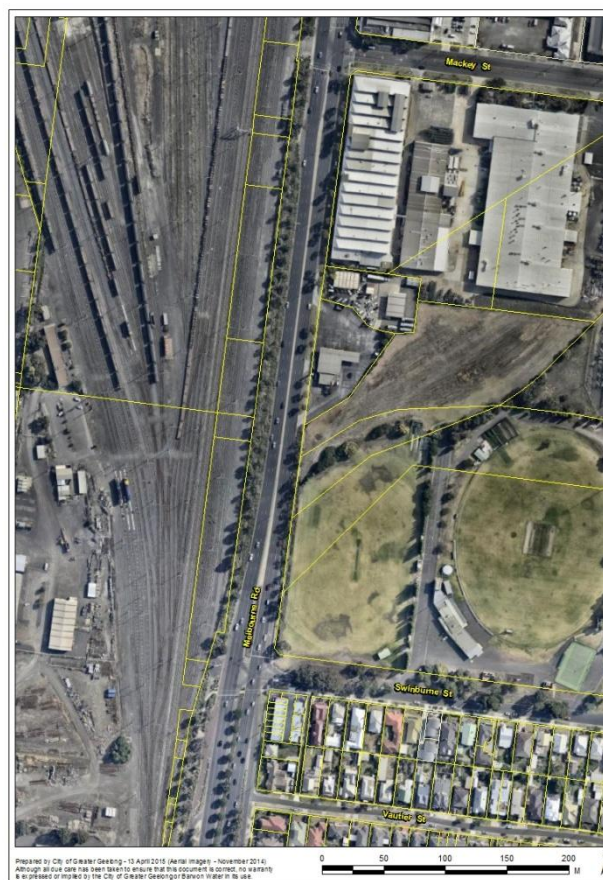


Figure 2. aerial map of Melbourne Road between Mackay Street and Swinburne Street, supplied by the City of Greater Geelong

City of Greater Geelong

PLACE NAME: Osborne Park - bluestone pillar and cast/wrought iron gates

Place No.

ADDRESS: 241 Melbourne Road and 1-41 Swinburne Street, North Geelong

Assessment Date: August 2016 (revised Panel hearing Am C341 December 2016)



Photo 1: Osborne Park gates viewed from Melbourne Road, North Geelong, August 2016



Photo 2: rear view looking west of the Osborne Park gates, North Geelong, August 2016



Photo 3: view looking south/west, Osborne Park gates, August 2016

City of Greater Geelong

PLACE NAME: Osborne Park - bluestone pillar and cast/wrought iron gates

Place No.

ADDRESS: 241 Melbourne Road and 1-41 Swinburne Street, North Geelong

Assessment Date: August 2016 (revised Panel hearing Am C341 December 2016)



Photo 4: Osborne Park gates looking south from Melbourne Road, August 2016

HISTORY - OSBORNE PARK GATES

The bluestone and cast/wrought iron gates are located adjacent to the Geelong and District Vietnam Veteran's Memorial (comprising memorial wall and commemorative pathway) and the tree lined Avenue of Honour comprising approx 146 ironbark trees.

Osborne House a two-storey mansion was built in basalt stone for pastoralist Robert Muirhead in 1857-58. Muirhead also constructed the brick stables and coach house complex to the north of the main house, which encloses a central courtyard².

It has not been established whether the gateposts were built by the Muirheads, or whether they were added during the 1890s, when the Osborne House estate reached its largest extent under the ownership of Philip Russell³. The design and construction suggests they were built in the 19th century.

The long straight asphalted footpath follows the general alignment of what is believed to be the original driveway from the bluestone gateposts at Melbourne Road to Osborne House. The early driveway was of gravel construction and for much of its length was tree lined.

² Lovell Chen Report page ix

³ Lovell Chen Report page 64

City of Greater Geelong

PLACE NAME: Osborne Park - bluestone pillar and cast/wrought iron gates

Place No.

ADDRESS: 241 Melbourne Road and 1-41 Swinburne Street, North Geelong

Assessment Date: August 2016 (revised Panel hearing Am C341 December 2016)

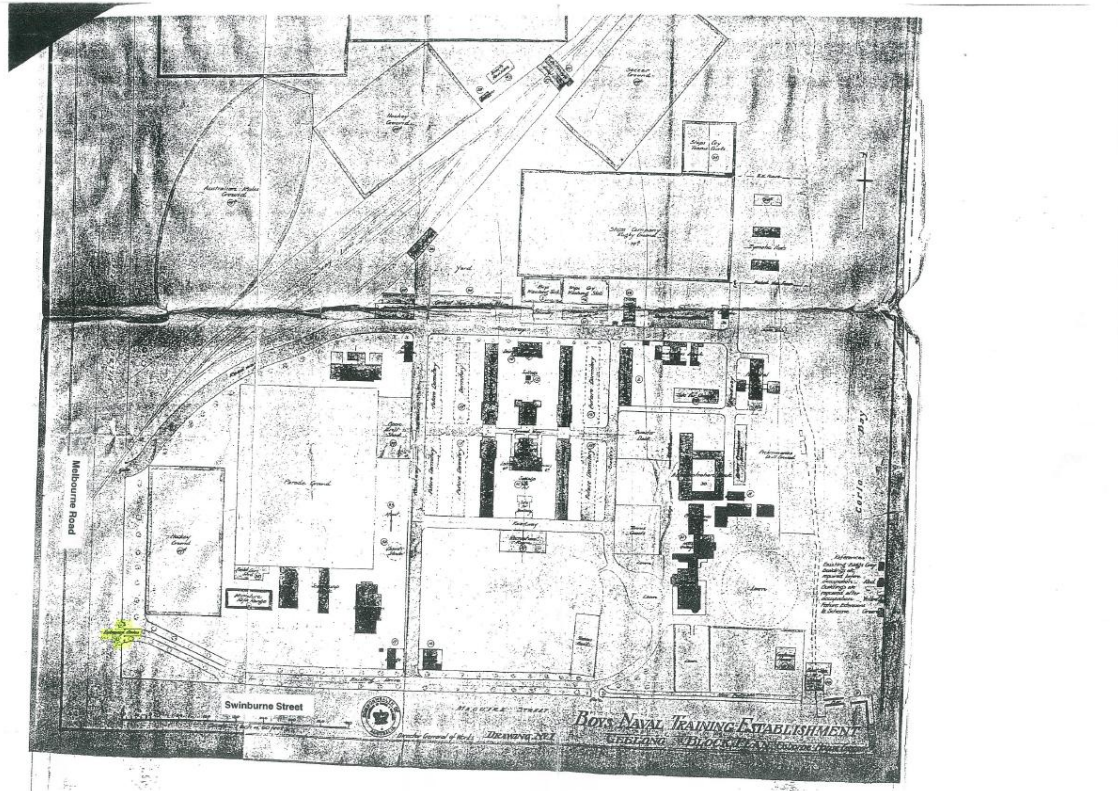


Figure 3. Commonwealth of Australia, Director General of Works, map Drawing No 1 date 1920's? showing the Osborne House entrance gates



Photo 5: Osborne Park bluestone and cast/wrought iron gates at Osborne Park, North Geelong Dec 2015

In 1928-29 as part of a scheme to widen the Melbourne Road, the bluestone gates to Osborne House were relocated approximately 33ft (10 metres) north-east from their original position by the Corio

City of Greater Geelong

PLACE NAME: Osborne Park - bluestone pillar and cast/wrought iron gates

Place No.

ADDRESS: 241 Melbourne Road and 1-41 Swinburne Street, North Geelong

Assessment Date: August 2016 (revised Panel hearing Am C341 December 2016)

Shire Council. While they are not in their original position on axis at the end of the former drive alignment, they remain close to this on the site of their 1927-1928 relocation.

OTHER GATE STRUCTURES IN THE CITY OF GREATER GEELONG

Other early gates that still form part of the original homestead include the bluestone block gate entrance at Kardinia International College (formerly Morongo) at Ballarat Road, Bell Post Hill. These bluestone gates were moved in 2004 by a short distance in a northerly direction as part of the scheme to widen Ballarat Road.



Photo 6: Morongo bluestone gates Midland Highway Bell Park Geelong Dec 2015

The decorative and elaborate designed wrought iron gates at Geelong Grammar – Corio were previously located at Lunan House, Lunan Avenue, Drumcondra. These gates now front onto Foreshore Road, Corio.



Photo 7: Lunan House wrought iron gates now located at Geelong Grammar Corio campus, Corio Dec 2015

Bibliography

1) Osborne House and Stables North Geelong, Victoria Conservation Management Plan prepared by Lovell Chen for the City of Greater Geelong, September 2009

City of Greater Geelong

PLACE NAME: Osborne Park - bluestone pillar and cast/wrought iron gates

Place No.

ADDRESS: 241 Melbourne Road and 1-41 Swinburne Street, North Geelong

Assessment Date: August 2016 (revised Panel hearing Am C341 December 2016)

2) Commonwealth of Australia, Director General of Works, map Drawing No 1 date 1920's?