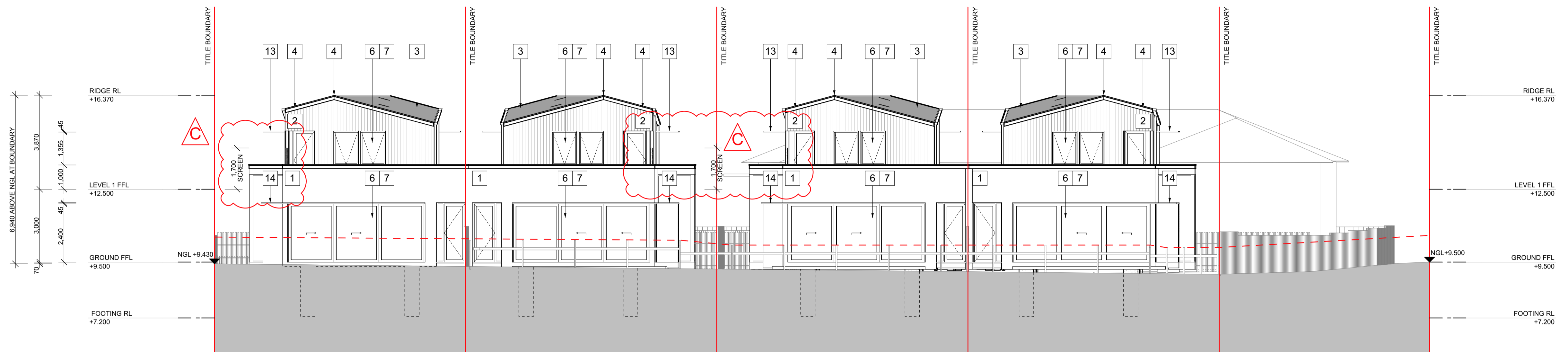
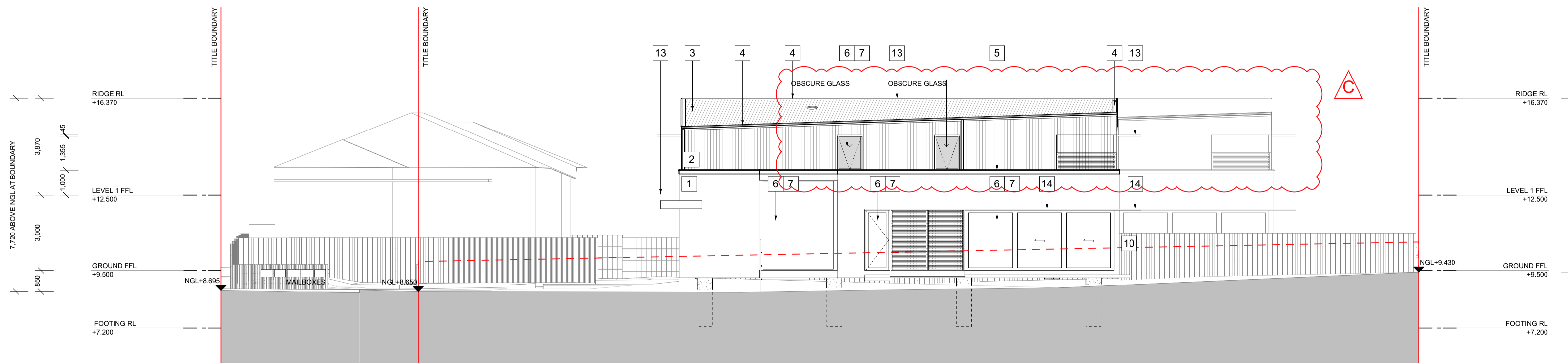


MATERIALS & FINISHES SCHEDULE

- 1 CONCRETE RENDER
- 2 METAL SHEET WALL CLADDING - COLORBOND FINISH
- 3 METAL SHEET ROOFING MATERIAL - COLORBOND FINISH
- 4 ROOF ACCESSORIES TYPE 01 - COLORBOND FINISH
- 5 ROOF ACCESSORIES TYPE 02 - ALUMINIUM / COLORBOND FINISH
- 6 TIMBER WINDOW + DOOR FRAMES - NATURAL STAIN FINISH
- 7 GLAZING - CLEAR LOW-E GLASS
- 8 TIMBER BATTEN CLADDING
- 9 TIMBER DECKING - NATURAL STAIN FINISH
- 10 TIMBER PAILING FENCE - NATURAL STAIN FINISH
- 11 EXPOSED AGGREGATE
- 12 EXPOSED CONCRETE COLUMNS
- 13 FIBRE CEMENT SHEET CLADDING - PAINT FINISH
- 14 FIBRE CEMENT SHEET CLADDING - EXPOSED / PAINT FINISH



NORTH SITE ELEVATION



EAST SITE ELEVATION

PLANNING - NOT FOR CONSTRUCTION

REV.	DATE	REVISION	INITIAL
-	27.05.16	REVISED ISSUE TO PLANNING CONSULTANT	RC
A	02.06.16	PRELIMINARY TOWN PLANNING APPLICATION	RC
B	29.07.16	AMENDED TOWN PLANNING APPLICATION	RC

REV.	DATE	REVISION	INITIAL
C	02.12.16	COUNCIL REQUESTED AMENDMENTS	RC

SCALE
1:100@A1
1:200@A3



MARTUCCI DEVELOPMENT
42-44 PONDS DRIVE
LARA
VIC 3212

SITE ELEVATIONS 01
TOWN PLANNING

DRAWN
RC
CHECKED
DP

PROJECT NUMBER
1602G
DATE
MAR '16

TP2.01
REVISION
C



Melbourne
69 Station Street
Melburn VIC 3144
T 03 9509 5444
F 03 9509 4499
E info@darylpelchenarchitects.com
W darylpelchenarchitects.com

Geelong
276 Latrobe Terrace
Newtown VIC 3220
T 03 5273 2750
F 03 5229 1825
© 2008