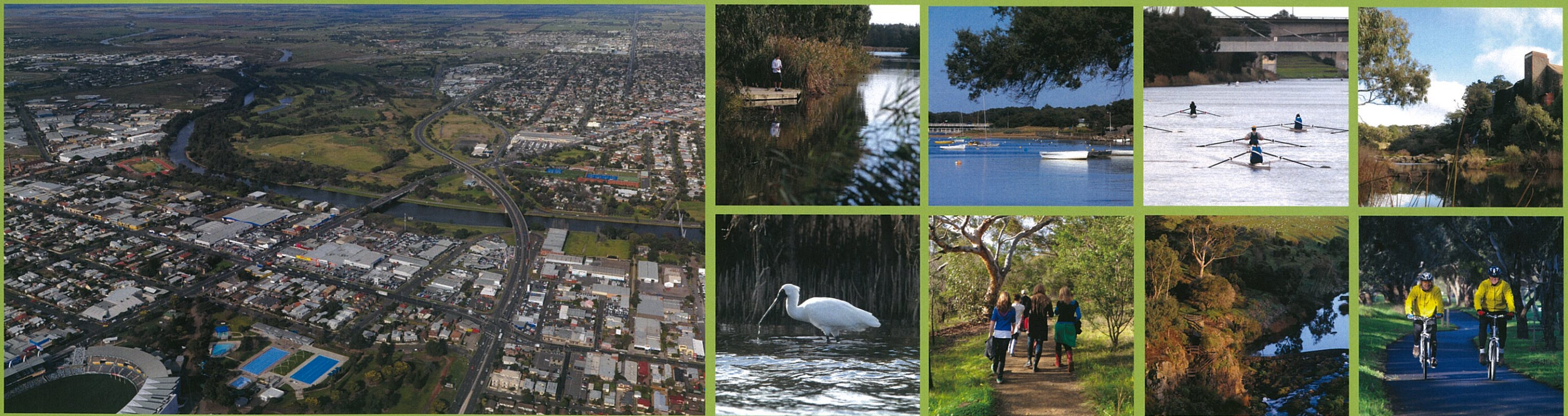


CONFIDENTIAL

BarwonRiver  
PARKLANDS

BARWON RIVER PARKLANDS STRATEGY



# A PROSPEROUS REGION

## Regional Context

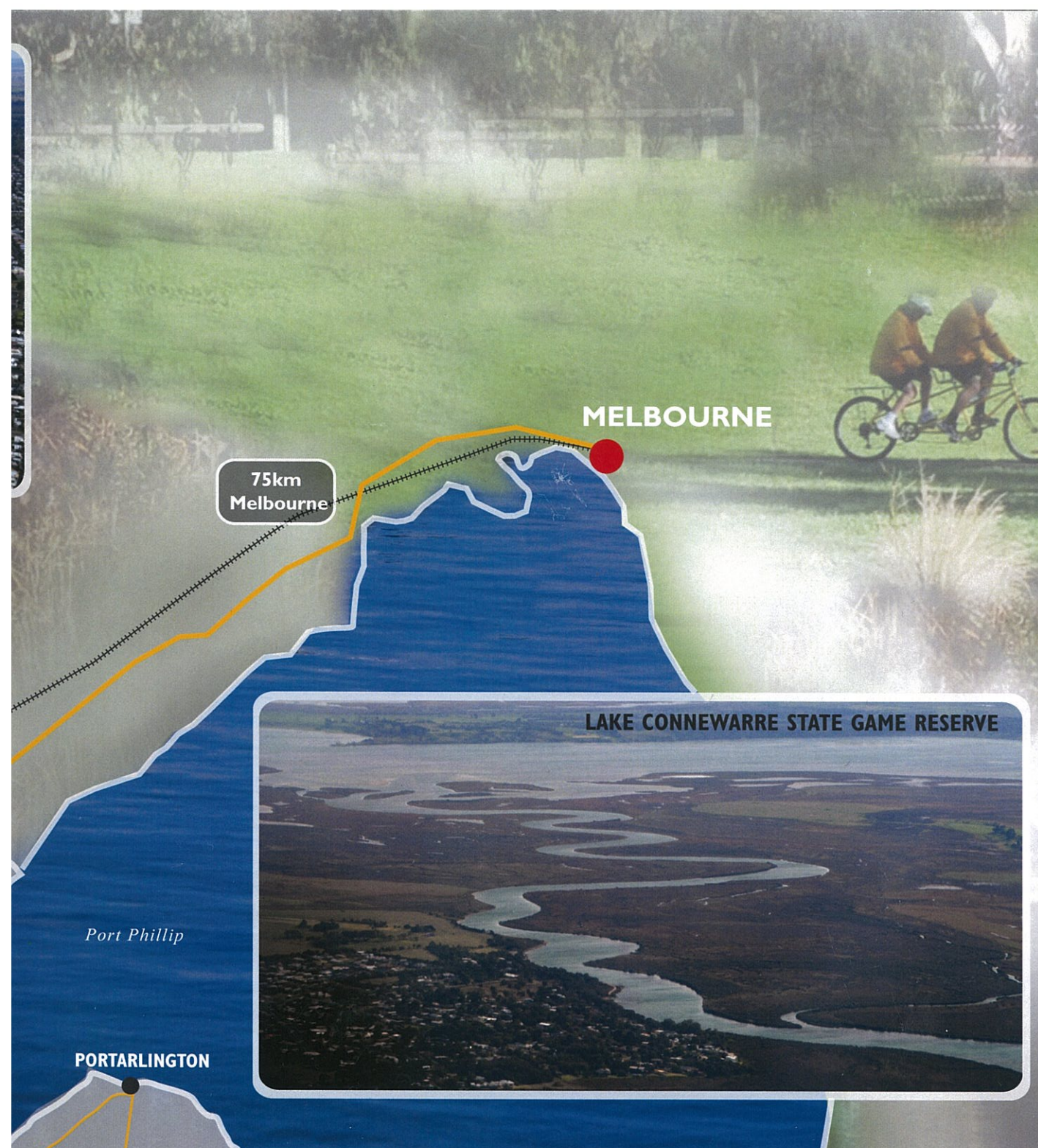
The City of Greater Geelong is Victoria's largest regional centre with a population of over 217,000 people. The region includes country, coastal and suburban areas where the proximity to Melbourne, its liveability and affordability are driving rapid population growth, expected to exceed 290,000 within the next 20 years.

The Barwon River Parklands extend over 36 km linking the more established historic areas of central Geelong through rural farming areas of the picturesque Bellarine Peninsula to the thriving coastal tourism areas at Barwon Heads. The Parklands exemplify the benefits of nature entwined within a city providing home to rare and threatened wildlife and regionally significant biodiversity while supporting the open space, recreation, accessible natural assets and community networks which have long enriched the lives and health of the people of the Geelong region.

The landscape is subject to change shaped by the social, environmental and economic context in which we live. Our population is increasing and diversifying, climate change is requiring adaptation and mitigation measures, lifestyle and recreational choices are changing and our sedentary lives are contributing to new health priorities. Urban ecology is increasingly impacted as the built form modifies the environment. The Parklands provide a wonderful landscape to explore these opportunities, work together and secure the long term vision and the *Healthy Parks, Healthy People* provides the overarching philosophy for management by which communities conserve and care for the natural environment in parks, and individual and social health is improved by contact with nature.

The role of this plan is to translate the philosophy into strategic directions for the linear open space and chain of parklands along the Barwon River between Geelong and Barwon Heads and define goals and actions.

The key goals of the Barwon River Parklands are consistent with the G21 Regional Alliance Environment Pillars goals. The G21 Environment Pillar aims to protect and enhance our



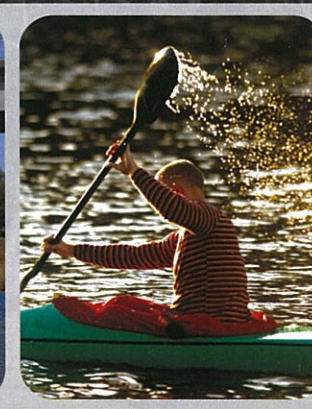
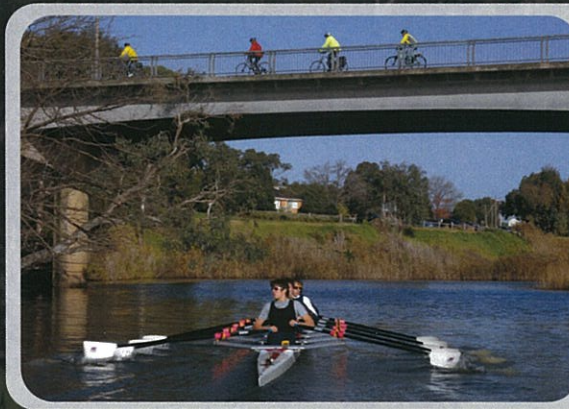
# A BEAUTIFUL ACTIVE PARKLAND

*Existing Open Spaces and Recreation*

A long history of strategic planning has provided Geelong with an open space network of parks, trails and conservation areas along the Barwon River. This legacy is the outcome of a vision planned and implemented over more than a century, now embedded in the landscape and character of the city, and the values of its community.

## BARWON RIVER TRAILS

There are over 26km of walking and cycling paths along both sides of the Barwon River developed over many years. Existing pedestrian and road bridges combine with the landscape character to form a series of connected walking/cycling loops of between 4-5km in total length. These popular loops provide a walk of approximately 1 hour, a easy jog of around 30 minutes and cycle journey of 10 - 15 minutes. The diversity of character and visitor experience available within the loops both as part of the linear trail and established parkland visitor nodes is a key feature of the Barwon River Parklands and there has recently been a new criterion track established at Belmont Common.



## RECREATION FACILITIES

There is a wide range of facilities available in the Parklands including public golf courses, numerous fishing and viewing platforms, playgrounds and picnic areas.

The rowing mile between Shannon Avenue and Moorabool Street has been used for rowing since the late 1800s. The Barwon River also provides for canoeing, kayaking, outrigger canoe and dragon boat racing. Wind and kite surfers occasionally launch from Brinsmead Lane, McCorkell Reserve, and onto Lake Connewarre, subject to water depths.

Water skiing is an established use on the River with several clubs using the River at Belmont Common and the Rowing Mile on weekends. The Geelong Water Ski Club uses the River from downstream of the Ovoid Sewer Aqueduct to Coppards Road.

## FISHING AND HUNTING

Fishing is popular all along the Barwon River and there is access for recreational fishing craft and other water craft launched from boat ramps at Barwon Heads and Ocean Grove. The Lake Connewarre State Game Reserve is a gazetted under the Victorian Wildlife Act 1975, allowing hunting activity according to seasonal conditions and at specified times throughout the year.



**Barwon River**  
PARKLANDS

# MANAGEMENT RESPONSIBILITIES

## Land Management

In November 2006 the State Government of Victoria made a commitment to establish a continuous chain of parks along the Barwon River, from the Ring Road in Geelong to the sea at Barwon Heads, by linking existing parks and public land. The various land and water managers have been co-operatively managing the area through the Barwon River Parklands Steering Committee to provide integrated quality services and management of environmental values, recreational assets and community programs. Key objectives include:

- Protection of the natural environmental and cultural values of the Parklands and the Barwon River
- Accessible opportunities for the recreational use and enjoyment of the Parklands
- The active participation of local communities in the management, protection and operation of the Parklands to improve community well-being
- Integration with regional planning and landscape management policies and initiatives.

### MANAGEMENT AND PLANNING



**Parks Victoria** is the lead agency in development of the Barwon River Parklands and is responsible for the Lake Connewarre State Game Reserve (which includes Reedy Lake). They manage the Barwon Bluff Marine Sanctuary and assist recreational waterway management downstream of the lower Breakwater to Sheepwash Road.



**City of Greater Geelong** is responsible for management of all open space reserves along the Barwon and Moorabool Rivers upstream of Queens Park Bridge to the Geelong Ring Road. They also manage Balyang Sanctuary, King Lloyd Recreation Reserve, Barwon Valley Park, Landy Field, South Barwon Reserve, Barwon Heads Village Park, Ash Road, McCorkell Reserve and the majority of Belmont Common.



**Corangamite Catchment Management Authority (CMA)**, as the regional caretaker of river health, is responsible for the implementation of State Government priorities for the management, protection and enhancement of high value river, wetland and estuarine assets in the Barwon and Moorabool Basins, as identified under the Corangamite River Health Strategy (RHS). This includes management of environmental entitlements as manager of the Environmental Water Reserve (EWR). The Corangamite CMA is also responsible for the bed and banks of the Barwon River between Orana Road and the lower breakwater. It is also responsible for most of the open space river corridor directly adjoining the river downstream of the Queens Park bridge, including Stan Lewis Walk, Newtown Park, Rowing Mile, Richardson Reserve, Belmont Common Boat Ramp, Wal Whiteside Walk, as well as leased Crown land reserves along the river downstream of Breakwater Road to Reedy Lake and the lower breakwater.



**BarwonWater** own and manage McIntyre Footbridge and Ovoid Sewer Aqueduct. They directly manage reserves surrounding sewerage and water supply infrastructure at these locations and other sewer pumping stations through the Parklands.



**Barwon Coast Committee of Management** act as a Department of Sustainability and Environment committee of management for coastal land including the Ocean Grove Spit, Barwon Heads Caravan Park and coastal land along 13th Beach Road. Responsible for the management of the Port of Barwon Heads downstream of Sheepwash Road to the mouth of Barwon River.



The **Department of Sustainability and Environment** leads the Victorian Government's efforts to sustainably manage water resources and catchments, climate change, bushfires, parks and other public land, forests, biodiversity and ecosystem conservation, as the owner of Crown Land. DSE is directly responsible for the management of the Mamookvale site off Shannon Ave.

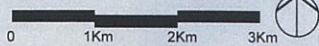
The **Department of Planning and Community Development** is responsible for land-use planning and environment assessment in Victoria. This includes managing the regulatory framework and providing advice on planning policy, urban design and strategic planning, as well as information on land development and forecasting.



**Registered Aboriginal Party** representing the Traditional Owners of the areas including those covered by the Barwon River Parklands. The Wathaurung Corp represents Wada wurrung people who are members of the Kulin nation from the coastal country in the west of Port Phillip Bay. Members of Wathaurung Corp have continued to live on country and have an ongoing relationship with the land of the Wada wurrung people.



**Barwon River**  
PARKLANDS



# ENHANCE OUR NATURAL LANDSCAPE AND RIVER HEALTH

## Environment Protection

The Barwon River Parklands are the lungs and lifeblood of Geelong and form some of the most significant natural assets in the region. The health and wellbeing of the Parklands and that of the people of the Geelong region are intrinsically linked. The Parklands are home to rare and threatened species and provide critical biodiversity and habitat links. The Barwon River within the Parklands corridor comprises two "high value river reaches" under the Corangamite River Health Strategy. The International Healthy Parks Healthy People Congress held in Melbourne April 2010 highlighted the benefits of parks and asked governments of the world to adopt the philosophy and act according to the principles. The benefits of parks, from wilderness to local green spaces, included in the Melbourne Communiqué are summarised as follows:

- Parks are integral to healthy people and a healthy environment
- Human health depends on healthy ecosystems
- Parks conserve healthy ecosystems
- Contact with nature can improve human health
- Parks contribute to economic growth and wellbeing
- Parks contribute to cohesive, vibrant and healthy societies

### LAKE CONNEWARRE STATE GAME RESERVE

The Lake Connewarre State Game Reserve comprising Reedy Lake, Hospital Swamp, Salt Swamp and sections of the Barwon Estuary is a significant waterbird breeding and feeding area supporting large numbers of migratory waders and native waterfowl. Rare and threatened species which are found there include Orange-bellied Parrot, Hooded Plover, Little Tern, Fairy Tern and Freckled Duck. It was declared a wetland of international significance under the Ramsar Convention in 1983 and is a part of the Port Phillip Bay (Western Shoreline) and Bellarine Peninsula Ramsar Site and is also subject to three international agreements for the protection of migratory birds.

### BARWON RIVER ESTUARY

The Barwon River Estuary changes with the tides. There are extensive stands of regionally significant mangroves and saltmarsh vegetation along with some older stands of Moonah trees. The Barwon Bluff Marine Sanctuary contains significant environmental values including sandstone and basalt reefs with thick patches of giant and bull kelp which are important aquatic habitat zones.

### KEY PRIORITIES

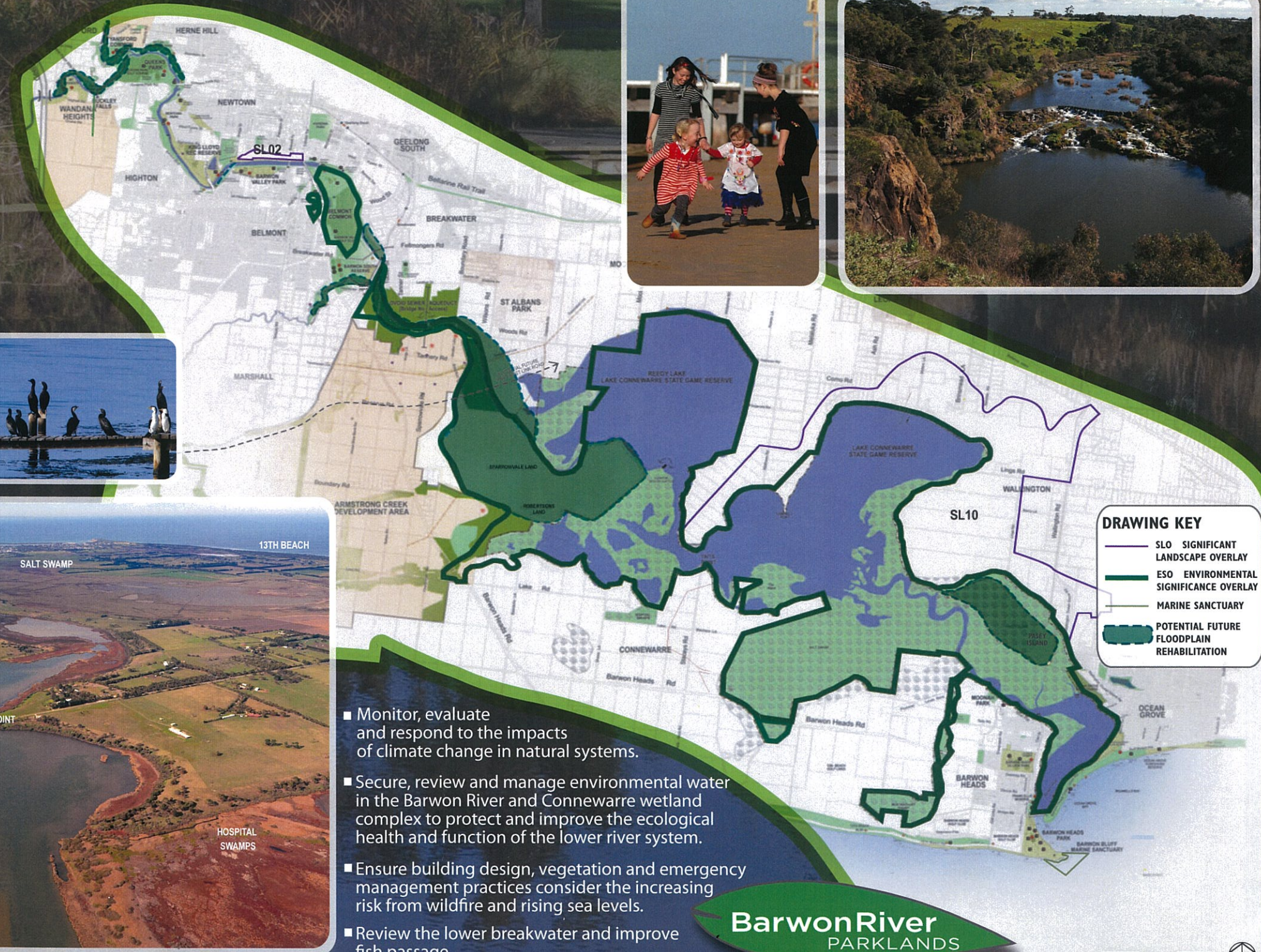
- Protect and restore remnant vegetation communities along the Barwon River as part of integrated, holistic and sustainable management of the waterway corridor.
- Protect and restore habitat for species of national, state and regional significance.
- Develop partnerships with private landholders to remove gaps and barriers to a continuous riparian and floodplain habitat corridor and bio-link.
- Manage the impacts of urbanisation on stormwater run off to protect water quality and natural waterway function.
- Recognise and maintain the hydraulic function and capacity of the Barwon River Floodplain.
- Continue staged woody weed control along the river to reduce potential downstream impacts.



### BARWON RIVER

Remnant River Red Gums are scattered through the upstream section of Parklands. There has been extensive weed control and revegetation completed over many years with the invaluable assistance of committed local community and volunteer groups to protect areas of remnant vegetation and reintroduce the full range of indigenous species found along the Barwon River.

Significant fish species of the Barwon River include Australian Grayling, Short-headed Lamprey, Short-finned Eel and Common Galaxias. Baum Weir provides important summer refuge for Platypus and the natural floodplain of the Barwon River with areas of Tangled Lignum and Common Reed provides ideal habitat for a number of threatened frog species, reptiles and mammals including possums and Black Wallaby.



**Barwon River**  
PARKLANDS

# TO HONOUR THE PAST

## Cultural Heritage and Enhancement

The Wada wurrung people used the Barwon River, Lake Connewarre and Barwon Estuary system as a key food source and trading route and the entire Barwon River Parklands area is of high archaeological and cultural heritage value. The Barwon River forms an integral part of the history and development of the Geelong region from the first interaction between local tribes and William Buckley; its importance for supply of fresh water to the town; early industrial development including paper and flour mills, wool scours and woollen mills; historic bridges, homesteads and water based recreation including rowing which began in 1864.

A key Barwon River Parklands initiative will be the staged development of interpretive signage and information regarding the rich and diverse history of the River through a series of self guided tours completed along the Barwon River Trail.

### GEELONG INDIGENOUS TRAIL

The Barwon River Parklands will form a key part of the proposed Geelong Indigenous Trail, working inclusively with local Indigenous groups to develop an interactive trail around Geelong that promotes awareness of Indigenous culture unique to Geelong. It is envisaged the trail will be interactive and combine pictorial, narrative and art interpretations of the area.

### FYANSFORD – QUEENS PARK – BUCKLEY FALLS

The first settlements were initially located around the historic Fyansford area, the only source of fresh drinking water. Weirs upstream of Buckley Falls still divert water from the river to the magnificent Barwon Paper Mill c.1878 to this day and can be viewed from various spots along the river. Queens Park was reserved in 1850 in response to widespread deforestation and early planting was assisted by Ferdinand von Mueller. Today exotic specimen trees combine with ancient River Red Gums including a canoe tree to provide a picturesque landscape experience.

### ROWING MILE AND INDUSTRIAL PRECINCT

The modern day refrigerator was originated by local Geelong pioneer and businessman James Harrison, who invented the first mechanical ice-making machine, beginning operation in 1851 using river water pumped from the banks of the Barwon River into a cave at Rocky Point in Geelong. The West Fyans Street area is of major historical and architectural significance with various industrial buildings including Marnockvale, Godfrey Hirst and other woollen mills and scours along with substantial listed residential properties including Barwon Grange, Barwon Bank, Sladen House and Rosebank all built in the 1850s. The River has been used for rowing since 1864 with the first boat races held in 1876.



### EUROPEAN HISTORY

The Ovoid Sewer Aqueduct which was constructed as part of the first Geelong sewerage scheme in 1915, was decommissioned in 1992 and is listed on the Victorian Heritage Register. Interpretation of remnants of this structure along with other former land uses in the area such as orchards, market gardens and grazing will be a key feature in new public Parklands established along the Barwon River.



### BARWON HEADS

Historic boathouses, jetties, the sea wall/promenade and numerous public and private properties which still exist along the Barwon River and estuary contribute to the heritage significance of the township. Barwon Heads Bridge was the longest timber road bridge in Victoria and interpretation around the new bridges will form a key element in this section of Parkland.

# PROVIDE FOR GROWING COMMUNITIES

## Future Growth

The Geelong and the Bellarine Peninsula have grown strongly over the last ten years and a significant proportion of this population growth has been concentrated in areas along the Barwon River. During the next twenty years the majority of Geelong's population growth will also occur in close proximity to the the Barwon River Parklands, predominantly in growth areas at Armstrong Creek and Highton/Wandana with infill development in existing suburbs such as Leopold and St. Albans Park.

As residential development continues to expand open space in the region will be at a premium becoming increasingly important to community health and well being . Expansion of the parklands to provide green open space and a transition area between encroaching urban development, passive and active recreational space and the key biodiversity and habitat values of the Barwon River and Lake Connewarre State Game Reserve is the key objective for future planning:

### FUTURE OPEN SPACE

**C** As infill development continues in the St. Albans Park, Leopold and Breakwater Area a new park will be established between Tucker Street and Boundary Road to protect and enhance areas of remnant vegetation and open the large open space reserve to the public. Following resolution of future management of the historic Sewer Aqueduct public access will be restored along the Barwon River.

### ARMSTRONG CREEK LINEAR OPEN SPACE

**D** As development proceeds at Armstrong Creek new linear open space reserves will be established along the Barwon River. The new park will include public access to the River via a network of new trails and boardwalks with birdhides, picnic and visitor facilities developed in stages as development works are completed and specific funding is made available.

### MOORABOOL RIVER - FYANSFORD

**A** As development occurs at the former Geelong Cement Site new open space reserves will be established along the Moorabool River upstream of the Hamilton Hwy linking from the Geelong Ring Road through to Fyansford Common and the Barwon River. This will enable environmental protection and rehabilitation works in conjunction with staged development of recreation facilities including a network of paths, water access platforms, picnic facilities and playspace.



### MT. BRANDON - BUCKLEY FALLS

**B** As development occurs at Highton and Wandana new parkland areas already reserved east of the Geelong Ring Road will be opened to the public linking through to existing open space at Buckley Falls Park. Staged development of facilities will include a network of walking and cycling paths, water access platforms, picnic facilities and playspace. Longer term, a new bridge across the Barwon River at the Geelong Ring Road will link back via a new open space network to the historic Barwon Paper Mill, Moorabool River Reserves and Fyansford Common.



# RENEW A VISION

## Strategic Directions Plan

A well - connected, diverse and healthy water way parkland, that balances recreation and conservation, and provides for everyday enjoyment of nature, and community liveability and well - being.

### KEY GOALS

An enhanced and resilient open space network that:

- protects the natural environmental and cultural values of the Parklands and the Barwon River.
- protects and enhances environmental values of the river and its floodplain, wetlands and estuary, and connects communities with natural settings.
- is accessible and reflects the needs of a diverse community.
- provides open space for growing communities and future generations.
- provides a diversity of quality recreational opportunities and settings for enjoyment, social connection and wellbeing.
- increase awareness and appreciation of nature and cultural heritage.
- responds and adapts to the challenges of climate change.

### STRATEGIC DIRECTIONS

Consistent with Healthy Parks Healthy People and the G21 Environment Pillar, the key strategic directions for the Barwon River Parklands include:

#### Expanding a connected network

Environmental values at Lake Connewarre and lack of public land in some areas mean development of an off road link between Geelong and Barwon Heads may take many years to achieve. Community consultation completed in 2009 indicated completion of shorter more frequently used looped paths was the highest priority. Projects to expand the trail and open space network include:

- 1 Establish trail links west from Buckley Falls Park to new open space areas at Mt. Brandon including staged development of new recreation facilities and environmental rehabilitation.
- 2 Investigate integration of pedestrian and cycle access across the Barwon River at the Geelong Ring Road bridge.
- 3 Investigate future opportunities to expand open space along the north side of the River enabling completion of an off road trail loop back to Baum Weir and Fyansford Common.
- 4 Improve access to the Barwon River at Pakington Street.
- 5 Investigate improved on and off road trail links from the Barwon River to the existing Bellarine Rail Trail including upgrade of Wal Whiteside Walk.
- 6 Investigate improved links to existing Waurn Ponds Creek Trail.
- 7 Investigate improved on and off road links along the Barwon River at Barwon Heads as part of the Round the Head Trail.

### Strengthening and promoting features of the Barwon River Parklands

- 8 Investigate opportunities for development of new heritage trails and interpretation for significant sites in new and existing parks and along the Barwon River Trail.
- 9 Promote the Barwon River Parklands and major events on key regional tourism routes.
- 10 Investigate establishment of a Regional Sustainability Education Centre.

### Strengthening connections with nature

- 15 Improve public access to the Lake Connewarre State Game Reserve at Ash Road, McCorkhell Reserve, Moolap Station Road and Taits Point through to Hospital Swamps.
- 16 Investigate a canoe/kayak link between Geelong and Barwon Heads.
- 17 Investigate opportunities to undertake floodplain rehabilitation works and improve habitat corridor values and buffers to adjoining future development.
- 18 Develop new boardwalks and signage to protect significant vegetation and habitat areas at Moonah Park while providing walking and fishing access along the Barwon River.

### Revitalising the existing network

Use the Healthy Parks Healthy People philosophy to provide a new framework within which to revitalise and plan settings, facilities, programs and services. Provide investment to maintain and improve the quality and diversity of the existing network incorporating Environmental Sustainable Design (ESD) and universal access through design principles for new infrastructure and facilities. Implement the statewide Active in Parks Program.

- 19 Continue staged woody weed control at Federick Morton Reserve.
- 20 Develop new nature based playscapes at Barwon Valley Park and Frank Ellis Reserve, Barwon Heads and longer term in new parklands at Mt. Brandon and Armstrong Creek.
- 21 Rehabilitate the Former Geelong Junior Motorcross Site including environmental restoration and provision for community events. Improve links around Belmont Common to complement the new Criterion Track.
- 22 Establish an off road shared trail link from Barrabool Road to the Belmont Common Boat Ramp.
- 23 Investigate improved circuit walking trails and facilities at Ocean Grove Spit.



DRAWING KEY	
<span style="display: inline-block; width: 15px; height: 10px; background-color: #90EE90; border: 1px solid black;"></span>	EXISTING OPEN SPACE
<span style="display: inline-block; width: 15px; height: 10px; background-color: #3CB371; border: 1px solid black;"></span>	POTENTIAL FUTURE OPEN SPACE
<span style="display: inline-block; width: 15px; height: 10px; background-color: #FFDAB9; border: 1px solid black;"></span>	FUTURE DEVELOPMENT
<span style="display: inline-block; width: 15px; border-bottom: 1px solid black;"></span>	LAKE CONNEWARRE STATE GAME RESERVE BOUNDARY
<span style="display: inline-block; width: 15px; border-bottom: 1px solid black;"></span>	EXISTING PATHS
<span style="display: inline-block; width: 15px; border-bottom: 1px dotted black;"></span>	ROWING
<span style="display: inline-block; width: 15px; border-bottom: 1px dashed black;"></span>	WATER SKIING
<span style="display: inline-block; width: 15px; border-bottom: 1px dashed red;"></span>	FUTURE TRAIL LINKS
<span style="display: inline-block; width: 15px; border-bottom: 1px solid black; border-left: 1px solid black; border-right: 1px solid black;"></span>	PRIMARY ON ROAD CYCLING ROUTE
<span style="display: inline-block; width: 15px; border-bottom: 1px dotted black;"></span>	IMPROVE ON ROAD WALKING / CYCLING ACCESS
<span style="display: inline-block; width: 15px; border-bottom: 1px dashed red;"></span>	SECONDARY LINKS SUBJECT TO FUTHER INVESTIGATION

### Planning the next wave of regional open space expansion

- 11 Establish new linear open space reserves along the Moorabool River. As development proceeds undertake staged establishment of trail links, recreation facilities and environmental rehabilitation north from Fyansford Common along the Moorabool River through to the existing Ring Road Trail.
- 12 Establish new parkland at the Ovoid Sewer Aqueduct Reserve including restoration of public access along the river and resolution of the future of the aqueduct structure and reserve. Continue environmental rehabilitation and undertake staged development of new circuit walking paths, with improved river access for fishing and canoeing.
- 13 Establish new linear open space reserves along the Barwon River at Armstrong Creek. Undertake staged establishment of trail links, recreation facilities and environmental rehabilitation with links through to Belmont Common along the River.
- 14 As part of long term future planning for a new east-west link road across the Barwon River consider opportunities for integrated pedestrian and cycle access to improve direct links between Armstrong Creek and St. Albans Park-Leopold and a new trail loop back to the Ovoid Sewer Aqueduct reserve along the north bank.

**Barwon River**  
PARKLANDS

# CELEBRATE ACHIEVEMENTS

Completed Works 2006 - 2010

**BARWON PARKLANDS  
CO - BRANDED SIGNAGE**  
\$8K BRP + \$8K COGG = \$16K

**BUCKLEY FALLS  
STAIRS UPGRADE-CONNECTION**  
\$55K BRP + \$55K CoGG = \$110K

**GEELONG ENVIRONMENT  
COUNCIL HIGHTON WETLANDS**  
\$5K BRP + \$101K COGG = \$106K

**ENVIRONMENTAL WORKS -  
QUEENS PARK /  
BARWON PAPER MILL**  
\$20K BRP + \$18.5K CoGG = \$38.5K

**MOORABOOL STREET  
BOAT RAMP LIGHTING**  
\$11.5K BRP + \$2.5K CCMA = \$14K

**WEST FYANS CAR PARK /  
TRAIL REALIGNMENT**  
\$48K BRP + \$48K CCMA = \$96K

**ROWING CLUB  
OFFICIALS SHELTER**  
\$10K BRP + \$2.5K CCMA = \$12.5K

**BARWON VALLEY WATER  
SKI CLUB PICNIC SHELTER**  
BRP COMMUNITY GRANT \$5K

**ENVIRONMENTAL WORKS -  
BELMONT COMMON**  
\$23K BRP + \$23K CCMA = \$46K

**OVOID SEWER AQUEDUCT  
WEED AND PEST MANAGEMENT**  
\$5K BRP + \$5K BW = \$10K

**ENVIRONMENTAL WORKS  
LEOPOLD - LAKE CONNEWARRE**  
\$28K BRP + \$22K COGG = \$50K

**GORDON TAFE -  
BARWON FLORA BOOKLET**  
BRP COMMUNITY GRANT \$5K

**ASH ROAD VIEWING PLATFORM**  
\$106K BRP + \$53K CoGG = \$159,000

**COGG COMMUNITY SERVICES  
BLOKES DAY OUT**  
BRP COMMUNITY GRANT \$550

PLANNING AND INVESTIGATIONS			
PROJECT	BRP	AGENCY	TOTAL
BUCKLEY FALLS CONNECTIONS STUDY	\$28,000	\$12,000 City of Greater Geelong	\$40,000
DRAFT TRAIL CONCEPT GEELONG TO BARWON HEADS	\$58,000		\$58,000
BARWON RIVER PARKLANDS COMMUNITY CONSULTATION	\$36,000		\$36,000
BARWON RIVER PARKLANDS STRATEGIC DIRECTIONS PLAN	\$45,000		\$45,000
OCEAN GROVE ESTUARY WALK STUDY	\$20,000	\$10,000 Barwon Coast Committee	\$30,000
OVOID SEWER AQUEDUCT LAND USE STUDY	\$25,000	\$25,000 Barwon Water	\$50,000

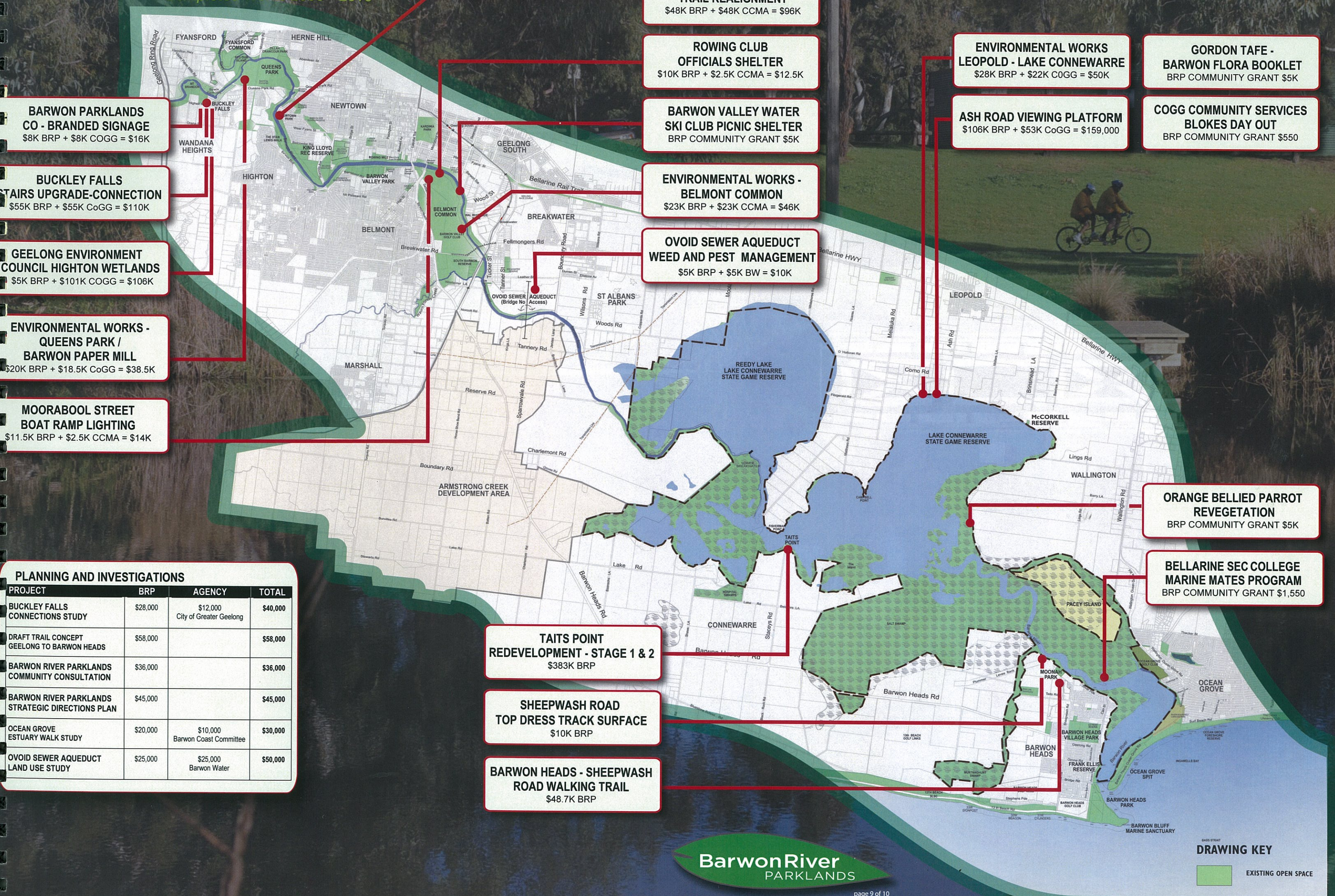
**TAITS POINT  
REDEVELOPMENT - STAGE 1 & 2**  
\$383K BRP

**SHEEPWASH ROAD  
TOP DRESS TRACK SURFACE**  
\$10K BRP

**BARWON HEADS - SHEEPWASH  
ROAD WALKING TRAIL**  
\$48.7K BRP

**ORANGE BELLED PARROT  
REVEGETATION**  
BRP COMMUNITY GRANT \$5K

**BELLARINE SEC COLLEGE  
MARINE MATES PROGRAM**  
BRP COMMUNITY GRANT \$1,550



**BarwonRiver  
PARKLANDS**

**DRAWING KEY**  
EXISTING OPEN SPACE

# DELIVER MORE

*Proposed Future Works*

PROPOSED HERITAGE TRAIL AND SIGNAGE

INVESTIGATE GEELONG RING ROAD PEDESTRIAN BRIDGE

EXTEND TRAIL TO WANDANA MT BRANDON

UPGRADE BARWON VALLEY PARK REGIONAL PLAYGROUND

NEW OFF ROAD TRAIL LINK FROM BARRABOOL ROAD TO BOAT RAMP

BELMONT COMMON - BREAKWATER BRIDGE LANDSCAPE WORKS

MASTERPLAN, REVEGETATION AND TRAIL LINK TO BELMONT COMMON

IN CONSULTATION WITH PRIVATE LANDHOLDERS INVESTIGATE OPPORTUNITIES TO EXPAND PUBLIC OPEN SPACE ADJOINING LAKE CONNEWARRE STATE GAME RESERVE

INVESTIGATE ESTABLISHMENT OF A REGIONAL SUSTAINABILITY CENTRE

CONTINUE COMMUNITY GRANTS PROGRAM

NEW QUEENS PARK FISHING PLATFORM & DOG SWIM ACCESS

STAGED WOODY WEED REMOVAL AT FREDERICK MORTON RESERVE

UPGRADE PAKINGTON ST ACCESS AND WETLAND

PROPOSED HERITAGE TRAIL AND SIGNAGE

UPGRADE LINKS TO THE BELLARINE RAIL TRAIL

ESTABLISH OVOID AQUEDUCT OPEN SPACE RESERVE & RESTORE RIVER ACCESS

UPGRADE WAL WHITESIDE WALK FACTORIES RD TO STEEL ST

LINK OVOID SEWER AQUEDUCT TO BELMONT COMMON VIA TUCKER STREET

UPGRADE CARPARK AT MOOLAP STATION ROAD

GEELONG - BARWON HEADS CANOE TRAIL INVESTIGATION

IMPROVE LINKS TO BELLARINE RAIL TRAIL

UPGRADE A.G McCORKELL RESERVE PICNIC & CAR PARK FACILITIES

UPGRADE FISHWAY PASSAGE AT LOWER BREAKWATER

INVESTIGATE LINK FROM TAIT'S POINT TO HOPITAL SWAMPS

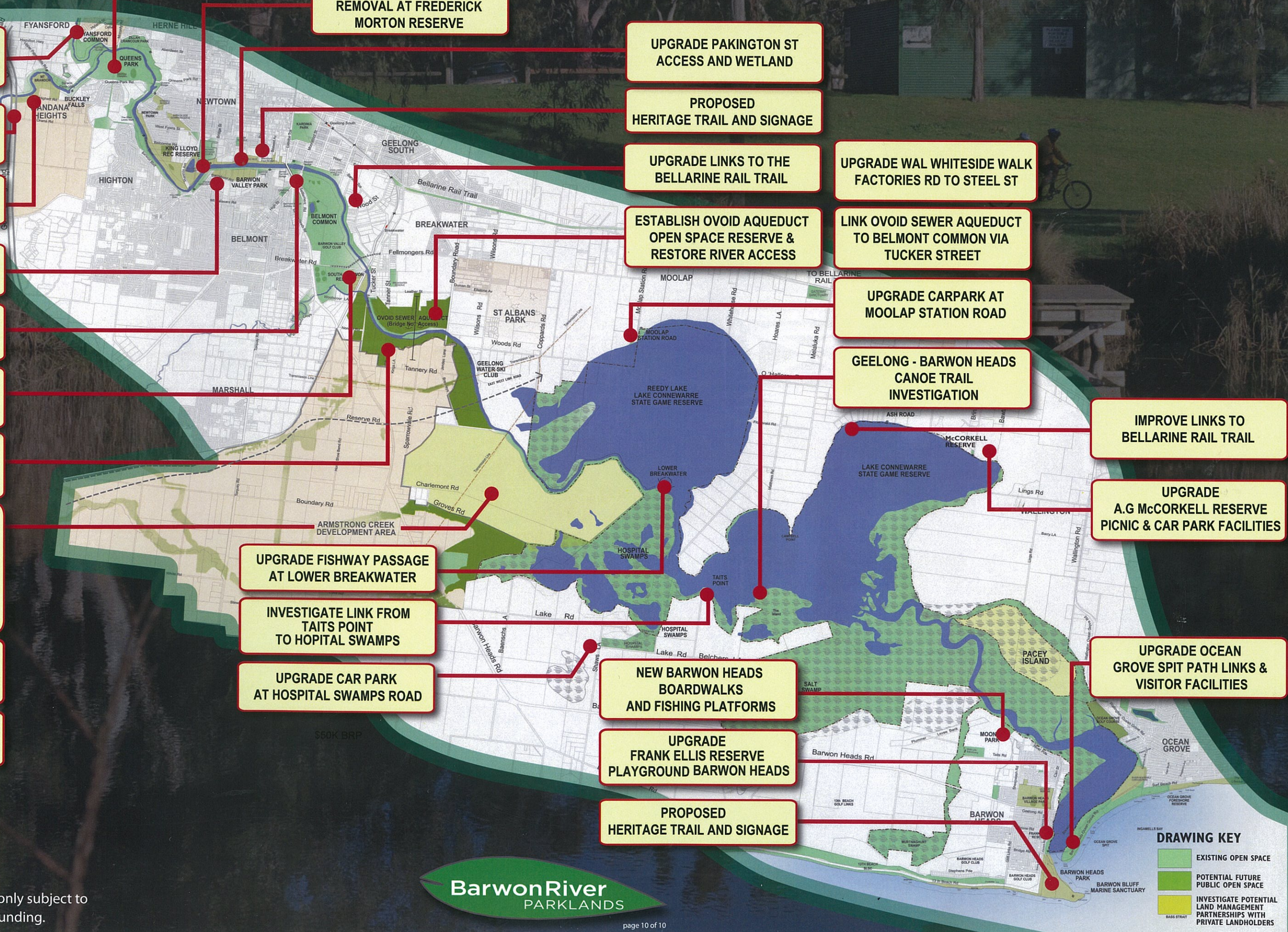
UPGRADE CAR PARK AT HOSPITAL SWAMPS ROAD

NEW BARWON HEADS BOARDWALKS AND FISHING PLATFORMS

UPGRADE FRANK ELLIS RESERVE PLAYGROUND BARWON HEADS

PROPOSED HERITAGE TRAIL AND SIGNAGE

UPGRADE OCEAN GROVE SPIT PATH LINKS & VISITOR FACILITIES



**DRAWING KEY**

- EXISTING OPEN SPACE
- POTENTIAL FUTURE PUBLIC OPEN SPACE
- INVESTIGATE POTENTIAL LAND MANAGEMENT PARTNERSHIPS WITH PRIVATE LANDHOLDERS



Provisional implementation only subject to design and confirmation of funding.