



CENTRAL GEE LONG

2017 PRIORITY PROJECTS

G21 REGIONAL PLAN IMPLEMENTATION

JUNE 2017



G21 is an alliance of the government, industry and community organisations working to improve people's lives in the Geelong region.

G21 IS THE FORMAL ALLIANCE OF GOVERNMENT, BUSINESS AND COMMUNITY ORGANISATIONS, WORKING TOGETHER TO IMPROVE THE LIVES OF PEOPLE WITHIN THE GEELONG REGION ACROSS FIVE MUNICIPALITIES.

G21 works as a forum to discuss regional issues across interest groups and municipalities resulting in better coordinated research, consultation and planning. We support the delivery of projects that benefit the region across municipal boundaries and are a platform to speak with one voice to all levels of government.

G21 is also the Strategic Planning Committee for the Geelong region and is responsible for leading the development and implementation of the region's strategic plan. In this role, we work closely with, and provide advice to, Regional Development Australia (RDA) and the State and Federal Governments on our region's needs and priorities.

With the establishment of Regional Development Australia (RDA), a Federal Government initiative, G21 has been working closely with the RDA Barwon South West (BSW) Committee to

further strengthen ties with all levels of government. The *G21 Geelong Region Plan* and our Priority Projects, along with that of the Great South Coast, are the foundation of the RDA BSW Committee's work to create sustainable regional communities.

G21 has strong representation on the Barwon Regional Partnership, with a number of G21 Directors and Pillar Members representatives on the Partnership in their respective roles in the community. The Partnership provides another opportunity to engage with government and provide a collective view on issues important to our region.

Our Alliance is made up of over 300 community leaders and specialists who are passionate about the future of the Geelong region and volunteer their time to be involved in G21 as Directors, Pillar members and within Working Groups.

In addition to this, more than 8,000 people from across the region subscribe to G21

e-News, our online newsletter. It is this level of involvement by government, industry and the community that makes G21 a successful and influential process for the identification of key regional projects.

ELAINE CARBINES
CHIEF EXECUTIVE OFFICER

Phone: 03 5227 4000
Mobile: 0437 202 300
email: ecarbines@G21.com.au

BILL MITHEN
CHAIRPERSON

email: chair@G21.com.au

Version 21.06.17



To view the online version of this document on your mobile device, scan this code with a QR scanning app.

CONTENTS

INTRODUCTION	4	PILLAR PROJECTS	74
G21 GEELONG REGION PLAN	4	ARTS AND CULTURE	74
SUMMARY OF PROJECTS	5	ECONOMIC DEVELOPMENT	74
COLLABORATING TO MAKE IT HAPPEN	6	EDUCATION AND TRAINING	75
REGIONAL ANALYSIS	8	ENVIRONMENT	75
PROJECT PRIORITISATION PROCESS	9	HEALTH AND WELLBEING	76
DIRECTION 1: PROTECT AND ENHANCE OUR ENVIRONMENT	10	PLANNING AND SERVICES	76
DIRECTION 2: CREATE SUSTAINABLE SETTLEMENTS	12	SPORT AND RECREATION	77
ARMSTRONG CREEK URBAN GROWTH AREA	14	TRANSPORT	77
GEELONG RING ROAD CONNECTIONS TO THE BELLARINE PENINSULA, GEELONG PORT & MIDLAND HWY	18	THE G21 PILLARS	78
REGIONAL RAIL CONNECTIONS	22	G21 ARTS AND CULTURE PILLAR	78
DIRECTION 3: STRENGTHEN OUR COMMUNITIES	26	G21 ECONOMIC DEVELOPMENT PILLAR	78
ADDRESSING DISADVANTAGE	30	G21 EDUCATION AND TRAINING PILLAR	79
CENTRAL GEELONG REVITALISATION	32	G21 ENVIRONMENTAL PILLAR	80
GEELONG CULTURAL PRECINCT	36	G21 HEALTH AND WELLBEING PILLAR	81
GEELONG SECONDARY SCHOOLS AND COMMUNITY DIGITAL LEARNING HUB	40	G21 PLANNING AND SERVICES PILLAR	82
REGIONAL MOTOCROSS FACILITY	44	G21 SPORT AND RECREATION PILLAR	83
DIRECTION 4: REFOCUS OUR ECONOMY	48	G21 TRANSPORT PILLAR	84
AVALON AIRPORT, INCLUDING INTERNATIONAL TERMINAL	50	G21 WORKING GROUPS	85
CONVENTION AND EXHIBITION CENTRE	54		
GREAT OCEAN ROAD	58		
PORTARLINGTON SAFE HARBOUR	66		
WATERFRONT GEELONG - SAFE HARBOUR PRECINCT	70		

INTRODUCTION

G21 GEELONG REGION PLAN

THE FOUNDATION OF PRIORITY PROJECTS

‘The Geelong Region Plan - a sustainable growth strategy’ is the most comprehensive, up-to-date and widely supported sustainability plan in regional Victoria.

The plan looks towards 2050 and addresses the challenges and opportunities the G21 region will face in the areas of environment, settlement, land use, community strength and the economy. This plan is the foundation of all G21 activities and projects.

The plan was developed during 2006/07 and represents the work and opinions of hundreds of people and organisations including G21 municipalities, the State Government, peak bodies and environmental, community and business organisations of the region.

It is a collaborative “grass roots” approach to long-term regional challenges. It is a plan for the future of our region, developed by the people of our region. To be successful, it will need to continue to be endorsed, supported and implemented by all levels of government and members of the Alliance.

The research supporting this strategy is robust and includes data from regional, Victorian and national organisations, as well as specifically commissioned research, analysis and extensive consultation.

This plan is unique in Australia and has created new opportunities for delivering priority projects to ensure future productivity, liveability and sustainability of our region.

The most important projects for achieving the objectives of ‘The G21 Geelong Region Plan’ are presented in this document. They have been selected according to their economic, environmental and social importance as well as their likelihood of implementation.

The five directions of ‘The Geelong Region Plan’ are integral to our ability to respond to the challenges and opportunities the region faces.



DIRECTION 1: PROTECT & ENHANCE OUR ENVIRONMENT

Bring together government, statutory authorities, community and business people in a deliberate and organised way to agree on and resolve the region's biggest environmental challenges including climate change, water supply and the health of our ecosystems.

DIRECTION 2: CREATE SUSTAINABLE SETTLEMENTS

Set aside, protect and use land to provide current and future choices for residential, industrial, commercial, rural and agricultural needs, while minimising impact on the natural environment. Key economic and service centres of the region must be vibrant and attractive, supporting a mix of residents, businesses and community activity.

DIRECTION 3: STRENGTHEN OUR COMMUNITIES

Engage, connect and unite the people of the region to build a framework for equitable access to the internationally recognised basic prerequisites of health. Further develop the region's access to and reputation for arts, culture, learning, recreation and diversity to create an economically productive, socially viable and ecologically sustainable future.

DIRECTION 4: REFOCUS OUR ECONOMY

Bring together public and private sector organisations to ensure ongoing links between the demands of the economy and the capacity of the workforce. This includes support for technology transfer and industry transition with internationally recognised telecommunications and technology capabilities.

COLLABORATING TO MAKE IT HAPPEN

Make our mark as a well informed, creative and innovative region that encourages fresh thinking and bright new ideas including initiatives to achieve competitive advantage in attracting outside investment, recruiting and retaining talent, increasing tourism and increasing political influence.

INTRODUCTION

SUMMARY OF PROJECTS

AND REQUESTS ALIGNED AGAINST 'THE G21 GEELONG REGION PLAN'

All of the G21 Priority Projects require ongoing collaboration, participation and support from Government, including the timely delivery of commitments that have been made to date. In addition, we make the following project-specific requests.

PROTECT AND ENHANCE OUR ENVIRONMENT

G21 Adventure Trails (An element of the Great Ocean Road Priority Project) (Page 61)	\$2.8m for the Great Ocean Walk \$600k for the You Yangs Mountain Bike Park \$480k for the Surf Coast Walk \$360k for the Forrest Mountain Bike Park \$14.6m to implement infrastructure on 'support trail experiences'.
---	--

CREATE SUSTAINABLE SETTLEMENTS

Armstrong Creek Urban Growth Area (Page 14)	\$200m to duplicate Barwon Heads Road. \$55m for the Armstrong Creek Town Centre Emergency Services Hub. \$42m for the Armstrong Creek West Precinct Regional Soccer Facility. \$303.5m for other infrastructure projects across the growth area. \$302.5m for other infrastructure items needed to develop communities.
--	--

Geelong Ring Road Connections (Page 18)	\$350m to construct Bellarine Link. \$17.6m to upgrade freight connections to the Port of Geelong. \$120-\$160m for duplication of the Midland Hwy to Bannockburn.
--	--

Regional Rail Connections (Page 22)	Increases in rail service between Geelong and Colac/Warrnambool. Rail line duplication between Geelong and Waurin Ponds Railway Stations. Designation of a public transport corridor linking Torquay to Geelong.
--	--

STRENGTHEN OUR COMMUNITIES

Addressing Disadvantage (Page 28)	\$75.1m for the regeneration initiative at Corio and Norlane. \$3m to implement GROW Strategic Plan. \$650k to implement Central Reserve Master Plan.
--	---

Central Geelong Revitalisation (Page 32)	\$10m to kick start priority projects identified in the action plan. \$17m to deliver Stages 2 & 3 of the Malop Street Green Spine. \$80-100m to support heavy vehicle and through traffic bypassing the CBD.
---	---

Geelong Cultural Precinct (Page 36)	\$40m to redevelop Geelong Gallery. \$160m for Stage 3 GPAC redevelopment.
--	---

GSSC Digital Learning Hub (Page 40)	\$4.7m to deliver high-speed internet to G21 region secondary schools.
--	--

Regional Motocross Facility (Page 44)	State Government to lead an inter-regional Working Group to further investigate prospective sites. Funding to build a regional motocross facility.
--	---

REFOCUS OUR ECONOMY

Apollo Bay Harbour Precinct (An element of the Great Ocean Road Priority Project) (Page 60)	\$150k to complete a business case and expression of interest process. \$10+ million to implement public infrastructure in the Development Plan.
--	---

Avalon Airport - including International Terminal (Page 50)	Assistance in attracting an international carrier. Provision of border agencies. Standardised border agency and Airservices' charges. Assistance in the realisation of the commercial/retail precinct.
--	---

Convention and Exhibition Centre (Page 54)	Funding for base design of a Geelong Convention and Exhibition Centre. Federal consideration for partial funding at an appropriate time.
---	---

Great Ocean Road (Page 58)	Federal and state government commitment to on-going long-term funding to maintain the Great Ocean Road as a vital economic asset. State government commitment to examine better coordination of management arrangements. Government financial support for key tourism initiatives.
-----------------------------------	--

Portarlington Safe Harbour (Page 66)	\$7.9m to complete waterside commercial infrastructure and improve harbour access. To release unallocated Aquaculture Fisheries Reserves to the market. Support to secure a site for a mussel hatchery.
---	---

Waterfront Geelong - Safe Harbour Precinct (Page 70)	\$9 million for Stage One of the Geelong Waterfront Safe Harbour Precinct.
---	--



MAKE OUR MARK AS A WELL INFORMED, CREATIVE AND INNOVATIVE REGION THAT ENCOURAGES FRESH THINKING AND BRIGHT NEW IDEAS INCLUDING INITIATIVES TO ACHIEVE COMPETITIVE ADVANTAGE IN ATTRACTING OUTSIDE INVESTMENT, RECRUITING AND RETAINING TALENT, INCREASING TOURISM AND INCREASING POLITICAL INFLUENCE.

- ▶ INFLUENCE THE WAY WE THINK AND ACT
- ▶ WORK TOGETHER TO DELIVER REGION-WIDE COMMUNITY BENEFITS
- ▶ USE DATA TO PLAN AND MEASURE PROGRESS



COLLABORATING TO MAKE IT HAPPEN

REGIONAL ANALYSIS

REVIEW OF THE G21 REGION'S KEY ISSUES AND OPPORTUNITIES

A review of the key issues and opportunities facing the G21 region provides context into the development of Priority Projects. Our strengths, vulnerabilities and threats generate into opportunities that have given rise to new projects.

STRENGTHS	CHALLENGES	OPPORTUNITIES	THREATS
Strong Educational institutions Creates education opportunities for the community and is a source of economic and creative vitality.	Under-serviced communities Pockets of entrenched disadvantage in our community, with displaced workers exacerbating this.	Biotechnology An emerging source of quality employment for our region based on the intellectual assets of bodies including Deakin University, Barwon Health and CSIRO.	Rapidly changing economy Globalisation, the rise of emerging markets and the reduction of trade barriers in Australia, has severely impacted our region's employment base.
Avalon Airport Major infrastructure asset that is underutilised.	Health outcomes Region rates lower than the Victorian average in some significant health-related indicators.	Tourism infrastructure Our coastline, including the Great Ocean Road, provides us with an outstanding tourism opportunity which the region has successfully utilised. There is significant growth in tourism numbers, especially from the lucrative international sector.	Climate change Climate is likely to be dramatically different in the near future, with varied impacts on agricultural enterprises, rising sea levels affecting coastal communities and water availability for urban, industrial and agricultural use.
Port infrastructure Victoria's largest bulk port that can service growing demand from agricultural products.	Education outcomes Lower than the Victorian average in all but trades, with lower post-secondary qualifications and one in four children leaving school early.	Aquaculture & marine industry Extensive and relatively pristine coastline provides significant opportunities for the rapidly expanding aquaculture and marine industries.	Carbon Footprint Carbon intensive industries will come under enormous pressure as we move to a carbon-constrained future.
Research capabilities Presence of two CSIRO facilities, Deakin University and Barwon Health provides intellectual horsepower to drive future economy.	Links to Melbourne Strained road and transport links (rail and road) between Melbourne and the region. The Western Distributor (funded May 2016) should help alleviate this.	Developments arising from infrastructure such as the Geelong Ring Road Will attract residents to the region and creates distribution, logistics and agricultural development opportunities.	
Growing services and events sector Injects more than \$66 million into the local economy, creating the equivalent of 527 full time jobs each year.	Public Transport A large region, with dispersed population centres creates a demand for public transport improvements and coordination.	Sustainable growth Great lifestyle and fantastic opportunities can attract people to invest or live in the region ensuring the continued liveability of the region.	
Environment and Lifestyle Recognised for its ideal lifestyle, the Geelong region is home to the best surf beaches, gourmet food producers and wineries as well as internationally recognised major events.	Ageing population Creates shrinking workforce and presents challenges to health service provision.	Connected-up government Strong leadership, strength of vision and understanding of the importance of working cross boundaries are instrumental in successfully leveraging government funding.	
Geelong Football Club A huge economic stimulus for the region whose success generates pride in the community.		GROW A ambitious long-term strategy to tackle persistent disadvantage in the G21 region by reducing unemployment rates in target areas.	

PROJECT PRIORITISATION PROCESS

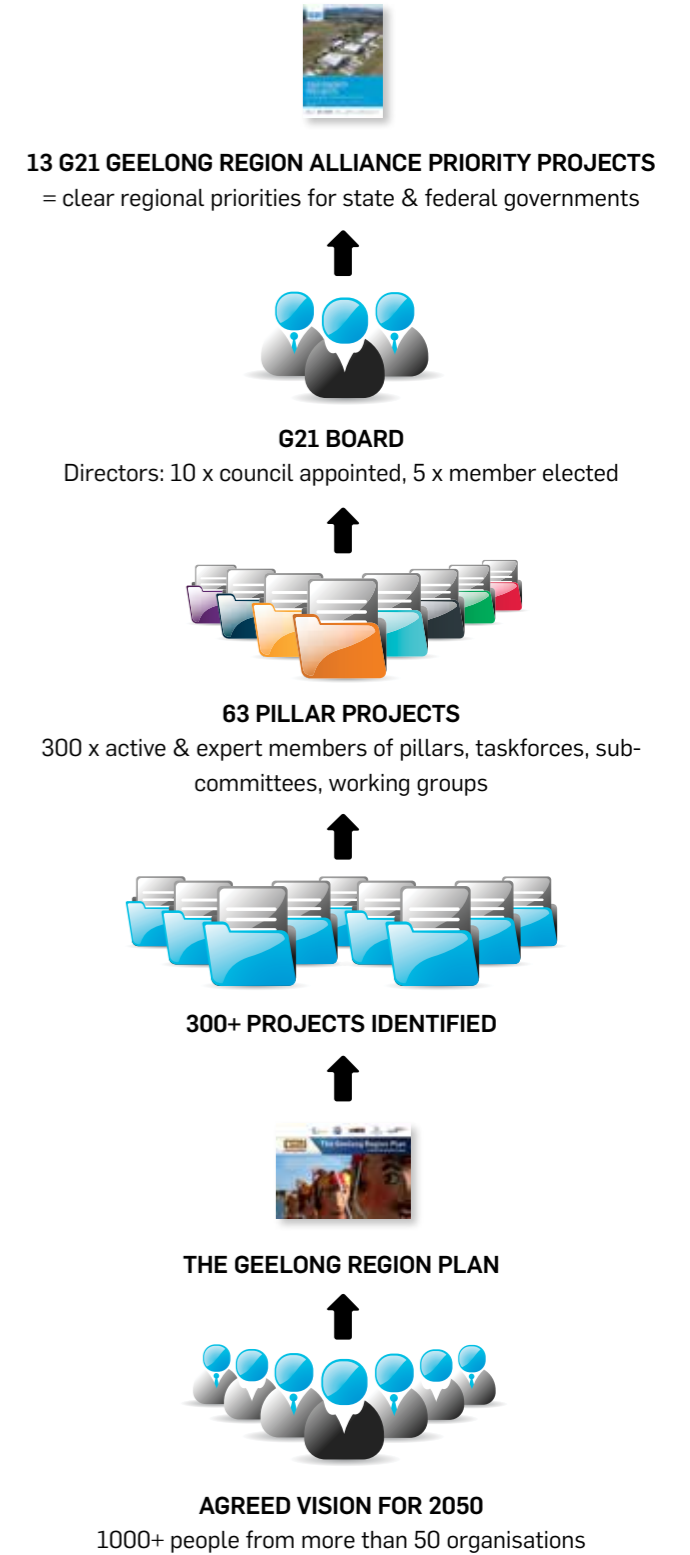
The G21 consultation process commences at community level. The community identify and present projects through the relevant G21 Pillar, who establish whether the project aligns against the objectives of, and contributes to the implementation of 'The G21 Geelong Region Plan'. If the Pillar considers the project to be of regional significance it becomes known as a Pillar Project. Currently G21 has 67 Pillar Projects.

As experts in their respective fields, the G21 Pillars assess each Pillar Project against the Priority Project criteria, including:

- social, environmental and economic benefits
- strategic alignment with the objectives of 'The G21 Geelong Region Plan'
- leadership and human resources
- funding potential.

If a project meets all criterion and has the support of a Pillar, it is then considered by the G21 Board for endorsement. If approved, these projects are known as 'Priority Projects' and become the key focus of G21's activities. G21 currently has 13 Pillar Projects that are endorsed by the G21 Board as Priority Projects. All of these G21 Priority Projects are critical to the sustainable growth of the G21 region.

- ▶ ADDRESSING DISADVANTAGE
- ▶ ARMSTRONG CREEK URBAN GROWTH AREA
- ▶ AVALON AIRPORT - INCLUDING INTERNATIONAL TERMINAL
- ▶ CENTRAL GEELONG REVITALISATION
- ▶ CONVENTION AND EXHIBITION CENTRE
- ▶ GEELONG CULTURAL PRECINCT
- ▶ GEELONG RING ROAD CONNECTIONS
- ▶ GEELONG SECONDARY SCHOOLS & COMMUNITY DIGITAL LEARNING HUB
- ▶ GREAT OCEAN ROAD
- ▶ PORTARLINGTON SAFE HARBOUR
- ▶ REGIONAL MOTOCROSS FACILITY
- ▶ REGIONAL RAIL CONNECTIONS
- ▶ WATERFRONT GEELONG - SAFE HARBOUR PRECINCT





BRING TOGETHER GOVERNMENT, STATUTORY AUTHORITIES, COMMUNITY AND BUSINESS PEOPLE IN A DELIBERATE AND ORGANISED WAY TO AGREE ON AND RESOLVE THE REGION'S BIGGEST ENVIRONMENTAL CHALLENGES INCLUDING CLIMATE CHANGE, WATER SUPPLY AND THE HEALTH OF OUR ECOSYSTEMS.

- ▶ RESPOND TO THE CHALLENGE OF CLIMATE CHANGE
- ▶ USE OUR WATER RESOURCES MORE EFFICIENTLY
- ▶ MAINTAIN AND RESTORE OUR NATURAL ASSETS
- ▶ REDUCE OUR EVERYDAY ENVIRONMENTAL IMPACTS
- ▶ DEMONSTRATE ENVIRONMENTAL LEADERSHIP

G21 ADVENTURE TRAILS

SEE GREAT OCEAN ROAD PRIORITY PROJECT (ADVENTURE TRAILS)

(PAGE 61)

DIRECTION 1: PROTECT & ENHANCE OUR ENVIRONMENT



SET ASIDE, PROTECT AND USE LAND TO PROVIDE CURRENT AND FUTURE CHOICES FOR RESIDENTIAL, INDUSTRIAL, COMMERCIAL, RURAL AND AGRICULTURAL NEEDS, WHILE MINIMISING IMPACT ON THE NATURAL ENVIRONMENT. KEY ECONOMIC AND SERVICE CENTRES OF THE REGION MUST BE VIBRANT AND ATTRACTIVE, SUPPORTING A MIX OF RESIDENTS, BUSINESSES AND COMMUNITY ACTIVITY.

- ▶ MINIMISE THE AMOUNT OF LAND USED FOR URBAN DEVELOPMENT
- ▶ CREATE A NETWORK OF WELL DESIGNED, SAFE AND HEALTHY COMMUNITIES
- ▶ ACHIEVE EFFICIENCY IN PEOPLE AND FREIGHT MOVEMENT
- ▶ PROVIDE LAND FOR INDUSTRY AND COMMERCE

DIRECTION 2: CREATE SUSTAINABLE SETTLEMENTS

AT A GLANCE

\$208.4M+

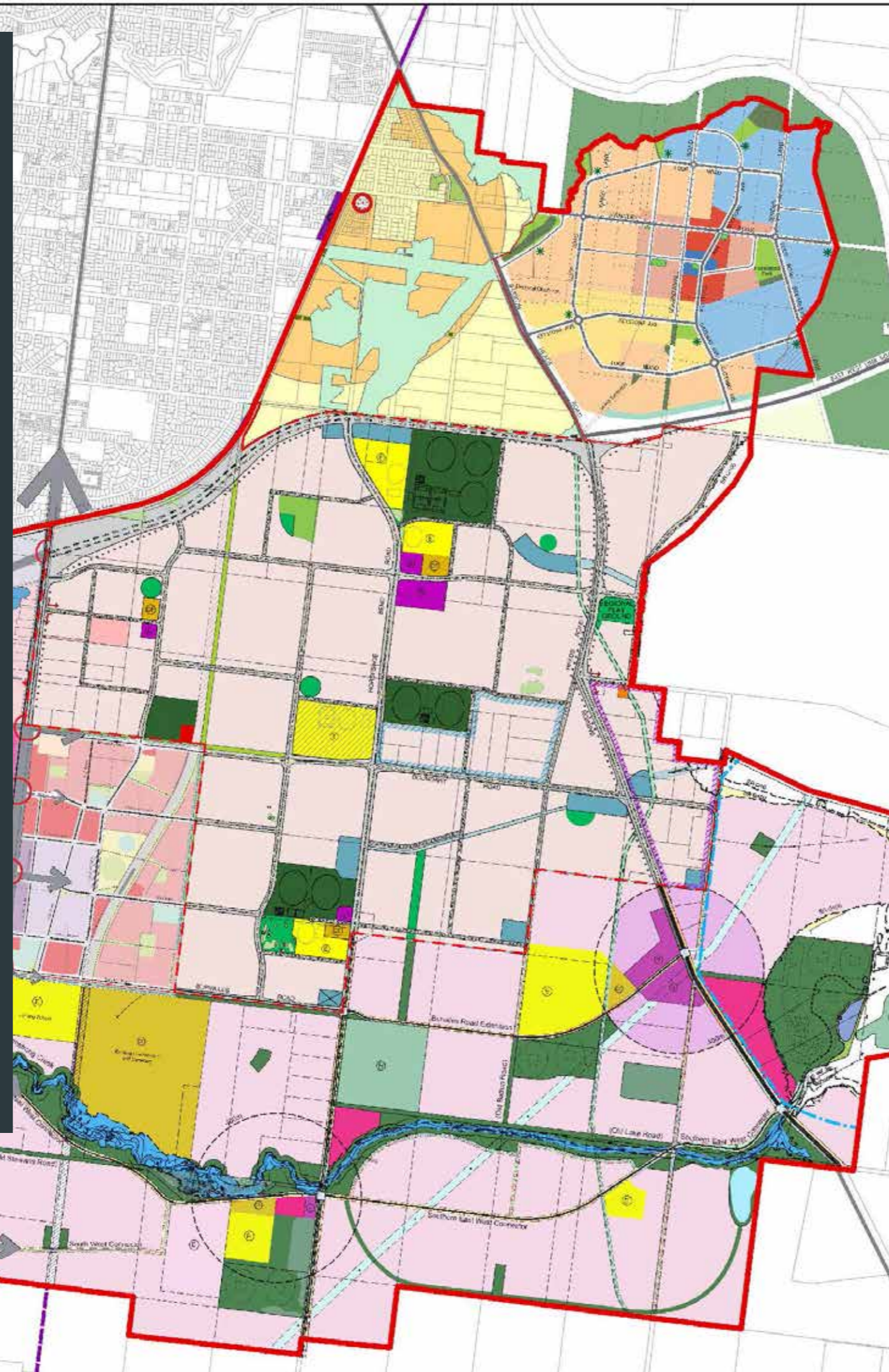
COMMITTED FROM STATE AND FEDERAL GOVERNMENT

- ▶ \$10.4 MILLION FOR ARMSTRONG CREEK INITIAL SERVICES
- ▶ \$32 MILLION TO BUILD A PRIMARY SCHOOL AND A SPECIAL NEEDS SCHOOL
- ▶ \$26 MILLION TO BUILD WAURN PONDS RAILWAY STATION (COMPLETE)
- ▶ \$20 MILLION ARMSTRONG CREEK WEST PRIMARY SCHOOL
- ▶ \$13.6 MILLION TO BUILD WAURN PONDS POLICE STATION AND SES COMPLEX (COMPLETE)
- ▶ A PUBLIC HOSPITAL SERVICE FROM THE EPWORTH WAURN PONDS
- ▶ STAGE 1 OF A MARSHALL RAILWAY STATION UPGRADE
- ▶ \$90.4 MILLION TO BUILD SECTION 4C OF THE GEELONG RING ROAD (ANGLESEA ROAD TO SURF COAST HWY)
- ▶ \$5 MILLION TO DEVELOP THE 20-BED ANAM CARA COMMUNITY HOSPICE
- ▶ \$4 MILLION FOR A DETAILED CORRIDOR PLANNING STUDY DETERMINING ALIGNMENT OF BELLARINE LINK
- ▶ \$100 MILLION FEDERAL (2017 BUDGET) AND AN UNSPECIFIED STATE COMMITMENT (2017 BUDGET) FOR RAILWAY DUPLICATION BETWEEN SOUTH GEELONG AND WAURN PONDS
- ▶ \$3 MILLION TO INVESTIGATE TRANSPORT OPTIONS FOR ARMSTRONG CREEK
- ▶ FUNDING TO PLAN FOR THE DUPLICATION OF BARWON HEADS ROAD.

\$903M

REQUIRED FROM STATE AND FEDERAL GOVERNMENT

- ▶ \$200 MILLION TO DUPLICATE BARWON HEADS ROAD
- ▶ \$55 MILLION FOR THE ARMSTRONG CREEK TOWN CENTRE EMERGENCY SERVICES HUB
- ▶ \$42 MILLION FOR THE ARMSTRONG CREEK WEST PRECINCT REGIONAL SOCCER FACILITY
- ▶ \$303.5 MILLION FOR OTHER INFRASTRUCTURE PROJECTS ACROSS THE GROWTH AREA
- ▶ \$302.5 MILLION FOR OTHER INFRASTRUCTURE ITEMS NEEDED TO DEVELOP COMMUNITIES



ARMSTRONG CREEK URBAN GROWTH AREA

WILL ACCOMMODATE 60,000 PEOPLE AND PROVIDE 22,000 JOBS IN ONE OF VICTORIA'S LARGEST CONTIGUOUS GROWTH AREA

THE NEED

The G21 region is experiencing strong population growth. Several development projects are being delivered across the region to accommodate this growth, by far the largest being Armstrong Creek.

The City of Greater Geelong (CoGG) commenced the planning of the Armstrong Creek Urban Growth Area in recognition of the urgent need for additional residential land supply in the G21 region. The urban development of the 2,600 hectares of farming land at Armstrong Creek will accommodate the bulk of Geelong and the region's growth in the near future and provides the opportunity to develop a community that is sustainable economically, environmentally and socially and set new standards in best practice urban development.

Armstrong Creek will ultimately accommodate approximately 60,000 people and provide approximately 22,000 jobs in one of the largest contiguous growth areas in Victoria. The very scale of this development has required strong coordination with State Government because of the major commitment that will be required to provide services and infrastructure over a period of 20-30 years.

Funding is now required to implement critical civil and social infrastructure.

This is a Planning & Services Pillar Project.

PROJECT CHAMPION

Peter Bettess, General Manager Planning and Development, City of Greater Geelong.

▶ **CREATE SUSTAINABLE SETTLEMENTS**

ARMSTRONG CREEK URBAN GROWTH AREA (CONT.)

PROJECT AIMS

The Armstrong Creek Urban Growth Area is one of the largest contiguous urban developments in Victoria and provides the opportunity to apply the most progressive and innovative planning and engineering methods.

Implementation of civil and social infrastructure will develop a community that is sustainable economically, environmentally and socially and set new standards in best practice urban development. Critical to its development are:

- Community facilities and services, education services and health services
- Housing Diversity - a wide range of housing options to meet the needs of a diverse population
- Integrated open space network - active and passive open space, waterways, wetlands, bushland
- Transport and movement - access to sustainable and active transportation infrastructure
- Integrated Water Management Systems - to encourage efficient and sustainable water use
- Utilities Plan - well-planned, strategically located infrastructure for electricity, gas, telecommunications, water and roads.

WHAT HAS BEEN COMMITTED

The State Government has committed:

- \$10.4 million for Armstrong Creek initial services
- \$32 million to build a primary school and a special needs school (open 2018)
- \$26 million to build Waurm Ponds Railway Station
- \$20 million Armstrong Creek West Primary School
- \$13.6 million to build Waurm Ponds Police Station and SES Complex
- a public hospital service from the Epworth Waurm Ponds
- Stage 1 of a Marshall Railway Station upgrade
- \$90.4 million to build Section 4C of the Geelong Ring Road (Anglesea Road to Surf Coast Hwy)
- \$5 million to build Anam Cara Community Hospice
- \$4 million for a detailed corridor planning study determining alignment of Bellarine Link
- \$4 million to plan railway duplication between South Geelong and Waurm Ponds
- \$3 million to investigate transport options for Armstrong Creek
- funding to plan for the Barwon Heads Road duplication.

WHAT IS REQUIRED

A Government commitment of:

FIGURE 1 - CRITICAL FUNDING REQUIREMENTS

CRITICAL INFRASTRUCTURE ITEM	FUNDING SOURCE	FUNDING REMAINING
Barwon Heads Road duplication (Settlement Rd to Lower Duneed Rd)	State / Fed Govt	\$200 MILLION
Armstrong Creek Town Centre Emergency Services Hub (to accommodate the CFA, Police, Ambulance and a Regional Emergency Response Centre)	State Govt	\$55 MILLION
Armstrong Creek West Precinct Regional Soccer Facility (7 pitches including a-class facility and pavilion)	Council / State Govt / Fed Govt	\$42 MILLION
TOTAL		\$297 MILLION

FIGURE 2 - INFRASTRUCTURE PROJECTS ACROSS THE GROWTH AREA

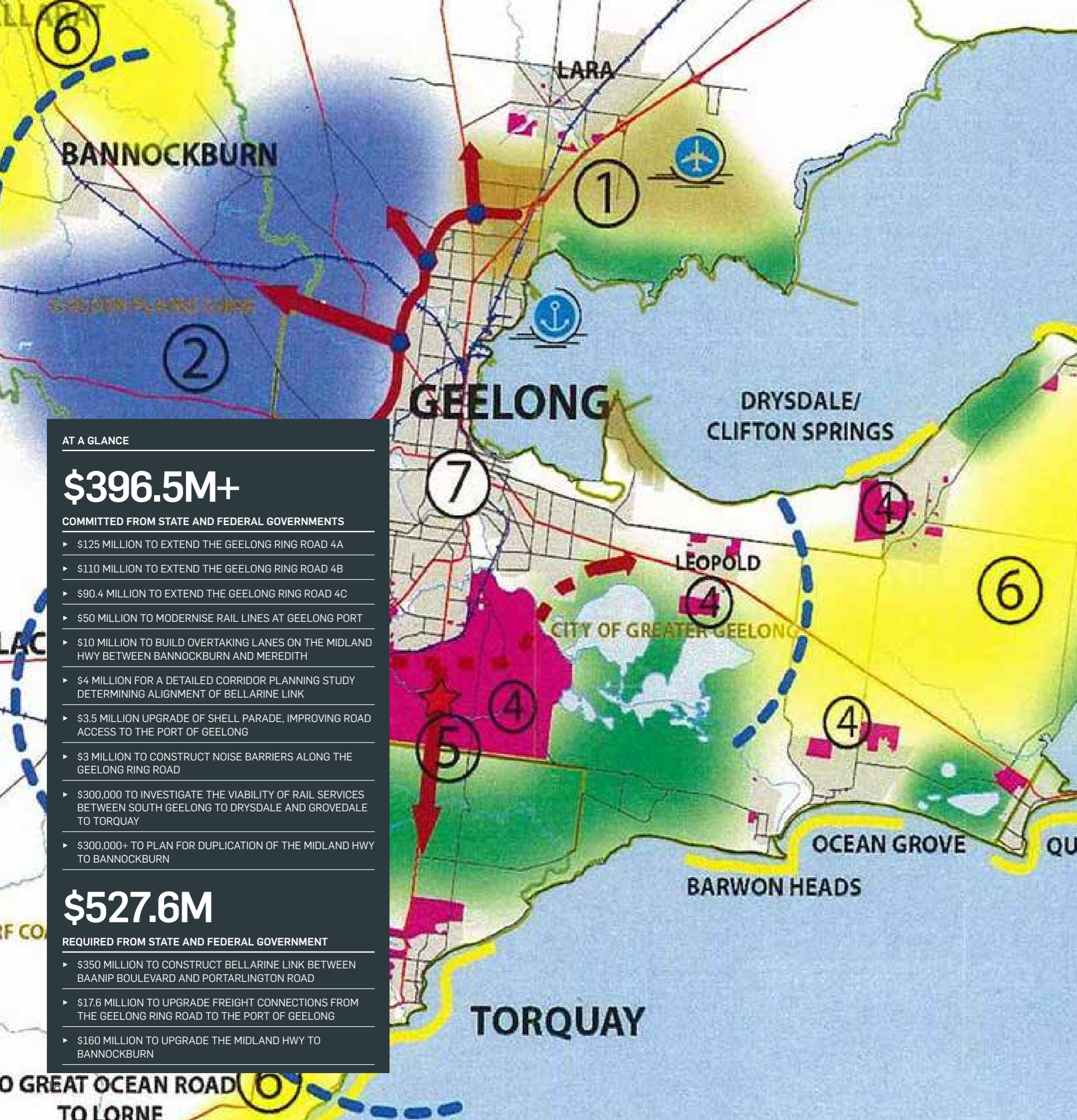
INFRASTRUCTURE ITEM	FUNDING SOURCE	FUNDING REMAINING
Bellarine Link (Stage 1, Baanip Blvd to Barwon Heads Rd)	State / Fed Govt	\$60 MILLION
Waurm Ponds Railway Station (Stage 2a, underpass and southern carpark)	State / Fed Govt	\$7 MILLION
Waurm Ponds Railway Station (Stage 2b, new platforms, augmented station facilities and additional carparking)	State / Fed Govt	\$68 MILLION
Duplication of rail line between South Geelong and Waurm Ponds	State / Fed Govt	TBC
Marshall Railway Station expansion (including amenities upgrade)	State / Fed Govt	\$20 MILLION
Rail spur line to Armstrong Creek Town Centre and construction of Armstrong Creek Town Centre Railway Station	State / Fed Govt	\$130 MILLION
Two pedestrian/cyclist overpasses btn Armstrong Creek and Grovedale	State / Fed Govt	\$6 MILLION
Armstrong Creek Growth Area bus network	State / Fed Govt	\$12.5 MILLION
TOTAL		\$303.5 MILLION

FIGURE 3 - PRECINCT LEVEL INFRASTRUCTURE ITEMS NEEDED TO DEVELOP COMMUNITIES

INFRASTRUCTURE ITEM	FUNDING SOURCE	FUNDING REMAINING
Primary School (6 at \$20m ea)	State / Fed Govt	\$120 MILLION
Secondary School (3 at \$35m ea)	State / Fed Govt	\$105 MILLION
Health Centres	Private / State Govt	\$19 MILLION
Armstrong Creek Town Centre Aquatic Centre	Council / State Govt / Fed Govt	\$25 MILLION
Armstrong Creek Town Centre Regional Library	State / Federal Govt	\$13 MILLION
Armstrong Creek Town Centre Indoor Regional High Balls Sports Facility	Council / State Govt / Fed Govt	\$13 MILLION
Armstrong Creek West Precinct Regional Tennis Complex (10-18 courts and pavilion with administration base)	Council / State Govt / Fed Govt	\$7.5 MILLION
TOTAL		\$302.5 MILLION



▶ CREATE SUSTAINABLE SETTLEMENTS



GEELONG RING ROAD CONNECTIONS TO THE BELLARINE PENINSULA, GEELONG PORT & MIDLAND HWY

MAXIMISE BENEFITS OF THE \$1 BILLION+ GEELONG RING ROAD INVESTMENT.

THE NEED

The state and federal governments have invested, and over coming years will continue to invest, significant funding to develop the Geelong Ring Road and Princes Hwy West. These are very important projects for the region both to cope with continued strong population growth and to capture benefits from economic development in the Barwon South West region of Victoria.

The G21 region is already the fastest growing region in Victoria. The opening of the Geelong Ring Road has intensified this by bringing many existing townships within ready commuting distance of Melbourne. When combined with generally lower land prices and the lifestyle benefits, this provides an attractive alternative to many who would otherwise settle on the fringes of Melbourne.

To capture the maximum value from this major investment, a number of road links need to be completed.

This is a Transport Pillar Project.

PROJECT CHAMPION

William Tieppo, General Manager City Services, City of Greater Geelong.

AT A GLANCE

\$396.5M+

COMMITTED FROM STATE AND FEDERAL GOVERNMENTS

- ▶ \$125 MILLION TO EXTEND THE GEELONG RING ROAD 4A
- ▶ \$110 MILLION TO EXTEND THE GEELONG RING ROAD 4B
- ▶ \$90.4 MILLION TO EXTEND THE GEELONG RING ROAD 4C
- ▶ \$50 MILLION TO MODERNISE RAIL LINES AT GEELONG PORT
- ▶ \$10 MILLION TO BUILD OVERTAKING LANES ON THE MIDLAND HWY BETWEEN BANNOCKBURN AND MEREDITH
- ▶ \$4 MILLION FOR A DETAILED CORRIDOR PLANNING STUDY DETERMINING ALIGNMENT OF BELLARINE LINK
- ▶ \$3.5 MILLION UPGRADE OF SHELL PARADE, IMPROVING ROAD ACCESS TO THE PORT OF GEELONG
- ▶ \$3 MILLION TO CONSTRUCT NOISE BARRIERS ALONG THE GEELONG RING ROAD
- ▶ \$300,000 TO INVESTIGATE THE VIABILITY OF RAIL SERVICES BETWEEN SOUTH GEELONG TO DRYSDALE AND GROVEDALE TO TORQUAY
- ▶ \$300,000+ TO PLAN FOR DUPLICATION OF THE MIDLAND HWY TO BANNOCKBURN

\$527.6M

REQUIRED FROM STATE AND FEDERAL GOVERNMENT

- ▶ \$350 MILLION TO CONSTRUCT BELLARINE LINK BETWEEN BAANIP BOULEVARD AND PORTARLINGTON ROAD
- ▶ \$17.6 MILLION TO UPGRADE FREIGHT CONNECTIONS FROM THE GEELONG RING ROAD TO THE PORT OF GEELONG
- ▶ \$160 MILLION TO UPGRADE THE MIDLAND HWY TO BANNOCKBURN

▶ CREATE SUSTAINABLE SETTLEMENTS

GEELONG RING ROAD CONNECTIONS TO THE BELLARINE PENINSULA, GEELONG PORT & MIDLAND HWY (CONT.)

PROJECT AIMS

To complete or develop key links from the Geelong Ring Road including:

CONSTRUCTING BELLARINE LINK (RING ROAD EXTENSION) TO THE BELLARINE PENINSULA

Development plans for Armstrong Creek define a corridor for the East-West connection linking Baanip Blvd to Barwon Heads Road. A detailed corridor planning study to determine the alignment between Barwon Heads Road and Portarlington is underway. Funding will be required to complete road construction.

UPGRADING FREIGHT CONNECTIONS FROM THE GEELONG RING ROAD TO THE PORT OF GEELONG

Heavy transports have embraced the Geelong Ring Road as their preferred route from western Victoria, through Geelong and onto Melbourne. The Port of Geelong is a key destination but connections from the Geelong Ring Road to the port are not of the required standard to properly support this traffic. These links need to be reviewed and upgraded urgently.

UPGRADING THE MIDLAND HWY TO BANNOCKBURN

The Economic and Land Use Impacts of the Geelong Ring Road study shows that centres close to the Geelong Ring Road will be a focus of population and industry growth. Bannockburn is growing rapidly and new land releases are in train to cope with demand. Safety upgrades have been implemented to cope with growing traffic and to improve connections between regional centres. Planning for the duplication of the Midland Hwy between Geelong and Bannockburn needs to be completed.

WHAT HAS BEEN COMMITTED

The Federal Government has committed:

- \$62.5 million for Geelong Ring Road Stage 4A, extending the Geelong Ring Road to Anglesea Road
- \$45 million for Geelong Ring Road Stage 4B, extending Anglesea Road to Princes Hwy West
- \$50 million for modernising the rail lines at Geelong Port
- \$300,000 to plan for duplication of the Midland Hwy to Bannockburn.

The State Government has committed:

- \$62.5 million for Geelong Ring Road Stage 4A, extending Geelong Ring Road to Anglesea Road
- \$65 million for Geelong Ring Road Stage 4B, extending Anglesea Road to Princes Hwy West
- \$90.4 million for Geelong Ring Road Stage 4C, connecting Geelong Ring Road to the Surf Coast Hwy
- \$10 million to build overtaking lanes on the Midland Hwy between Bannockburn and Meredith
- \$4 million for a detailed corridor planning study determining alignment of connection from Armstrong Creek to Portarlington Road
- \$3.5 million upgrade of Shell Parade, improving road access to the Port of Geelong
- \$3 million to construct noise barriers along the Geelong Ring Road
- \$300,000 to investigate the viability of rail services between South Geelong to Drysdale and Grovedale to Torquay
- funds to plan for duplication of the Midland Hwy to Bannockburn.

WHAT IS REQUIRED

CONSTRUCTING BELLARINE LINK (GEELONG RING ROAD EXTENSION) TO THE BELLARINE PENINSULA

A State Government commitment of:

- \$350 million for the construction of the Bellarine Link, connecting Baanip Boulevard to Portarlington Road.

UPGRADING FREIGHT CONNECTIONS FROM THE GEELONG RING ROAD TO THE PORT OF GEELONG

A State Government commitment of:

- \$17.6 million to complete duplication of the Bacchus Marsh Road between the Geelong Ring Road and Princes Highway. Actions include the construction of the Broderick Road ramps and the connection of the Geelong Ring Road Employment Precinct to the Geelong Port.

UPGRADING THE MIDLAND HWY TO BANNOCKBURN

A Federal Government commitment of:

- \$120-\$160 million for duplication of the Midland Hwy to Bannockburn.



AT A GLANCE

\$157.9M+

COMMITTED FROM STATE AND FEDERAL GOVERNMENT

- ▶ \$115 MILLION FOR A TRAIN STABLING AND MAINTENANCE YARD IN WAURN PONDS
- ▶ \$25.9 MILLION TO CONSTRUCT THE WAURN PONDS RAILWAY STATION
- ▶ \$10 MILLION TO BUILD A RAIL PASSING LOOP BETWEEN MARSHALL AND WARRNAMBOOL AND FUNDS TO RESTORE COLAC'S PASSING LOOP
- ▶ \$4 MILLION TO PLAN FOR RAILWAY DUPLICATION BETWEEN SOUTH GEELONG AND WAURN PONDS
- ▶ \$3 MILLION TO INVESTIGATE TRANSPORT OPTIONS FOR ARMSTRONG CREEK
- ▶ ADDITIONAL GEELONG-MELBOURNE V/LINE TRAIN SERVICES BETWEEN 9AM-3PM
- ▶ AN ADDITIONAL PASSENGER SERVICE TO WARRNAMBOOL (THROUGH GEELONG AND COLAC)
- ▶ STAGE 1 OF A MARSHALL RAILWAY STATION UPGRADE.

SUPPORT

REQUIRED FROM STATE GOVERNMENT

- ▶ DUPLICATION OF THE RAIL LINE FROM GEELONG RAILWAY STATION TO THE NEW WAURN PONDS RAILWAY STATION
- ▶ INCREASES IN RAIL SERVICE BETWEEN GEELONG AND COLAC/WARRNAMBOOL
- ▶ DESIGNATION OF A PUBLIC TRANSPORT CORRIDOR LINKING TORQUAY TO GEELONG.



REGIONAL RAIL CONNECTIONS

UPGRADES AND EXTENSIONS WITHIN THE G21 REGION NEED TO BE PLANNED AND EXECUTED TO MAXIMISE THE INVESTMENT OF THE REGIONAL RAIL LINK.

THE NEED

Following the development of the Regional Rail Link, regional rail upgrades and extensions across the G21 region need to be planned and executed to maximise the value of this investment. Continued strong population growth within the G21 region will only heighten this need.

This includes the construction of the Waurm Ponds Railway Station (completed), the duplication of the rail line between Geelong and Waurm Ponds Railway Stations, relocation of the rail yards away from the fringes of the Geelong CBD and the identification of a public transport corridor to allow a rail network to be extended to Torquay in the longer term.

Public transport service reliability in the G21 region also needs to be improved to provide certainty for commuters.

V/Line's peak services between Melbourne and Geelong are now scheduled at 10-15 minute intervals, with off-peak at 20 minute intervals.

It is now important to increase the frequency of the Geelong-Colac-Warrnambool train services, from the current five per day; one of which is a partial bus service.

This would improve accessibility across the G21 region, and provide greater opportunities for employment and post-secondary education.

Further increases would then be linked to increased usage.

This is a Transport Pillar Project.

PROJECT CHAMPION

William Tieppo, City of Greater Geelong.

▶ CREATE SUSTAINABLE SETTLEMENTS

REGIONAL RAIL CONNECTIONS (CONT.)

PROJECT AIMS

INCREASING THE FREQUENCY OF THE GEELONG TO WARRNAMBOOL RAIL PASSENGER SERVICE

The current level of rail passenger services between Geelong and Colac/Warrnambool are a barrier to the development of towns such as Colac and Winchelsea. Increasing the services to five services each direction per day will increase accessibility and provide opportunities for employment and post-secondary education for people in this region. Further increases would be linked to increased usage.

PARTIAL DUPLICATION OF RAIL LINE WAURN PONDS TO GEELONG

Constraints on the Geelong-Marshall rail line during peak periods have led to the need to duplicate.

Duplication of the rail line between Geelong Railway Station and Waurn Ponds Railway Station would involve the installation of a crossing loop between South Geelong and Marshall to allow trains to turn and a second platform at South Geelong Railway Station.

RAIL SERVICE IMPROVEMENTS

The relocation of the Geelong railyard (funded) is required to address issues associated with peak service commuter times south of Geelong that are currently limited by the single line underground tunnel through Geelong.

A designated public transport corridor to Torquay will allow the network to be extended, while continued upgrades of transport across the region is required.

WHAT HAS BEEN COMMITTED

The State Government has committed:

- \$115 million for a train stabling and maintenance yard in Waurn Ponds
- \$25.9 million to construct the Waurn Ponds Railway Station, with 200 parking spaces (completed)
- \$10 million to build a new rail passing loop between Marshall and Warrnambool and funds to restore Colac's passing loop
- \$4 million to plan for railway duplication between South Geelong and Waurn Ponds
- \$100 million in 2017-18 Budget towards railway duplication and associated station works between South Geelong and Waurn Ponds (see also Federal Government commitment)
- \$3 million to investigate transport options for Armstrong Creek
- Additional Geelong-Melbourne V/Line train services between 9am-3pm, with the Geelong service departing every 20 minutes (implemented)
- Additional passenger services to Warrnambool (through Geelong and Colac) (Partially Implemented)
- Stage 1 of a Marshall Railway Station upgrade, including 300 new car parking spaces (complete)
- Designation of a public transport corridor linking Torquay to Geelong, committed in 2017-18 State Budget.

The Federal Government has committed:

- \$100 million in the 2017-18 Budget towards duplication of the rail line from Geelong to Waurn Ponds stations. Work to include additional platforms at South Geelong, Marshall and Waurn Ponds stations.

WHAT IS REQUIRED

- An increase in rail service between Geelong and Colac/Warrnambool from four services a day to a minimum of five return services per day (\$100 million allocated in 2017-18 State Budget for line upgrading will, when complete, allow increase of services).





ENGAGE, CONNECT AND UNITE THE PEOPLE OF THE REGION TO BUILD A FRAMEWORK FOR EQUITABLE ACCESS TO THE INTERNATIONALLY RECOGNISED BASIC PREREQUISITES OF HEALTH. FURTHER DEVELOP THE REGION'S ACCESS TO AND REPUTATION FOR ARTS, CULTURE, LEARNING, RECREATION AND DIVERSITY TO CREATE AN ECONOMICALLY PRODUCTIVE, SOCIALLY VIABLE AND ECOLOGICALLY SUSTAINABLE FUTURE.

- ▶ BUILD STRONG AND SAFE COMMUNITIES
- ▶ ENCOURAGE HEALTHY, ACTIVE, LEARNING LIFESTYLES
- ▶ INCREASE APPRECIATION OF DIVERSITY, ARTS AND CULTURE
- ▶ IMPROVE ACCESS TO SERVICES, INFRASTRUCTURE, EDUCATION AND HOUSING
- ▶ ADDRESS DISADVANTAGE

DIRECTION 3: STRENGTHEN OUR COMMUNITIES

AT A GLANCE

\$120M

COMMITTED FROM STATE AND FEDERAL GOVERNMENTS

- ▶ \$33.3 MILLION TOWARDS NORTHERN BAY COLLEGE REGENERATION
- ▶ \$30 MILLION TOWARDS THE NEW NORLANE INITIATIVE HOUSING PROJECT
- ▶ \$28.1 MILLION TOWARDS BARWON HEALTH NORTH
- ▶ \$1.1 MILLION TO DEVELOP AND IMPLEMENT THE G21 REGION OPPORTUNITIES FOR WORK (GROW) PROJECT
- ▶ \$725,000 TOWARDS STEAD PARK MASTER PLAN IMPLEMENTATION
- ▶ \$650,000 TO IMPLEMENT A REGIONAL SOCCER SYNTHETIC PITCH AT CORIO LEISURETIME CENTRE
- ▶ \$12.3 MILLION TOWARDS OTHER SERVICES AND SOCIAL INFRASTRUCTURE IN CORIO AND NORLANE
- ▶ \$5.4 MILLION FOR BLUEWATER FITNESS CENTRE STADIUM REDEVELOPMENT
- ▶ \$3.1 MILLION TOWARDS CENTRAL RESERVE MASTER PLAN IMPLEMENTATION
- ▶ \$620,000 TO SUPPORT A DEMAND LED EMPLOYMENT MODEL IN COLAC
- ▶ \$2.1 MILLION TOWARDS OTHER SERVICES AND SOCIAL INFRASTRUCTURE IN COLAC
- ▶ \$755,000 TOP SUPPORT WHITTINGTON WORKS' DEMAND LED EMPLOYMENT MODEL
- ▶ \$1.4 MILLION TOWARDS OTHER SERVICES AND SOCIAL INFRASTRUCTURE IN WHITTINGTON
- ▶ \$1.1 MILLION TOWARDS SERVICES AND SOCIAL INFRASTRUCTURE IN MEREDITH

\$78.8M

REQUIRED FROM STATE AND FEDERAL GOVERNMENT

- ▶ \$48 MILLION TOWARDS NORTHERN ARC MASTER PLAN IMPLEMENTATION
- ▶ \$19.7 MILLION FOR NORTHERN BAY COLLEGE REGENERATION PROJECT
- ▶ \$7.4 MILLION TOWARDS STEAD PARK MASTER PLAN IMPLEMENTATION
- ▶ \$3 MILLION TO IMPLEMENT THE GROW STRATEGIC PLAN
- ▶ \$650,000 TO IMPLEMENT CENTRAL RESERVE MASTER PLAN IN COLAC.

ADDRESSING DISADVANTAGE

AN INTEGRATED APPROACH TO ADDRESSING UNDERLYING CAUSES NOT JUST THE SYMPTOMS.

THE NEED

Across the G21 region there is significant disparity between advantaged and disadvantaged groups. There are target areas with very high levels of relative socio-economic disadvantage, as a region we are below the Victorian average on some key critical indicators:

- There is a high proportion of work in low paid and lower skilled industries and occupations.
- There is a lower level of year 12 completion and university qualifications.
- There is a high rate of part time work (especially women).

Within certain areas of the G21 region, families are experiencing significant poverty, which escalates the adverse impacts of poor mental and physical health, increased violence and crime, lower education outcomes and joblessness. Target areas include Corio, Norlane, Whittington and Colac. This affects not only the under resourced communities, but the whole of the G21 region.

Managing this requires us to address not just the symptoms of disadvantage, but the fundamental causes. These include access to quality educational opportunities from early childhood, better access to services that will improve health and wellbeing outcomes, and encompasses issues such as public transport and affordable housing.

This is a long-term and severe problem and ongoing funding is required.

This is a Health & Wellbeing Pillar Project.

PROJECT CHAMPION

Lenny Jenner, Chief Executive Officer, Borough of Queenscliffe.

▶ **STRENGTHEN OUR COMMUNITIES**

ADDRESSING DISADVANTAGE (CONT.)

PROJECT AIMS

G21 Region Opportunities for Work (GROW) is based on significant international evidence that the best way to reduce areas of persistent disadvantage in a community is to reduce unemployment rates in those areas.

GROW will therefore bring together philanthropic, business, government and community organisations across the G21 region with that single objective — creating job opportunities specifically benefiting the most disadvantaged in our community.

GROW will create new job opportunities in areas within the region which have the highest levels of joblessness and persistent disadvantage. It will do this by targeting two significant means of job growth - procurement and investment.

GROW will support public and private sectors to direct their routine spend on local suppliers and products, creating new jobs which can potentially employ people from target areas.

It will also encourage investment in SME's, allowing them to begin or expand operations within targeted areas, with a view to local job creation.

And it will use 'demand-led brokerage' to link jobs and job seekers, providing incentives for the employment of suitably trained people from targeted areas.

GROW will focus on target areas in the G21 region with the highest levels of unemployment. Colac, Corio/ Norlane and Whittington will be the initial focus; where unemployment is at double-digit levels, and well above regional and state averages.

Funding is also required across targeted areas in the G21 region to implement strategies that:

- regenerate large areas currently dominated by social housing
- restructure educational facilities to increase attendance and engagement
- improve access to education facilities and employment by targeting inhibitors such as childcare availability and public transport access
- revamp and expand health and wellbeing facilities and programs to target the high incidence of issues such as diabetes, mental health and dental problems.

WHAT HAS BEEN COMMITTED

CORIO AND NORLANE

State and Federal Governments have committed:

- \$106.2 million towards services and social infrastructure in Corio and Norlane, including:
 - \$33.3 million towards the Northern Bay College regeneration
 - \$30 million towards the \$80m New Norlane initiative, a housing project to provide 320 new public and affordable private homes in Norlane
 - \$28.1 million for Barwon Health North, an urgent care centre and co-location of GP services (Northern ARC Stage 1)
 - \$1.1 million to develop and implement the G21 Region Opportunities for Work (GROW) project
 - \$725,000 towards Stead Park Master Plan implementation
 - \$650,000 to implement a Regional Soccer Synthetic Pitch at Corio Leisuretime Centre.

WHITTINGTON

State and Federal Governments have committed:

- \$2.2 million towards services and social infrastructure in Whittington, including:
 - \$755,000 to support Whittington Works' demand-led employment model.

COLAC

State and Federal Governments have committed:

- \$11.2 million towards services and social infrastructure in Colac, including:
 - \$5.4 million for the Bluewater Fitness Centre Stadium Redevelopment (Opened March 2017)
 - \$3.1 million towards the Central Reserve Master Plan implementation (Upgrades opened April 2017)
 - \$620,000 to support a demand led employment model.

MEREDITH

The Federal Government has committed:

- \$1.1 million towards services and social infrastructure in Meredith.



WHAT IS REQUIRED

GROW STRATEGIC PLAN IMPLEMENTATION

CRITICAL PROGRAM	FUNDING REQUIRED
GROW Strategic Plan implementation over 10 years	\$3 MILLION
TOTAL	\$3 MILLION

COLAC

CRITICAL INFRASTRUCTURE ITEM	FUNDING REQUIRED
Central Reserve Master Plan implementation	\$650,000
TOTAL	\$650,000

CORIO AND NORLANE

CRITICAL INFRASTRUCTURE ITEM	FEDERAL GOVT	STATE GOVT	PROJECT COST
Northern Bay College regeneration		\$19.7 MILLION	\$19.7 MILLION
Stead Park Master Plan implementation		\$7.4 MILLION	\$7.4 MILLION
Northern ARC Stage 2 - Aquatic Health & Wellbeing Centre	\$10 MILLION	\$20 MILLION	\$30 MILLION
Northern ARC Stage 3 - Library, Community & Multipurpose spaces (incl. work on the public realm)	\$6 MILLION	\$12 MILLION	\$18 MILLION
TOTAL	\$16 MILLION	\$59.1 MILLION	\$75.1 MILLION

► STRENGTHEN OUR COMMUNITIES

AT A GLANCE

\$12.2M

COMMITTED FROM STATE & FEDERAL GOVERNMENTS

- ▶ \$5.5 MILLION TO DELIVER EARLY STAGES OF THE ACTION PLAN.
- ▶ \$3 MILLION TO DELIVER THE FIRST STAGE OF THE MALOP STREET GREEN SPINE AND LANEWAY UPGRADES.
- ▶ \$2.65 MILLION IN INCENTIVES FOR DEAKIN UNIVERSITY'S AFFORDABLE STUDENT HOUSING IN THE T&G BUILDING.
- ▶ \$850,000 TOWARDS THE REDEVELOPMENT OF CENTRAL GEELONG'S ICONIC T&G BUILDING.
- ▶ \$85,000 TOWARDS A FEASIBILITY STUDY INVESTIGATING THE DEVELOPMENT OF A MINERAL SPRINGS AND SPA.
- ▶ \$70,000 TO INVESTIGATE THE DEVELOPMENT OF KEY GOVERNMENT SITES AND ASSETS.

\$127.1+M

REQUIRED FROM STATE GOVERNMENT

- ▶ \$10 MILLION TO KICK START KEY SHORT-TERM PROJECTS WITHIN THE ACTION PLAN.
- ▶ \$17 MILLION TO DELIVER STAGES TWO AND THREE OF THE MALOP STREET GREEN SPINE.
- ▶ FUNDING TO DELIVER STREETScape UPGRADES AND GREENING STRATEGY PROJECTS THAT REALISE THE 'CITY IN A PARK' VISION.
- ▶ \$80-100 MILLION TO FACILITATE HEAVY VEHICLE AND THROUGH TRAFFIC BYPASSING THE CBD.
- ▶ SUPPORT FOR TRANSPORT NETWORK IMPROVEMENTS THAT INCREASE AMENITY OF STREETS WITHIN THE CBD.
- ▶ REDEVELOPMENT OF THE GEELONG RAILWAY STATION TO CREATE AN ATTRACTIVE KEY ENTRANCE TO THE CBD.
- ▶ \$100,000 TO SUPPORT DEVELOPMENT OF A CENTRAL GEELONG BUSINESS ATTRACTION PROSPECTUS AND TOURIST ACCOMMODATION INVESTMENT STRATEGY.
- ▶ FUNDING TO CREATE A NEW PUBLIC SPACE AS THE CITY HEART.
- ▶ FUNDING FOR WATER/SEWERAGE AND ELECTRICITY/GAS UPGRADES TO SUPPORT A POPULATION RISE IN CENTRAL GEELONG.



CENTRAL GEELONG REVITALISATION

CREATING A SMART, VIBRANT, THRIVING AND LIVEABLE CITY CENTRE.

THE NEED

Central Geelong is the G21 region's primary centre of business, retail, arts, culture, education, health and institutional activity. Like many cities of its size, Central Geelong is experiencing challenges as it transitions from a traditional 'central business district' function to a more diverse economic, social, residential and cultural centre.

The revitalisation of Central Geelong as a strong, vibrant and thriving mixed-use centre is important for Geelong, the region and to the future growth of Victoria as the State's second city. Central Geelong needs to redefine itself, attract investment, deliver employment opportunities and provide a lifestyle that makes people want to live in the city centre and visit often.

Affecting change takes time. There are no quick or easy fixes, no simple solutions, rather a range of actions and measures that once implemented, will turn Central Geelong into a vibrant, world-class city.

The *Central Geelong Action Plan* developed by the Central Geelong Task Force, sets a direction for future priorities and investment. The City of Greater Geelong is dedicated to managing its resources to create an environment that will stimulate investment. However, the success of the plan requires support and commitment from businesses, land owners, major institutions, government and the community to build on the strengths that already exist.

Delivering world-class precincts is a key outcome of the *Central Geelong Action Plan*, including the G21 Priority Projects of redeveloping the Geelong Cultural Precinct and delivering a new Geelong Convention and Exhibition Centre.

This is a Planning & Services Pillar Project.

PROJECT CHAMPION

Kelvin Spiller, Chief Executive Officer, City of Greater Geelong.

▶ **STRENGTHEN OUR COMMUNITIES**

CENTRAL GEELONG REVITALISATION (CONT.)

PROJECT AIMS

The *Central Geelong Action Plan* is a 15-year program of priority actions to revitalise Central Geelong. The Action Plan aims to provide great infrastructure and opportunities for smart investment, making it a better place for people to live, work, learn and play.

Ten priority actions are imperative to creating a thriving Central Geelong:

- Stimulate more investment and realise the development potential of under utilised land.
- Increase the number of people living in the city making it a safer, more vibrant and mixed use area.
- Better use government land assets as a catalyst for leveraging investment and activity.
- Create an integrated, attractive and well-designed pedestrian and cycling network.
- Facilitate convenient, frequent and reliable access to key destinations via a city loop bus service.
- Create a vibrant, lively shopping, alfresco dining and event space.
- Green Central Geelong, developing a network of grand boulevards, green spines and green spaces.
- Promote residential housing, services and facilities for students and staff close to education facilities
- Capitalise on Geelong's premier health services for jobs and investment in a more cohesive precinct
- Build on the annual calendar of events to attract more people and increased investment in tourism.

Planning continues to progress these priority actions. For example, the 'City in a Park' vision identifies a series of projects to improve streets and key public spaces in the city centre to implement the 'Greening Geelong' initiative.

WHAT HAS BEEN COMMITTED

The Federal Government has committed:

- \$2.65 million in incentives for Deakin University's affordable student housing in the T&G building.

The State Government has committed:

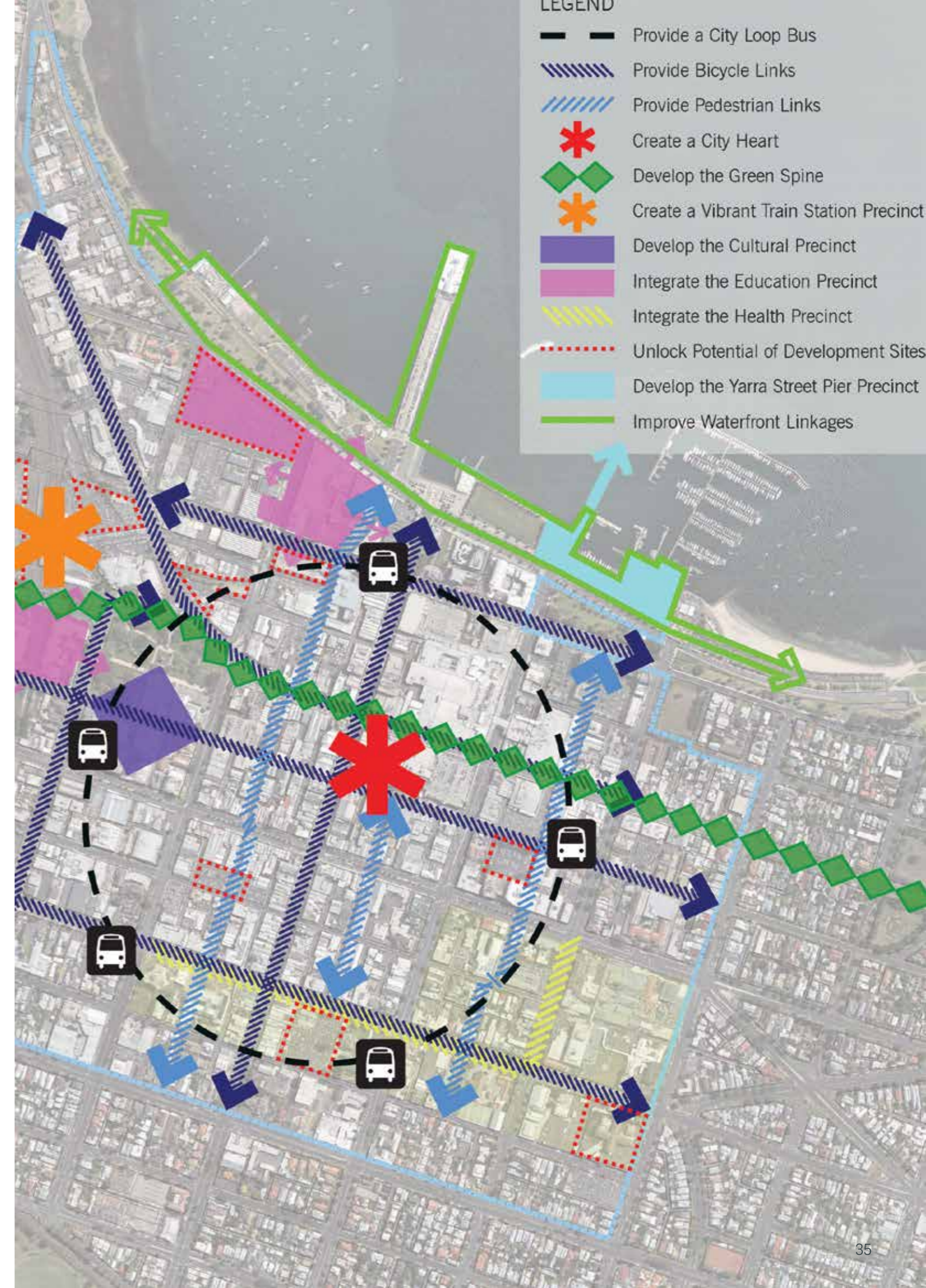
- \$5.5 million to deliver early stages of the Action Plan; outdoor spaces and streetscapes will be improved to unlock investment and drive economic activity in central Geelong

- \$3 million to deliver the first stage of the Malop Street green spine and laneway upgrades
- \$15 million in the 2017-18 Budget for Action Plan items, including stormwater infrastructure at Johnstone Park, new laneway connections, planning to expand the green spine and bus infrastructure.
- \$850,000 towards the redevelopment of Central Geelong's iconic T&G building
- \$85,000 towards a feasibility study investigating the development of a Mineral Springs and Spa
- \$70,000 to investigate the development of key government sites and assets.

WHAT IS REQUIRED

A Government commitment of:

- \$10 million to kick start key short-term projects within the Action Plan.
- \$17 million to deliver stages two and three of the Malop Street Green Spine.
- funding to deliver streetscape upgrades and greening strategy projects realising the 'City in a Park' vision.
- \$80-100 million to facilitate heavy vehicle and through traffic bypassing the CBD. Immediate priorities are:
 - \$10 million to upgrade the Boundary Road/ Fellmongers Road intersection
 - \$8 million to upgrade three key intersections on Latrobe Terrace; Ryrie Street, McKillop Street and Fyans Street.
- support for transport network improvements that increase amenity of streets within the CBD.
- redevelopment of the Geelong Railway Station to create an attractive key entrance to the CBD.
- \$100,000 to support development of a Central Geelong business attraction prospectus and tourist accommodation investment strategy.
- funding to create a new public space as City Heart.
- funding for water/sewerage and electricity/gas upgrades to support a population rise in Central Geelong.



► STRENGTHEN OUR COMMUNITIES

AT A GLANCE

\$65.6M

COMMITTED FROM STATE AND FEDERAL GOVERNMENTS

- ▶ \$7.9 MILLION TO DEVELOP THE FINAL BUSINESS CASES FOR GPAC AND THE LIBRARY HERITAGE CENTRE TOGETHER WITH THE OLD COURTHOUSE BUILDING REFURBISHMENT
- ▶ \$30 MILLION TOWARDS GPAC STAGE 2 REDEVELOPMENT
- ▶ \$3 MILLION TOWARDS GPAC'S PLAYHOUSE REFURBISHMENT (STAGE 1)
- ▶ \$6.9 MILLION TO EXPAND AND IMPROVE AMENITY AND ACCESS AT GPAC
- ▶ \$2.7 MILLION FOR CRITICAL MAINTENANCE WORKS AT GPAC
- ▶ \$25 MILLION TOWARDS A NEW GEELONG LIBRARY AND HERITAGE CENTRE ON THE EXISTING SITE
- ▶ \$100,000 TO DEVELOP A BUSINESS PLAN FOR THE GEELONG ART GALLERY UPGRADE.

\$200M

REQUIRED FROM STATE AND FEDERAL GOVERNMENTS

- ▶ \$160 MILLION FOR GPAC STAGE 3 REDEVELOPMENT
- ▶ \$40 MILLION TO REDEVELOP THE GEELONG GALLERY. INVESTMENT WILL ALSO BE REQUIRED BY COGG AND THE GEELONG GALLERY.



GEELONG CULTURAL PRECINCT

ROBUST POPULATION GROWTH AND AGEING INFRASTRUCTURE IS CREATING A STRONG DEMAND FOR MODERN ARTS AND CULTURAL FACILITIES IN THE G21 REGION.

THE NEED

The G21 region's cultural assets are limited, ageing and used to capacity. Despite this, attendance in the Cultural Precinct has reached over half a million visitors annually. With predictions of strong regional population growth, expanding and updating these cultural assets remains a key issue.

The implementation of the *Cultural Precinct Master Plan* has already commenced. Refurbishment of the Old Courthouse Building was completed in 2011 and the Geelong Library & Heritage Centre opened in late 2015. Stage 2 of the Geelong Performing Arts Centre (GPAC) redevelopment will commence in 2016. The *Geelong Gallery Business Case (2015)* was the final major planning stage of the Cultural Precinct.

The expansion of the Geelong Gallery, Stage 3 of the GPAC redevelopment and work on the public realm still requires attention.

The Geelong Gallery has experienced strong growth in the past ten years, with visitation numbers doubling during this period. It currently attracts between 60,000 and 70,000 visitors annually, however, this is anticipated to triple to around 200,000 with expanded and upgraded facilities.

The gallery has been identified as having the greatest potential as an arts/cultural tourism attractor for Geelong and the region. However, its capacity to contribute to the region's economic and cultural renewal is compromised by its current physical limitations of space and layout, which severely constrains its ability to properly showcase the valuable permanent collection and to attract or develop popular, large scale touring exhibitions.

Following redevelopment, the gallery will more than double its current footprint, gaining an extra 3200m².

Average annual attendances at GPAC reach 225,000, with 1 in 2 households in Geelong and 1 in 3 of the households in the G21 region having attended GPAC in the past three years. Yet despite strong community engagement in this arts facility, GPAC's technical infrastructure has not kept pace with industry standards. The building is not compliant, particularly in relation to disability access, nor does it meet current industry standards.

The new Geelong Library & Heritage Centre is providing clear evidence of the impact redevelopment can have on the precinct. In the first 12 weeks after opening the library tripled its patronage prior to demolition, experiencing 130,000 visitors. During this period the Geelong Gallery also experienced increased visitation in the order of 35% which reflects keen interest in the Gallery's new exhibition space and flow-on from increased pedestrian traffic in the precinct.

It has been projected that proposed government investment would be repaid in five years, with a redeveloped Arts Centre and Gallery contributing over \$30 million to Gross Regional Product every year.

This vibrant arts and culture precinct will create an inclusive city, improving the livability and lifestyle of the region. It will help attract emerging industries and their staff to the G21 region, which is particularly important as the G21 region economy evolves from a heavy manufacturing and agriculture base to one that focuses on knowledge based and service industries.

The redevelopment of these two facilities within the Cultural Precinct is a critical element of the Central Geelong Action Plan, which will regenerate of Geelong's Central Business District.

This is an Arts and Culture Pillar Project.

PROJECT CHAMPION

Kelvin Spiller, Chief Executive Officer, City of Greater Geelong.

▶ STRENGTHEN OUR COMMUNITIES

GEELONG CULTURAL PRECINCT

PROJECT AIMS

To create a regional hub for arts and culture activities and businesses comprising:

- refurbishment of the Old Courthouse Building (completed)
- an integrated Geelong Library & Heritage Centre (completed)
- an expanded and refurbished GPAC (Stage 2 funded, Stage 3 OUTSTANDING)
- expansion of the Geelong Gallery (Business Case funded, development OUTSTANDING)
- work on the public realm in Lt Malop Street and Johnstone Park including public art and improved links to the train station and waterfront (OUTSTANDING).

- improve access to and participation in the arts. GPAC audiences are projected to increase over 80 per cent with an additional 200,000 seats available each year, while a redeveloped Geelong Gallery has the potential to attract up to 200,000 visitors annually
- provide broader programming options, with a 122 per cent increase in events at GPAC to around 4000 annually
- create a unique and distinctive artistic facility that will attract both domestic and international tourists.

WHAT HAS BEEN COMMITTED

The State Government has committed:

- \$7.9 million to develop the final Business Cases for GPAC and the Library Heritage Centre together with the Old Courthouse Building refurbishment
- \$30 million towards GPAC Stage 2 redevelopment
- \$6.9 million to expand and improve amenity and access at GPAC
- \$3 million towards GPAC's Playhouse refurbishment (Stage 1)
- \$2.65 million for critical maintenance works at GPAC
- \$15 million towards a new Geelong Library and Heritage Centre
- \$100,000 to develop a business plan for the Geelong Art Gallery redevelopment.

The Federal Government has committed:

- \$10 million towards a new Geelong Library & Heritage Centre.

BENEFITS FOR VICTORIA AND THE G21 REGION

The Geelong Cultural Precinct will:

- contribute over \$30 million to Gross Regional Product annually and increase local output by more than \$65 million annually (direct and indirect impacts)
- create an estimated 390 local ongoing jobs after completion and support almost 700 Victorian jobs during the construction phase (direct and indirect jobs).
- enhance the livability of the G21 region, providing a cultural imperative for business and potential residents to relocate to the region

WHAT IS REQUIRED

A State and Federal Government commitment of:

- \$40 million to redevelop the Geelong Gallery. Investment will also be required by CoGG and the Geelong Gallery.
- \$160 million to redevelop GPAC:

CRITICAL INFRASTRUCTURE ITEM	TIMEFRAME	FEDERAL GOVERNMENT	STATE GOVERNMENT	TOTAL
GPAC redevelopment	2016-2020	\$50 MILLION	\$110 MILLION	\$160 MILLION



► STRENGTHEN OUR COMMUNITIES



GEELONG SECONDARY SCHOOLS AND COMMUNITY DIGITAL LEARNING HUB

WORLD CLASS, HIGH-SPEED INTERNET PRODUCING LEADERS IN A DIGITAL AGE

THE NEED

There is an urgent need to increase internet capacity to improve access to digital learning and cloud-based resources that meet the contemporary learning demands of students and teachers in the G21 region.

The G21 region suffers inadequate access to a high-speed internet platform. It does not have the capacity to meet the needs of local schools, which are endeavouring to provide digital access to 500+ users per site. Speed is slow and bandwidth so limited that delivery of a digital learning agenda is impossible. Many essential education resources on the World Wide Web are inaccessible to students.

This limits the standard of education that can be provided to students, despite the best efforts of teachers. Modern teaching methods require sophisticated and high capacity digital connectivity; within schools, between schools and with the broader Internet community.

Only 60.6% of young people (20-24 years old) in the G21 region have completed year 12 or equivalent, compared to an average of nearly 78% in metropolitan Melbourne. It is time to redress the disadvantage of regional schools relative to their city counterparts.

A world class digital learning hub will provide students and the community access to learning content from Australia's leading education providers. It will deliver greater access to digital resources provided by museums, galleries, universities and businesses.

It will also offer more flexible learning options by providing access to video-conferencing teaching and will easily allow students to study subjects offered at other schools (often necessary because low numbers don't justify subject delivery at individual schools).

The National Broadband Network (NBN) Co was due to commence its Geelong rollout in late 2013. Due to the restructure of NBN Co, the NBN has only been implemented in greenfield sites such as Armstrong Creek, Warralily and small pockets of new residential development around Geelong and district. Offering speeds up to 100Mbs as a shared connection with other neighbourhood premises, the NBN will not meet the demands of secondary schools in the G21 region, where the number of users can exceed 1000+.

This is an Education and Training Pillar Project.

► **STRENGTHEN OUR COMMUNITIES**

AT A GLANCE

\$4.7M

REQUIRED FROM STATE AND FEDERAL GOVERNMENTS

► \$4.7 MILLION TO DELIVER A HIGH-SPEED LEARNING PLATFORM TO EACH OF OUR PARTNER LOCATIONS.

GEELONG SECONDARY SCHOOLS AND COMMUNITY DIGITAL LEARNING HUB (CONT.)

PROJECT CHAMPION

John Mullins, Project Lead, Geelong Secondary Schools and Community (GSSC) Digital Learning Hub

PROJECT AIMS

The Geelong Secondary Schools and Community (GSSC) Digital Learning Hub will deliver world class, high-speed internet access through Australia's Academic and Research Network (AARNet), enabling students, teachers and community in the G21 region to become leaders in a digital age.

The GSSC Digital Learning Hub partners G21 region secondary schools (Catholic, Independent & Government) with Deakin University, The Gordon and Geelong Regional Library Corporation to share infrastructure and resources that will expand digital access to the community.

The project can strategically realign the G21 region from its traditional manufacturing centre to be a leader in digital learning. It will provide a high-speed platform for innovation, education, research, collaboration and e-commerce. This will improve future education prospects for these students and increase their employability.

AARNet (a not-for-profit company owned by Australian universities and the CSIRO), is dedicated to supporting the progression of research and education. With a world-class high-speed 100 gigabit per second (Gbs) fibre optic network around Australia, and a 40Gbs fibre optic link to international destinations and the global network of research networks, AARNet connects Australian researchers and educators to the internet, each other, and to their peers worldwide.

AARNet will provide each partner with a high-speed connection of 1Gbs to meet the learning requirements of their students, teachers and wider community. No other current or future telecommunication provider (including the NBN Co) can provide, or are designed to deliver, the learning content to the number of users that each of the GSSC Digital Learning Hub partners support at their individual sites.

BENEFITS FOR VICTORIA AND THE G21 REGION

The GSSC Digital Learning Hub will:

- ensure sustainable access to a high-speed digital learning platform for the next 10-15 years.
- provide a world-class digital learning platform with adequate capacity (1Gbs +) to meet contemporary education needs.
- improve student learning outcomes and school engagement across the education sectors and wider community (40,000+ secondary & primary students, 27,000+ tertiary students and 240,000+ households).
- allow students, teachers and academic staff to seamlessly move between partner sites via eduroam, accessing individualised learning opportunities and content rich digital resources.
- reshape the G21 region's economy by creating a digital learning hub accessible to the business community, primarily through the Geelong Library.
- provide increased community digital access for residents in the G21 region to participate in online learning, e-commerce and government programs.
- increase the profile of the G21 region by being at the forefront of digital learning and the digital economy.

WHAT IS REQUIRED

A State and Federal Government commitment of:

- \$4.7 million to deliver a high-speed learning platform to each of our partner locations.

Each project partner is committed to an initial infrastructure investment and a recurrent ongoing subscription cost to connect to AARNet.





REGIONAL MOTOCROSS FACILITY

A CONTAINED, SAFE AND CONTROLLED FACILITY FOR RIDER EDUCATION, ACTIVITIES AND EVENTS.

THE NEED

There is a strong need for a motocross venue in the G21 region to provide a contained, safe and controlled facility for rider education, activities and events.

McAdam Park motocross track, home of Geelong Motocross Club and the Sporting Motorcycle Club, closed in December 2015 following a four-year dispute between riders and residents. The settlement between Barrabool Rural Protection Group, Barrabool Hills Community Association and landowner Motorcycling Australia leaves the future of recreational motorcycling in the G21 region uncertain, with no current alternative proposed.

Without a safe, purpose built facility operating in a controlled environment that can be managed in a socially responsible and viable way, it is inevitable that riders will resort to public roads, parklands and other community recreational areas to experience their motocross interests. This is a significant safety risk, and is likely to have devastating consequences to the local environment.

This is a Sport and Recreation Pillar Project.

PROJECT CHAMPION

Linda Quinn, General Manager Community Life,
City of Greater Geelong

AT A GLANCE

\$Commitment

REQUIRED FROM STATE FEDERAL GOVERNMENT

- ▶ COMMITMENT TO LEAD A FORMAL WORKING GROUP (THAT INCLUDES G21, RELEVANT ADJOINING REGIONS AND SPORT REPRESENTATIVES) TO FURTHER INVESTIGATE PROSPECTIVE SITES.
- ▶ TO DEVELOP A PLAN TO SOURCE THE SIGNIFICANT FUNDS REQUIRED TO PURCHASE LAND AND DEVELOP AN INTER-REGIONAL MOTOCROSS OR MOTOR SPORT FACILITY.

▶ **STRENGTHEN OUR COMMUNITIES**

REGIONAL MOTOCROSS FACILITY (CONT.)

PROJECT AIMS

The project aims to create a state-of-the-art regional facility that provides a safe and structured environment for people to explore their love of motorcycles and motocross.

An extensive *G21 Motocross Land Suitability Assessment* was completed in late 2016. The assessment considered the functional needs of motocross riders and the land-use requirements for a regional facility. A number of potential properties were identified, with the best prospects in private ownership.

Motocross tracks require a significant buffer distance to any residential or future growth areas, making it difficult to locate suitable sites.

Sites recommended for further investigation ranged in value from \$800,000 to \$2.5 million to purchase. Substantial funds in addition to a purchase price would be needed to conduct further site-specific assessments and to develop facility infrastructure.

This puts the funding of a regional facility beyond the reach of the currently available budget of local municipalities and sporting clubs.

Councils bordering the G21 region, including Ballarat and Wyndham, are known to be experiencing similar difficulties in locating motor sport facilities.

Therefore, G21 believes the placement and funding of a facility now demands a joint approach including neighbouring regions, best led by the State Government.

BENEFITS FOR VICTORIA AND THE G21 REGION

A Regional Motocross Facility will:

- provide a safe and legal riding area for up to 1,000 displaced riders in the G21 region.
- provide best track conditions in a controlled supervised environment. This will provide an alternative to dangerous riding and antisocial behaviour on public roads, residential areas, community recreation areas and parklands.
- provide job creation opportunities through the construction, maintenance and ongoing management of the regional centre.
- facilitate direct and indirect economic benefit connected with the procurement of national, state and regional events.
- provide a social and recreational outlet to a under-resourced market; including the high risk youth market and often socially displaced retired men aged 55 and over.
- provides valuable accredited coaching and training development opportunities for all ages and abilities.
- help reduce accidents and injuries within the region through safety education programs.

WHAT IS REQUIRED

A State Government commitment to:

- lead a formal working group to include G21 and relevant adjoining regions (or adjoining local government areas) and sport representatives, to further investigate prospective sites, and
- develop a plan to source the significant funds required to purchase land and develop an inter-regional motocross or motor sport facility.





BRING TOGETHER PUBLIC AND PRIVATE SECTOR ORGANISATIONS TO ENSURE ONGOING LINKS BETWEEN THE DEMANDS OF THE ECONOMY AND THE CAPACITY OF THE WORKFORCE. THIS INCLUDES SUPPORT FOR TECHNOLOGY TRANSFER AND INDUSTRY TRANSITION WITH INTERNATIONALLY RECOGNISED TELECOMMUNICATIONS AND TECHNOLOGY CAPABILITIES.

- ▶ RESPOND TO GLOBAL COMPETITION
- ▶ IMPROVE INDUSTRY EFFICIENCY, INNOVATION AND COMMERCIALISATION
- ▶ REDUCE SKILLS GAPS AND SHORTAGES
- ▶ IMPROVE THE OPERATING ENVIRONMENT FOR BUSINESS



AT A GLANCE

\$15.9M+

COMMITTED FROM FEDERAL GOVERNMENT

- ▶ AN AMENDMENT TO AVALON AIRPORT'S LEASE PROVIDES THE AIRPORT WITH INTERNATIONAL STATUS
- ▶ FUNDING FOR A NEW INTERNATIONAL TERMINAL UPON AGREEMENT WITH AN INTERNATIONAL AIRLINE
- ▶ APPROVAL OF THE AVALON AIRPORT MASTER PLAN
- ▶ RE-CLASSIFICATION TO MAKE AVALON AIRPORT ELIGIBLE FOR REGIONAL AIRPORT PACKAGE BENEFITS.

COMMITTED FROM STATE GOVERNMENT

- ▶ \$12 MILLION TO ENSURE JETSTAR CONTINUES AND EXPANDS PASSENGER SERVICE OPERATIONS AT AVALON AIRPORT
- ▶ \$2.7 MILLION TO PROGRESS DEVELOPMENT OF THE AVALON AIRPORT MASTER PLAN
- ▶ \$1.2 MILLION TO ENABLE DEVELOPMENT OF A 40 HECTARE INDUSTRIAL PRECINCT
- ▶ SUPPORT FOR AVALON AIRPORT TO HOST THE AUSTRALIAN INTERNATIONAL AIRSHOW UNTIL 2025
- ▶ SUPPORT TO DEVELOP GEELONG AS AN INTERNATIONAL AEROSPACE, DEFENCE AND AVIATION HUB.

SUPPORT

REQUIRED FROM FEDERAL GOVERNMENT

- ▶ PROVIDE BOARDER AGENCIES ONCE AN INTERNATIONAL AIRLINE COMMITS TO OPERATE AT AVALON AIRPORT
- ▶ STANDARDISE BORDER AGENCY AND AIRSERVICES' CHARGES EQUAL TO THE RATES CHARGED AT TULLAMARINE
- ▶ ASSISTANCE IN ATTRACTING AN INTERNATIONAL CARRIER.

REQUIRED FROM STATE GOVERNMENT

- ▶ ASSISTANCE IN THE REALISATION OF THE COMMERCIAL/ RETAIL PRECINCT
- ▶ CONTINUED MARKETING SUPPORT TO ATTRACT TOURISM TO THE AREA UTILISING AVALON AIRPORT'S SERVICES.
- ▶ ASSISTANCE IN ATTRACTING AN INTERNATIONAL CARRIER.

AVALON AIRPORT, INCLUDING INTERNATIONAL TERMINAL THE BEST OPPORTUNITY FOR REGIONAL AND STATE GROWTH THROUGH INCREASED TOURISM, SECONDARY AIRPORT OPPORTUNITIES AND A LOGISTICS PRECINCT WITH DIRECT ACCESS TO ROAD, RAIL AND PORT.

THE OPPORTUNITY

Avalon Airport is seeking to expand its domestic operations and commence international passenger operations, which will provide a range of significant economic advantages to the G21 region.

Avalon Airport's geographic location between Melbourne and Geelong makes it both a capital city airport and an exceptionally well-equipped regional airport, servicing a large catchment in western Victoria and providing connections to significant tourism destinations such as the Great Ocean Road.

Growth in domestic passenger numbers throughout Australia has been strong over the past decade, and Tourism Research Australia forecasts a steady increase (1 per cent annually) that will continue over the coming decade. The vast distance between major population centres and the absence of a rapid intercity rail network virtually guarantees that the domestic market will continue to grow.

International visitation forecasts also indicate a healthy outlook for the aviation industry over the coming decade, with a projected increase of 2.3 million international travellers annually by 2019.

This highlights Avalon Airport's expansion opportunities. As a major tourism destination within Australia, the G21 region requires convenient access via a fully functioning Avalon Airport for domestic and international travellers. They, in turn, will provide a valuable boost to regional tourism and the economy.

Jetstar has committed to operate from Avalon Airport, with an agreement that will see passenger services expand over the next 10 years. As part of the agreement, over the next 18 months Jetstar will increase the number of flights from five to seven per day and fly to two new domestic destinations. This marks a strong partnership that will secure the future of Avalon Airport and its workers for the next decade.

It will also lay the groundwork for future expansion that will cement Avalon Airport as Victoria's second major passenger airport, including with future international carriers.

Avalon Airport is actively seeking to expand its passenger operations' capability and introduce international flights. Once an overseas carrier is confirmed, Australian Customs Service and Australian Quarantine and Inspection Service facilities will need to be established. This will require federal support.

Avalon Airport is also seeking government support to establish a rail link to the airport to cater for future growth in passenger numbers.

There are further opportunities for the expansion of Avalon Airport including:

- Freight services - Avalon Airport's location, accessibility and capacity can support a significant number of specialist freight operations.
- Engineering and maintenance - Avalon Airport can accommodate large heavy-maintenance facilities and infrastructure.
- Retail/commercial services - including hotel, rail link, service station, industrial activities, commercial offices and retail facilities.

The airport is privately owned and operates as a commercial venture. The Avalon Airport international terminal and other retail/commercial services are budgeted and accounted for through private investment.

This is an Economic Development Pillar Project.

PROJECT CHAMPION

Justin Giddings, Chief Executive Officer, Avalon Airport.

▶ REFOCUS OUR ECONOMY

AVALON AIRPORT, INCLUDING INTERNATIONAL TERMINAL

(CONT.)

PROJECT AIMS

TO SUPPORT THE CONTINUATION AND EXPANSION OF DOMESTIC SERVICES FROM AVALON AIRPORT

This will require assistance from both federal and state governments.

The State Government provides incentives for airlines to base aircraft in Victoria. However, this assistance needs to be increased to encourage airlines to better utilise Avalon Airport as Victoria's newest airport.

The Federal Government and its fully owned aviation organisations such as Airservices Australia, should work to ensure Avalon Airport is provided with a fair platform to compete for domestic services. This includes ensuring pricing for services such as air traffic control, firefighting services and policing does not adversely impact Avalon Airport.

TO SUPPORT THE DEVELOPMENT OF AVALON AIRPORT AS AN INTERNATIONAL PASSENGER AIRPORT AND IN GAINING INTERNATIONAL CARRIERS

This will require both federal and state government assistance.

The State Government provides incentives for international airlines to operate in Victoria. Continued marketing assistance is required to develop Avalon as an international carrier.

The Federal Government has committed to funding the development of a new international terminal in the event Avalon secures an agreement with an international airline.

The Federal Government can also assist Avalon Airport's international endeavours by providing appropriate border agency services (as required), priced so not to disadvantage Avalon Airport against its competitors. Under current practice some costs would be charged to Avalon Airport (or its airlines) where this does not occur at Tullamarine Airport.

The addition of a rail link to Avalon Airport, connected with Melbourne and Geelong, will be important to service future domestic and international passenger growth.

The airport also has a large retail and commercial precinct which also has the potential to drive regional employment.

WHAT HAS BEEN COMMITTED

The Federal Government:

- has approved a variation of the airport lease which will fast track a new international airport terminal provided the works do not exceed 10,000 square metres and cost more than \$15 million
- has committed funding for a new international terminal triggered by Avalon Airport securing an agreement with an international airline
- will re-classify Avalon Airport to make it eligible for benefits associated under the current Regional Airport Package
- has approved the Avalon Airport Masterplan.

The State Government has committed:

- \$12 million over 10 years to ensure Jetstar continues and expands passenger services operations at Avalon Airport
- \$2.7 million to progress development of an Airport Precinct Master Plan
- \$1.2 million to enable development of a 40 hectare industrial precinct that will help diversify operations and attract further investment
- to support Avalon Airport as the host of the Australian International Airshow until 2025
- to support the development of Geelong as an international aerospace, defence and aviation hub.

WHAT IS REQUIRED

A Federal Government commitment to:

- provide boarder agencies once an international airline commits to operate at Avalon Airport
- standardise border agency and Airservices' charges equal to the rates charged at Tullamarine
- assist Avalon Airport in attracting an international carrier.

A State Government commitment to:

- assist in the realisation of the commercial/retail precinct
- continued marketing support to attract tourism to the area utilising Avalon Airport's services
- assist Avalon Airport in attracting an international carrier.
- a rail link to service Avalon Airport.





CONVENTION AND EXHIBITION CENTRE

GENERATES \$500 MILLION OVER A 10 YEAR PERIOD.

THE OPPORTUNITY

Business events in Australia are a high yield component of the tourism industry, currently generating \$17 billion annually. Geelong is an award-winning convention destination, but a lack of suitable convention space limits our ability to capitalise on this growing national conference market.

Of the 368 events per year required in the G21 region, 16 per cent are booked outside the region because of deficient facilities.

The proposed Geelong Convention and Exhibition Centre will include a conference venue with the capacity for 1,000 plenary delegates. It will provide 3,000m² of exhibition space, banqueting facilities, meeting rooms, a business centre and retail outlets.

A G21 region Convention and Exhibition Centre will position the region as a viable, well-located option that complements Melbourne facilities and stamps Victoria as a global and national competitor for business events.

The project is becoming increasingly urgent as other regional centres establish competitive facilities; Townsville, Mackay, Cairns, Alice Springs, Hobart for example.

This is an Economic Development Pillar Project.

PROJECT CHAMPION

Kelvin Spiller, Chief Executive Officer, City of Greater Geelong.

AT A GLANCE

\$Funding

COMMITTED FROM STATE GOVERNMENT

- ▶ FUNDING FOR A BUSINESS CASE THAT WILL FORM THE BASIS OF A FUNDING APPLICATION AND DEVELOPMENT DECISIONS.
- ▶ IDENTIFICATION OF A SITE, IN ASSOCIATION WITH DEAKIN UNIVERSITY, FRONTING CORIO BAY ON WESTERN BEACH, GEELONG

\$Funding

THE STATE GOVERNMENT TO PROVIDE:

- ▶ FUNDING FOR BASE DESIGN OF A GEELONG CONVENTION AND EXHIBITION CENTRE.

THE FEDERAL GOVERNMENT TO:

- ▶ GIVE CONSIDERATION FOR PARTIAL FUNDING OF THIS CRITICAL PROJECT AT AN APPROPRIATE TIME.

CONVENTION AND EXHIBITION CENTRE (CONT.)

PROJECT AIMS

The Convention and Exhibition Centre will deliver a purpose built, private public partnership funded centre for conventions and exhibitions including:

- multipurpose format to accommodate small to medium size events
- seating for up to 1000 people in banquet setting
- 1000 seat auditorium with smaller theatrettes
- 3000m² pillarless exhibition / display area
- ancillary facilities including parking, retail and associated facilities
- provision for a 4-star hotel of at least 200 rooms as part of the complex.

BENEFITS FOR VICTORIA AND THE G21 REGION

A Convention and Exhibition Centre in the G21 region will:

- provide a direct and indirect economic impact of \$350 million to the regional economy during the construction phase
- provide an annual direct and indirect economic impact of \$50 million to the regional economy once operational
- support 600 jobs during the peak construction period
- create 270 ongoing jobs in the regional economy (direct and flow on jobs)
- create an architectural landmark for Central Geelong and the waterfront
- promote the region to potential employees and investors
- provide a boost to regional tourism - 39 per cent of conference delegates return to a region with their family.

WHAT HAS BEEN COMMITTED

The State Government has committed

- funding towards the Geelong Development Authority to commission a business case that will form the basis of a funding application and development decisions.
Note: A business case was not completed in time for consideration for the 2017/18 State Budget.

The State Government and Deakin University have jointly announced a university-owned waterfront site, overlooking Corio Bay, Geelong, as the potential site for a convention centre.

WHAT IS REQUIRED

The State Government to provide:

- early completion of a business case for a Geelong Convention and Exhibition Centre, including provision of hotel-style accommodation
- funding for base design of a Geelong Convention and Exhibition Centre.

The Federal Government to:

- give consideration for partial funding at an appropriate time.



AT A GLANCE

\$174.3M

COMMITTED FROM STATE GOVERNMENT

- ▶ \$103 MILLION FOR MAINTENANCE/UPGRADE OF THE GREAT OCEAN ROAD
- ▶ \$11.5 MILLION TOWARDS G21 ADVENTURE TRAILS
- ▶ \$9.8 MILLION ON ELEMENTS OF THE SHIPWRECK COAST MASTERPLAN

COMMITTED FROM FEDERAL GOVERNMENT

- ▶ \$50 MILLION FOR MAINTENANCE/UPGRADE OF THE GREAT OCEAN ROAD

\$Funding

REQUIRED FROM STATE AND FEDERAL GOVERNMENT

- ▶ COMMITMENT TO ONGOING LONG TERM MAINTENANCE FUNDING FOR THE GREAT OCEAN ROAD
- ▶ STATE GOVERNMENT COMMITMENT TO STREAMLINE GREAT OCEAN ROAD MANAGEMENT
- ▶ CONTRIBUTION TO \$18.9 MILLION OF G21 ADVENTURE TRAILS 'CRITICAL WORKS'
- ▶ CONTRIBUTION TO DEVELOP ICONIC TOURISM PROJECTS – FORT QUEENSCLIFF PRECINCT, APOLLO BAY HARBOUR PRECINCT, GREAT OCEAN ROAD GATEWAY, AND SHIPWRECK COAST MASTERPLAN IMPLEMENTATION



GREAT OCEAN ROAD

UPGRADING, MAINTAINING AND MANAGING THE POTENTIAL OF THE GREAT OCEAN ROAD AND SURROUNDS TO SUPPORT A \$2.1 BILLION TOURIST INDUSTRY.

THE NEED

The National Heritage-listed Great Ocean Road is the critical underpinning infrastructure that supports the Great Ocean Road region's \$2.1 billion tourism industry. Stretching for 243 kilometres, the Great Ocean Road is regarded as one of the world's iconic coastal drives, while also linking the numerous tourism villages and destinations along the coast.

The road is also the focus of the region's adventure tourism, including an extensive trails network.

The Great Ocean Road is a significant economic driver, not just to the G21 region but also to Victoria. Visitors access it from many locations including Avalon Airport, Princes and Hamilton highways and Queenscliff, via road, ferry and rail.

This is a joint Economic Development and Sport & Recreation Pillar Project.

▶ REFOCUS OUR ECONOMY

PROJECT AIMS

MAINTAINING THE GREAT OCEAN ROAD

Given the Great Ocean Road's iconic status and economic importance, it is essential for the road to be appropriately maintained and developed to meet current and forecast usage.

The state and federal governments in 2013 committed, between them, \$50m towards the maintenance of the Great Ocean Road, with a further \$50 million in 2016. Late in 2016, the state government announced a further \$53 million for infrastructure along the Great Ocean Road, including a barrier to prevent landslips from affecting the road at Wye River.

While this much-needed funding was extremely welcome, on-going long-term funding commitments are necessary to maintain this vital economic asset for future generations.

VISITATION YIELD

More than seven million people visit the Great Ocean Road each year - indeed, more overseas tourists visit the Great Ocean Road than the Great Barrier Reef. However, the yield from this high-level visitation is extremely low, with the average visitor spend at the 12 Apostles being just 17 cents.

Improved private and public sector tourist facilities and associated amenities are needed to enhance the visitor experience and maximise the economic benefit to the G21 region and the state.

MANAGEMENT

The Great Ocean Road and surrounds is managed by various agencies including:

- Surf Coast Shire
- Colac Otway Shire
- Borough of Queenscliffe
- Corangamite Shire
- Warrnambool City
- Moyne Shire
- Great Ocean Road Coastal Committee
- Great Ocean Road Tourism
- Tourism Greater Geelong and the Bellarine
- VicRoads
- Parks Victoria

- DELWP
- Western Coastal Board
- Victorian Coastal Council

The fragmented nature of the management of the Great Ocean Road is a major hindrance to the realisation of its economic potential, both to the G21 region and Victoria.

There is a need to simplify and better coordinate management arrangements, possibly through an over-sighting body covering the length of the Great Ocean Road.

ICONIC INFRASTRUCTURE OPPORTUNITIES

Investment in destination infrastructure is essential along the Great Ocean Road in order to increase the economic yield of visitation.

Priorities for such infrastructure investment include:

FORT QUEENSCLIFF TOURISM PRECINCT

The Fort Queenscliff Precinct Tourism Master Plan outlines how the fort could be used to attract visitors to Queenscliff, supporting businesses, strengthening the community and stimulating the economy.

With its iconic location, rich history and heritage buildings and assets, Fort Queenscliff is ideally placed as a potential tourism destination of national significance.

The Master Plan outlines four core principles that underpin future planning and decision-making and incorporates seven projects that would activate the Fort with little or no impact upon existing operations.

APOLLO BAY HARBOUR

Apollo Bay's harbour is one of only three safe blue-water havens in Victoria west of Port Phillip Bay. It is home to the local fishing industry with a fleet generating an annual catch of \$6.5 million. However, the harbour has limited facilities for blue-water recreational boating enthusiasts, or for enhanced tourism and leisure experiences.

Increased investment is needed in quality tourist infrastructure, community facilities, and visitor experiences in heritage and environment, food, wine and other indulgent products.

An Apollo Bay Harbour Master Plan has been developed. Colac Otway Shire Council is now investigating interest to invest in public and private infrastructure.



ADVENTURE TRAILS

A spectacular natural landscape, close proximity to Melbourne and strong population growth in areas such as Geelong and the Surf Coast, gives the G21 region a unique advantage to grow the 'adventure tourism' market, including by enhancing its adventure trails network.

The Growing Adventure Tourism initiative has a vision for the G21 region 'to be recognised as Victoria's premier trail destination with a range of trails and cycling touring routes that offer exceptional natural adventure experiences'.

This aligns with Victoria's Trails Strategy 2014-24 vision for Victoria to be recognised as a leading trail-based destination.

A majority of the trails are associated with the natural beauty of the Great Ocean Road precinct and its hinterland. Although, there are some trails to be found further inland.

GREAT OCEAN ROAD GATEWAY

As the eastern start of the Great Ocean Road, Torquay has a vital role to play in influencing the visitor journey through the Great Ocean Road precinct.

A three-part strategy has been developed to:

- make Torquay a 'gateway' to the Great Ocean Road experience;

- build compelling assets to attract high-yield visitors and increase dwell-time and visitor yield; and
- use marketing and technology to promote a multifaceted experience, connecting what Torquay already offers to better meet visitor expectations.

Surf Coast Shire Council, with Great Ocean Road Regional Tourism, is undertaking research for a business case to deliver an experience including key cultural and interpretative concepts to ensure Torquay is a 'must do' Great Ocean Road destination.

The concept and business plan will be finalised in October 2017.

SHIPWRECK COAST MASTERPLAN

The Shipwreck Coast Master Plan has been developed for a 28 km stretch along the state's south-west coast, from Princetown to the Bay of Islands, which incorporates the Twelve Apostles, Port Campbell and the Blowhole.

Although not within the G21 region, the Shipwreck Coast is an integral part of the Great Ocean Road tourist experience.

G21 therefore supports implementation of the masterplan, which is calling for \$340 million of infrastructure upgrades, both public and private sector.

GREAT OCEAN ROAD (CONT.)

PROJECT CHAMPION

Keith Bailey, CEO, Surf Coast Shire

Sue Wilkinson, CEO, Colac Otway Shire

WHAT HAS BEEN COMMITTED

MAINTENANCE OF THE GREAT OCEAN ROAD

Federal and state governments have committed \$153 million:

- the federal and state governments each committed \$25 million to upgrade the Great Ocean Road (2013 - as a result of G21's OMGreatOceanRoad campaign)
- the federal government made an election commitment of \$25 million for further upgrades to the Great Ocean Road (June 2016)
- the state government matched the federal election commitment, providing \$25 million for further upgrades to the Great Ocean Road (Nov 2016), and
- the state government committed \$53 million for ongoing works beginning early 2017, specifically for resurfacing, stabilisation, signage and traffic management technology improvements (Dec 2016 & 2017/18 Budget)

GREAT OCEAN ROAD GATEWAY

Commitment to support implementation of the Great Ocean Road Gateway project, on completion of concept development and business case.

SHIPWRECK COAST MASTERPLAN

The Victorian government has committed \$9.8 million on a range of tourism experiences including:

- a new world-class lookout at the Twelve Apostles
- a new lookout over 'The Blowhole'
- a new pedestrian bridge over Campbell's Creek in Port Campbell, and
- telecommunications, WiFi and a digital interpretation around the Twelve Apostles.

ADVENTURE TRAILS

The State Government has committed:

- \$3 million towards the Barwon River Parklands Partnership and Strategy development
- \$80,000 towards development of the Regional Trails Master Plan (2009)

- \$5.9 million towards the Great Ocean Walk
- \$1.1 million towards the Bellarine Rail Trail
- \$800,000 towards the Surf Coast Walk
- \$500,000 towards the Old Beechy Rail Trail
- \$100,000 towards the Geelong Waterfront and Cycle Connections
- \$40,000 towards Anglesea Mountain Bike Park
- \$30,000 towards Forrest Mountain Bike Strategic Plan (2014)
- to help Barwon Water develop 66 hectares of public parkland around the heritage-listed ovoid sewer aqueduct in Breakwater.

WHAT IS REQUIRED

MAINTENANCE OF THE GREAT OCEAN ROAD

Federal and state government commitment to on-going long-term funding to maintain the Great Ocean Road as a vital economic asset.

MANAGEMENT OF THE GREAT OCEAN ROAD

Implementation of a State Government 2017/18 Budget commitment to establish a taskforce to examine simplification of the road's management.

FORT QUEENSCLIFF TOURISM PRECINCT

Government financial support for implementation of the Fort Queenscliff Tourism Precinct Master Plan.

APOLLO BAY HARBOUR

A state/federal government commitment of:

- \$150,000 to complete a business case and expression of interest process to inform a final Development Plan for the harbour.
- \$10+ million to implement a final Development Plan, including public infrastructure such as new internal promenade sea wall and harbour management compound, expansion of the boat ramp and parking facilities, realignment of dangerous harbour road entrance, walking trails and new sailing club facilities.

SHIPWRECK COAST MASTERPLAN

Government and private sector support for the proposed \$340 million of infrastructure upgrades as outline in the Shipwreck Coast Masterplan.

► REFOCUS OUR ECONOMY





ADVENTURE TRAILS

A government commitment of \$18.9 million for Years 1-4 critical works (see opposite figures for breakdown):

CRITICAL WORKS REQUIRED FOR 'LEADING TRAILS'

LEADING TRAILS	FUNDING REQUIRED
Great Ocean Walk - Trail Head infrastructure	\$2.8 MILLION
You Yangs Mountain Bike Park - Entrance upgrade	\$600,000
Surf Coast Walk - Stage 2 feasibility	\$480,000
Forrest Mountain Bike Park - Master Plan implementation	\$360,000
SUBTOTAL	\$4.3 MILLION

CRITICAL WORKS REQUIRED FOR 'SUPPORT TRAILS'

SUPPORT TRAILS	FUNDING REQUIRED
Barwon River Parklands	\$10.3 MILLION
Geelong waterfront and connections	\$2.2 MILLION
Old Beechy Rail Trail	\$1.2 MILLION
Bellarine Rail Trail	\$660,000
Queenscliff to Barwon Heads Coastal Trail	\$210,000
SUBTOTAL	\$14.6 MILLION
TOTAL	\$18.9 MILLION

► REFOCUS OUR ECONOMY



PORTARLINGTON SAFE HARBOUR

INCORPORATING COMMERCIAL AQUACULTURE AND RECREATIONAL FISHING, BOATING AND TOURISM ACTIVITIES FOR THE G21 REGION AND BEYOND.

THE NEED

The Portarlington Safe Harbour project will provide a much needed enhancement of the existing marine infrastructure at Portarlington, which currently comprises the pier, breakwater and berths.

It will create local employment and support the important aquaculture industry by adding value to the established and growing mussel industry in Portarlington, and sustaining a growing scallop harvesting sector.

These improvements will enhance leisure activities on offer in the region and will assist in longer-term tourism opportunities through the development of additional recreational boating opportunities.

The Portarlington Pier is in poor condition, relying on short-term works to strengthen and protect the structure. It is important to execute long-term protection and repair to ensure that pier operations can continue, and potential impact on the mussel industry is minimised.

This is an Economic Development Pillar Project.

PROJECT CHAMPION

Peter Bettess, General Manager Planning and Development, City of Greater Geelong.

AT A GLANCE

\$15.3M

COMMITTED FROM STATE GOVERNMENT

- ▶ \$12 MILLION TO IMPLEMENT STAGE 1 OF THE PORTARLINGTON SAFE HARBOUR MASTER PLAN
- ▶ \$3 MILLION FOR A NEW 175M LONG, 4.5M WIDE PIER ALIGNED ALONGSIDE THE EXISTING PIER
- ▶ \$30,000 TO RESTORE PORTARLINGTON'S HISTORIC BAND ROTUNDA
- ▶ \$250,000 TOWARDS THE TOWN SQUARE REDEVELOPMENT

\$7.9M

REQUIRED FROM STATE GOVERNMENT

- ▶ \$7.9 MILLION TO COMPLETE WATERSIDE COMMERCIAL INFRASTRUCTURE AND IMPROVE ACCESS TO THE HARBOUR
- ▶ TO RELEASE UNALLOCATED AQUACULTURE FISHERIES RESERVES TO THE MARKET
- ▶ SUPPORT TO SECURE A SITE FOR A MUSSEL HATCHERY.

▶ REFOCUS OUR ECONOMY

PORTARLINGTON SAFE HARBOUR (CONT.)

PROJECT AIMS

The Portarlington Safe Harbour will be a high quality precinct incorporating commercial aquaculture and recreational fishing, boating, passive and active recreation and tourism activities for the local community, Bellarine Peninsula and beyond. This project will provide additional jobs in tourism, aquaculture, construction and service industries.

The *Portarlington Safe Harbour Master Plan (2009)* provides direction for the harbour and foreshore and integrates these with the nearby parkland and town centre. It includes plans for a wider pier that allows for separation of pedestrians and vehicles, and new facilities for boating related activities including:

- up to 45 commercial berths
- up to 100 recreational berths
- a service berth comprising refuelling and pump out
- capacity to accommodate a possible future ferry service and tall ships within breakwater extensions
- open space and landscaping
- tourist-commercial facilities.

The Master Plan directions are included within Bellarine Bayside's *Northern Bellarine Foreshore Plan (2012)*, and all land managers have committed to working together to implement the plan.

The City of Greater Geelong and the Department of Economic Development, Jobs Transport and Resources have prepared a business case for the waterside elements of the master plan. The business case found that expansion of the harbour to allow for a larger commercial fishing fleet will generate significant economic benefits.

BENEFITS FOR VICTORIA AND THE G21 REGION

A redeveloped Portarlington Safe Harbour will:

- position Portarlington as the home of sustainable aquaculture and fine produce and a premier recreation and commercial boating hub
- enable sustainable commercial fishing activity and local employment and investment opportunities
- create a vibrant hub that is integrated with the town centre, and
- increase recreational facilities and improve space and safety for public events such as the community market and mussel festival.

WHAT HAS BEEN COMMITTED

The State Government has committed:

- \$12 million to implement Stage 1 of the Portarlington Safe Harbour master plan
- \$3 million for a new 175m long, 4.5m wide pier aligned alongside the existing pier
- \$30,000 for construction of the Portarlington Rotunda in the Town Square
- \$250,000 toward the Town Square redevelopment.

WHAT IS REQUIRED

A State Government commitment:

- of \$7.9 million to complete waterside commercial infrastructure and improve road and pedestrian access to the harbour
- to release unallocated Aquaculture Fisheries Reserves to the market
- of support to secure a site for a mussel hatchery.



AT A GLANCE

\$4.5M

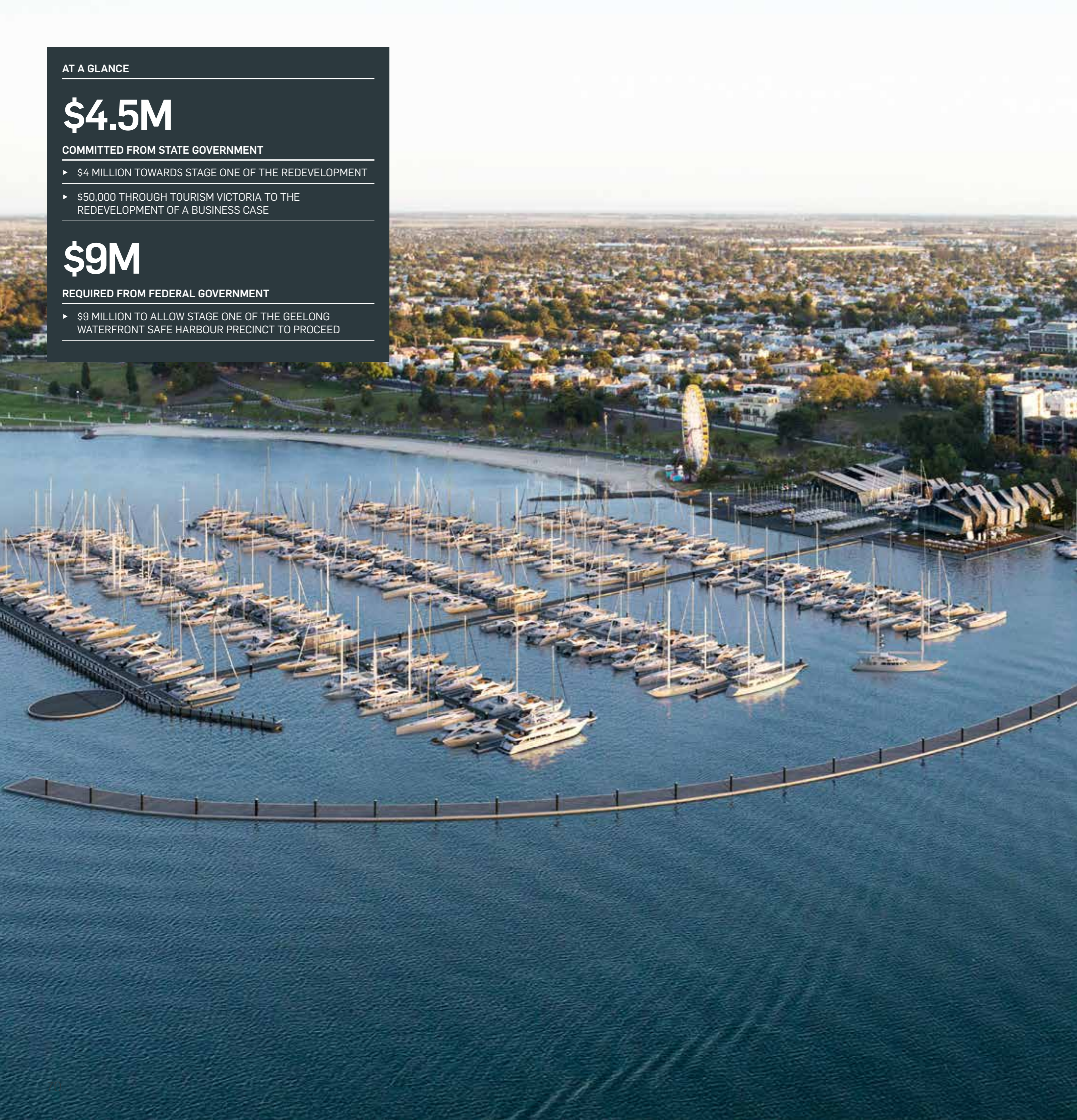
COMMITTED FROM STATE GOVERNMENT

- ▶ \$4 MILLION TOWARDS STAGE ONE OF THE REDEVELOPMENT
- ▶ \$50,000 THROUGH TOURISM VICTORIA TO THE REDEVELOPMENT OF A BUSINESS CASE

\$9M

REQUIRED FROM FEDERAL GOVERNMENT

- ▶ \$9 MILLION TO ALLOW STAGE ONE OF THE GEELONG WATERFRONT SAFE HARBOUR PRECINCT TO PROCEED



WATERFRONT GEELONG - SAFE HARBOUR PRECINCT

EXPANSION OF THE ROYAL GEELONG YACHT CLUB PRECINCT TO PROVIDE WAVE PROTECTION, ADDITIONAL MARINA BERTHS AND IMPROVED SAFER FACILITIES FOR WATER-BASED EVENTS AND ACTIVITIES.

THE OPPORTUNITY

The Geelong Waterfront Safe Harbour Precinct project will deliver the redevelopment of a key section of Geelong Waterfront including the current Royal Geelong Yacht Club (RGYC), marina and the Victorian Sailing School (VSS).

The redevelopment will create a high level of public access to the entire precinct through infrastructure supporting tourism, community activity and high value regional major events.

The project will transform and activate the precinct, deliver new visitor economy revenues and jobs and activate a minimum of \$16 million in non-government investment in future stages including further marina upgrades, expansion and retail development.

The precinct is home to major events including the annual Festival of Sails attracting more than 3000 participants and 110,000 visitors, as well as state, national and world championship boating and yachting events. The Festival of Sails generates in excess of \$14 million in economic impact for the region each year. Redevelopment will allow expansion of the festival and help attract other major events to the waterfront.

The VSS facilities will be integrated with RGYC and provide student accommodation and expanded community programs. The VSS is a campus of Newcomb Secondary College that delivers high quality and meaningful educational experiences for students from nearly 60 schools throughout the State. However, the facility is outdated and in need of upgrading to fully harness the potential for additional school programs and to provide access for people with disabilities.

The deteriorating marina wall (a threat to safety, destination boating and the growth of major events) will be replaced with a publicly accessible wave attenuator that will also provide additional temporary berthing. A new central arm of the Marina will also be constructed, enabling community access and 29 new berths.

This is an Economic Development Pillar Project.

PROJECT CHAMPION

Phil Clohesy, General Manager, Royal Geelong Yacht Club

▶ **REFOCUS OUR ECONOMY**

WATERFRONT GEELONG - SAFE HARBOUR PRECINCT (CONT.)

PROJECT AIMS

The new facilities will provide capacity to cater for a large increase in yachts and watercraft visiting and berthing safely in Geelong. It will improve public access to the water, support major events and enhance other recreation, economic and tourism opportunities.

Key aspects of the Concept Plan include:

- a new 6m wide wave attenuator (public accessible curved floating pier) which will protect the marina from rough water coming from the north-west
- the development of a modern floating-berth marina with greatly increased mooring capacity
- a new RGYC clubhouse with improved public access (the ground floor being open to the general public)
- integration of the Victorian Sailing School and its activities with RGYC, providing increased capacity to deliver important programs for the community
- a 'Sailor's Walk' public pedestrian passageway through the existing RGYC site
- Public realm and leisure area improvements
- a series of retail spaces and a public viewing platform, and
- the possibility of an interactive Maritime Cultural and Education Centre.

Redevelopment of the precinct is included as a key priority in the Victorian Government's *Revitalising Central Geelong Action Plan, 2016*, RGYC's *Strategic Plan 2017-2020*, and is aligned with the *Central Geelong Waterfront Master Plan (2011)*.

A full business case can be viewed at RGYC.com.au

BENEFITS FOR VICTORIA AND THE G21 REGION

A redeveloped Geelong Waterfront Safe Harbour Precinct would:

- deliver \$17.6 million of immediate economic benefits in Stage One
- create 42 FTE jobs each year during construction and an average of 21 FTE jobs per year ongoing
- create a more diverse and vibrant waterfront experience stimulating increased local community and visitor activity in Central Geelong

- increase the capacity for the RGYC to secure major sailing events, further strengthening the region's wider economy
- increase RGYC's capacity to deliver community programs for people of all ages and abilities
- open the possibility for other types of top-level water based activities and events, such as international triathlons
- provide improved facilities for water safety, sailing and maritime education
- create a safer harbour within Corio Bay that will benefit all boating users
- provide vastly enhanced public access to Geelong's Waterfront.

WHAT HAS BEEN COMMITTED

The Victorian Government has committed:

- \$4 million towards Stage One of the Geelong Waterfront Safe Harbour Precinct redevelopment
- \$50,000, through Tourism Victoria, towards a Business Case to investigate the economic development impacts, costing, planning and required infrastructure of the project and determine an implementation strategy. (The City of Greater Geelong and the former Geelong Otway Tourism contributed \$15,000 and the Royal Geelong Yacht Club also contributed \$15,000 towards the Business Case.)

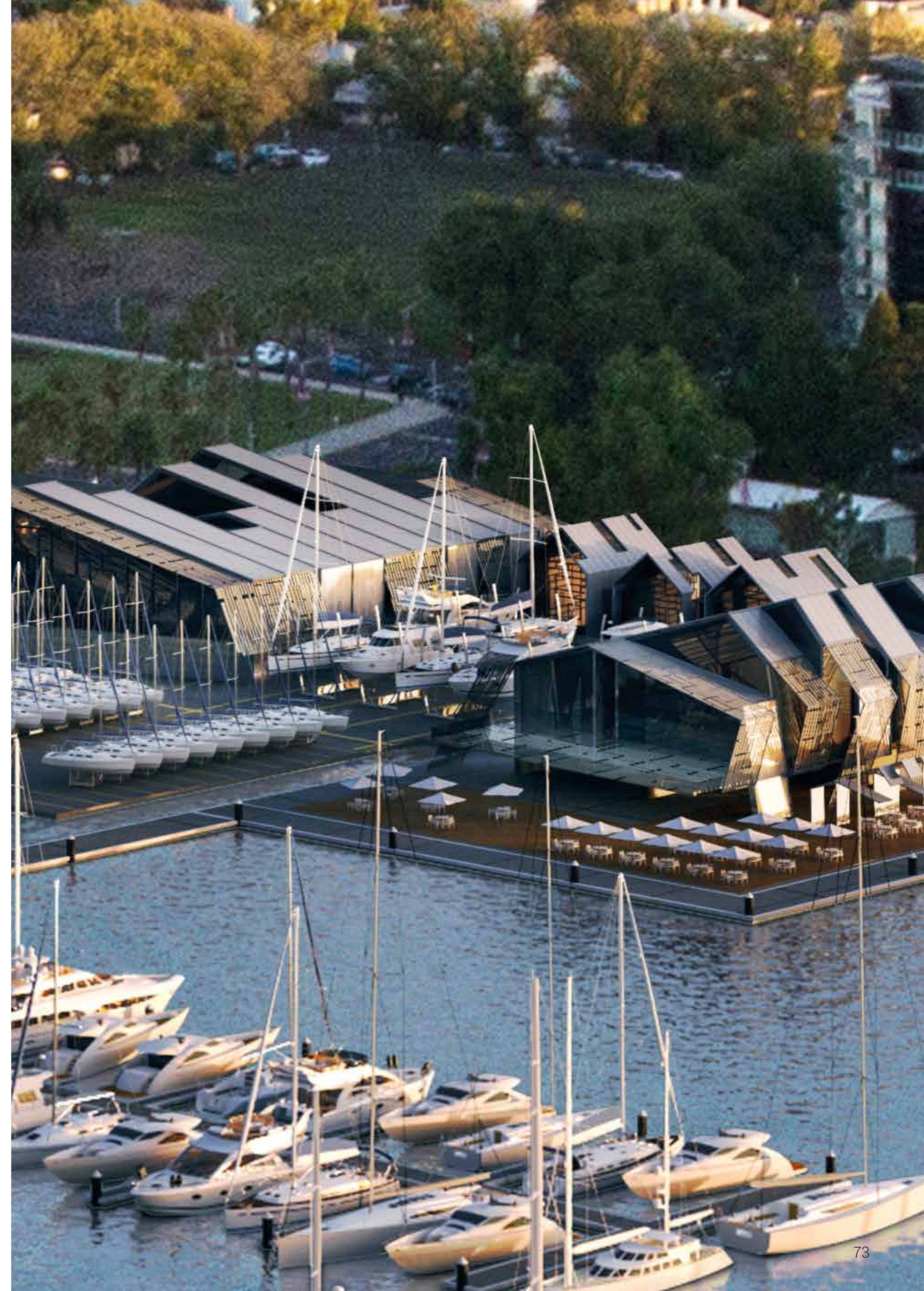
The City of Greater Geelong has committed \$3 million. Royal Geelong Yacht Club has committed \$3 million.

WHAT IS REQUIRED

A Federal Government commitment

- of \$9 million for Stage One of the Geelong Waterfront Safe Harbour Precinct.

(Note: RGYC is currently applying for contributory funding through Round 1 of the Federal Government's Building Better Regions Fund. A RGYC application through the Victorian School Building Authority's Shared Facilities Fund for funding of the Victorian Sailing School component of the project is currently been assessed.)



PILLAR PROJECTS

ARTS, HERITAGE & CULTURE PILLAR

ARTS & CULTURE ASSETS REGISTER

Art and cultural activities are a critical component of community strength and expression. A comprehensive assets register will quantify the G21 region's art, cultural and heritage assets, while also serving as a useful resource for artists, arts workers and the community.

The project will build on existing resources and involves mapping physical assets including public art, memorials and spaces - both built and natural - for performance and exhibition based on existing work including the Geelong Region Arts Atlas.

ECONOMIC BENEFITS OF ARTS & CULTURE STUDY

The *Economic Benefits of Arts and Culture Study* will provide specific and reliable economic impact data that recognises that arts and cultural activity in the community is a major contributor to sustainability, liveability and development. This will provide evidence for further advocacy in arts investment in the G21 region.

HERITAGE LISTING

An online catalogue compiling the G21 region's significant historical buildings and sites will be developed. It will highlight the region's rich cultural and historical heritage, and support an environment that embraces unique local history. A way to provide strategic support to the many history focussed community organisations across the G21 region is also being developed.

NATIONAL WOOL MUSEUM - THE NEXT 25 YEARS

A review of the National Wool Museum will be undertaken to evaluate the regional stories it tells and identify themes to be included over the next 25 years.

ECONOMIC DEVELOPMENT PILLAR

BANNOCKBURN HEART PROJECT

Developing prime land in Bannockburn's Main Street will create an attractive and welcoming community civic space that celebrates the region's heritage and culture through artwork, performances, functions, and events.

COLAC CBD & ENTRANCES PROJECT

Implementation of the *Colac CBD and Entrances Master Plan* will rejuvenate the eastern and western entrances into Colac, improving the town's visual appeal while increasing functionality for people and cars.

DEFENCE PROCUREMENT

As a member of the Geelong Defence Alliance, G21 will work to support the securing of defence contracts for our region's manufacturing companies.

FORT QUEENSCLIFF TOURISM PRECINCT

The *Fort Queenscliff Precinct Tourism Master Plan* explores how the Fort could be used to attract visitors to Queenscliff, supporting businesses, strengthening the community and stimulating the economy. This is an element of the Great Ocean Road Priority Project.

GOLDEN PLAINS FOOD PRODUCTION PRECINCT

Infrastructure to provide a dedicated water supply to intensive farm operations in the Shelford-Meredith corridor will help develop Intensive Agriculture Industries in the Golden Plains Shire, maximising their current competitive advantage, supporting future growth and playing a significant role in creating new jobs and advancing economic development.

MANUFUTURE GEELONG

ManuFuture Geelong will create an innovation hub instrumental to developing a vibrant advanced manufacturing sector in the G21 region. It will support existing

manufacturers to enter new markets, devise new products and improve productivity. It will highlight the advanced manufacturing jobs available in the G21 region and provide a viable option for retrenched workers to work in new, sustainable manufacturing enterprises.

NORTHERN GATEWAY

The unique range of existing and proposed infrastructure assets in Geelong's Northern Gateway will allow government and the private sector to attract development opportunities worldwide. Supporting the region's core industrial capacity, the precinct is strategically positioned as a "gateway" between Geelong and Melbourne, Victoria's Western District and wider domestic and international markets.

POINT GREY PRECINCT

The *Point Grey Precinct Plan* aims to strengthen the valued elements of Point Grey such as its natural beauty, rich history and rugged character and create a place that focuses on people. The plan includes a new open space area, a new maritime square, heritage interpretation and improved pedestrian access and circulation arrangements at the precinct.

SIMONDS STADIUM REDEVELOPMENT - STAGES 4 & 5

This redevelopment will complete the transformation of Simonds Stadium, strengthening the region as a sports hub and providing the infrastructure to attract a range of nationally significant events.

SURF CULTURE

A *Surf Industry Mapping Study* has revealed that the surfing industry is the Surf Coast Shire's most significant industry sector and identifies actions that will further contribute to economic growth and prosperity. A *Surf Experience Study* is proposed, which will focus on enhancing Torquay's Australian National Surfing Museum.

PILLAR PROJECTS

EDUCATION & TRAINING PILLAR

BANNOCKBURN P-12 SCHOOL

The State Government will establish a P-12 School at Bannockburn, which was strongly advocated by the Pillar. The Pillar will continue to monitor development to ensure the school is fully integrated into the local community and aligns with community facilities.

EDUCATION & SKILLS REPORT

Common data relating to education, training and employment within the G21 region will be established to develop a baseline that can be used to identify areas opportunity and provide evidence for investment. This project will collaborate with the skills mapping project established by Regional Development Australia BSW.

TORQUAY NORTH FAMILY & CHILDREN'S CENTRE

Early years services in Torquay and Jan Juc have reached capacity. The development of a children's hub in the Torquay North Community and Civic Precinct will deliver infrastructure that will provide a range of educational and care services for the growing number of families in the Surf Coast Shire. The Pillar continues to advocate for integrated community facilities.

TRADE TRAINING CENTRES

Trade Training Centres provide access to high quality, industry standard, trade facilities. They encourage students to engage in future employment opportunities while addressing national and regional skills shortages and contributing to the delivery of Vocational Education and Training (VET).

ENVIRONMENT PILLAR

BARWON RIVER PARKLANDS

The Barwon River Parklands project builds on the popular recreation opportunities of the existing trail network through Geelong to create a place of great local and regional pride while protecting the natural environment. Preservation, preparation and enhancement of the natural features of the river and lake system along this key connection corridor are a fundamental element of this project, as it moves from an establishment into a consolidation phase.

BRINGING THE BARWON TO LIFE

'Bringing the Barwon to Life' will coordinate recreation opportunities, natural resource and agricultural management along the Barwon River. Better coordinated action will help counter pressures on the river (water flows, weeds and pests, erosion and native vegetation) an enhance opportunities for further economic growth in agriculture and social infrastructure (recreation, sense of place, community events).

CARING FOR OUR BAYS

'Caring for our Bays' identifies a series of actions to respond to ongoing environmental threats to our bays. Three key concerns have been identified as negatively impacting our bays; run off from litter 'hot spots', sediment loads and nutrients. By educating the community, changing behaviours and implementing these practical actions we will safeguard the long-term future of our bays.

CENTRE FOR GRASSY RESTORATION TECHNOLOGIES & SEED PRODUCTION

This unique facility will oversee the development of restoration technologies focussing on grassland and grassy-woodland communities. It will actively supply seed for biodiversity restoration within Western Victoria's volcanic plains and showcase best practice land management to industry. The facility will be an educational resource for landholders, restorationists, schools, indigenous groups and the wider community.

CLIMATE RESILIENT COMMUNITIES

The Climate Resilient Communities program will assist ten south west Victoria municipalities (and partners) to build capacity to manage risks and build community resilience to extreme climate events while embracing any opportunities from future climate variability.

G21 ENERGY EFFICIENT STREETLIGHTS LED UPGRADE

Replacing existing inefficient streetlights with energy efficient lights across the G21 region would reduce energy usage by 80%, reduce maintenance costs by 70% and provide better lighting outcomes for the community. This significant infrastructure upgrade would replace approximately 8,000 of the region's 19,000+ streetlights.

G21 LOCAL COASTAL HAZARD ASSESSMENTS

Local Coastal Hazard Assessments (LCHA) enable councils and land managers to better understand and plan for the risks associated with sea level rise and storm surge. The local assessment will produce hazard maps for future planning that will delineate levels of coastal hazard risk.

G21 RENEWABLES PROJECT

Our climate is changing (as a result of human-induced global warming). Without action, climate change is projected to have severe consequences across the planet, including our region. G21 Solar Partnerships is an initiative which aims to encourage innovative renewable energy partnerships between organisations, business and the community across the G21 region.

LET OUR SEA BE PLASTIC BAG FREE

Over 4 billion new plastic bags are used in Australia each year. 97% of these bags end up as landfill or litter, polluting our waterways and killing our wildlife. 'Let our sea be plastic bag free' is an environmental campaign to reduce the use of disposable plastic bags.

HEALTH & WELLBEING PILLAR

G21 REGION HEALTH & WELLBEING PLAN (2013-17) IMPLEMENTATION

The *G21 Region Health and Wellbeing Plan* identified three priority actions to improve the health and wellbeing of people across the G21 region. These are to:

- 1) increase access and uptake of physical activity
- 2) strengthen our advocacy for increased community connectedness and social inclusion
- 3) build our evidence based planning and practice.

A range of projects that implement this plan have been developed.

G21 REGION EARLY INTERVENTION & INTEGRATED CARE PLAN (2014-17) IMPLEMENTATION

The *G21 Region Early Intervention and Integrated Care Plan* will enhance regional planning, research and support across the range of health care available to those with complex or chronic conditions.

A series of projects over a three-year period will implement this plan.

PLANNING & SERVICES PILLAR

APOLLO BAY HARBOUR PRECINCT

Apollo Bay's harbour is one of only three safe blue-water havens in Victoria west of Port Phillip Bay. It is home to the local fishing industry with a fleet generating an annual catch of \$6.5 million.

The project aims to address the harbour's limited facilities for blue-water recreational boating enthusiasts, or for enhanced tourism and leisure experiences.

The project is an element of the Great Ocean Road Priority Project.

AVALON CORRIDOR STUDY

Work has commenced on the *Avalon Corridor Planning Strategy* to provide direction for the significant strategic settlement break between Geelong and Werribee. This strategy will look to identify policy and other land use planning recommendations that address landscape and environmental issues as well as provide appropriate protection of Avalon Airport and its growth and associated employment opportunities.

COLAC 2050

Colac 2050 is a long-range planning project that will cater for a projected doubling of Colac's population during the next 40 years. *Colac 2050* will establish a plan for the expansion of Colac's residential housing footprint, business and industry sectors. It will also examine drainage, residential, retail and industrial land availability, flood planning, social and recreational infrastructure, traffic and pedestrian needs.

GROWING WINCHELSEA

Growing Winchelsea develops a sustainable growth framework that will make Winchelsea an even better place to live, work and visit. It optimises the town's strengths and fosters a strong sense of community, identity and heritage, while creating jobs, attracting investment and planning for the future needs of residents. Implementation is underway.

G21 LAND SUPPLY & MONITORING

This innovative online land supply mapping and reporting tool provides both a visual and reporting capability for residential and industrial land supply data in the G21 region.

NORTHERN AND WESTERN GEELONG GROWTH AREAS PROJECT

The 'Northern and Western Geelong Growth Areas' project will identify the cost implications if growth areas at Lovely Banks and Batesford South are implemented earlier than identified in the *G21 Regional Growth Plan*. The project will analyse the cost implications of delivering additional growth areas, the best methodology for delivering land for development and how infrastructure can be funded in a financially sustainable way.

TORQUAY JAN JUC SUSTAINABLE FUTURES 2040

Torquay-Jan Juc Sustainable Futures 2040 reviews the scale, timing and location of growth in Torquay-Jan Juc. Precinct structure plans, which will guide development and investment in future years, are underway.

SPORT & RECREATION PILLAR

ARMSTRONG CREEK REGIONAL ACTIVE OPEN SPACES

The Armstrong Creek Urban Growth Area boasts three regional size active open spaces. Development of two of these active open spaces is required to meet the immediate demands of this growing community. Detailed planning for these active open spaces has been undertaken.

BEECHY PRECINCT

The Beechy Precinct is an all-inclusive education, recreation and community facility designed to address the high levels of social disadvantage in the Colac area by creating an active, learning community. This includes the redevelopment of Bluewater Fitness Centre (completed), Central Reserve Master Plan and Colac Secondary College's sports fields (completed).

ADVENTURE TRAILS

A spectacular natural landscape, close proximity to Melbourne and strong population growth in areas such as Geelong and the Surf Coast, gives the G21 region a unique advantage to grow the 'adventure tourism' market, including its adventure trails network. The Growing Adventure Tourism initiative has a vision for the G21 region 'to be recognised as Victoria's premier trail destination.

This project is an element of the Great Ocean Road Priority Project

G21 REGIONAL CRICKET STRATEGY

The *G21 Regional Cricket Strategy* supports the sustainable delivery of tennis in the G21 region over the next 10 years, identifying opportunities for improved infrastructure and sports development programs.

REGIONAL SOCCER SYNTHETIC PITCH

The G21 Regional Football (Soccer) Strategy identified the need for a non-aligned regional synthetic soccer pitch to service a network of clubs in Geelong's northern suburbs where soccer participation is growing quickly.

TRANSPORT PILLAR

BICYCLE IMPROVEMENT PROJECTS

The G21 Principle Bicycle Network (PBN) will provide cyclists with safe, accessible and connected cycling routes within Geelong. It identifies and prioritises a series of projects to support sustainable cycling.

COLAC RAIL INTERMODAL FREIGHT HUB

A forecast increase in freight traffic in the G21 region has identified the need to optimise the value of the Warrnambool train line. A feasibility study investigating the need for a freight hub at Colac is required.

COLAC RING ROAD

With the upgrade of Princes Highway West approaching Colac, a corridor around Colac needs to be investigated. Benefits of the road should be maximised without adversely affecting the town.

GEELONG RAIL STATION REDEVELOPMENT

Geelong Station has been upgraded to improve accessibility between platforms and provide station facilities which are accessible for all people. The upgrade included the installation of lifts and stairs to connect Platforms 1, 2 and 3 and improvements to station facilities such as ticket counters and toilets.

GREAT OCEAN ROAD UPGRADE

A \$50 million maintenance and improvements upgrade over five years will preserve the structural integrity of this icon. It will create a showcase that reflects the roads important role as a tourist destination and significant economic driver in the G21 region.

G21 PUBLIC TRANSPORT STRATEGY IMPLEMENTATION

The *G21 Public Transport Strategy* will effectively plan for and respond to public transport opportunities and challenges

facing the region. The project's aim is to increase public transport use across the G21 region, help reduce traffic congestion and social isolation and improve the environment.

G21 REGION ROAD TRANSPORT PLAN

The *G21 Region Road Transport Plan* analyses current and future uses of the G21 region's road network and prioritises projects to ensure the road network continues to fit the needs of our population.

INTERMODAL FREIGHT INTERCHANGE

A feasibility study has identified a demand for an intermodal facility in Geelong's north to optimise the use of rail in the transport of freight and minimise secondary distribution by road.

PRINCES HIGHWAY WEST UPGRADE

Upgrades to Princes Highway West are required between Geelong and Mt Gambier including duplication between Waurin Ponds and Winchelsea (funded), Winchelsea and Colac (funded), and safety improvements between Colac and Mt Gambier.

SURF COAST HWY/BEACH RD INTERSECTION UPGRADE

The installation of traffic lights is required at one of the most dangerous and congested intersections on the Surf Coast Highway. With a history of accidents and mishap, reducing the risk of incidents at this intersection will work towards a zero regional road toll.

State Government funding towards another road project has allowed the Surf Coast Shire to fund improvements to this intersection through their capital works program.

TRANSPORT CONNECTIONS PROGRAM

This public transport trial service, which connects districts not usually serviced by public transport, should be extended and targeted to areas that don't interconnect.

THE G21 PILLARS

G21 ARTS, HERITAGE & CULTURE PILLAR

CR MARGOT SMITH (CHAIR)

Councillor, Surf Coast Shire

KAZ PATON (DEPUTY CHAIR)

Manager Arts & Culture,
City of Greater Geelong

BARBARA ABLEY AM

Member, National Serviceman's Association

SUSAN ALLSOP

Secretary, Osborne Park Association

JULIE BARNES

General Manager, Courthouse Arts

ELAINE CARBINES

Chief Executive Officer,
G21 - Geelong Region Alliance

SHANNON DI LISIO

Tourism & Community Development
Program Leader, Borough of Queenscliffe

JULIE DYER

Arts Development Officer, Surf Coast Shire

DR FIONA GRAY

Committee Member, Creative Geelong

CR HELENA KIRBY

Councillor, Golden Plains Shire

LUISA LA FORNARA

Arts & Events Manager, Diversitat

PATTI MANOLIS

Chief Executive Officer,
Geelong Regional Library Corporation

UNA MCALINDEN

Director, National Celtic Festival

PROF DAVID MCCOOEY

Personal Chair, Faculty of Arts &
Education, Deakin University

ALICE NASH

Executive Producer, Back to Back Theatre

KAREN PATTERSON

Manager, Colac Otway Performing Arts &
Cultural Centre

CR BOYCE PIZZEY

Councillor, Borough of Queenscliffe

DEB SANSOM

Community Development, Arts & Culture,
Golden Plains Shire

IAN SEUREN

Manager Arts & Leisure, Colac Otway Shire

JASON SMITH

Director, Geelong Art Gallery

JILL SMITH

General Manager,
Geelong Performing Arts Centre

DAMIAN WAIGHT

Manager Community Relations,
Surf Coast Shire

CR TERRY WOODCROFT

Councillor, Colac Otway Shire

G21 ECONOMIC DEVELOPMENT PILLAR

BRETT LUXFORD (LEADER)

General Manager Investment & Attraction,
City of Greater Geelong

DAVID PEART (DEPUTY LEADER)

Executive Officer,
Geelong Manufacturing Council

MIKE BARROW

Manager Executive Unit,
Golden Plains Shire

FELICITY BOLITHO

Executive Unit Team Leader,
Golden Plains Shire

MICHAEL BROWN

Interim Chief Executive Officer,
Kardinia Park

ELAINE CARBINES

Chief Executive Officer,
G21 - Geelong Region Alliance

HELENA CHARLES

Senior Economic Development Officer,
Golden Plains Shire

SUE CLARK

Chief Financial Officer, Geelong Cats

ED COPPE

Director, Ed Coppe Wealth Management

JENNIFER CROMARTY

President, Creative Geelong

ANDREW ELLIOT

Manager, Business Improvement,
Jetstar Airways

KERRI ERLER

Manager Economic Development BSW,
Regional Development Victoria

ROGER GRANT

Executive Director,
Tourism Greater Geelong & the Bellarine

TIM HEAD

Business Development Manager, CSIRO

SHARON KERLIN

Project Manager Skills & Jobs, The Gordon

PETER MCCRACKEN

Regional Manager,
Industry Capability Network

THE G21 PILLARS

G21 EDUCATION & TRAINING PILLAR

PROF LIZ JOHNSON (LEADER)

Pro Vice-Chancellor (Teaching & Learning),
Deakin University

CR NATHAN HANSFORD (DEPUTY LEADER)

Councillor, Golden Plains Shire

DI BAXTER

Director Quality & Management,
Deakin University

JACQUI BECK

Senior Development Coordinator,
Department of Economic Development,
Jobs, Transport & Resources

DR DAMIAN BLAKE

Associate Head of School (Teaching &
Learning), Deakin University

CARLEY BRENNAN

Project Manager Skilling the Bay,
The Gordon

ELAINE CARBINES

Chief Executive Officer,
G21 - Geelong Region Alliance

LYNNE CLARKE

Executive Officer, Geelong Regional
Vocational Education Council

CR LIBBY COKER

Councillor, Surf Coast Shire

DAVID COTSELL

Member, ACFE Regional Council BSW

JOANNE CORNELIUS

RTO Manager, AGB Group

GLENN DAVEY

Geelong Representative, Victorian
Association of State Secondary Principals

JILL EVANS

Director Community Services,
Golden Plains Shire

DARREN GRAY

Deputy Chief Executive Officer, The Gordon

PAM HARGREAVES

Education Consultant, Association of
Independent Schools of Victoria

CR STEPHEN HART

Councillor, Colac Otway Shire

ANNELIESE KNELL

Managing Director,
Geelong Kindergarten Association

KARL MAHR

Representative,
Geelong Careers Teachers Association

PATTI MANOLIS

Chief Executive Officer,
Geelong Regional Library Corporation

ANDREW PALMER

Enterprise Manager Living Well,
The Gordon

DANIELLE PARKER

Manager fOrT Youth Centre,
City of Greater Geelong

KATHY REID

Consultant

ANNE-MARIE RYAN

Executive Officer, Geelong Region Local
Learning & Employment Network

GEORGINA RYDER

Manager Training Participation Support,
Department of Education & Early
Childhood Development

CATRIONA SALT

Area Director Barwon,
Department of Education & Training

CR SUSAN SALTER

Councillor, Borough of Queenscliffe

CHRISTINE SHANNON

Director of Professional Learning &
Research, The Geelong College

ROBYN STEVENS

Manager Aged & Family, Surf Coast Shire

VIRGINIA TODD

Senior Development Officer, Regional
Development Victoria

LINDA VAUGHAN

Manager Industry Engagement & VET
Systems Division, Department of Education
& Training

DAMIAN WAIGHT

Manager Community Relations, Surf Coast
Shire

DR JUDE WALKER

Research Officer, Geelong Region Local
Learning & Employment Network

THE G21 PILLARS

G21 ENVIRONMENT PILLAR

TONY OVERMAN (LEADER)

Strategy & Sustainability Coordinator, Barwon Water

RODNEY THOMAS (DEPUTY LEADER)

Manager Environment & Waste Services, City of Greater Geelong

STEWART ANDERSON

Manager Environment & Community Safety, Colac Otway Shire

KYLIE BARSBY

Environmental Sustainability Officer, Deakin University

JASON BORG

Director Strategy & Integration, Department of Environment, Land, Water & Planning

DONNA BURNS

Program Manager Healthy Landscapes, Department of Environment, Land, Water & Planning

ELAINE CARBINES

Chief Executive Officer, G21 - Geelong Region Alliance

EMMA CONNAN

Organisational Sustainability Manager, Deakin University

DAN COWDELL

President, Geelong Sustainability Group

MAT DICKENS

Corio Waste Management

KATIE DOLLING

Environment and Education Manager, Great Ocean Coast Committee

ALEX EDWARDS

Program Manager Sustainability, Department of Environment, Land, Water & Planning

TONY ENGLISH

District Manager Western Basalt, Parks Victoria

CR DAVID EVANS

Councillor, Golden Plains Shire

CAROLYN FRANCIS

Team Leader, Environment Protection Authority

MADDIE GLYNN

Manager Community Liaison & Education, Barwon Coast

CR STEPHEN HART

Councillor, Colac Otway Shire

TIM HEAD

Business Development Manager, CSIRO

SIMON HOWLAND

Environment Services Team Leader, Golden Plains Shire

BRUCE HUMPHRIES

Senior Environmental Planner, City of Greater Geelong

PHIL JOSIPOVIC

General Manager, Planning & Infrastructure, Borough of Queenscliffe

PETER LAWSON

Regional Manager Environment & Natural Resources, Department of Environment, Land, Water & Planning

JOAN LINDROS

President, Geelong Environment Council

ROWAN MACKENZIE

Manager Environment & Community Safety, Surf Coast Shire

CR CAROL MCGREGOR

Councillor, Surf Coast Shire

LOUISE OSBORNE

R&D Partnerships & Strategic Relationships Analyst, CSIRO

MARK PAGANINI

Manager Eastern Victoria, Conservation Volunteers Australia

STUART PANOZZO

Compliance Strategist, Environment Protection Authority

ALISTAIR PHILLIPS

Director Conservation, Greening Australia

STEVEN REDDINGTON

Senior Environmental Planner, Barwon Water

MAREE REDMOND

Colac Otway Shire

CR LES ROWE

Councillor, Golden Plains Shire

KATE SMALLWOOD

Emergency Management Fire Project Coordinator, Surf Coast Shire

DALE SMITHYMAN

Emergency Management, Golden Plains Shire

LISA THOMASON

Surf Coast Shire

LUKE WILKINSON

Strategic Coordinator for BSW, Sustainability Victoria

JACQUELINE WILSON

Sustainability Officer, Borough of Queenscliffe

THE G21 PILLARS

G21 HEALTH & WELLBEING PILLAR

LIBBY MEARS (LEADER)

Chief Executive Officer, Leisure Networks

DAVID MEADE (DEPUTY LEADER)

Barwon Health

GEORGINA ALLEY

Manager Health & Community Services, Mental Health Fellowship

LEIGH BARTLETT

Regional Youth Affairs Consultant, Batforce

GRANT BOYD

Chief Executive Officer, Bethany Community Support

MAX BROADLEY

Executive Director Client Services, Barwon Child, Youth & Family

ELAINE CARBINES

Chief Executive Officer, G21 - Geelong Region Alliance

LIZ DANDO

Project Support Worker, G21 - Geelong Region Alliance

LINDI DIETZEL

Aboriginal Partnership & Planning Officer, Department of Human Services

CR DAVID EVANS

Councillor, Golden Plains Shire

JILL EVANS

Director Community Services, Golden Plains Shire

JOHN FENDYK

CEO, Bellarine Community Health

GREG FLETCHER

Manager Health & Community Services, Colac Otway Shire

CR KATE HANSON

Councillor, Colac Otway Shire

GEOFF ILES

Chief Executive Officer, Colac Area Health

LENNY JENNER

CEO, Borough of Queenscliffe

JANICE LANE

Director Health & Wellbeing, G21 - Geelong Region Alliance

EMILY LEE-ACK

Executive Officer, Women's Health & Wellbeing BSW

ROSEMARY MALONE

Chief Executive Officer, Gateway Support Services

MAUREEN O'KEEFE

Manager Settlement Services, Diversitat

MEGAN PEACOCK

Manager Research & Development Community Services, St Laurence

CHRIS PIKE

General Manager Culture & Community, Surf Coast Shire

LINDA QUINN

General Manager Community Life, City of Greater Geelong

ANNE-MARIE RYAN

Executive Officer, Geelong Region Local Learning & Employment Network

CR OWEN SHARKEY

Councillor, Golden Plains Shire

KATE SMITH

Project Support Worker, G21 - Geelong Region Alliance

CR MARGOT SMITH

Councillor, Surf Coast Shire

KAREN STAGNITTI

Associate Head of School (Research), Deakin University

PROF JOHN TOUMBOUROU

Chair in Health Psychology, Deakin University

MARG WHITE

Community Services Manager, Colac Area Health

THE G21 PILLARS

G21 PLANNING & SERVICES PILLAR

CR DAVID BELL (LEADER)

Councillor, Surf Coast Shire

CR BRIAN MCKITERICK (DEPUTY LEADER)

Councillor, Surf Coast Shire

GREG ANDERS

Director, Assets & Amenity, Golden Plains Shire

PETER BETTESS

General Manager Planning & Development, City of Greater Geelong

GEOFF BROOKS

Program Manager Regional Planning & Approvals, Department of Environment, Land, Water & Planning

ELAINE CARBINES

Chief Executive Officer, G21 - Geelong Region Alliance

REBECCA CASSON

Chief Executive Officer, Committee for Geelong

CR DAVID EVANS

Councillor, Golden Plains Shire

TIM HELLSTEN

Manager, Planning Strategy & Urban Growth, City of Greater Geelong

KAREN HOSE

Co-ordinator Strategic Land Use Planning, Surf Coast Shire

PHIL JOSIPOVIC

General Manager, Planning & Infrastructure, Borough of Queenscliffe

MARK KOLIBA

Regional Director SW Region, VicRoads

CR JOE MCCRACKEN

Councillor, Colac Otway Shire

KIM MCGOUGH

Manager Planning & Development, Department of Transport, Planning & Local Infrastructure

PETER MORGAN

Manager Asset Planning, Barwon Water

SAM PIRROTTA

SW Region Planning Manager, VicRoads

CR BOYCE PIZZEY

Councillor, Borough of Queenscliffe

RANSCE SALAN

General Manager Environment and Development, Surf Coast Shire

GARETH SMITH

Chief Executive Officer, Corangamite Catchment Management Authority

SARAH STOREN

City Greater Geelong

TIM WALLER

Manager of Planning, Golden Plains Shire

SUE WILKINSON

Chief Executive Officer, Colac Otway Shire

THE G21 PILLARS

G21 SPORT & RECREATION PILLAR

IAN HICKS (LEADER)

Social Planning & Investment Manager, City of Greater Geelong

SHAAN BRIGGS (DEPUTY LEADER)

Manager Leisure & Wellbeing, Surf Coast Shire

KEITH BAILLIE

Chief Executive Officer, Surf Coast Shire

ELAINE CARBINES

Chief Executive Officer, G21 - Geelong Region Alliance

BROOKE CONNOLLY

Team Leader, Sport, Recreation & Health, Leisure Networks

ANDREW CROWLEY

Sport & Recreation Strategic Advancement Officer, Deakin University

NICOLE FRAMPTON

Colac Otway Shire

ERIKA GEE-KOT

Manager, Sport & Recreation Victoria BSW

CR NATHAN HANSFORD

Councillor, Golden Plains Shire

CR ROSE HODGE

Councillor, Surf Coast Shire

PHIL JOSIPOVIC

General Manager Planning & Infrastructure, Borough of Queenscliffe

CAMERON LOFTUS

CEO, Barwon Sports Academy

CR BOB MERRIMAN

Councillor, Borough of Queenscliffe

JOHN O'BRIEN

Development Coordinator, Sport & Recreation Victoria BSW

STEPHEN PARKER

Coordinator Sport, Recreation & Open Space, City of Greater Geelong

CR JASON SCHRAM

Councillor, Colac Otway Shire

IAN SEUREN

Manager Arts & Leisure, Colac Otway Shire

DEAN VEENSTRA

Recreation Team Leader, Golden Plains Shire

SIMON WHITE

Program Manager Forest Management, Department of Environment, Land, Water & Planning

THE G21 PILLARS

G21 TRANSPORT PILLAR

WILLIAM TIEPPO (CHAIR)

General Manager City Services,
City of Greater Geelong

KARLY LOVELL (DEPUTY CHAIR)

Operations Manager, Deakin University

GREG ANDERS

Director Assets & Amenities,
Golden Plains Shire

CRAIG BARRASS

Program Director Economic Infrastructure,
Regional Development Victoria

MELINDA BUTTON

General Manager Corporate Affairs, V/Line

ELAINE CARBINES

Chief Executive Officer,
G21 - Geelong Region Alliance

CR LIBBY COKER

Councillor, Surf Coast Shire

CR DAVID EVANS

Councillor, Golden Plains Shire

HADDEN FINGER

Business Development Manager,
Regional Development Victoria

STEVEN FISHER

Quality Assurance Officer,
Geelong Taxi Network

GREG FLETCHER

Manager Health & Community Services,
Colac Otway Shire

DERYCK GALL

General Manager, Hoare Bros

JUSTIN GIDDINGS

Chief Executive Officer, Avalon Airport

DAVID GREAVES

Acting Works Manager, Golden Plains Shire

STUART HANSEN

Projects & Contracts Engineer,
Borough of Queenscliffe

CR NATHAN HANSFORD

Councillor, Golden Plains Shire

MARK HEARSCH

Senior Transport Planner BSW, Department
of Economic Development, Jobs, Transport
and Resources

DAVID HILL

Manager Transport Infrastructure Policy,
Department of State Development,
Business & Innovation

ANNE HOWARD

General Manager Governance &
Infrastructure, Surf Coast Shire

SIMON JACKSON

Senior Projects Officer Enterprise Geelong,
City of Greater Geelong

LENNY JENNER

Chief Executive Officer,
Borough of Queenscliffe

MARK KOLIBA

Regional Director SW Region, VicRoads

ANDREW KORR

Senior Service Planner, Regional
Victoria Network, Department Economic
Development, Jobs, Transport and
Resources

ROBERT KUEBLER

Disability Advisory Committee,
City of Greater Geelong

DAVID LOCKETT

Branch Manager - Geelong / Ballarat,
K & S Freighters

ADAM LORENSENE

Transport for Victoria

TONY MCGANN

General Manager Infrastructure and
Services, Colac Otway Shire

KEN MCNAMARA

Chairperson, Western Transport Alliance

FIONA MORAN

Building Bellarine Connections Facilitator,
City of Greater Geelong

PETER NOLAN

Service Delivery Manager, CDC Victoria

ASHLEY PATTEN

President, Bike Safe Geelong

SAM PIRROTTA

Manager Planning, VicRoads

CR CHRIS POTTER

Councillor, Colac Otway Shire

DAVID PRASAD

Golden Plains Shire

KUSHIEL PRASAD

Department of Economic Development,
Jobs, Transport and Resources

SHANE ROYLE

Trades & Property Manager, Geelong Port

FRED RUNIA

Chief Executive Officer,
Josies Transport Group

BENJAMIN SANGSTER

Service Development Manager,
McHarrys Bus Service

LARISSA SCANLON

Regional Manager South West, V/Line

VICKI SHELTON

Manager Engineering Services,
City of Greater Geelong

KAS SZAKIEL

Commercial Manager,
Victorian Regional Channels Authority

PETER VALENTINE

General Manager, Geelong Taxi Network

JOZEF VASS

Transport Coordination Manager,
Department of Economic Development,
Jobs, Transport & Resources

JANE WAGER

Coordinator Community Development,
City of Greater Geelong

CHARLES WAINGOLD

Manager Strategic Transport Planning,
Public Transport Victoria

PAUL WESTCOTT

Convenor Geelong Branch,
Public Transport Users Association



HEALTH & WELLBEING 'INCLUSIVE PRACTICE' PARTNER FORUM
Engaging with the panel

G21 WORKING GROUPS

G21 HAS SEVERAL WORKING GROUPS AND TASKFORCES
TO ADDRESS KEY ISSUES CONFRONTING OUR REGION.

ABORIGINAL GAMBLING PREVENTION WORKING GROUP

CYCLING INFRASTRUCTURE ADVISORY GROUP

ENGINEERING NETWORK CLUSTER

G21 AGRIBUSINESS FORUM

G21 AFFORDABLE HOUSING TASKFORCE

G21 PUBLIC TRANSPORT REFERENCE GROUP

G21 REGIONAL JUSTICE REFERENCE GROUP

G21 ROADS WORKING GROUP

GEELONG FOOD CO-PRODUCTS CLUSTER

ICT GEELONG

NDIA HEALTH INTERFACE WORKING GROUP

PHYSICAL ACTIVITY STRATEGY WORKING GROUP

PREVENTING AND ADDRESSING VIOLENCE AGAINST WOMEN
AND CHILDREN PROJECT PLANNING EXECUTIVE GROUP

REFUGEE & ASYLUM SEEKER ADVOCACY WORKING GROUP

WARRNAMBOOL – GEELONG RAIL LINE SERVICE WORKING
GROUP



PO Box 4078
131 Myers Street
Geelong Victoria 3220

TEL +61 3 5227 4000
FAX +61 3 5224 2594
EMAIL g21.info@g21.com.au



G21_Geelong



G21 Geelong Region Alliance

www.g21.com.au