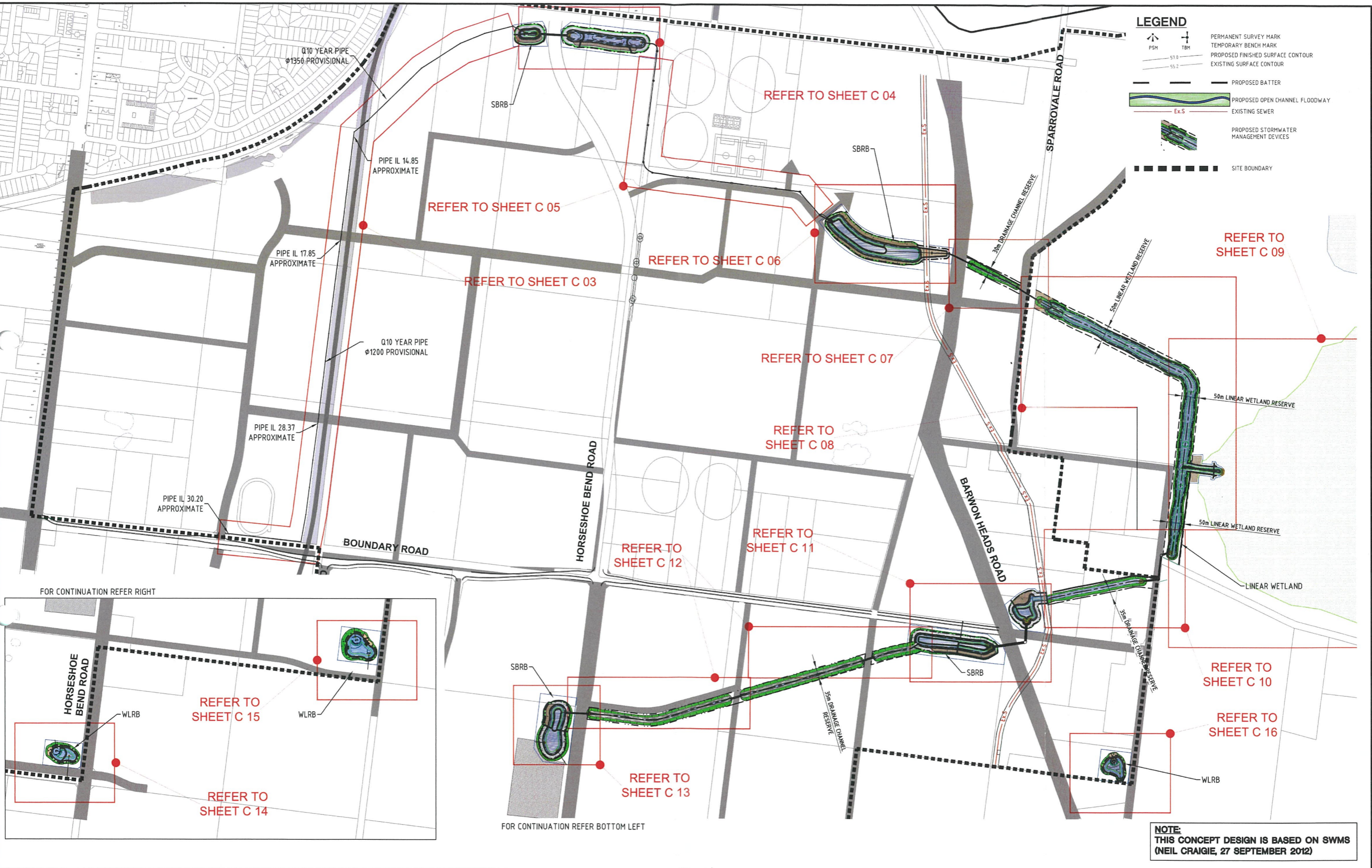


DATE PLOTTED: 8 October 2013 1:43 PM BY: AARON WARD (MELBOURNE)

XREFs: 2645760; X11786FALSURVEY; CG11786EX-CONTOURS; CG120491 SBRB - WBASE; Xref Vic roads check; W120491_SBRB_REVA
 CAD FILE: C:\Users\aron.ward\appdata\local\temp\AcPublish_550\ACG120491_C02.dwg



LEGEND

- PSM: PERMANENT SURVEY MARK
- TBM: TEMPORARY BENCH MARK
- 57.0: PROPOSED FINISHED SURFACE CONTOUR
- 55.2: EXISTING SURFACE CONTOUR
- PROPOSED BATTER
- PROPOSED OPEN CHANNEL FLOODWAY
- Ex.S: EXISTING SEWER
- PROPOSED STORMWATER MANAGEMENT DEVICES
- SITE BOUNDARY

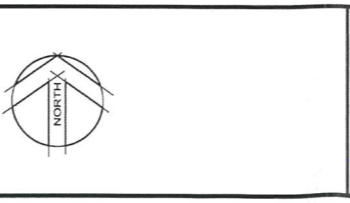
NOTE:
 THIS CONCEPT DESIGN IS BASED ON SWMS
 (NEIL CRAIGIE, 27 SEPTEMBER 2012)

Rev.	Date	Description	Dm.	Des.	Appr.
E5	08/10/13	EXTERNAL ISSUE - RESERVE RD SBRB FOOTPRINT REVISED	AW	JMN	MN
E4	01/10/13	EXTERNAL ISSUE - ASSET NAMES REVISED	AW	JMN	MN
E3	24/09/13	EXTERNAL ISSUE - RESERVE ROAD SBRB ALIGNMENT REVISED	AW	JMN	MN
E2	23/07/13	EXTERNAL ISSUE	JMN	JMN	MN
E1	02/07/13	EXTERNAL ISSUE	JMN	JMN	MN

© Cardno Limited All Rights Reserved.
 This document is produced by Cardno Limited solely for the benefit of and use by the client in accordance with the terms of the retainer. Cardno Limited does not and shall not assume any responsibility or liability whatsoever to any third party arising out of any use or reliance by third party on the content of this document.

0 50 100 200
 H 150000 A1

WARNING - EXTERNAL APPROVAL
 THIS DRAWING IS SUBJECT TO THE APPROVAL OF
 CITY OF GREATER GEELONG
 AND IS A PRELIMINARY ISSUE



Cardno
 Shaping the Future

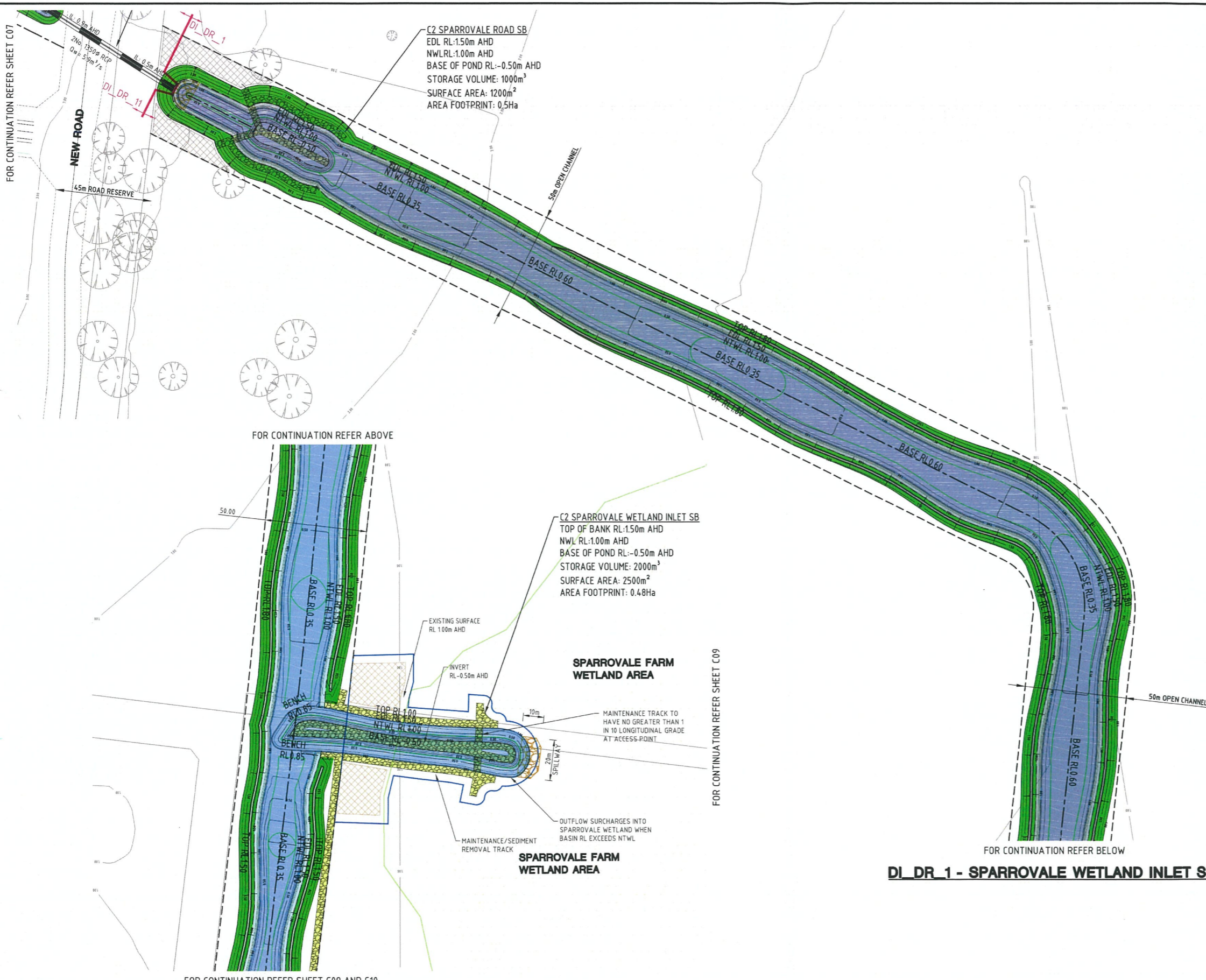
ABN: 47 106 610 913
 150 Oxford Street, Collingwood, VIC Australia 3066
 Phone: +61 3 8415 7777 Fax: +61 3 8415 7788
 Email: victoria@cardno.com.au Web: www.cardno.com/victoria

Drawn	J.MILLER-NORMAN
Designed	J.MILLER-NORMAN
Checked	
Authorised	

Client	PROJECT MANAGEMENT GROUP
Project	HORSESHOE BEND PRECINCT PSP PREPARATION CONCEPT DESIGN OF DRAINAGE AND STORMWATER MANAGEMENT PROJECTS
Title	CONCEPT PLAN OVERALL LAYOUT PLAN

Status	EXTERNAL ISSUE NOT TO BE USED FOR CONSTRUCTION PURPOSES		
Date	JUL 2012	Scale	AS SHOWN
Project Number	CG120491	Sheet Number	C 02
		Revision	A1 E5

XREFs: CG111786-WBASE; X111786-TYP LONG; X111786-VICMAP; X111786-CADASTRAL; X111786-SURVEY; X120491-Floodway - WBASE; XSurvey Ex Surface; Xref Vic roads check; W120491_SBRB_REVA; X120491_Coastlines Reva; X120491_MASTERPLAN_130713; X120491_Road Layout
 CAD FILE: C:\ORAC\CVL\2012\CG120491\CG120491 C03 - C16.dwg
 DATE PLOTTED: 8 October 2013 1:44 PM BY: AARON WARD (MELBOURNE)



DI_DR_1 - SPARROVALE WETLAND INLET SB PLAN - CONTINUED

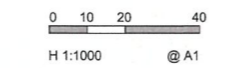
LEGEND

- PERMANENT SURVEY MARK
- TEMPORARY BENCH MARK
- PROPOSED FINISHED SURFACE CONTOUR
- EXISTING SURFACE CONTOUR
- EXISTING SURFACE LEVEL
- DRAINAGE ITEM BOUNDARY
- PROPOSED BATTER
- ROCK BEACHING WORKS
- 3.5m MAINTENANCE TRACK
- Q100 STORAGE
- PERMANENT WATER LEVEL
- EXTENDED DETENTION DEPTH
- GRASS
- EDGE BUFFER PLANTING
- SEDIMENT DRY OUT AREA
- CHANNEL LINKS
- SAFETY HAND RAIL
- Q100 WATER LEVEL
- NORMAL TOP WATER LEVEL
- EXTENDED DETENTION LEVEL
- FLOW DIRECTION
- EXISTING STORMWATER DRAIN AND PIT
- STORMWATER DRAIN AND PIT
- PROPOSED SWALE DRAIN
- EXISTING SEWER
- PROPOSED LEVEE

NOTE:
 Design is as schematic only.
 The shape and alignment of overland flow paths/reserves/wetlands should respond to topography to create 'natural' shapes/alignments. Detailed drainage / flood mitigation design may result in changes to design.

Rev.	Date	Description	Drn.	Des.	Appr.
E5	08/10/13	EXTERNAL ISSUE - RESERVE RD SBRB FOOTPRINT REVISED	AW	JMN	MN
E4	01/10/13	EXTERNAL ISSUE - ASSET NAMES REVISED	AW	JMN	MN
E3	24/09/13	EXTERNAL ISSUE - RESERVE ROAD SBRB ALIGNMENT REVISED	AW	JMN	MN
E2	23/07/13	EXTERNAL ISSUE	JMN	JMN	MN
E1	02/07/13	EXTERNAL ISSUE	JMN	JMN	MN

© Cardno Limited All Rights Reserved.
 This document is produced by Cardno Limited solely for the benefit of and use by the client in accordance with the terms of the retainer. Cardno Limited does not and shall not assume any responsibility or liability whatsoever to any third party arising out of any use or reliance by third party on the content of this document.



WARNING - EXTERNAL APPROVAL
 THIS DRAWING IS SUBJECT TO THE APPROVAL OF
CITY OF GREATER GEELONG
 AND IS A PRELIMINARY ISSUE



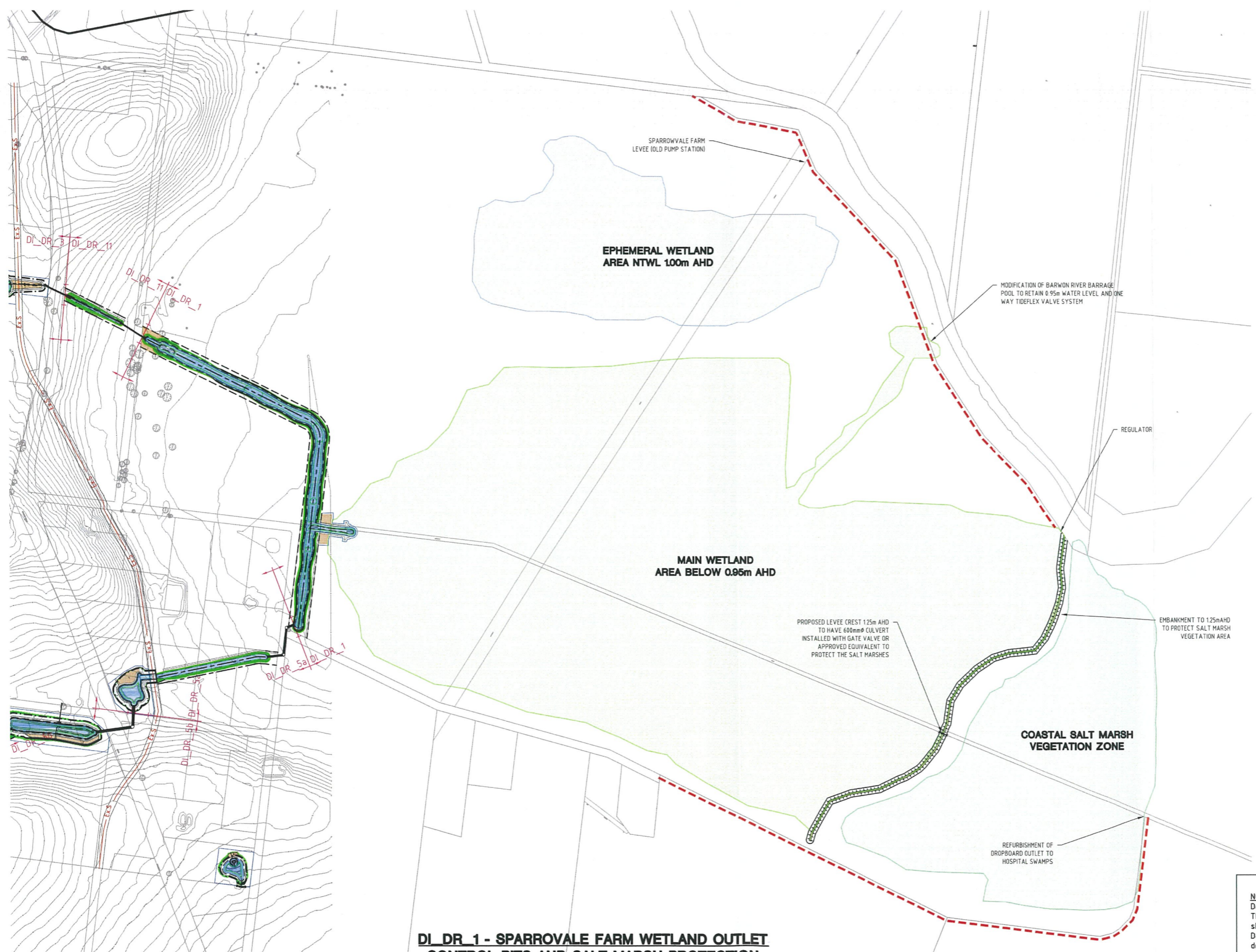
Cardno
 Shaping the Future
 ABN: 47 106 610 913
 150 Oxford Street, Collingwood, VIC Australia 3066
 Phone +61 3 9415 7777 Fax +61 3 9415 7789
 Email: victoria@cardno.com.au Web: www.cardno.com/victoria

Drawn	J.MILLER-NORMAN
Designed	J.MILLER-NORMAN
Checked	
Authorised	

Client	PROJECT MANAGEMENT GROUP		
Project	HORSESHOE BEND PRECINCT PSP PREPARATION CONCEPT DESIGN OF DRAINAGE AND STORMWATER MANAGEMENT PROJECTS		
Title	CONCEPT DESIGN DI DR 1 - SPARROVALE WETLAND INLET SB PLAN		

Status	EXTERNAL ISSUE		
Date	JUL 2012	Scale	AS SHOWN
Project Number	CG120491	Sheet Number	C 08
Revision			E5

XREFS: CG111786-WBASE: X111786 TYP LONG: X111786 VICMAP: X111786 CADSTRAL: X111786 SURVEY: X120491 Floodway - WBASE: XSurvey Ex Surface: X120491 Road Layout: X120491 Contours RevA: X120491 SBRB_REVA: X120491
 CAD FILE: C:\ORACV\12012\CG120491\CG120491_C03 - C16.dwg DATE PLOTTED: 8 October 2013 1:45 PM BY: AARON WARD (MELBOURNE)



LEGEND

- PERMANENT SURVEY MARK
- TEMPORARY BENCH MARK
- PROPOSED FINISHED SURFACE CONTOUR
- EXISTING SURFACE CONTOUR
- EXISTING SURFACE LEVEL
- DRAINAGE ITEM BOUNDARY
- PROPOSED BATTER
- ROCK BEACHING WORKS
- 3.5m MAINTENANCE TRACK
- Q100 STORAGE
- PERMANENT WATER LEVEL
- EXTENDED DETENTION DEPTH
- GRASS
- EDGE BUFFER PLANTING
- SEDIMENT DRY OUT AREA
- CHANNEL LINKS
- SAFETY HAND RAIL
- Q100 WATER LEVEL
- NORMAL TOP WATER LEVEL
- EXTENDED DETENTION LEVEL
- FLOW DIRECTION
- EXISTING STORMWATER DRAIN AND PIT
- STORMWATER DRAIN AND PIT
- PROPOSED SWALE DRAIN
- EXISTING SEWER
- PROPOSED LEVEE
- FUTURE MAINTENANCE TRACK

**DI_DR_1 - SPARROVALE FARM WETLAND OUTLET
CONTROL PITS AND SALT MARSH PROTECTION**

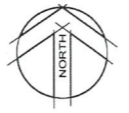
NOTE:
 Design is as schematic only.
 The shape and alignment of overland flow paths/reserves/wetlands should respond to topography to create 'natural' shapes/alignments. Detailed drainage / flood mitigation design may result in changes to design.

Rev.	Date	Description	Drn.	Des.	Appr.
E5	08/10/13	EXTERNAL ISSUE - RESERVE RD SBRB FOOTPRINT REVISED	AW	JMN	MN
E4	01/10/13	EXTERNAL ISSUE - ASSET NAMES REVISED	AW	JMN	MN
E3	24/09/13	EXTERNAL ISSUE - RESERVE ROAD SBRB ALIGNMENT REVISED	AW	JMN	MN
E2	23/07/13	EXTERNAL ISSUE	JMN	JMN	MN
E1	02/07/13	EXTERNAL ISSUE	JMN	JMN	MN

© Cardno Limited All Rights Reserved.
 This document is produced by Cardno Limited solely for the benefit of and use by the client in accordance with the terms of the retainer. Cardno Limited does not and shall not assume any responsibility or liability whatsoever to any third party arising out of any use or reliance by third party on the content of this document.



WARNING - EXTERNAL APPROVAL
 THIS DRAWING IS SUBJECT TO THE APPROVAL OF
CITY OF GREATER GEELONG
 AND IS A PRELIMINARY ISSUE



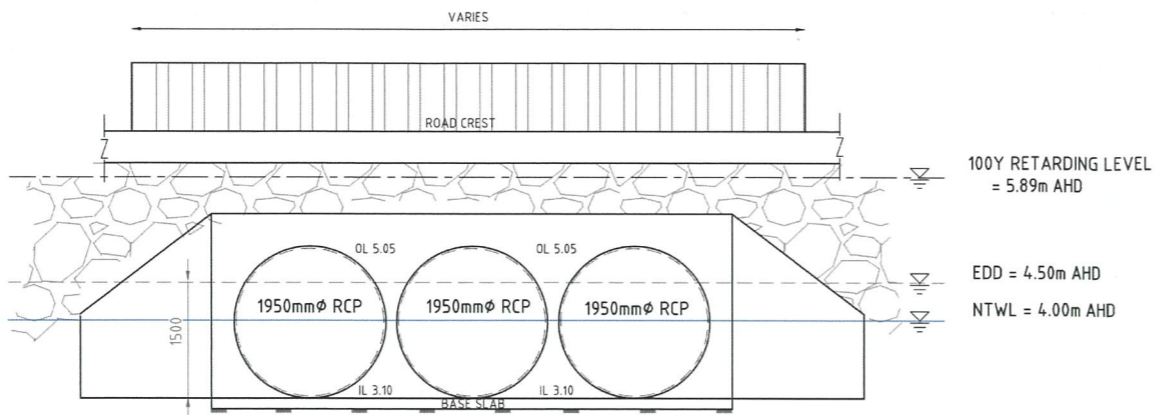
ABN: 47 106 610 913
 150 Oxford Street, Collingwood, VIC Australia 3066
 Phone +61 3 9415 7777 Fax +61 3 9415 7789
 Email: victoria@cardno.com.au Web: www.cardno.com/victoria

Drawn	J.MILLER-NORMAN
Designed	J.MILLER-NORMAN
Checked	
Authorised	

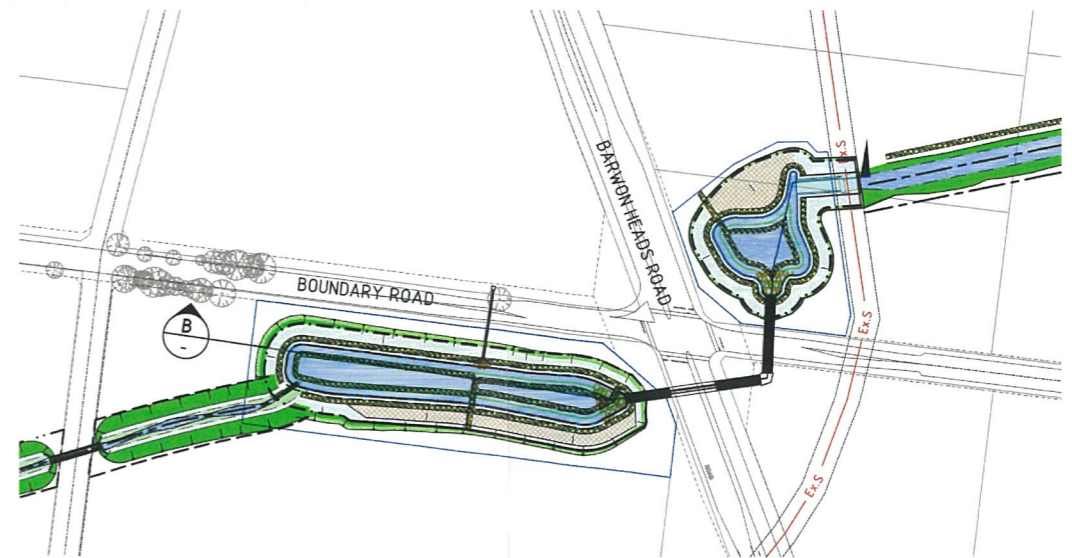
Client	PROJECT MANAGEMENT GROUP
Project	HORSESHOE BEND PRECINCT PSP PREPARATION CONCEPT DESIGN OF DRAINAGE AND STORMWATER MANAGEMENT PROJECTS
Title	CONCEPT PLAN DI DR 1 - SPARROVALE FARM WETLAND CONTROL PITS AND SALT MARSH PROTECTION

Status	EXTERNAL ISSUE NOT TO BE USED FOR CONSTRUCTION PURPOSES		
Date	JUL 2012	Scale	AS SHOWN
Project Number	CG120491	Sheet Number	C 09
Revision			E5

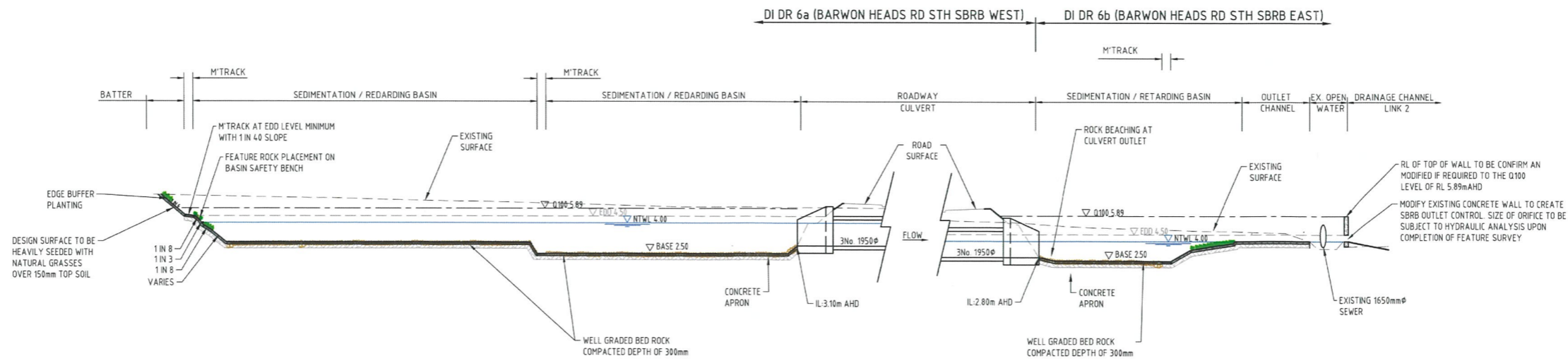
NOTE:
 Design is as schematic only.
 The shape and alignment of overland flow paths/reserves/wetlands should respond to topography to create 'natural' shapes/alignments. Detailed drainage / flood mitigation design may result in changes to design.



BARWON HEADS ROAD CULVERT FRONT ELEVATION
 SCALE H 1:20



BARWON HEADS ROAD STH SBRB LOCALITY
 SCALE H 1:20

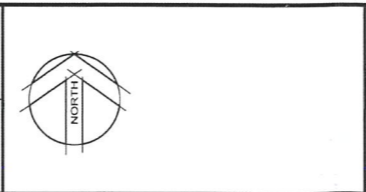


BARWON HEADS ROAD STH SBRB SECTION B
 SCALE H: 1:1000
 V: 1:200

Rev.	Date	Description	Des.	Appr.
E5	08/10/13	EXTERNAL ISSUE - RESERVE RD SBRB FOOTPRINT REVISED	AW	JMN MN
E4	01/10/13	EXTERNAL ISSUE - ASSET NAMES REVISED	AW	JMN MN
E3	24/09/13	EXTERNAL ISSUE - RESERVE ROAD SBRB ALIGNMENT REVISED	AW	JMN MN
E2	23/07/13	EXTERNAL ISSUE	JMN	JMN MN
E1	02/07/13	EXTERNAL ISSUE	JMN	JMN MN

© Cardno Limited All Rights Reserved.
 This document is produced by Cardno Limited solely for the benefit of and use by the client in accordance with the terms of the retainer. Cardno Limited does not and shall not assume any responsibility or liability whatsoever to any third party arising out of any use or reliance by third party on the content of this document.

WARNING - EXTERNAL APPROVAL
 THIS DRAWING IS SUBJECT TO THE APPROVAL OF
CITY OF GREATER GEELONG
 AND IS A PRELIMINARY ISSUE



Cardno
 Shaping the Future
 ABN: 47 106 610 913
 150 Oxford Street, Collingwood, VIC Australia 3066
 Phone: +61 3 9415 7777 Fax: +61 3 9415 7788
 Email: victoria@cardno.com.au Web: www.cardno.com/victoria

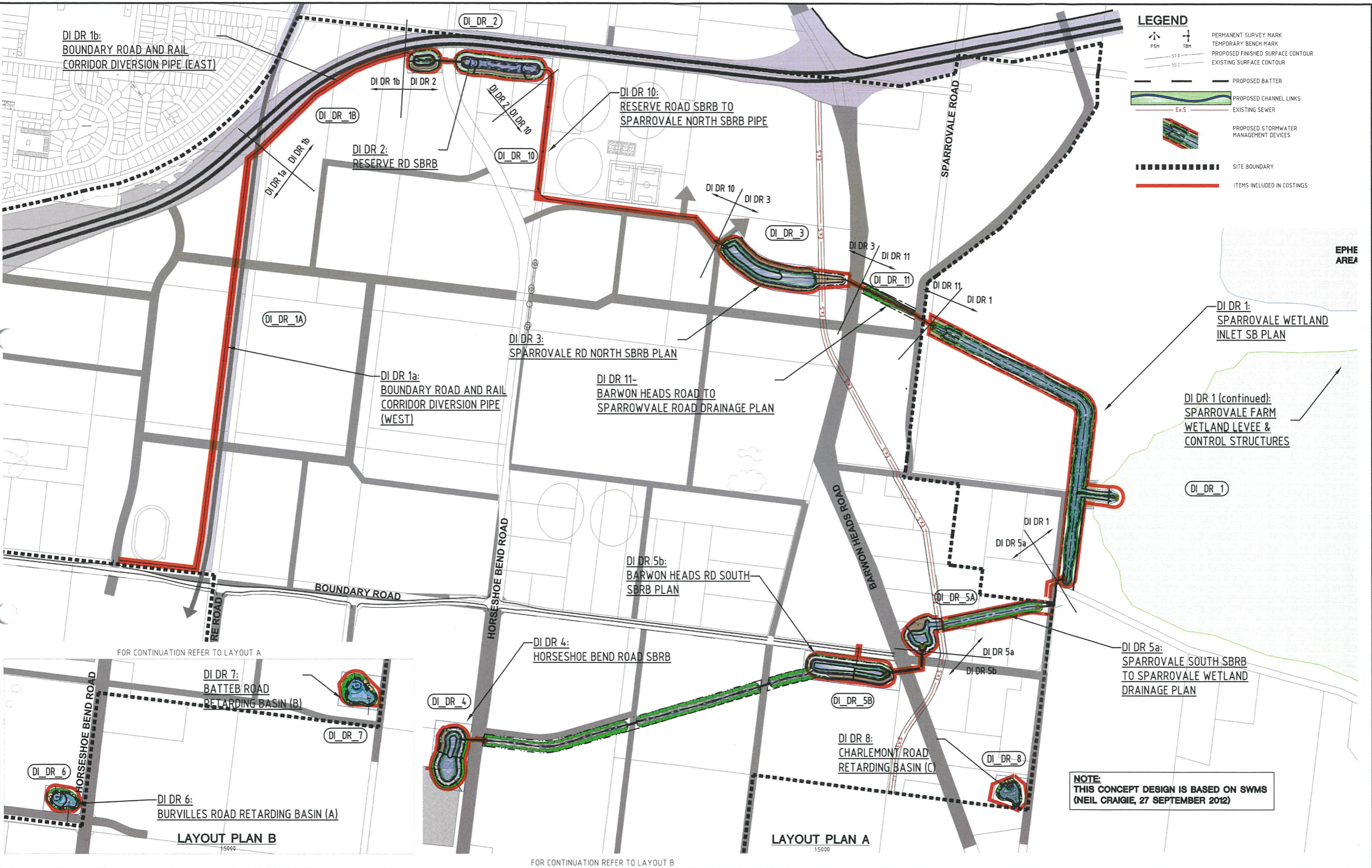
Drawn	J.MILLER-NORMAN
Designed	J.MILLER-NORMAN
Checked	
Authorised	

Client	PROJECT MANAGEMENT GROUP
Project	HORSESHOE BEND PRECINCT PSP PREPARATION CONCEPT DESIGN OF DRAINAGE AND STORMWATER MANAGEMENT PROJECTS
Title	CONCEPT DESIGN TYPICAL SECTIONS DI DR 5A AND 5B - BARWON HEADS RD STH SBRB

Status	EXTERNAL ISSUE		
	NOT TO BE USED FOR CONSTRUCTION PURPOSES		
Date	JUL 2012	Scale	AS SHOWN
Project Number	CG120491	Sheet Number	C 18
		Revision	A1 E5

DATE PLOTTED: 8 October 2013 1:47 PM BY: AARON WARD (MELBOURNE)

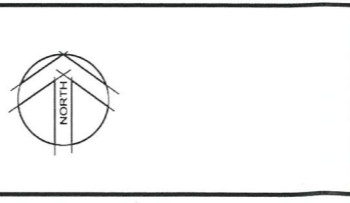
XREFs: 2645760_X111786F4LSURVEY_CG111786-WBASE_X111786EX-CONTOURS; W120491_SBRB_REVA
 CAD FILE: C:\DRAC\111786\111786-CONTOURS\CG120491\CG120491_C21.dwg



Rev.	Date	Description	Drn.	Des.	Appr.
E5	08/10/13	EXTERNAL ISSUE - RESERVE RD SBRB FOOTPRINT REVISED	AW	JMN	MN
E4	01/10/13	EXTERNAL ISSUE - ASSET NAMES REVISED	AW	JMN	MN
E3	24/09/13	EXTERNAL ISSUE - RESERVE ROAD SBRB ALIGNMENT REVISED	AW	JMN	MN
E2	23/07/13	EXTERNAL ISSUE	JMN	JMN	MN
E1	02/07/13	EXTERNAL ISSUE	JMN	JMN	MN

© Cardno Limited All Rights Reserved.
 This document is produced by Cardno Limited solely for the benefit of and use by the client in accordance with the terms of the retainer. Cardno Limited does not and shall not assume any responsibility or liability whatsoever to any third party arising out of any use or reliance by third party on the content of this document.

0 50 100 200
 H 15000 0A1
WARNING - EXTERNAL APPROVAL
 THIS DRAWING IS SUBJECT TO THE APPROVAL OF
 CITY OF GREATER GEELONG
 AND IS A PRELIMINARY ISSUE



ABN: 47 106 610 913
 150 Oxford Street, Collingwood, VIC Australia 3066
 Phone +61 3 9415 7777 Fax +61 3 9415 7788
 Email: victoria@cardno.com.au Web: www.cardno.com/victoria

Drawn J.MILLER-NORMAN
 Designed J.MILLER-NORMAN
 Checked
 Authorised

Client PROJECT MANAGEMENT GROUP
 Project HORSESHOE BEND PRECINCT PSP PREPARATION
 CONCEPT DESIGN OF DRAINAGE
 AND STORMWATER MANAGEMENT PROJECTS
 Title CONCEPT PLAN
 COSTINGS LAYOUT PLAN

Status **EXTERNAL ISSUE**
 NOT TO BE USED FOR CONSTRUCTION PURPOSES
 Date JUL 2012 Scale AS SHOWN Size A1
 Project Number CG120491 Sheet Number C 23 Revision E5