

Ceres Heritage Citations Project 2017**PLACE NAME:** Ceres Primary School**ADDRESS:** 605 Barrabool Road, Ceres

Place No. CER01

Assessment Date: May 2017

Historic Themes:**Early Settlement:** Agriculture**Community Life:** Education**Condition:** Good-Fair**Integrity:** Moderate-Low (as a postwar school)**Photograph Date:** January 2017**CURRENT HERITAGE STATUS ON STATUTORY REGISTERS****Victorian Heritage Register:** No**Victorian Heritage Inventory:** No**Local Planning Scheme:** No**CURRENT HERITAGE STATUS ON OTHER REGISTERS:****National Trust (Victoria) Register:** No**RECOMMENDED LEVEL OF SIGNIFICANCE:**

Local Significance

RECOMMENDATIONS:Recommended for inclusion in the Victorian Heritage Register: **No**Recommended for inclusion in the Victorian Heritage Inventory: **No**Recommended for inclusion as a Heritage Overlay in the Planning Scheme: **Yes****Schedule to the Heritage Overlay**External Paint Controls Should Apply? **Yes** – early Barrabool stone school building only.Internal Alteration Controls Should Apply? **No**Tree Controls Should Apply? **No**Fences &/or Outbuildings of Note? **No**Prohibited Uses May be Permitted? **No**Incorporated Document **No****Other Recommendations**

It is recommended that the significant fabric is confined to the early Barrabool stone school building, mature Washingtonia Robusta Palm tree and the hipped roofed timber shelter shed to the north-east of the early school building.

STATEMENT OF SIGNIFICANCE:**What is Significant?**

Ceres Primary School, 605 Barrabool Road, has significance as an educational and community hub since 1875 valued by the local Ceres community. Constructed as a one-roomed gabled school building of local Barrabool stone in 1875, it represented a standard Education Department styled 80-type school designed by the Chief Architect of the Department, Henry Bastow. Today, the school is an amalgam of the original design and the major alterations carried out by the Chief Architect of the Public Works Department, Percy Everett in 1949-50, following substantial storm damage to the school in 1948. In addition to being an important education centre for local Primary school children, the school has played host to different community activities including Arbor Day tree plantings in the early 20th century. The fabric of significance includes the centrally-located stone school building, mature Washingtonia Robusta Palm tree at the front and the hipped roofed timber shelter shed (built in 1934 probably to a design by the Chief Architect of the Public Works Department, Percy Everett).

Ceres Heritage Citations Project 2017

PLACE NAME: Ceres Primary School

Place No. CER01

ADDRESS: 605 Barrabool Road, Ceres

Assessment Date: May 2017

This shelter shed is a rare known surviving interwar example of a State School pavilion in the Greater Geelong area.

How is it significant?

Ceres Primary School, 605 Barrabool Road, Ceres, is historically and socially significant at a LOCAL level.

The timber shelter shed at the Ceres Primary School, 605 Barrabool Road, Ceres, is aesthetically significant at a LOCAL level.

Why is it significant?

Ceres Primary School, 605 Barrabool Road, has historical significance for its enduring associations with the development and progress of State education for local school children since 1875 (Criterion A). From this time, the school has been the centre for education and social activities in the Ceres area. It has associations with several teachers and locals, including John Matthew Hartshorn, first Head Teacher who served from 1875 until 1894 (and previously as Head Teacher at Barrabool Hills Common School No. 50 from 1867) (Criterion H). Hartshorn and other staff that followed were the guiding forces in the education of local children. The school also has associations with Henry Bastow, Chief Architect of the Education Department, who was responsible for the original gabled school building; and Percy Everett, Chief Architect of the Public Works Department who designed the "Modern" shallow pitched roofed alterations in 1949 following substantial storm damage to the building. The historical significance of the Ceres School is embodied in the surviving historic fabric: centrally located early school building constructed of Barrabool stone (an amalgam of different standard design philosophies for School buildings in the 19th and mid 20th centuries), mature Washingtonia Robusta Palm tree at the front of the site (which appears to have been planted in 1901 to celebrate the raising the Union Jack flag at the School for the first time); and the hipped roofed timber shelter shed (built in 1934 probably to a design by Percy Everett, having replaced an earlier pavilion on the site).

Ceres Primary School, 605 Barrabool Road, has social significance for the important educational role the site has played in the life and development of local school children since 1875 until the present day (Criterion G). It is recognised and valued by sections of the Ceres community for this reason.

The hipped roofed timber shelter shed at the Ceres Primary School, 605 Barrabool Road, has aesthetic significance as a rare known surviving example of an interwar State School outbuilding that demonstrates its original design (Criterion E). The modest scale and hipped form, together with the timber weatherboard wall cladding with timber lattice screening in the upper portions, and the exposed timber rafters in the eaves are those intact design traits that reflect its original appearance. While reflecting a standardized design approach by Percy Everett, Chief Architect of the Public Works Department, it is now one of few known to be extant.

The early Ceres Primary School building, 605 Barrabool Road, has aesthetic interest as a surviving amalgam of standardized State School design philosophies in the 19th and mid 20th centuries. This is evidence in the rectangular layout, Barrabool stone walls and single timber framed 12 paned double hung windows (reflective of the original design by Henry Bastow in 1875) and in the shallow-pitched roofs, raised roofed portion with clerestorey windows, broad eaves and banks of timber framed windows (a legacy of the major modernization designed by Percy Everett in 1949). While of aesthetic interest, the school building is not considered to have sufficient integrity of either era to meet an aesthetic/architectural significance threshold. There are more intact examples of single roomed State School designs of the 1870s in the Greater Geelong area, while there are more substantial and intact, purpose-built mid 20th century school buildings that embody the Modern design philosophies for State Schools by Percy Everett in Victoria.

Heritage Overlay Map

It is recommended that the heritage overlay is applied to the north-east portion of the school site at 605 Barrabool Road as shown in the following aerial image:



Source of image: City of Greater Geelong 2016.

DESCRIPTION:

The Ceres Primary School, 605 Barrabool Road, Ceres is situated on sloping ground on the southern side of the road, comprising a near rectangular layout. The front is marked by a mature cypress hedge with a central entrance opening and another opening on the east side. The latter entrance is marked by a low solid Barrabool stone fence with name plate that reads “Ceres P.S. No. 1602 Est. 1875” and cyclone wire mesh vehicular and pedestrian gates supported by timber posts. Immediately behind the hedge on the east side is an asphalt play area and skillion roofed buildings. There is another skillion roofed building on the west side, together with children’s play structures.

Centrally located is the original stone school building. It has a broadly projecting shallow pitched hipped main roof (built 1949-50), together with an elevated roofed portion (built 1949-50) with an introduced shallow gabled form (having replaced a shallow-hipped roof). These roofs are clad in introduced tray deck, having replaced asbestos roof cladding in earlier years. The raised roofed portion has early (1949-50) timber framed clerestory windows on the north (front) elevation. The Barrabool stone walls – including the rough hewn plinth with dressed coursed stonework above – reflect the original fabric of 1875. Also original are the three single window openings on the east elevation, with 12 paned timber framed double hung windows. The front elevation has a bank of three 12 paned full length windows that replaced the original raised bank of windows in 1949-50. The original stone building is dominated at the front by the introduced gabled administration wing. A remnant of the

Ceres Heritage Citations Project 2017

PLACE NAME: Ceres Primary School

Place No. CER01

ADDRESS: 605 Barrabool Road, Ceres

Assessment Date: May 2017

early cloak room wing is evident in the flat-roofed section adjoining the north wall of the school building (west side).

Adjacent to the old stone school to the north-east is the early timber shelter shed built in 1934. The modestly scaled pavilion has a hipped roof form clad in corrugated sheet metal (with an introduced bay of clear roof sheeting at the front) with broad eaves and exposed timber rafters. There is a large central door opening at the front (with an introduced door), the walls being clad in timber weatherboards, the upper open portions having timber lattice screening.

All other buildings and structures appear to have been introduced in more recent years, including the large flat and skillion roofed wing to the south-east of the old stone building, smaller gabled outbuildings and the shade sail structures.

At the rear (south of the site) is a grassed sports ground with running track. There is an asphalt basketball court in the south-east corner. The western and southern boundaries of the school site are planted with young Cypress trees.



Photo 2: Distance view (from school car park to the north-east) of the Ceres School complex, 2017.



Photo 3: Detail of front elevation of the old Ceres Primary School building, 2017.



Photo 4: Early timber shelter shed, north & east elevations, 2017.



Photo 5: Mature Washingtonia Robusta Palm tree, 2017.

HISTORY:**Early Settlement of the Barrabool Hills**

For at least 5,000 years, the Barrabool Hills was occupied by sections of the Wathaurong, a nomadic Indigenous tribe.¹ The Wathaurong's existence at Barrabool was to be dramatically changed with the arrival of John Batman and his exploration party in 1835. Arriving from Tasmania with the explicit intention of exploring the area, the eventually developed into the Port Phillip Association.² Establishing his headquarters in the vicinity of Indented Head, Batman explored the Bellarine Peninsula and Geelong region.³ One of Batman's party, John Helder Wedge, a surveyor, ventured further westward in exploring other parts of the region. He eventually followed the Barwon River from Fyansford along the foot of the 'Barrabool' Hills.⁴ There, 'he noted that the hills afforded "fine pastorage for sheep".⁵ From 1836, squatters arrived at Geelong to take up land for sheep grazing.⁶

By 1839, the Barrabool Hills had been surveyed as part of the Barrabool Parish.⁷ Large acreages were made available at a Government land sale in late 1839.⁸ In February 1840, much of the Barrabool Hills was acquired by Charles McLachlan, a wealthy Scottish businessman of Tasmania, and his business partner, Captain Charles Swanston, English banker and merchant of Tasmania and member of the Port Phillip Association⁹ who purchased Sections 2-3, 13-16, and 20-23 as his vast 4,480 acre Strathlachlan sheep estate.¹⁰ In 1850, Sections 22 and 23 and parts of Sections 13 and 14 of the Strathlachlan Estate (Barrabool Parish) were subdivided into 65 farms centred on a village of 45 building sites as the Merrawarp Estate.¹¹ By 1861, there were only 10 owner residents in the Estate, with four fifths still being tenant farmers.¹² At this time, the Barrabool Hills were considered to be the 'granary of the colony,'¹³ the location of sheep grazing and crop farms, and vineyards.

1 I. Wynd, *Barrabool: Land of the Magpie*, Barrabool Shire, Torquay, 1992, p.ix.

2 *Ibid.*, p.3.

3 *Ibid.*

4 *Ibid.*, pp.4-5.

5 *Ibid.*

6 *Ibid.*, p.5.

7 Barrabool Parish Plan, VPRS 16171, Public Record Office Victoria.

8 Port Phillip Patriot and Melbourne Advertiser, 9 December 1839, p.3.

9 D.S. Macmillan & J.R. Morris, 'McLachlan, Charles (1795-1850)' *Australian Dictionary of Biography*, National Centre of Biography, Australian National University, <http://adb.anu.edu.au/biography/mclachlanh-charles-2411/text3191>, published first in hardcopy, 1967, accessed online 20 January 2017 & C. Swanston, 'Swanston, Charles (1789-1850)', *Australian Dictionary of Biography*, National Centre of Biography, Australian National University, <http://abd.anu.edu.au/biography/swanston-charles-2713/texttext3815>, published first in hardcopy 1967, accessed online 20 January 2017.

10 Barrabool Parish Plan, op.cit. & Wynd, *op.cit.*, p.43.

11 *Ibid.*, p.22.

12 *Ibid.*

13 *Geelong Advertiser*, 14 September 1874, p.2.



Figure 1: Part Barrabool Parish Plan, Dept of Lands & Survey, Melbourne, March 1946, showing land sections in the Barrabool Hills, including Ceres. Source: VPRS 16171, Public Record Office Victoria

Another successful purchaser in February 1840 was William Robertson, Port Phillip Association member. He acquired Sections 5, 11 and 12.¹⁴ Two days after his purchase, Robertson sold Sections 11 and 12 to David Fisher, manager of the Derwent Company (successor to the Port Phillip Association). He named his estate 'Roslin' which he subdivided into farms that were leased to various tenants.¹⁵ In 1850, Fisher created the village of Ceres as a private subdivision of 58 allotments in part of Section 12.¹⁶ The small settlement was soon to become the centre of the agricultural district where the neighbouring properties farmed crops, grazed sheep and established noteworthy vineyards.

History of the Ceres Primary School

The First Schools in the Barrabool Hills

With the arrival of tenant farmers to the Merrawarp Estate and others to the Ceres village came the need for a school. A denominational school was soon established on Edward Willis' land, with 50 scholars in attended by June 1847.¹⁷ Willis donated 10 acres of land to the west of the Merrawarp Road

¹⁴ Barrabool Parish Plan, op.cit.

¹⁵ Wynd, *op.cit.*, p.208.

¹⁶ Fisher's Ceres Village Subdivision Plan, 1850, Maps & Plans collection 17/60, Geelong Library & Heritage Centre.

¹⁷ Wynd, *op.cit.*, p.65.

Ceres Heritage Citations Project 2017

PLACE NAME: Ceres Primary School

Place No. CER01

ADDRESS: 605 Barrabool Road, Ceres

Assessment Date: May 2017

for 'a school house, church, parsonage, and burial ground.'¹⁸ The foundation of a temporary school building was laid in June 1847 which was replaced by J.A. Clowes by January 1849.¹⁹ It seems a new school building was constructed by 1856, the Superintendent of the school being James Dennithorne.²⁰ This school later became Barrabool Hills State School No. 50 under the Common Schools Act 1962.²¹ Following the passing of the Education Department Act in 1872, the school building was leased to the Education Department until it closed in 1875 with the construction of a new State School on the Barrabool Road.²²

The second school to open in the district was the Wesleyan denominational school at Ceres in the newly-constructed stone chapel in 1855.²³ Opening in October 1855, the denominational school brought with it a centre of education at this location for the next 20 years. It became Common School No. 151 in 1863 and then the Ceres State School in 1872.²⁴ It closed in 1875.

A third school was established in the Barrabool Hills in 1857 with its construction on part of the Strathlachlan Estate.²⁵ A new building was opened on 19 May 1858 as a Presbyterian denominational school and it soon became the centre of community life.²⁶ With the Common Schools Act in 1863, it became school No. 73. The building was replaced with a new stone structure in 1874 before the school closed in 1881.²⁷ It reopened in the old stone building in 1921 until a new timber building was erected opposite the school site on land purchased from D. Anderson.²⁸

Establishment of the Barrabool (Ceres) State School

Selection of a Site for a New School

On 19 August 1873, John Main, District Inspector of Schools, recommended to the Education Department the purchase of John Edney's land to the south of the Barrabool Road, west of the Ceres village, as the site of a new State School building.²⁹ Main's recommendation was supported by the Local Board of Advice No. 89.³⁰ The land had been purchased by July 1874 and the urgency of a new building was highlighted by the Presbyterian Minister, Rev. Brownlie, who lamented that 'State' School No. 50 is so dilapidated as to the roof, that it is almost unfit for school purposes.'³¹

Design and Construction of the School

On 12 September 1874, Angus Mackay, Victorian Minister of Public Instruction, called tenders for 'the erection of a stone School at Barrabool.'³² The proposed school building had probably been designed by Henry Bastow, head of the Architecture branch of the Department of Education. The one-room school

18 *Ibid.*

19 *Ibid.*

20 *Ibid.*, p.66.

21 *Ibid.* See also *Geelong Advertiser* 22 July 1874, p.3 which described the school at the Barrabool Hills State School.

22 Wynd, *op.cit.*

23 *Ibid.*, p.72.

24 *Ibid.*

25 *Ibid.*, p.67.

26 *Ibid.*

27 *Ibid.*, p.69.

28 *Ibid.*

29 K. Poyner, 'Sandstone Buildings in the Parish of Barrabool Part A: The Public Building in and around Ceres', Research Report, School of Architecture, Deakin University 1978, p.51, Geelong Library & Heritage Centre collection.

30 *Ibid.*

31 *Ibid.*

32 *Geelong Advertiser*, 12 September 1874, p.3.

Ceres Heritage Citations Project 2017

PLACE NAME: Ceres Primary School

Place No. CER01

ADDRESS: 605 Barrabool Road, Ceres

Assessment Date: May 2017

at Ceres formed part of a broad standardized design approach that has its origins in the architectural campaign established by the Victorian Board of Education in the 1860s.³³ The Board had looked to England for ideas, and particularly towards the implementation of the English Privy Council system of school organization including the shape and layout of school buildings.³⁴ The English Committee of Council on Education established standardized plans in 1851, and it was from these designs where the Victorian Board of Education found ideas to form the standardized schemes in Victoria in the 19th century.³⁵

With the establishment of the Education Department in 1873 (and the disbandment of the Board of Education), the standard one-room school plans developed by the previous Department became the foundation of school design until the turn of the century.³⁶ It was also the Education Department that standardized the exteriors, under the design guidance of Henry Robert Bastow. The rudimentary construction of these school buildings were largely offset by some minimal ornamentation in the gable ends, with the use of timber finials, gable ventilators, and moulded bargeboards.³⁷

During the first three years under the control of the Education Department from 1873-76, 40 and 60 plan types predominated.³⁸ The actual size of a school building was dependent on the number of pupils that were estimated to attend, hence the 40 type for 40 children, the 60 type for 60 children and the 100 type for 100 children.

The proposed Ceres State School building (Figure 2) was based on the 80 type plan to accommodate 80 children. It was to feature the standard rectangular plan, raised platform floor, steeply-pitched gabled roof, blank side (west) wall with central projecting chimney, three single multi-paned timber framed double hung windows on the east elevation, and banks of multi-paned timber framed double hung windows on the 'end' elevations.

33 Information taken from R. Peterson & Heritage Assets Branch, 'Historic Government Schools: A Comparative Study', Department of Planning & Development, June 1993 & L. Burchell, *Victorian Schools: A Study of Colonial Government Architecture 1837-1900*, Melbourne University Press, Carlton, 1980.

34 *Ibid.*

35 *Ibid.*

36 *Ibid.*

37 *Ibid.*

38 *Ibid.*

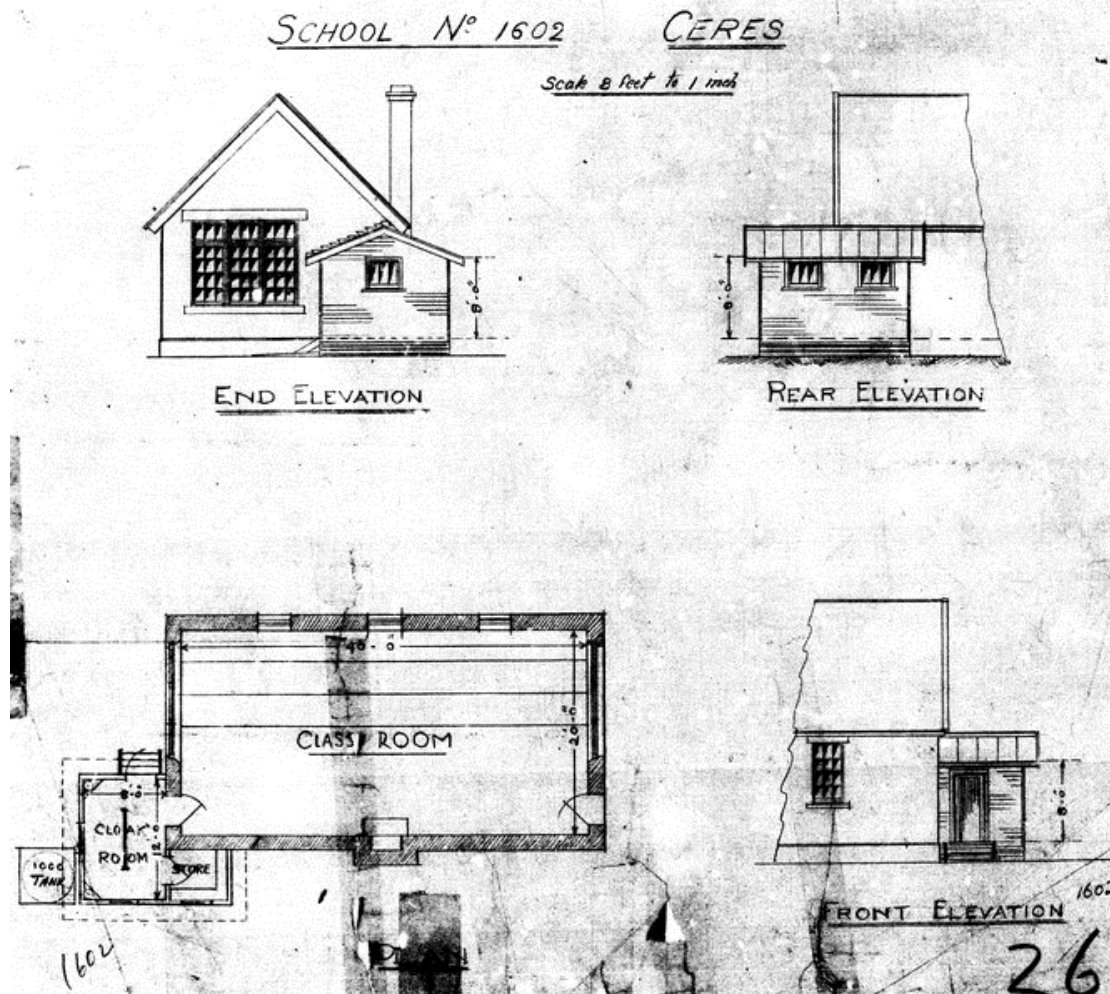


Figure 2: Plan and Elevation Drawings, Ceres State School no. 1602, n.d. (c.1948) showing original roof form and early cloakroom. Source: Drawing SSN 1602.1, Public Record Office Victoria.

The Education Department received 12 tenders for the construction of the building.³⁹ In February 1875, the tender of Giles Daniel of Albert Street, Ashby (Geelong West), for £417 was accepted for the construction of the Barrabool stone building with a slate roof.⁴⁰ John Matthew Hartshorn, formerly Head Teacher at the Barrabool State School on the Merrawarp Road from 1867, was appointed Head Teacher of the new school that was anticipated to open on 1 July 1875.⁴¹ There was a delay in the opening until 5 July as, according to Hartshorn, 'no desks or forms were on the premises and the painted inside will not be completed before Saturday next.'⁴² Although a commodious building, Hartshorn was again forced to write to the Education Department on 12 July seeking more seats as attendances ranged from 85-100 for a building designed to accommodate 80 children.⁴³ On 23 August 1875, Henry Bastow inspected the building and considered the work 'substantial and good ... far beyond what could have been demanded by the specification.'⁴⁴ However, he also noted that the chimney smoked very badly, a problem that was to beset the School of years to come until 1881 when the chimney shaft was removed

39 Poyner, op.cit.

40 Ibid. & *Victoria Government Gazette*, 26 February 1875, p.370.

41 Poyner, op.cit.

42 Ibid., p.52.

43 Ibid.

44 Ibid.

Ceres Heritage Citations Project 2017

PLACE NAME: Ceres Primary School

Place No. CER01

ADDRESS: 605 Barrabool Road, Ceres

Assessment Date: May 2017

and rebuilt.⁴⁵ Initially the ceiling remained unlined and it leaked as early December 1875 following heavy rain.⁴⁶ While Bastow's school designs usually included an entrance porch, it seems a porch was added to the school at Ceres in 1879⁴⁷ (the roof of this timber porch may have been replaced with a shallower gabled roof in later years). An underground brick water tank was also erected near the school building at this time.⁴⁸ In June 1890, the name of the school changed to Ceres State School No. 1602.⁴⁹ The front of the gabled stone building was shown in a photograph by the Public Works Department in 1948:



Figure 3: Ceres State School Building No. 1602 (right), with the shelter shed and Washington Robusta Palm tree (centre), ornamental garden (centre/foreground) and teacher's cottage (left), 6 December 1948.

Source: VPRS 10516/P3 Unit 7 Public Record Office Victoria.

Teacher's Residence

In 1877, tenders were called for the construction of a teacher's residence. The detached gabled timber cottage of standard Victorian Education Department design⁵⁰ was built by J.W. Roberts of Newtown at a cost of £232.10.0.⁵¹ John Hartshorn also requested the construction of a detached kitchen near the cottage, and a coach-house in one corner of the school site.⁵² Hartshorn took possession the new dwelling on 19 February 1878.⁵³

45 Ibid., p.52, 54.

46 Ibid., p.52.

47 Ibid., p.53.

48 *Geelong Advertiser*, 8 October 1879, p.3.

49 Wynd, *op.cit.*, p.72.

50 The gabled design of the cottage was very similar to that built as the teacher's dwelling by the Education Department at Lal Lal in 1890. See D. Rowe & W. Jacobs, 'West Moorabool Heritage Study Stage 2A, vol.3, prepared for the Moorabool Shire Council, 2016, p.248.

51 *Victoria Government Gazette*, 16 November 1877, p.2174.

52 Poyner, *op.cit.*, p.53.

53 Ibid.

J.M. Hartshorn: Long Serving Head Teacher

John Matthew Hartshorn was born in London 21 February 1835, the son of Alexander and Margaret Jane Harshorn (nee Vercoe).⁵⁴ In Victoria, he followed his father and brothers, Alexander, Charles and Ebenezer into the teaching profession, eventually being promoted to head teacher at Linton's Diggings in 1863.⁵⁵ He resigned in 1867 and took up the position as head teacher of the Barrabool Hills Common School No. 50.⁵⁶ J.M. Hartshorn married Miss Mary Laura Steele Wardrobe (1848-1934) in 1872.⁵⁷ She was appointed to teach needlework at the Barrabool Hills School in 1874 until the birth of her first child, Esther Sarah Jane Hartshorn, and then reappointed until the birth of Catherine Maud Mary in c.1876.⁵⁸ This followed J.M. Hartshorn's appointment as Head Teacher of the newly-built Ceres State School No. 1602 in 1875. John and Mary had another two children during J.M. Hartshorn's tenure at the Ceres School: Harold John (born 1879) and Stella Vercoe (born 1881).⁵⁹ Hartshorn remained at the Ceres State School until his retirement in 1894. The School held a valedictory social in his honour:

A very profitable and enjoyable evening was spent in the Temperance Hall, Ceres, on Friday evening last, when a valedictory social was given to Mr John Hartshorn, who has occupied the position of State school teacher in this district for the past 28 years. Councillor Piper was voted to the chair as one of his oldest scholars, the teacher having put through two generations. Mr P. McCann, J.P., presented to Mr Hartshorn, on behalf of the parents and scholars of the district, an artistically illuminated address, indicating the very high esteem in which that gentleman was held. Mr Hartshorn returned thanks in a very neat and modest speech.⁶⁰

John and Mary Hartshorn retired to Highton where they were involved with the Wesleyan Church (both being Sunday School Teachers) and J.M. Hartshorn was also Secretary of the Barrabool Hills Cemetery Trust.⁶¹ John Hartshorn died in 1904.⁶² In 1935, Miss E. Leigh presented the Ceres State School with a photograph of the late J.M. Hartshorn (Figure 4).⁶³

54 Victorian Births, Deaths & Marriages Indexes, op.cit. & M. Cotter, 'Alexander Hartshorn' in Rootsweb online at <http://wc.rootsweb.ancestry.com/cgi>

55 Teacher Records for Hartshorn family VPRS 13718 Public Record Office Victoria, North Melbourne.

56 Ibid.

57 Victorian Births, Deaths & Marriages Indexes, op.cit.

58 Ibid. & Teacher Records, op.cit.

59 Victorian Births, Deaths & Marriages Indexes, op.cit.

60 *Geelong Advertiser*, 5 December 1894.

61 M. Stainsby, J.A. Smith & J. Williams, *Steadfast Through Change: A History of the Wesleyan-Methodist-Uniting Church in Highton 1853 to 2006*, St. Luke's Uniting Church, Highton, 2008, p.117 & *Geelong Advertiser*, 11 July 1894, p.4 & 7 January 1896, p.3.

62 *Ibid.*, 5 December 1894.

63 *The Age*, 20 May 1935, p.12.



Figure 4: John Matthew Hartshorn, n.d. This may have been the photograph presented to the Ceres School in 1935.
Source: S. Costello, Schools of Geelong and District, Geelong Family History Group, 2010.

Progress in the 20th Century

Early 20th Century Repairs and Alterations to the School Building

By 1909, movement in one of the stone walls of the building was found to be unsafe. Portions were required to be removed and rebuilt. It seems the work was carried out by G. Wright at a cost of £39.16.0.⁶⁴ The nearby Temperance Hall was leased between August and October that year at a cost of 10/- per week.⁶⁵ In 1914, the original tiered timber floor was replaced with a new flat floor to the delight of the School Committee.⁶⁶ The walls of the building were replaced in 1934 by Lyons Brothers and Carroll, builders of Oxford Street, Belmont.⁶⁷

Alterations and Additions to the Teacher's Residence

By 1924, the teacher's residence had not been occupied for a number of years and was in disrepair. The four roomed dwelling was deemed to be too small for a teacher with a family.⁶⁸ Additions were subsequently carried out by R.R. Willard of Newtown at a cost of £369.⁶⁹ They appear to have included a skillion wing at the rear, accommodating a kitchen, bedroom, porch and bathroom, as shown in Figure

⁶⁴ *Geelong Advertiser*, 2 July 1909, p.3.

⁶⁵ Poyner, op.cit., p.54.

⁶⁶ H.C. Heal, Correspondent, Ceres School Committee No. 1602, to the Secretary, Education Department, 20 April 1914, Public Building file, VPRS 795/P0 Unit 2287 Public Record Office Victoria, North Melbourne.

⁶⁷ *The Argus*, 8 May 1934, p.5.

⁶⁸ File note, 2 April 1924, Public Building file, op.cit. & *Geelong Advertiser*, 2 August 1924, p.5.

⁶⁹ *Ibid.*, 24 September 1924, p.6.

3 in 1948. A sleep-out was proposed at the front of the dwelling in 1946 to a design by the Public Works Department (Figure 5).

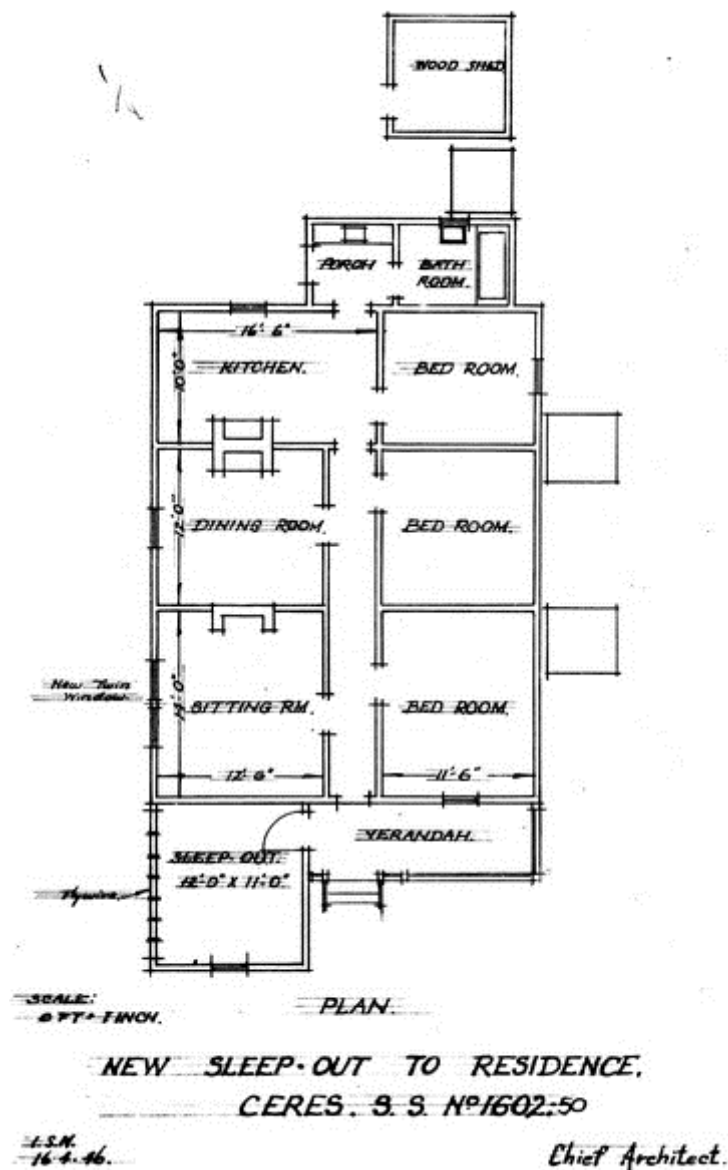


Figure 5: Proposed sleep out addition to Teacher's Residence, 16 April 1946

Source: Drawing SS 1602.50, Public Record Office Victoria.

The residence was removed after 1970.⁷⁰

Major Alterations to the School Building

In 1948, the school building suffered severe storm damage (Figures 6-7).⁷¹ The District Inspector for Schools, D.J. Gillard, gave the following report:

The chimney has been blown down on to the roof of the school; a large section fell through the slate roof and ceiling to the floor below, leaving a large hole in the ceiling.

⁷⁰ An aerial image of Ceres, December 1970, film 2457, Landata (Figure 18) showed that the cottage was still extant at that time.

⁷¹ Poyner, op.cit., p.54.

The chimney had been strapped to the roof and in consequence the whole roof has shifted. The walls have been strained badly, and large cracks were noted in the brick [sic. – stone] work.

The damage is extensive.⁷²

Photographs by the Public Works Department showed the extent of damage to the building, including the substantial damage to the roof and chimney.



Figure 6: West view of Ceres State School showing roof damage, 6 December 1948.

Source: VPRS 10516/P3 Unit 7 Public Record Office Victoria



Figure 7: Interior, Ceres State School showing roof damage, 6 December 1948. Source: VPRS 10516/P3 Unit 7 Public Record Office Victoria.

Record Office Victoria.

School students were initially conveyed by bus to the Highton State School until the roof of the local Temperance Hall at Ceres was repaired.⁷³ The Hall was subsequently leased by the Education Department and became the temporary school for the next two years.⁷⁴ Initially, there was a proposal to completely demolish the old stone school building and replace it with a timber school relocated from Marshall.⁷⁵ This proposal was soon reconsidered, as outlined in a letter by Thomas Maltby, M.L.A., to the Minister for Public Instruction in November 1948:

Residents of Ceres, near Geelong are concerned because of a proposal to demolish the local stone State School building, regarded as a landmark and worthy of preservation.

It is understood that it is proposed to move the new timber School from Marshall to Ceres and this too would cause dissent, because of the probability of new scholars being ready to attend Marshall School next year.

It is suggested that Ceres School be repaired, and Marshall School remain in situ long enough to determine whether young scholars are coming forward in sufficient numbers to justify its reopening.⁷⁶

Maltby's suggestion was also supported by the Public Works Department. It was 'of the opinion that the existing building is capable of many years of service.'⁷⁷ With scarcity of building materials following the

⁷² D.J. Gillard, Report on Ceres State School No. 1602, 6 September 1948, Education Department, Public Building file, op.cit.

⁷³ File note, Public Building file, op.cit.

⁷⁴ Ibid. See various correspondence, 1948-50.

⁷⁵ Ibid. T.K. Malby to W.S. Kent Hughes, Minister of Public Instruction, 16 Nov 1948.

⁷⁶ Ibid.

⁷⁷ Ibid. File note, 4 February 1949.

Ceres Heritage Citations Project 2017

PLACE NAME: Ceres Primary School

Place No. CER01

ADDRESS: 605 Barrabool Road, Ceres

Assessment Date: May 2017

Second World War, the Public Works Department found that the renewal of the roof was an economical proposition.⁷⁸

Percy Everett, Chief Architect of the Public Works Department, prepared a design for the remodelled school in late 1948 and early 1949 (Figures 8-10).⁷⁹ The design included a shallow hipped (flat) roof with broad projecting eaves and a raised shallow hipped (flat-roofed) portion with clerestory windows to provide natural light within the building's interior. Natural lighting was also enhanced by lowering (and therefore enlarging) the banks of windows on the front (north) and rear (south) elevations (Figures 11-16). The existing stone walls were repaired, new chimney constructed and a contemporary flat roof (to match that of the main building) replacing the previous gabled form on the front cloak room. A small porch was also added to the cloakroom at the front. The school reopened in early September 1950.⁸⁰

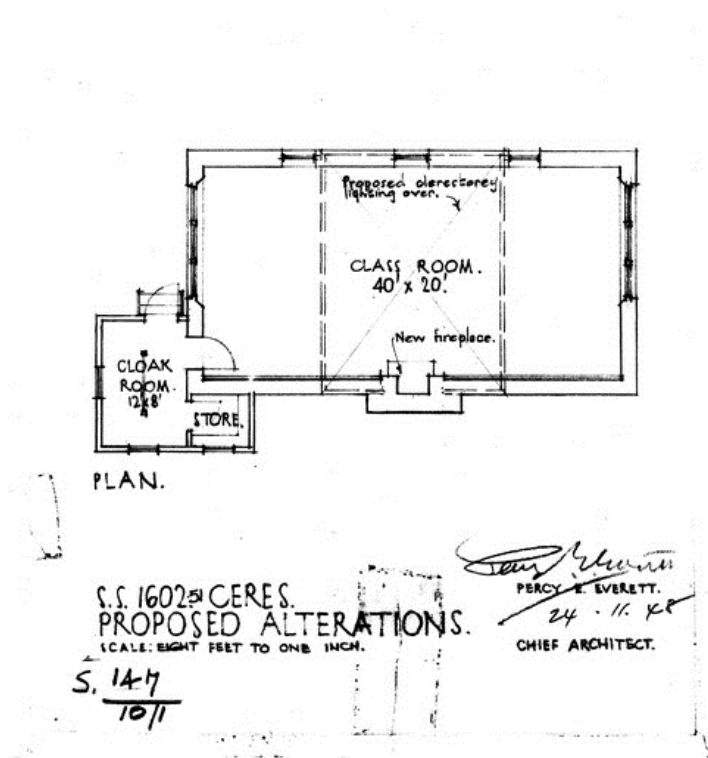


Figure 8: P. Everett, Proposed Alterations to Ceres School – Floor Plan, 24 November 1948

Source: Drawing SS 1602.51, Public Record Office Victoria.

78 Ibid.

79 See plan and elevation drawings dated 1948 and 1949, drawing nos. SSN1602.1-2, SS1602.51-52, Public Record Office, North Melbourne (Figures 8-10).

80 *The Age*, 8 September 1950, p.7.

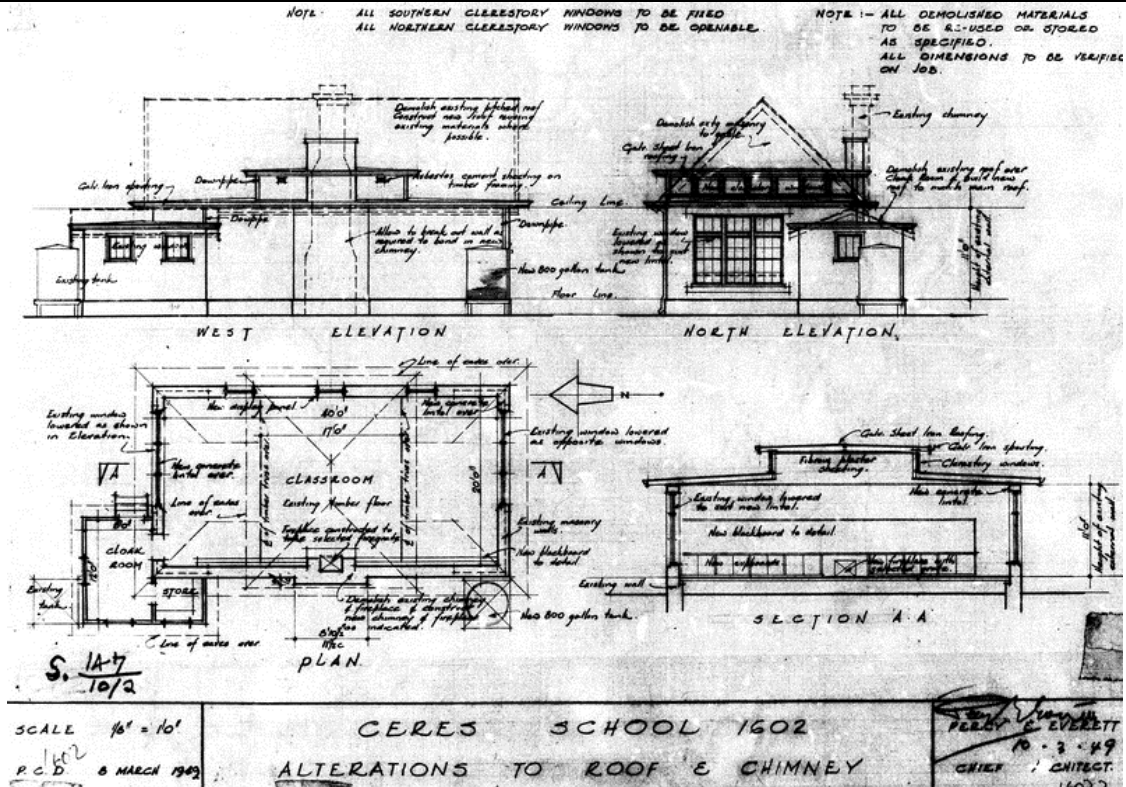


Figure 9: P. Everett, Proposed Alterations to Ceres School – Floor Plan, Elevations & Section, 10 March 1949, Source: Drawing SSN 1602.2, Public Record Office Victoria.

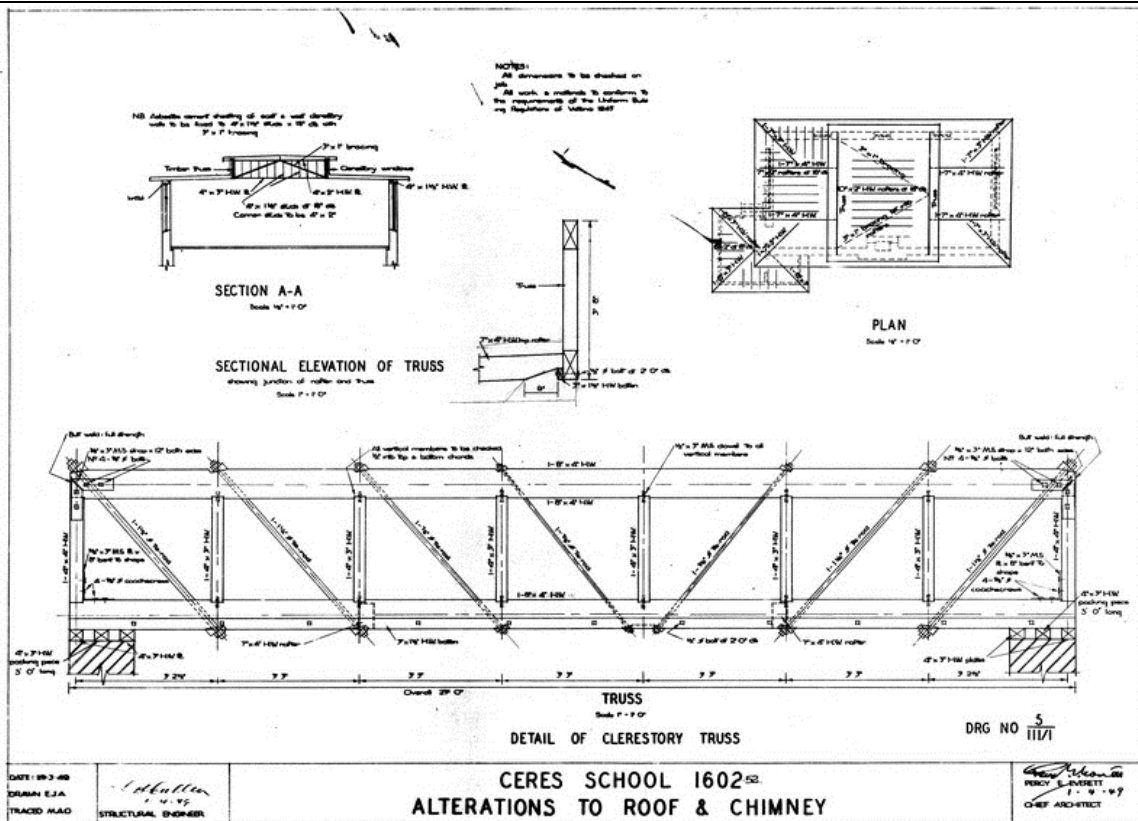


Figure 10: P. Everett, Proposed Alterations to Ceres School – Roof Plan, Section & Detail of Clerestory Truss, 1 April 1949, Source: Drawing SS 1602.52, Public Record Office Victoria.

Ceres Heritage Citations Project 2017

PLACE NAME: Ceres Primary School

ADDRESS: 605 Barrabool Road, Ceres

Place No. CER01

Assessment Date: May 2017



Figure 11: Ceres School under construction (front/north elevation), 15 Sept 1950.

Source: VPRS 10516/P3 Unit 7 Public Record Office Victoria.



Figure 12: Ceres School under construction (south & west elevations), 15 Sept 1950. Source: VPRS 10516/P3 Unit 7 Public Record Office Victoria.

Source: VPRS 10516/P3 Unit 7 Public Record Office Victoria.



Figure 13: Newly completed Ceres School (front elevation), 1950.

Source: VPRS 10516/P3 Unit 7 Public Record Office Victoria.



Figure 14: Newly completed Ceres School (front elevation), 1950. Source: VPRS 10516/P3 Unit 7 Public Record Office Victoria.

Source: VPRS 10516/P3 Unit 7 Public Record Office Victoria.



Figure 15: Newly completed Ceres School (south & west elevations), 1950. Source: VPRS 10516/P3 Unit 7 Public Record Office Victoria.

Source: VPRS 10516/P3 Unit 7 Public Record Office Victoria.



Figure 16: Newly completed Ceres School (south elevation) 1950. Source: VPRS 10516/P3 Unit 7 Public Record Office Victoria

Further renovations were proposed in 1955 to a design by John Firth, Chief Architect of the Public Works Department.⁸¹ This might have been the replacement of the shallow hipped roof of the raised section of the school building with a shallow-gabled roof (Figure 17). The cloak room at the front of the school was replaced with a larger gabled administration wing in the 1990s.⁸²



Figure 17 Ceres Primary School, front elevation, c.1993
Source: Late Ian Wynd photograph collection.

Beautification of the Grounds

It appears that pine trees were planted around the boundaries of the school grounds after the opening of the school building in 1875. Having matured, the invasive roots became problematic with the adjacent owner on the western boundary in 1914-15.⁸³ Instead of removing the trees, the Education

⁸¹ See drawing no. SSN1602.3, op.cit.

⁸² The cloak room was intact in c.1993 as shown in Figure 16. The administration wing was shown in a Site Analysis Master Plan by Bradbury Dicker Architects in 2000. See Public Building file, VPRS 16963/P1 Unit 293 Public Record Office Victoria.

⁸³ J.P. Leigh, to The Secretary, Ceres State School Committee, 16 December 1914, Public Building file, op.cit.

Ceres Heritage Citations Project 2017

PLACE NAME: Ceres Primary School

Place No. CER01

ADDRESS: 605 Barrabool Road, Ceres

Assessment Date: May 2017

Department purchase a narrow strip of adjoining land, with a post and wire fence erected along the new boundary.⁸⁴

Equally notable was the first recorded tree planting at the school in 1901. On 14 May of that year, the School held an official raising of the Union Jack, following an offer from Captain P. Chirnside, M.P., of 'The Manor', Werribee, to supply a flag for the school.⁸⁵ A flagpole was donated by W.F. Volum, President of the Barrabool Shire Council.⁸⁶ Following the raising of the flag, Peter McCann, Chairman of the Ceres Riding of the Board of Advice, planted a tree to commemorate the event.⁸⁷ The tree planted by McCann might have been the mature *Washingtonia Robusta* palm near the front of the old stone school building today.⁸⁸ Once planted, the *Geelong Advertiser* reported that the 'programme was now exhausted, and a day, perhaps the most remarkable, and certainly the most unique in the history of the school and district was brought to a close.'⁸⁹

Ceremonial tree planting and the beautification of the school grounds became an important part of school life in the ensuing years. Given the initial lack of space for the planting of trees, Arbor Day was celebrated at the neighbouring Barrabool Recreation Reserve in 1916.⁹⁰ There, the first tree was planted in memory of the late Earl Kitchener. Other trees were planted in honour of the local soldiers 'who had fallen and those still at the front'.⁹¹

In 1919, the School Committee sought approval from the Minister of Public Instruction to remove some pine trees and plant shrubs in the school grounds, except those trees on the west side.⁹² Approval was given so long as the new trees were of the 'more ornamental type' and the wood from the rooted out pines sold.⁹³ A further two rows of pine trees were later removed and on Arbor Day, 1922, 'two long rows' of Cypress trees were planted in their place.⁹⁴ Additional trees were also planted at the recreation reserve on this day.

In 1924, many shrubs and Cypress seedlings were planted on Arbor Day in the school grounds 'in the horticultural plots, which had been specially prepared by the head teacher (Mr Macartney) and the senior boys under his direction ...'⁹⁵ Councillor S.H. McCann was asked to speak at the occasion:

... he well remembered the first Arbor Day at the school, he was then a small boy, and his honoured father, long since deceased, planted the first tree and afterwards addressed the children; and who could say that some of the boys present, in the days to come, would have an opportunity to address another generation at a similar gathering.⁹⁶

84 *Geelong Advertiser*, 25 September 1915, p.3.

85 *Ibid.*, 16 May 1901, p.3.

86 A new flagpole was proposed in 1919. See A.B. McDowall to the Education Department, 1919, Public Building file, op.cit.

87 *Geelong Advertiser*, op.cit.

88 Phil Mulroyan, Supervisor, Geelong Botanic Gardens, to the author, February 2017, states that the palm tree at the Ceres School may be approximately 80 years old but with a lack of significant watering they can grow very slowly, and so this might suggest that the tree at the Ceres School is 100 or more years of age. An alternative possibility to the tree being planted in 1901 is that it formed part of the Arbor Day plantings at the School in the 1920s.

89 *Geelong Advertiser*, op.cit.

90 *Ibid.*, 7 July 1916, p.5.

91 *Ibid.* See also Barrabool Recreation Reserve heritage citation.

92 J.P. Leigh, Correspondent, to the Minister for Education, 25 August 1919, Public Building file, op.cit.

93 *Ibid.* J. Dew, District Inspector, to The Director of Education Department, 8 September 1919.

94 *Geelong Advertiser*, 13 July 1922, p.8.

95 *Ibid.*, 5 July 1924, p.3.

Ceres Heritage Citations Project 2017

PLACE NAME: Ceres Primary School

Place No. CER01

ADDRESS: 605 Barrabool Road, Ceres

Assessment Date: May 2017

It seems that the 'many shrubs' were planted as part of a formal garden at the front of the school as shown in Figure 12.

Another important development in the school grounds was the installation of a tennis court on the rear boundary in 1925.⁹⁷ A fundraising concert was held in the Temperance Hall in July of that year and by later September 1925 the court 'was expected to be ready for play ...'⁹⁸

As space in the school grounds was again limited for tree planting to mark Arbor Day in 1926, 'the men folk were employed to trimming the hedges round the school',⁹⁹ suggesting that the Cypresses planted in previous years had been formed into hedges. It also appears that an ornamental garden had been established at the front of the school, the efforts of earlier Arbor Days. This garden was shown on a rough sketch of the school site in 1946 (Figure 18). It showed the gardens flanking the front pathway, together with the perimeter tree plantations, location of the 'residence block' and shelter shed, playing spaces, toilet blocks and two proposed poultry sheds.

96 *Ibid.* Cr. S.H. McCann (born 1872) may not have been a small boy at the time of the tree planting. It seems that the tree planted by his father, Peter McCann, was that planted in celebration of the raising of the Union Jack in 1901.

97 *Ibid.*, 6 July 1925, p.6.

98 *Ibid.*, 11 September 1925, p.9.

99 *Ibid.*, 1 July 1926, p.8.

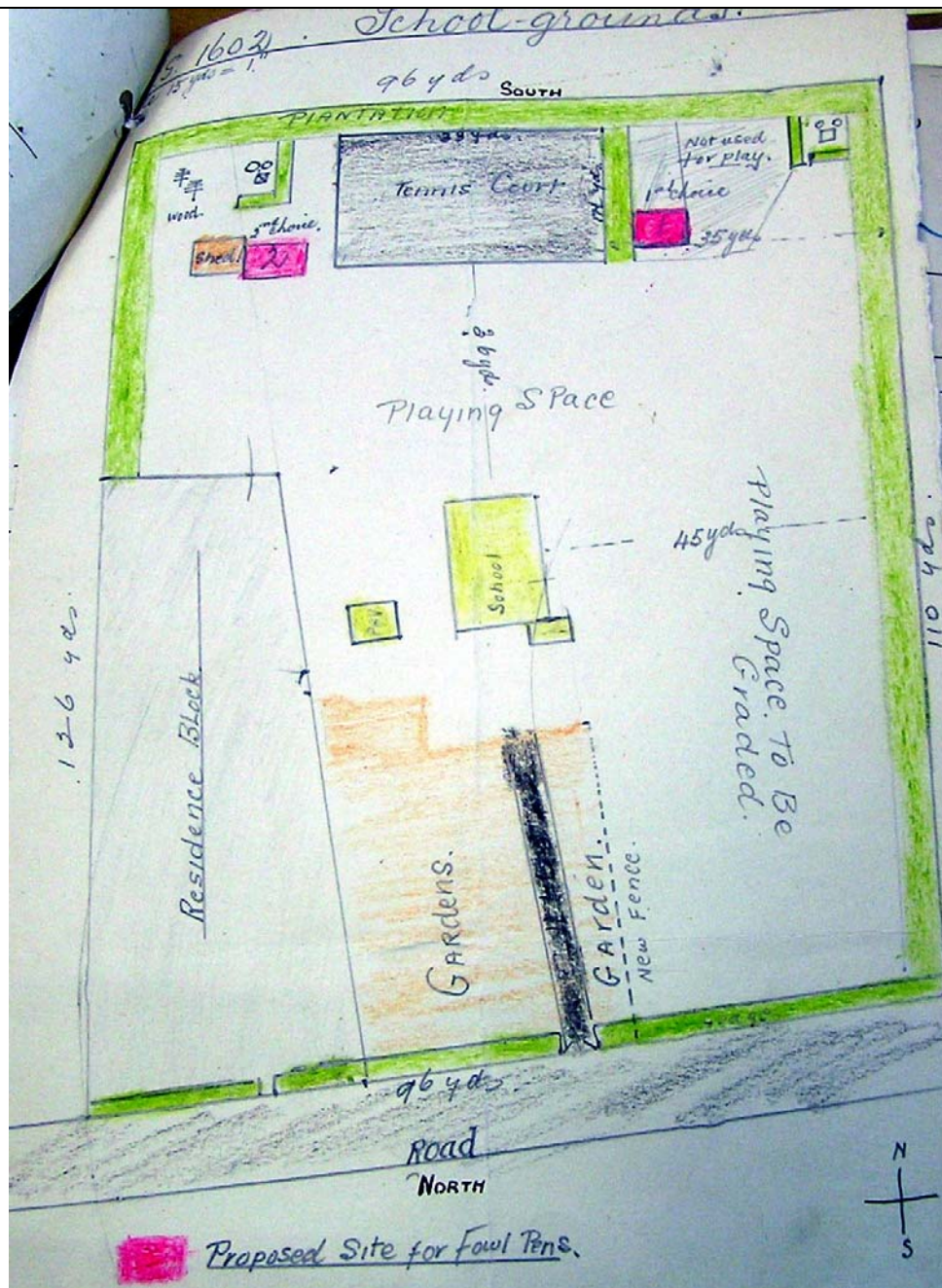


Figure 18 Schematic Site Plan of the Ceres State School, 1946.

Source: Public Building file, VPRS 795/P0 Unit 2287 Public Record Office Victoria.

In 1932, the School Committee proposed the demolition of an old shelter shed and the construction of new pavilion.¹⁰⁰ Approval was given by the Education Department and a design was provided by Percy Everett, Chief Architect of the Public Works Department.¹⁰¹ The tender of Lyons Brothers and Carroll, Oxford Street, Belmont, was accepted in early May 1934 for the modest, hipped-roofed timber structure.¹⁰² The shelter shed was shown in photograph of 1948 (Figure 3). The roof was clad in galvanised corrugated steel and there were broad eaves with exposed timber rafters. The upper

100 Correspondence, 1923-34, Public Building file, op.cit.

101 Ibid. The Secretary, Education Department, file note, 19 February 1932. The file note did not identify Everett as the designer but the design of the shelter shed at Ceres was identical to others he designed elsewhere – see Comparative Analysis.

102 *Geelong Advertiser*, 8 May 1934, p.5.

Ceres Heritage Citations Project 2017

PLACE NAME: Ceres Primary School

Place No. CER01

ADDRESS: 605 Barrabool Road, Ceres

Assessment Date: May 2017

portions of the timber weatherboard walls were clad in timber lattice screens. There was a large central opening at the front.

By 1970, an aerial image (Figure 19) showed that the school site was bound by mature trees on the south and west sides only, with a hedge having been planted on the front (north) boundary. There was no row of trees on the east boundary. The tennis court still existed at the rear of the site (it was not replaced by the existing basketball court until later years) and there were large open grassed play areas in the front north-west corner of the site and behind the school building.



Figure 19 Aerial view of the Ceres Primary School, December 1970.

Source: Part aerial of Ceres, Film 2457, Landata, with Creative Commons Copyright

<https://creativecommons.org/licenses/by-nc/4.0/>

Recent Developments

In 2000, Bradbury Dicker Whitnall Architects were engaged to prepare a Masterplan for the school.¹⁰³ A site plan was prepared (Figure 20), showing the existing buildings and landscaping at that time. It included the centrally located stone school building with front administration wing, and a three portable classrooms and art shed flanking the east and west sides of the old stone building. There was a playground on the west side, a sand pit with shade structure and car parking at the front, while on the east side, in addition to the classroom and art shed was an underground water tank, old shelter shed and mature palm tree (the tree being located in front of the old stone school building). At the rear were detached toilets and sheds, a large sports oval and a basketball court in the south-east corner.

¹⁰³ See Public Building file, op.cit.

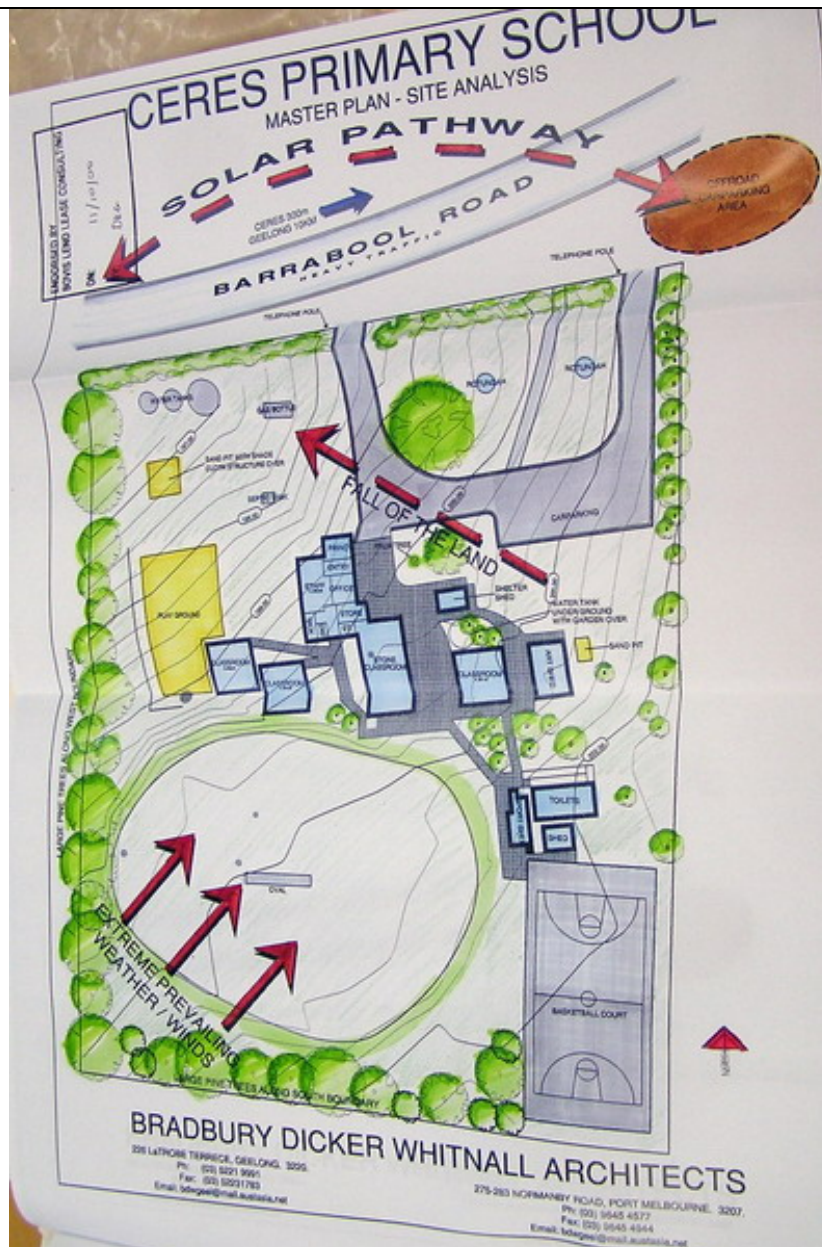


Figure 20: Bradbury Dicker Whitnall Architects, Ceres State School Site Analysis, 2000 .

Source: Public Building file VPRS 16963/P1 Unit 293 Public Record Office Victoria.

In 2001, the Bradbury Dicker Group, architects, prepared a design for two new classrooms to the south west of the old stone building.¹⁰⁴ It was to be connected to the old school by an entrance and amenities wing (Figure 21). This masonry building was built in 2004 and it was at this time that the administration wing was upgraded. Portable classrooms were relocated to accommodate the new building. In 2011, a two-room portable classroom was also constructed on the site, and new shade sail structures were erected and a running track installed.¹⁰⁵

104 Ibid.

105 See Ceres Primary School website, January 2017: <http://ceresps.vic.edu.au/about/>

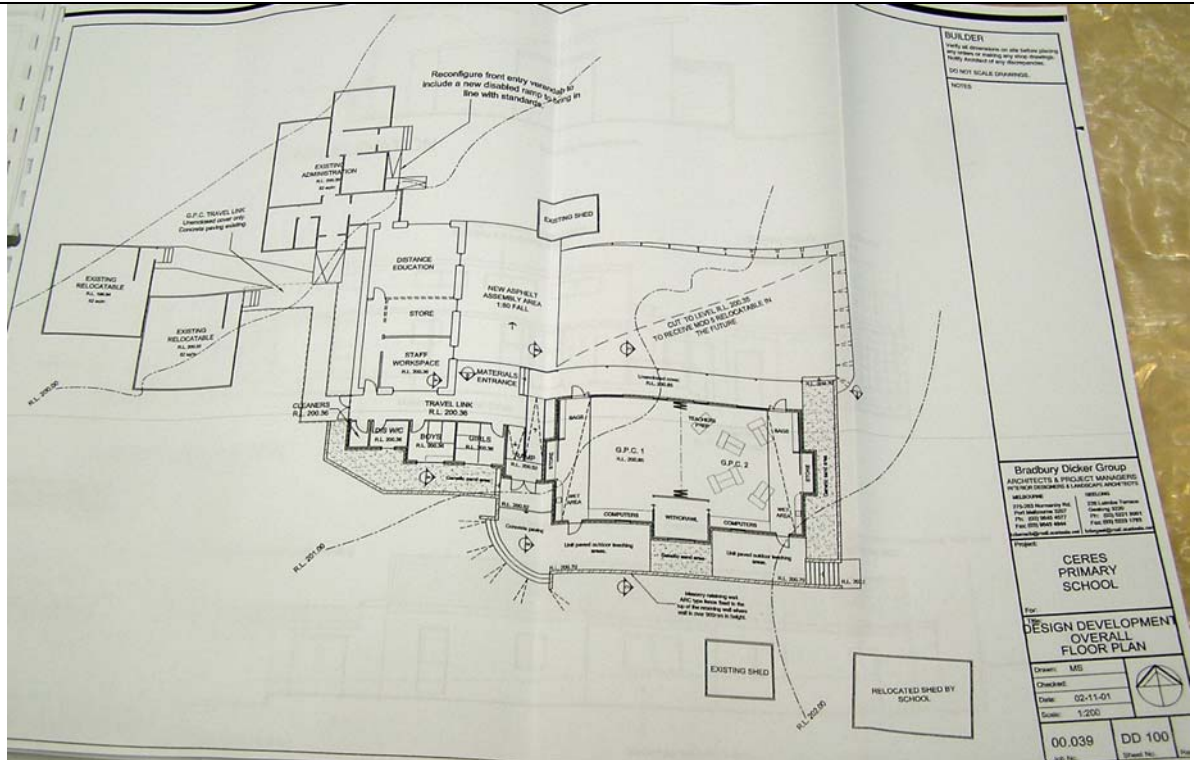


Figure 21: Bradbury Dicker Architects, Ceres State School Design Development Overall Plan, 2001 .

Source: Public Building file VPRS 16963/P1 Unit 293 Public Record Office Victoria.

COMPARATIVE

Other Comparable State School Buildings

Other Single Room 19th Century State School Buildings

The surviving original fabric of the early Ceres School building – Barrabool stone walls and the timber framed 12 paned double hung windows – are a physical legacy of the standard, gabled, single room Victorian Education Department schools designed by Henry Bastow in the 1870s. Given the substantial alterations that were carried out in 1949-50, there are a small number of more intact examples of the type built in the 1870s in the Greater Geelong area. They include the former Fyansford (100 type, bluestone construction) and Batesford (brick construction).¹⁰⁶

Other Postwar State School Buildings

During the Second World War, the Minister for Public Instruction forecast a need ‘for a comprehensive [school] rebuilding program, in which many school buildings would have to be demolished and new ones erected.’¹⁰⁷ The old buildings were considered to be ill-lit and badly ventilated.¹⁰⁸ Following the war there was a critical shortage in building materials and yet a substantial increase in school enrolments.¹⁰⁹ In 1948 in an effort to solve the problem, Minister for Public Instruction and the Director of the Education Department, together with two Melbourne architects, Lloyd Orton and A. Armstrong, visited Hertfordshire in the United Kingdom. They found that ‘the standardised planning and pre-fabrication methods of building construction offered a solution to the demand for more classrooms.’¹¹⁰ In the

¹⁰⁶ F. O’Neill, Memorial to Graham Bowley, DRNE, Geelong, 13 Mar 1997, City of Greater Geelong Statutory Planning Department & A. Willingham, *Geelong Region Historic Buildings and Objects Study*, vol. 1, Geelong Regional Commission, Geelong, 1986, sheet 120.

¹⁰⁷ L.J. Blake, ‘The Primary Division’ in L.J. Blake (ed.), *Vision and Realisation: A Centenary History of State Education in Victoria*, vol.1, Education Department of Victoria, Melbourne, 1973, p.385.

¹⁰⁸ *Ibid.*

¹⁰⁹ *Ibid.*, pp.385-386.

¹¹⁰ *Ibid.*

Ceres Heritage Citations Project 2017

PLACE NAME: Ceres Primary School

Place No. CER01

ADDRESS: 605 Barrabool Road, Ceres

Assessment Date: May 2017

interim, Army huts were converted to classrooms.¹¹¹ In December 1949, 195 double-unit prefabricated classrooms were ordered from the Bristol Aircraft Company in order to provide much-needed and relatively economical building accommodation.¹¹²

In the meantime in 1949, the Chief Architect of the Public Works Department, Percy Everett, devised a new approach to school planning and design. His approach was to provide a 'more efficient grouping or zoning of classrooms' 'to enable pupils and teachers to obtain the best results.'¹¹³ He outlined the new approach to long term school building:

Among the features of modern planning is improved natural lighting to brighten more colourful classroom interiors. Ribbon windows, extending continuously along each elevation, having replaced those vertical slits which appeared in the ancient buttressed walls. There are now greater areas of windows than walls.

Embellishment has been entirely eliminated. Simple horizontal lines with more pleasing proportions have been substituted for the tall gables and turrets of the old-timers.

Flat roofs, giving diffused natural lighting to classroom interiors, have superseded the steep roofs with their brittle coverings.

Victoria was the first State in the Commonwealth to adopt the contemporary form of school building from plans and designs which I initiated when schools of the type of the Yallourn Technical School and the art and craft school at Shepparton were first introduced.¹¹⁴

One of the earliest rural designs by Everett following the new modern postwar regime was the Timboon Consolidated and Secondary School, designed by August 1949 and opened in 1950 (Figure 22).¹¹⁵ It was considered to be 'the most modern in the State', setting 'a standard for rural centres.'¹¹⁶ Architecturally, the Timboon School was contextually substantial in scale, being two storied and constructed of brick. It reflected Everett's Modern Functionalist approach in the emphasis on proportions and lines in favour of decoration, cuboid forms, flat roofs (including raised flat-roofed portions with clerestorey windows) and banks of horizontally-aligned windows. The largely rectangular form was juxtaposed by a projecting curved bay.

111 *Ibid.*, p.386.

112 Peterson, et.al., op.cit., p.99.

113 P. Everett, 'New Planning Improves School Architecture' in *The Age*, 15 August 1949, p.2.

114 *Ibid.*

115 *Ibid.* & 14 November 1950, p.7.

116 *Ibid.*

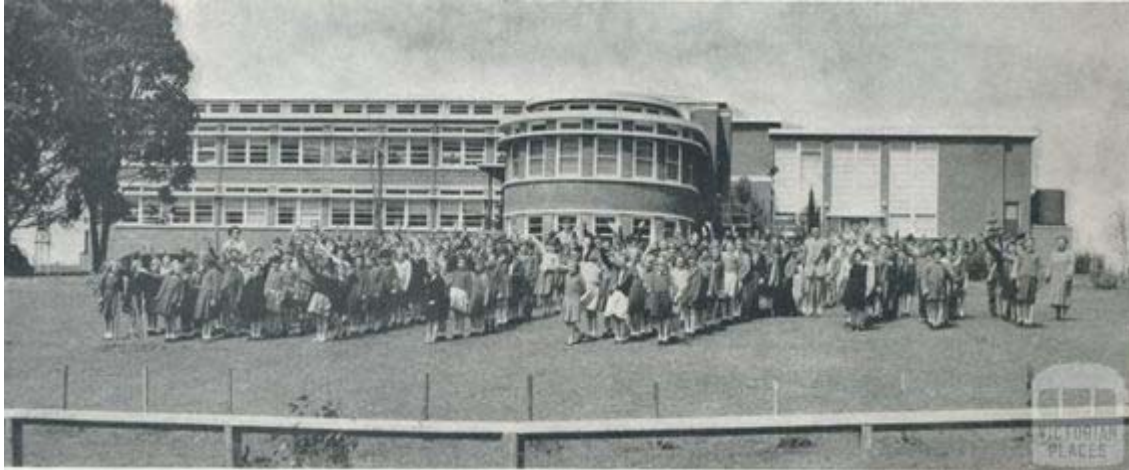


Figure 22: Timboon Consolidated and Secondary School, 1958.

Source: Victorian Places online at <http://www.victorianplaces.com.au/timboon>

While the Ceres School shares little resemblance in construction, scale and layout to the Timboon School, it is comparable as another very early rural example of Everett's use of flat roof forms, clerestorey windows and banks of windows, albeit in a more conservative and modest way, the plan being constrained by the original layout and stone walls of 1875.

Everett also designed other State and Infant Schools in this newly-created modern mode in 1949-50. The Balwyn North Primary School (Figure 23) shares the similar broadly project flat roofs, raised roof portions with clerestorey windows, and banks of other windows as the Ceres School, but being purpose-built, the layout and design is more dynamic in the stepped forms, vertical element, cream brick walls and streamlined window details.

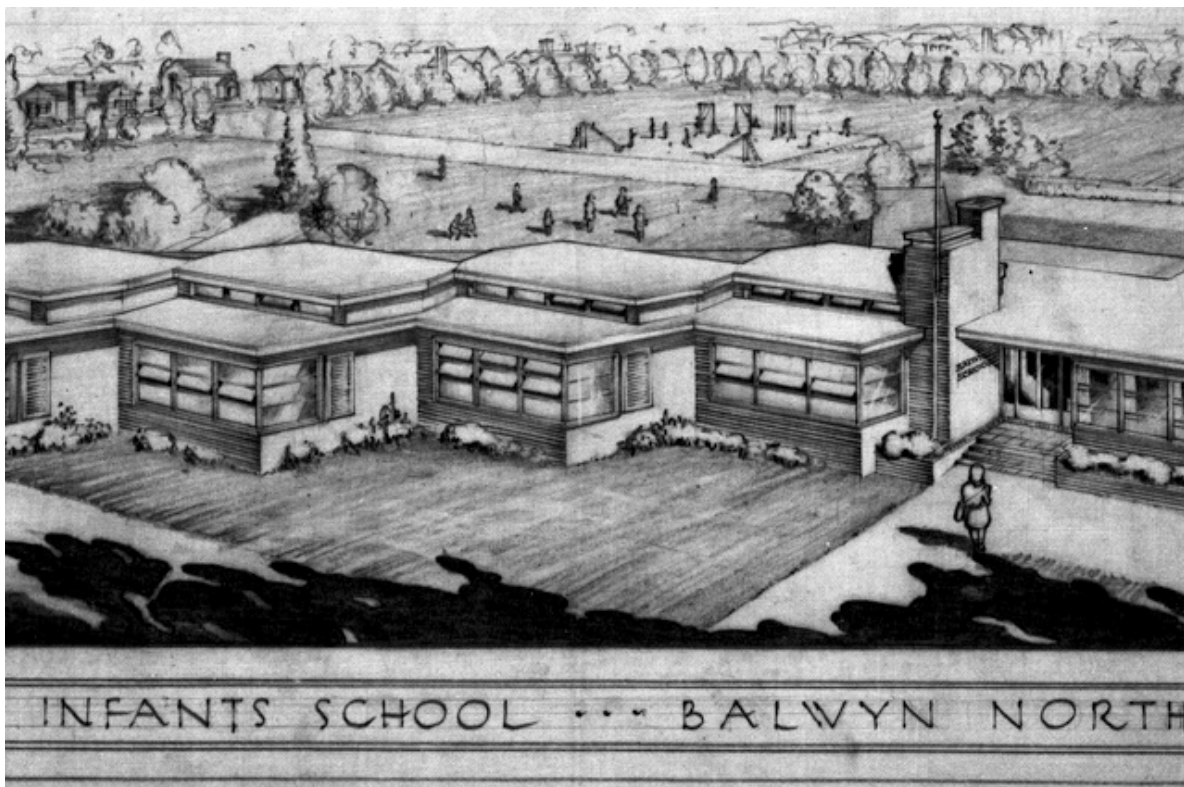


Figure 23: P. Everett, Perspective drawing of proposed Infants School, Balwyn North, 1948.

Source: Architectureau online, January 2017: <http://architectureau.com/articles/designing-australian-schools/>

Ceres Heritage Citations Project 2017

PLACE NAME: Ceres Primary School

Place No. CER01

ADDRESS: 605 Barrabool Road, Ceres

Assessment Date: May 2017

An equally dynamic composition was given by Everett for the design of the Moorabbin West State School. The Argus claimed it to be the 'newest and best State school' in 1950, with its series of brick and glass L-shaped wings oriented to capture the sun.¹¹⁷ The flat roofs with broad eaves and raised roofed portions with clerestorey windows were those comparable features to the Ceres School. Yet, like the Balwyn North Primary School, overall, the Moorabbin West School was a more substantial, purpose-built school that was not comparable to the Ceres school. It closed in 1993 and the site was sold to become a housing estate.¹¹⁸

The South Yarra State School opened a new wing in 1950 following a fire that partly damaged an earlier building in 1946.¹¹⁹ At the opening, the Minister for Education 'contrasted the fine modern, well-lit and equipped school, with the old-fashioned ill-lit building which had been destroyed.'¹²⁰ The elongated flat-roofed building with eave overhangs and raised shallow-gabled roofed section with clerestorey windows were those specific features also identified on the Ceres School. Overall, the layout, stepped configuration, construction and scale of the South Yarra addition is not comparable to the Ceres School. The South Yarra School building has recently been altered and extended by Burlak Constructions.¹²¹

Overall, the Ceres Primary School is not directly comparable to any of the standard one-room gabled school designs built during the Bastow era of the Education Department in the 1870s, or the early postwar Modern school designs by Percy Everett in the late 1940s. Instead, it is an amalgam of both architectural eras, the stone walls and side windows reflective of the 19th century design, the principal character and appearance being an embodiment of the Everett's new approach in the flat roofs with broad eaves, raised roof portion with clerestorey windows and the banks of windows. There are more intact examples of both types in Victoria although the Ceres school is a legacy in combining original 19th century fabric as part of the new design; in part due to community sentiment to the old building in the 1940s and a consequence of a shortage in building materials following the Second World War.

Other State School Interwar Shelter Sheds

Shelter sheds for State School appears to have been almost ubiquitous during the late 19th century in the construction of octagonal timber pavilions with either polygonal or gambrel roofs.¹²² The provision of these structures for shade continued into the early 20th century. The shelter shed at Ceres built in 1934 followed a familiar construction method with timber weatherboard walls, the upper portions screened with timber lattice. A notable change from the 19th century model was the construction of hipped or gambrel roof forms on a rectangular plan. All of these structures appear to have been designed by the Chief Architect of the Public Works Department, Percy Everett. Other similarly laid out and roofed State School pavilions constructed in the 1920s and 1930s in Victoria included those at Auburn Primary School (built 1930)¹²³ and Dixons Creek built in 1935 (Figure 24).¹²⁴ It is unclear whether this shed at the Dixon Creek School is extant. Overall, it appears that the shelter shed at the Ceres School is one of few known surviving in the Greater Geelong area, and potentially a rare example from the interwar period across the State.

117 *The Argus*, 7 March 1950.

118 See 'Lost Schools of the 1990s', Learning from the Past, <http://learningfromthepast.com.au/lost-schools-of-the-1990s/>, January 2017.

119 *The Age*, 23 March 1950, p.2.

120 *Ibid.*

121 The alterations and additions are shown on the website of Burlak Constructions: <http://burlakconstructions.com.au/projects/sth-yarra-ps>.

122 Blake, op.cit., p.265 claims that in the early years from the 1870s schools lacked shelter sheds, 'although several Boards of Advice endeavoured to contrive these ...'

123 'Auburn Primary School No. 2948', Victorian Heritage Database online, January 2017.

124 P. Everett, 'Proposed Shelter Shed, Dixons Creek State School No. 1585', Building Services Agency (BSA) drawing, SSO1585.2, Public Record Office Victoria, North Melbourne.

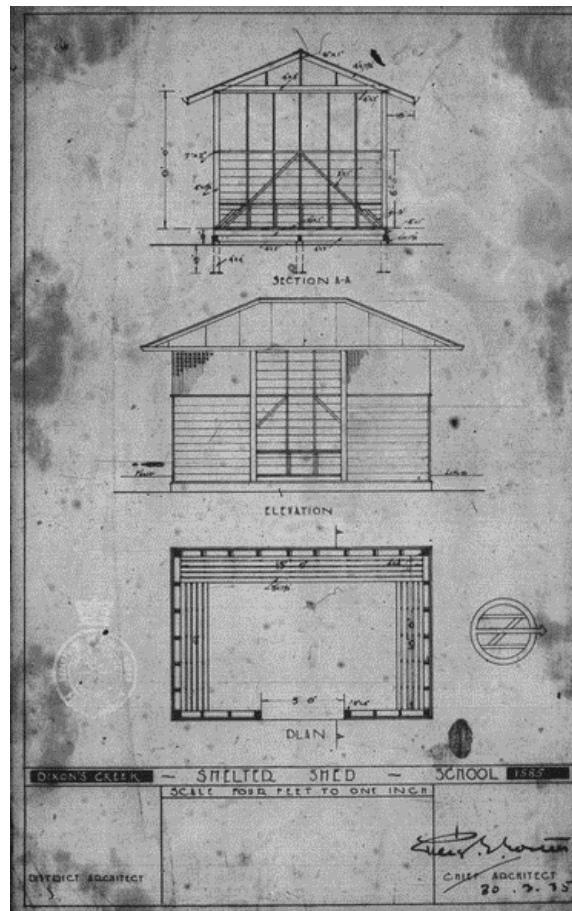


Figure 24: P. Everett, Plan, Elevation & Section A-A drawing of proposed Shelter Shed, Dixons Creek State School, 30 March 1935. Source: Building Services Agency (BSA) drawing, SSO1585.2, Public Record Office Victoria.