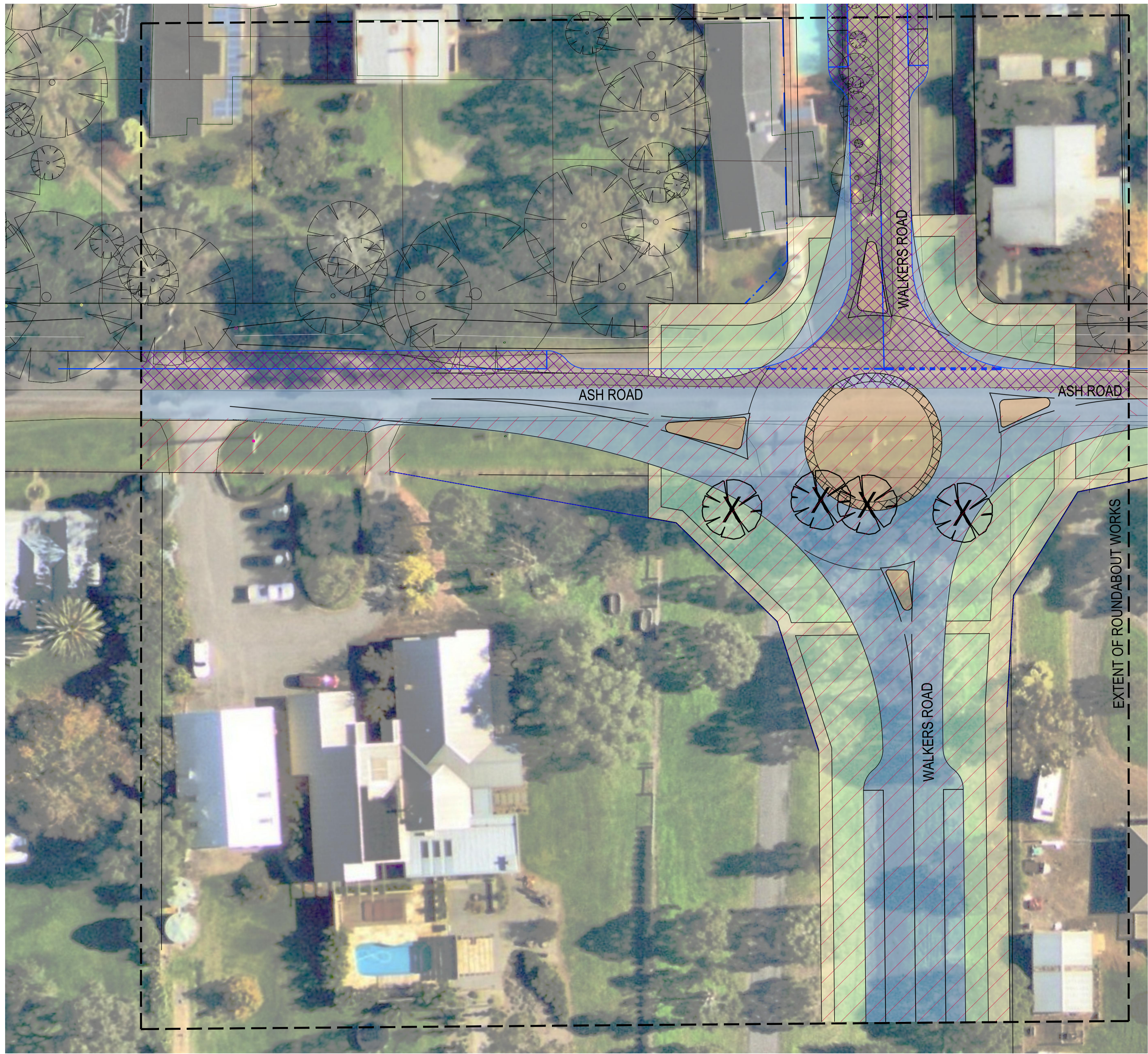
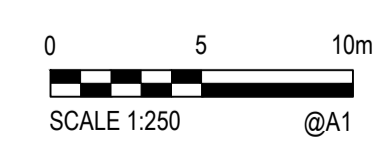
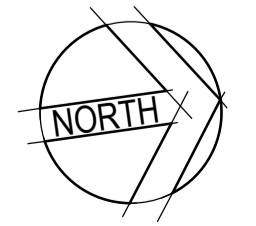


XREFs: V171945-TR-XR-PF01; V171945-TR-XR-EA01-01 Current - Moved; V171945-TR-XR-CB01-01 Current; V170871-TR-XR-EF01; 14983_FEATURE_REESTAB_V01; V170871-TR-XR-EA01-01 Current; V170871-TR-XR-EA01-01 Current; V170871-TR-XR-EF01-01 Current; V170871-TR-XR-PA01-01 Current; GSTOLOGO
 CAD File: M:20171501_2000\171945_Ash_Road_Leppard_East\Civil\Drafting\Sketches\171945-CI-SK01-SK03.dwg
 DATE PLOTTED: 30 July 2019 8:46 AM BY: ELISSA-SIMONE HU



LEGEND
REFER DETAIL DRAWING No *****

	ASPHALT PAVEMENT
	ASPHALT OVERLAY
	FOOTPATH CONCRETE PAVEMENT
	CONCRETE INFILL
	LANDSCAPE AREA
	CLEANING AND GRUBBING
	PAVED TRAFFIC ISLAND
	C280 RESPONSIBILITY



© Cardno Limited All Rights Reserved.
 This document is produced by Cardno Limited solely for the benefit of and use by the client in accordance with the terms of the retainer. Cardno Limited does not and shall not assume any responsibility or liability whatsoever to any third party arising out of any use or reliance by third party on the content of this document.

Cardno Victoria Pty Ltd | ABN 47 106 610 913
 Level 4, 501 Swanston Street
 Melbourne VIC 3000
 Tel: 03 8415 7777 Fax: 03 8415 7788
 Web: www.cardno.com.au

EASTERN ASH PTY LTD			
PROPOSED ROUNDABOUT AT WALKERS ROAD AND ASH ROAD LEOPOLD EAST			
Date	Scale	Size	
30.07.2019	1:250	A1	
Drawing Number	Revision		
V171945-CI-SK01	2		