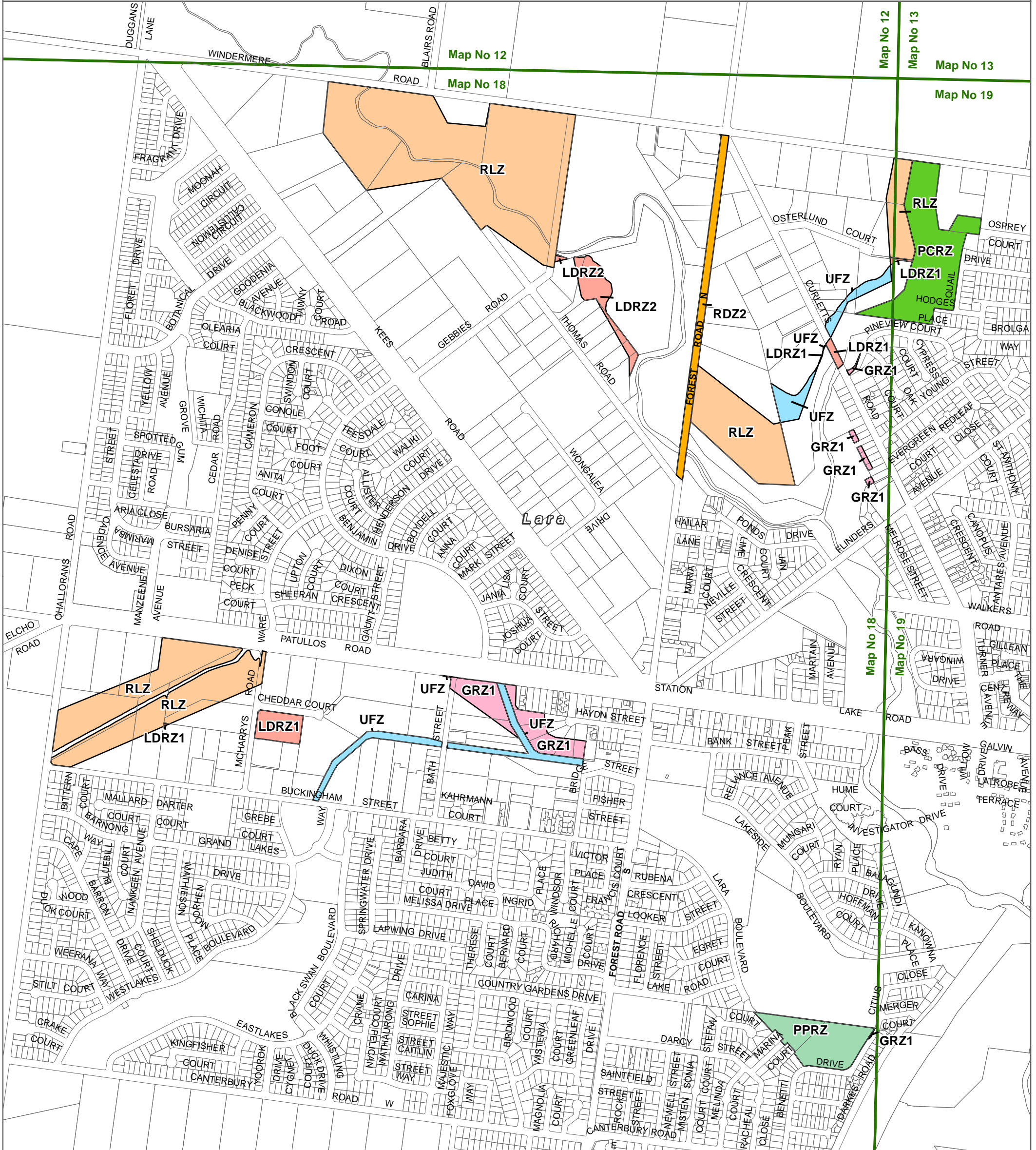










GREATER GEELONG PLANNING SCHEME - LOCAL PROVISION AMENDMENT C339ggee



LEGEND

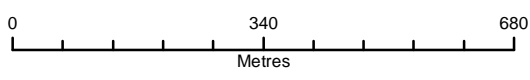
 GRZ - General Residential Zone	 RDZ2 - Road Zone-Category 2
 LDRZ - Low Density Residential Zone	 RLZ - Rural Living Zone
 PCRZ - Public Conservation and Resource Zone	 UFZ - Urban Floodway Zone
 PPRZ - Public Park and Recreation Zone	 Local Government Area



Part of Planning Scheme Maps 18 & 19

Disclaimer
This publication may be of assistance to you but the State of Victoria and its employees do not guarantee that the publication is without flaw of any kind or is wholly appropriate for your particular purposes and therefore disclaims all liability for any error, loss or other consequence which may arise from you relying on any information in this publication.

Planning Group
Print Date: 19/04/2021
Amendment Version: 4



Environment,
Land, Water
and Planning