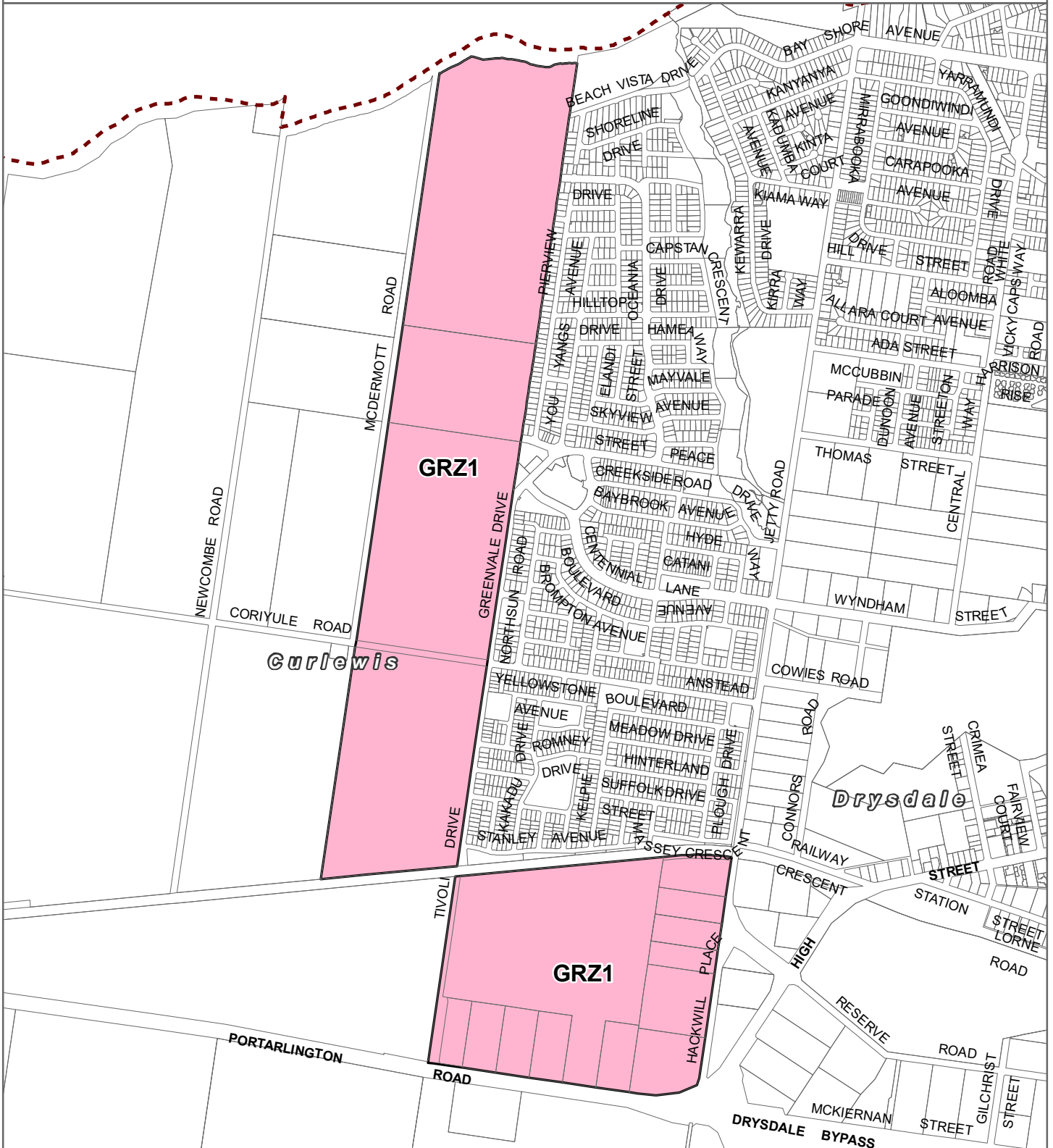


GREATER GEELONG PLANNING SCHEME - LOCAL PROVISION AMENDMENT C387gee



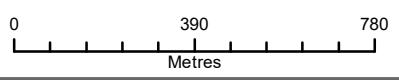
- LEGEND**
- GRZ - General Residential Zone
 - Local Government Area



Part of Planning Scheme Map 59

Disclaimer
This publication may be of assistance to you but the State of Victoria and its employees do not guarantee that the publication is without flaw of any kind or is wholly appropriate for your particular purposes and therefore disclaims all liability for any error, loss or other consequence which may arise from you relying on any information in this publication.

Planning Group
Print Date: 9/21/2022
Amendment Version: 1



Environment,
Land, Water
and Planning