

91-125 Coriyule Road Curlewis

Vegetation Assessment

A Report to
Curlewis Bellarine Pty Ltd

Prepared by

Mark Trengove Ecological Services
PO Box 1502 Geelong 3220
mtrengove@pipeline.com.au
ph 0428 298087

July 2022

Contents

1	INTRODUCTION	4
1.1	Project Background	4
1.2	Objectives.....	4
1.3	Study Area.....	4
1.4	Proposed Development.....	5
2	METHODS.....	6
2.1	Taxonomy	6
2.2	Literature and Database Review.....	6
2.3	Field Survey	6
2.4	Limitations	6
2.5	Defining Significance.....	6
2.6	Defining and Assessing Vegetation.....	7
3	RESULTS.....	8
3.1	Ecological Vegetation Class.....	8
3.2	Flora	9
3.3	Vegetation Condition	9
3.4	Trees	10
3.5	Significant Flora.....	11
4	Native Vegetation Permitted Clearing Regulations	12
	Figure 3.....	13
4.1	Patch Native Vegetation	14
4.2	Scattered Tree Native Vegetation	14
4.3	Implications	14
	Figure 4 Location of native vegetation	15
5	CONCLUSIONS	16
	Appendix 1 - ASSESSING CONSERVATION SIGNIFICANCE	17
	Appendix 2 Determining the Tree Protection Zone.....	18
	Appendix 3 Summary of Mapped Native Vegetation.....	19
6	REFERENCES	25
	Plates 1-3 Vegetation Photographs	26

Mark Trengove Ecological Services
PO Box 1502 Geelong 3220
mtrengove@pipeline.com.au
ph 0428 298087

Copyright © Mark Trengove Ecological Services

This document is subject to copyright and may only be used for the purposes for which it was commissioned. The use of this document in whole or part without the permission of Mark Trengove Ecological Services is an infringement of copyright.

Disclaimer

Although Mark Trengove Ecological Services have taken all the necessary steps to ensure that an accurate document has been prepared, no liability is accepted for any damages or loss incurred as a result of reliance placed upon the report or its contents.

1 INTRODUCTION

1.1 *Project Background*

An area of land, located at 91-125 Coriyule Road Curlewis, is proposed to be developed as a residential sub division. This report was commissioned by Curlewis Bellarine Pty Ltd to determine any implications for the removal of native vegetation at the subject site.

Under Clause 52.17 of the Planning Scheme, the State has gazetted the Native Vegetation Removal Regulations (revised in December 2017). The Regulations ‘introduce a risk based approach to assessing applications to remove native vegetation’ (DELWP Website i)

Refer to Section 4 for further discussion.

1.2 *Objectives*

The objectives of this investigation are to:

- Describe the flora values of the land.
- Evaluate the conservation significance of the land.
- Assess any potential impacts of the proposed development.
- Discuss the implications of relevant government policy and legislation.
- Determine any native vegetation offset implications.

1.3 *Study Area*

The study area is comprised of approximately 26 ha of land located at 91-125 Coriyule Road Curlewis, located within the City of Greater Geelong. The site is Zone Farm Zone (FZ) under the City of greater Geelong Planning Scheme (Land.vic website i).

The site is within the Otway Plains bioregion and is located within the Corangamite Catchment Management Authority region (Department of Environment, Land, Water and Planning [DELWP] website ii).

The site appears to have a history of agricultural use and having been subjected to significant disturbance (pasture improvement). However, areas of partially intact indigenous vegetation, dominated by River Red Gum and Manna Gum, remain.

The location of the study area is shown on Figure 1.

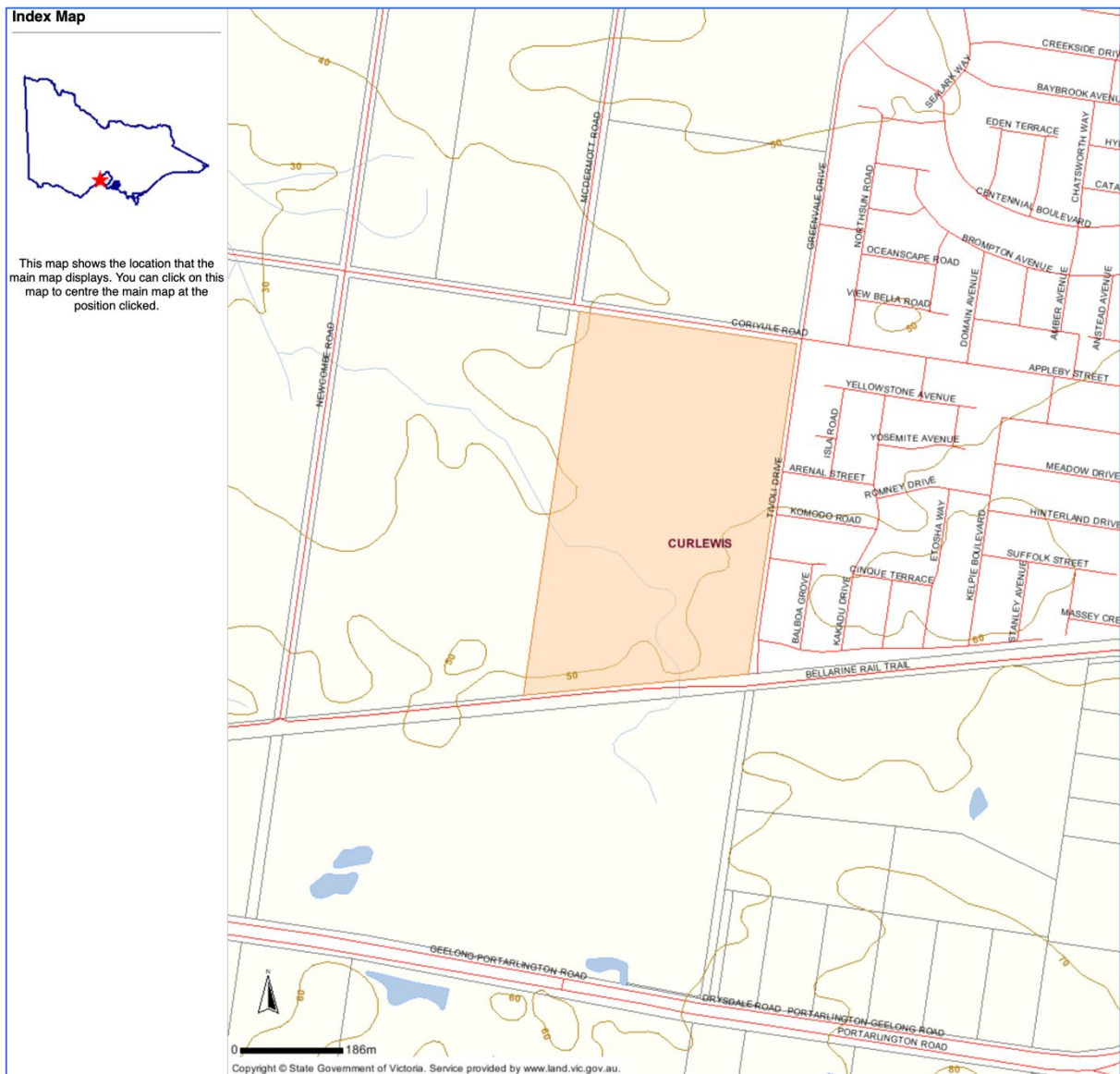


Figure 1. 91-125 Coriyule Road Curlewis, shown in dark.

1.4 Proposed Development

The proposed land use is to create a residential sub division.

2 METHODS

2.1 Taxonomy

Scientific names for plants follow the Flora of Victoria (RBG website). Common names for plants follow the Flora of Victoria Vols 2-4 (Walsh and Entwisle 1994-1999).

2.2 Literature and Database Review

Relevant literature, online resources and databases were reviewed to provide an up to date assessment of ecological values associated with the study area and surrounds, including:

- The Victorian Department of Environment, Land, Water and Planning (DELWP) NVIM tool (DELWP website ii) for:
 - Modelled data for remnant vegetation patches and habitat for rare or threatened species and
 - the extent of historic and current Ecological Vegetation Classes (EVC)s.
- The Victorian Biodiversity Atlas (VBA) (DELWP website iii) for previously documented flora and fauna records within the project locality (to approximately 10 kilometres of the study area)
- Aerial photography of the study area (Google maps).

2.3 Field Survey

The site was inspected on foot on the 2nd of April 2019. The entire site was traversed. Records were made of all indigenous vascular plant species. Records were made of the existing habitat values and dominant exotic vascular plant species. The location of areas of native vegetation were mapped.

2.4 Limitations

The assessment was conducted during autumn, a time of year that are suitable for the detection of most but not all flora species likely to occur on site. The site was unslashed and mostly ungrazed at the time of survey. The survey includes only vascular flora.

Due to the relatively degraded condition of the study area vegetation, the site inspection is considered sufficient to assess the ecological values of the proposed impact site. As a result, for the purposes of assessing the proposed impact site, there are not considered to be any significant limitations to the study.

2.5 Defining Significance

A number of criteria are applied in order to assess the significance of flora species and vegetation communities. The definition of the criteria is detailed in Appendix 1.

2.6 Defining and Assessing Vegetation

Native vegetation in Victoria has been defined by DELWP as belonging to two categories. These are:

Patch native vegetation

A patch of native vegetation is either:

- any area of vegetation where at least 25 per cent of the total perennial understorey plant cover is native
- any area with three or more native canopy trees where the canopy foliage combines
- Any area of wetland as defined by current DELWP mapping.

Scattered tree native vegetation

Scattered tree native vegetation is:

- a native canopy tree that does not form part of a patch.

Habitat hectares

Habitat hectares (Vegetation Quality Assessment) is a site-based measure that combines extent and condition of native vegetation. The current condition of native vegetation is assessed against a benchmark for its Ecological Vegetation Class (EVC). EVCs are classifications of native vegetation types. The benchmark for an EVC describes the attributes of the vegetation type in its mature natural state, which reflects the pre-settlement circumstances. The condition score of native vegetation at a site can be determined through undertaking a habitat hectare assessment.

The habitat hectares of native vegetation is calculated by multiplying the current condition of the vegetation (condition score) by the extent of native vegetation.

(DELWP Website i).

3 RESULTS

3.1 Ecological Vegetation Class

Ecological Vegetation Classes (EVCs) are the primary level of classification of vegetation communities within Victoria. An EVC contains one or more plant (floristic) community and represents a grouping of vegetation communities with broadly similar ecological attributes. Classification of EVCs in this report follows Oates and Taranto (2001).

The pre-1750 EVC mapping of the study area undertaken by DELWP (DELWP Website i) indicates that the study area was comprised of EVC 175 Grassy Woodland. EVC 175 Grassy Woodland is currently listed as ‘Endangered’ in the Otway Plains bioregion (DELWP website ii).

The current study records areas of partially intact vegetation that accords with EVC 175 Grassy Woodland within the study area.

Refer to Figure 2 for DELWP EVC mapping.

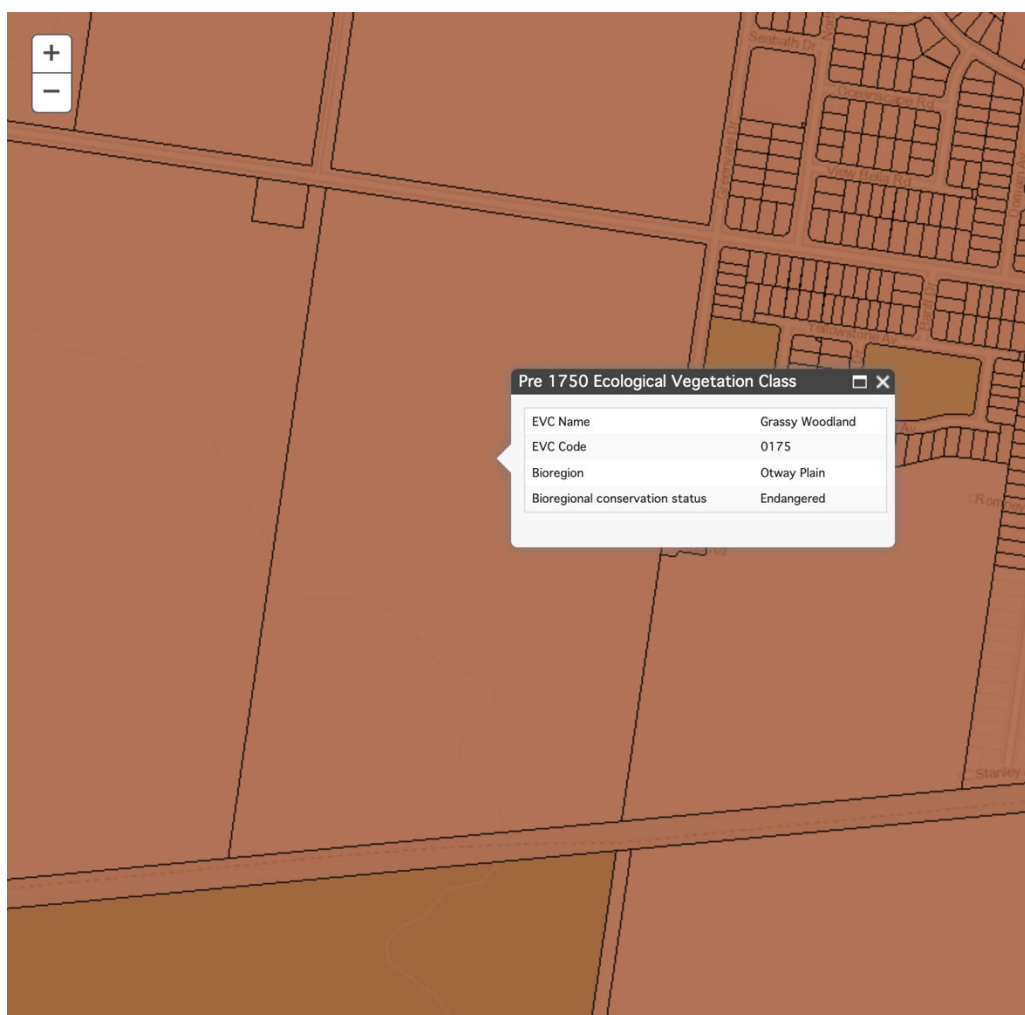


Figure 2. Distribution of EVCs pre-1750. Data by DELWP (DELWP Website i).

3.2 Flora

Three indigenous vascular plant species was recorded from the study area. Refer to Table 1 for a list of plant species recorded, including conservation significance. Refer to Table 2 for a list of dominant exotic plant species.

3.3 Vegetation Condition

The study area is dominated by exotic pasture grasses and ruderal weeds. These areas appear to have been subject to past and on-going disturbance, including pasture improvement. Rabbit grazing is prolific. Refer to Table 1 for a list of the indigenous plant species recorded during this study.

The areas of partially intact vegetation are comprised of the following:

- River Red Gum and Manna Gum mature tree specimens (scattered tree native vegetation) located on the subject property.
- Finger Rush at less than 25% cover value

Plantations of Tuart (*Eucalyptus gomphocephalum*), *Eucalyptus* spp and *Pinus* spp also occur.

A largely modified drainage line that flows from the south to the west that incorporates a formed farm dam is comprised entirely of exotic vegetation and bare earth. Consequently, this area likely has negligible ecological values.

Areas of relatively intact native vegetation occur on the adjacent Bellarine Rail trail, located to the south.

Refer to Plates 1-3 for photographs of the vegetation. Refer to Figure 4 for the location of native vegetation.

Table 1 Indigenous Vascular Plant Species, significance and location

Botanical Name	Common Name	Significance
<i>Eucalyptus camaldulensis</i>	River Red Gum	Local
<i>Eucalyptus viminalis</i>	Manna Gum	Local
<i>Juncus subsecundus</i>	Finger Rush	Local

Table 2 Exotic Vascular Plant Species

Botanical Name	Common Name
<i>Bromus</i> sp	Brome Grass
<i>Cynodon dactylon</i>	Couch Grass
<i>Dactylis glomeratus</i>	Cock's-foot
<i>Ehrharta erecta</i>	Panic Veltd-grass
<i>Galenia pubescens</i>	Blanket Weed
<i>Lolium</i> sp	Rye-grass
<i>Lycium ferrocissimum</i>	Boxthorn
<i>Nassella trichotoma</i>	Serrated Tussock
<i>Phalaris aquatica</i>	Canary-grass
<i>Pinus spp</i>	Pine
<i>Polygonum aviculare</i>	Knotweed
<i>Solanum linneaum</i>	Apple of Sodom
<i>Trifolium</i> sp	Clover

3.4 Trees

River Red Gum and Manna Gum trees, assessed as scattered tree native vegetation, were recorded. Refer to Table 3 for tree data, including species, locations status, DBH (Diameter at Breast Height in centimetres) and TPZ (Tree Protection Zone in metres). Refer to Figure 4 for the location of native vegetation.

Table 3 Trees recorded in the study area, including Status, Diameter at Breast Height and Tree Protection Zone

Tree #	Botanical Name	Common Name	Status	DBH (cm)	TPZ (m)
136 (A)	<i>Eucalyptus viminalis</i>	Manna Gum	ST	160	19.2
95 (B)	<i>Eucalyptus camaldulensis</i>	River Red Gum	ST *	62	7.4
94 (C)	<i>Eucalyptus camaldulensis</i>	River Red Gum	ST	78	9.4
91 (D)	<i>Eucalyptus camaldulensis</i>	River Red Gum	ST	94	11.3
92 (E)	<i>Eucalyptus camaldulensis</i>	River Red Gum	ST	88	10.6
90 (F)	<i>Eucalyptus camaldulensis</i>	River Red Gum	ST	91	10.9
89 (G)	<i>Eucalyptus camaldulensis</i>	River Red Gum	ST	68	8.2
93 (H)	<i>Eucalyptus camaldulensis</i>	River Red Gum	ST	74	8.9

* Possibly planted

Status ST – Scattered tree

Trees are numbered as per the Cardno Plan of Tree Survey 2022 and with letters (A, B, C etc.) as per Figure 4 and Appendix 3 of this report.

Determining the Tree Protection Zone (TPZ)

The radius of the TPZ is calculated for each tree by multiplying its DBH x 12. TPZ = DBH x 12 (Australian Standard AS4970-2009 *Protection of trees on development sites*). Where DBH = trunk diameter measured at 1.4 metres above ground. Radius is measured from the centre of the main stem at ground level. A TPZ should not be less than 2 metres no greater than 15 metres (except where crown protection is required.). (refer to Appendix 2).

3.5 Significant Flora

No National, State or Regional significant plant species were recorded. The three indigenous plant species are of Local conservation significance. Refer to Table 1 for significance listing. Refer to Appendix 1 for the rationale for assessing significance.

4 Native Vegetation Permitted Clearing Regulations

Under Particular Provision (Native Vegetation Clause 52.17) the State has gazetted the Native Vegetation Permitted Clearing Regulations, revised in December 2017. The Native Vegetation Permitted Clearing Regulations introduce a risk-based approach to assessing applications to remove native vegetation.

The objective for the permitted clearing of native vegetation is that it results in no net loss. This means permitted clearing has a neutral impact on Victoria's biodiversity.

The purpose of Clause 52.17 is to ensure that there is no net loss to biodiversity as a result of the removal, destruction or lopping of native vegetation. This is achieved by applying the following three step approach in accordance with the *Guidelines for the removal, destruction or lopping of native vegetation* (Department of Environment, Land, Water and Planning, 2017):

1. Avoid the removal, destruction or lopping of native vegetation.
2. Minimise impacts from the removal, destruction or lopping of native vegetation that cannot be avoided.
3. Provide an offset to compensate for the biodiversity impact if a permit is granted to remove, destroy or lop native vegetation.

To manage the removal, destruction or lopping of native vegetation to minimise land and water degradation. (DELWP Website i).

When native vegetation removal is permitted, an offset must be secured which achieves a no net loss outcome for biodiversity. To achieve this the offset makes a contribution to Victoria's biodiversity that is equivalent to the contribution made by the native vegetation that was removed. The type and amount of offset required depends on the native vegetation being removed and the contribution it makes to Victoria's biodiversity.

Implications for the current proposal are discussed as follows. Refer to Figure 3 for Location mapping (DELWP data).

Figure 3



Figure 3. Distribution of vegetation according to ‘Location’. Light green equates to ‘Location 1’ (i.e. lowest risk), Dark green equates to Location 2 (medium risk) (DELWP Website i). The native vegetation is located within Locations 1 and 2.

4.1 Patch Native Vegetation

Under the Native Vegetation Permitted Clearing Regulations, any areas of patch native vegetation that are proposed to be removed are subject to protection/and or recruitment offsets, depending upon the characteristics of the site.

No areas of patch native vegetation were recorded.

4.2 Scattered Tree Native Vegetation

Under the Native Vegetation Permitted Clearing Regulations, any scattered tree native vegetation that is proposed to be removed are subject to protection/and or recruitment offsets, depending upon the characteristics of the site.

Scattered trees, that is, mature native canopy trees that exist outside of a patch, are also assessed under the Regulations. Within the Otway Plains bioregion, EVC 175 has *Eucalyptus* spp and *Allocasuarina* spp as ‘canopy trees’.

For practicality, a standard extent amount has been developed for scattered trees, based on the habitat hectare assessment method.

Eight scattered trees (native vegetation) were recorded.

4.3 Implications

The results show that the current native vegetation condition for the study area consists of eight scattered trees. Consequently, there would be implications for the removal of native vegetation under the Native Vegetation Permitted Clearing Regulations if a permit was sought to remove the trees.

In keeping with the requirements of the Regulations the DELWP Native Vegetation Information Management online tool (DELWP website v) has been utilized to generate a Native vegetation removal report (ID 327-20190409-010) to determine the assessment pathway and to calculate any vegetation offset requirements.

An application to remove all the recorded native vegetation would be assessed as assessed to be a detailed pathway application. A permit to remove some of the native vegetation (up to 7 trees) would be an intermediate pathway application.

Figure 4 Location of native vegetation

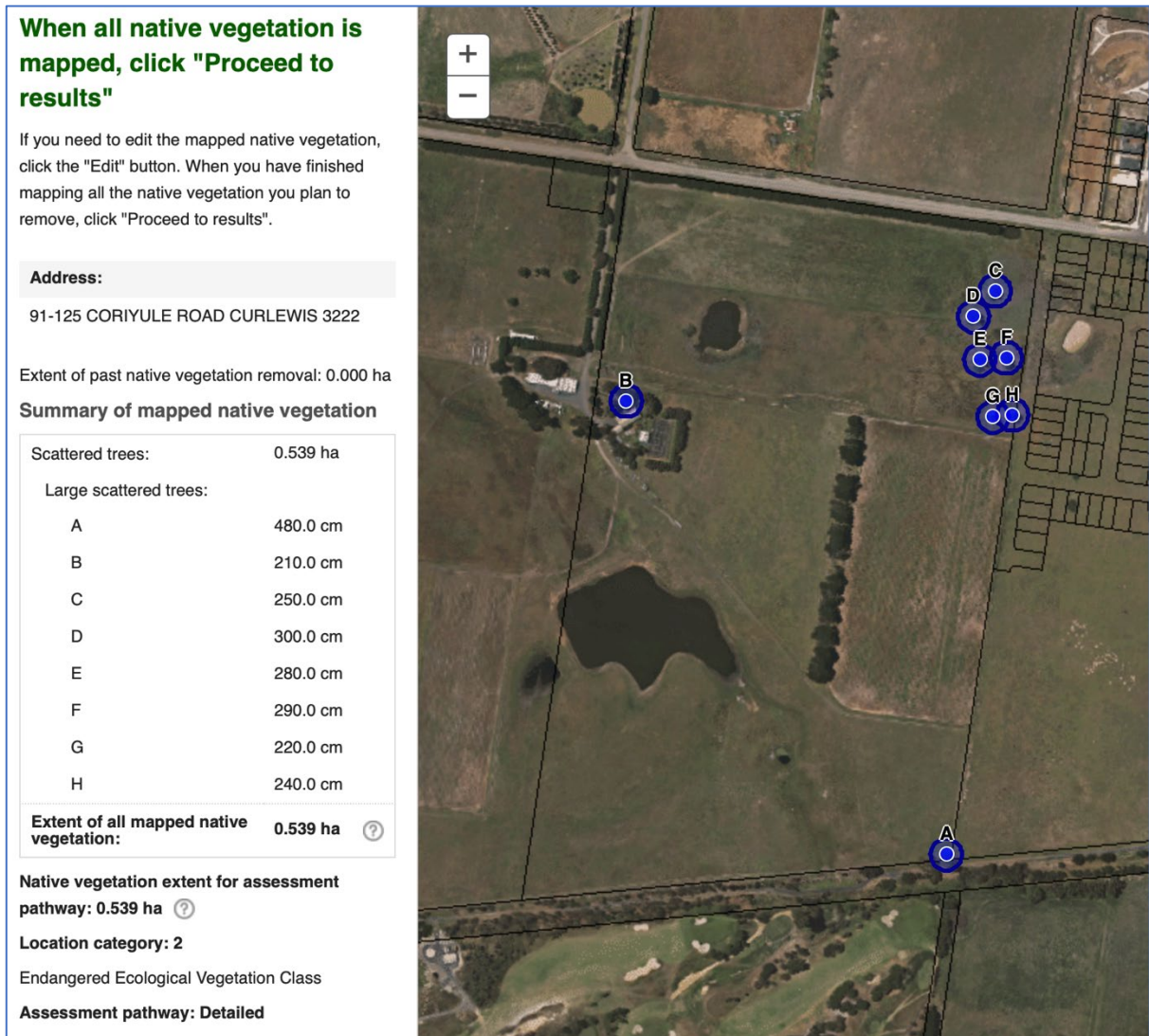


Figure 4. Location of native vegetation.

Refer to Appendix 3 for the Native vegetation removal report.

Refer to Plates 1-3 for photographs of the vegetation.

5 CONCLUSIONS

Description

The land at 91-125 Coriyule Road Curlewis, that is the subject of this report, has been subjected to past disturbance (agriculture, including pasture improvement) and mostly contains vegetation that is relatively degraded and dominated by exotic plant species. Habitat values within these areas are negligible.

Areas of native vegetation (mature River Red Gum and Manna Gum scattered trees) occur on the subject property.

The current study records areas of partially intact vegetation that accords with EVC 175 Grassy Woodland within the study area. EVC 175 Grassy Woodland is currently listed as 'Endangered' in the bioregion.

Implications

No State, National or Regionally significant plant species were recorded.

Should a permit to remove all the native vegetation recorded by this assessment be sought, the application would be a detailed pathway application. A permit to remove some of the native vegetation (up to 7 trees) would be an intermediate pathway application.

Limitations

There are not considered to be any significant limitations to this study.

Appendix 1 - ASSESSING CONSERVATION SIGNIFICANCE

Conservation significance is assessed at a range of scales, including global, international, national, state, regional and local. Criteria used for determining the conservation significance of flora and fauna at national to local scales are presented below for botanical and zoological conservation significance.

Botanical Significance

National botanical significance applies to an area when it supports one or more of the following attributes:

a population of at least one nationally threatened plant species listed by Briggs and Leigh (1996) or plant species listed on the schedules to the Commonwealth *Environment Protection and Biodiversity Conservation Act 1999*.

A nationally threatened ecological community listed on the schedules of the *Environment Protection and Biodiversity Conservation Act 1999*.

State botanical significance applies to an area when it supports one or more of the following attributes:

A population of at least one plant species threatened in Victoria, as listed by Gullan et al. (1990), NRE (2000a) or more recently in the unpublished records of the Flora Information System (NRE), or on the schedules to the Victorian *Flora and Fauna Guarantee Act 1988*.

An ecological community considered threatened in Victoria through its listing on the schedules of the *Flora and Fauna Guarantee Act 1988*.

Regional botanical significance applies to an area that supports one or more of the following attributes:

Supports a population of one or more regionally depleted species defined in a valid regional assessment of biodiversity (eg. Regional Native Vegetation Plan, Environment Conservation Council Report or Comprehensive Regional Assessment documents).

An ecological vegetation class that is considered endangered or vulnerable in a particular bioregion (based on Conn 1993 and the Regional Native Vegetation Plan), in which case the area is of **High Regional** significance.

An ecological vegetation class that is considered depleted in a particular bioregion (based on Conn 1993 and the Regional Native Vegetation Plan), in which case it is of **Regional** significance.

Local botanical significance applies to all remnant native vegetation that does not meet the above criteria. In much of Victoria native vegetation has been so depleted by past clearing and disturbance that all remaining vegetation must be considered to be of at least local conservation significance.

Appendix 2 Determining the Tree Protection Zone

Determining the Tree Protection Zone (TPZ)

The radius of the TPZ is calculated for each tree by multiplying its DBH x 12. TPZ = DBH x 12 (Australian Standard AS4970-2009 *Protection of trees on development sites*)

Where

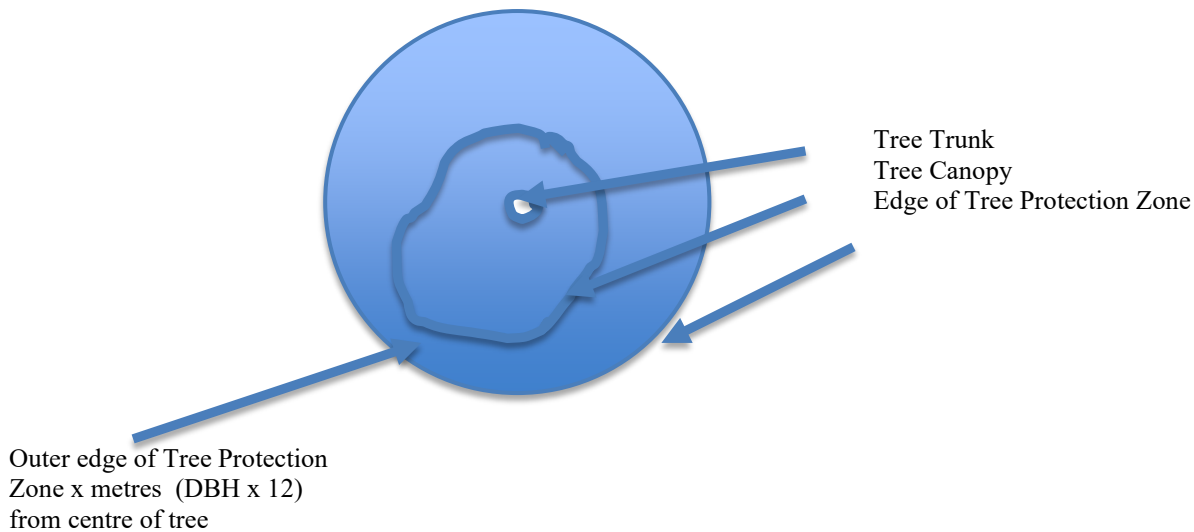
DBH = trunk diameter measured at 1.4 metres above ground.

Radius is measured from the centre of the stem at ground level.

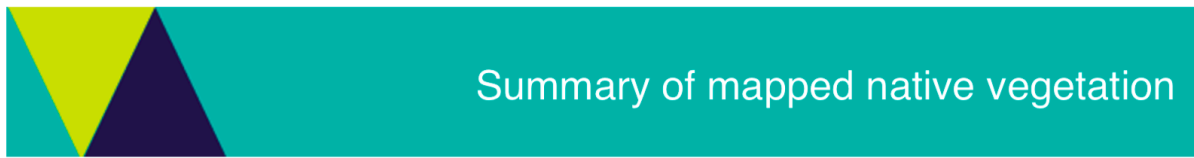
A TPZ should not be less than 2 metres no greater than 15 metres (except where crown protection is required). Some instances may require variations to the TPZ.

A tree is deemed to be impacted upon if greater than 10% of the TPZ area is to be disturbed.

Indicative Size of Tree Protection Zone



Appendix 3 Summary of Mapped Native Vegetation



The proposed native vegetation removal is in the Detailed Assessment Pathway

The proposed native vegetation removal is in the **Detailed Assessment Pathway**. You must appoint an accredited native vegetation assessor to complete a site assessment.

This report is a summary of native vegetation proposed to be removed, destroyed or lopped. **This report does not provide the information required for an application in accordance with Guidelines for the removal, destruction or lopping of native vegetation.** The report is not an assessment by DELWP of the proposed native vegetation removal.

Date and time: 09 April 2019 14:25 PM

Lat./Long.: -38.1764275280836,144.540395470198

Native vegetation report ID:

Address: 91-125 CORIYULE ROAD CURLEWIS
3222

327-20190409-010

Assessment pathway

The assessment pathway and reason for the assessment pathway

Assessment pathway	Detailed Assessment Pathway
Extent of past plus proposed native vegetation removal	0.539 hectares
No. large trees	8 large tree(s)
Location category	Location 2 The native vegetation is in an area mapped as an Endangered Ecological Vegetation Class. Removal of less than 0.5 hectares of native vegetation will not have a significant impact on any habitat for a rare or threatened species.

Summary of mapped native vegetation

Biodiversity information about the native vegetation

Description of any past native vegetation removal

Any native vegetation that was approved to be removed, or was removed without the required approvals, on the same property or on contiguous land in the same ownership, in the five year period before the application to remove native vegetation is lodged is detailed below.

Permit/PIN number	Extent of native vegetation (hectares)
None entered	0 hectares

Description of the native vegetation proposed to be removed

Extent of all mapped native vegetation	0.539 hectares
Extent of patches native vegetation	0.000 hectares
Extent of scattered trees	0.539 hectares
No. large trees within patches	0 large tree(s)
No. large scattered trees	8 large tree(s)
No. small scattered trees	0 small tree(s)

Additional information about trees to be removed, shown in Figure 1

Tree ID	Tree circumference (cm)	Benchmark circumference (cm)	Scattered / Patch	Tree size
A	480	126	Scattered	Large
B	210	126	Scattered	Large
C	250	126	Scattered	Large
D	300	126	Scattered	Large
E	280	126	Scattered	Large
F	290	126	Scattered	Large
G	220	126	Scattered	Large
H	240	126	Scattered	Large



Summary of mapped native vegetation

Next steps

This proposal to remove native vegetation must meet the application requirements of the Detailed Assessment Pathway specified in *Guidelines for the removal, destruction or lopping of native vegetation*. This native vegetation removal tool does not calculate offset requirements or produce a report containing required biodiversity information for an application in the Detailed Assessment Pathway. You need to appoint an accredited native vegetation assessor who will consult with the Department of Environment, Land, Water and Planning (DELWP), obtain the required report and help you complete your application.

Accredited native vegetation assessors are listed on the [DELWP web site](#).

© The State of Victoria Department of Environment, Land, Water and Planning Melbourne 2019.

This work is licensed under a Creative Commons Attribution 4.0 International licence. You are free to re-use the work under that licence, on the condition that you credit the State of Victoria as author. The licence does not apply to any images, photographs or branding, including the Victorian Coat of Arms, the Victorian Government logo and the Department of Environment, Land, Water and Planning logo. To view a copy of this licence, visit <http://creativecommons.org/licenses/by/3.0/au/deed.en>

Authorised by the Victorian Government, 8 Nicholson Street, East Melbourne.

For more information contact the DELWP Customer Service Centre 136 186

www.delwp.vic.gov.au

Disclaimer

This publication may be of assistance to you but the State of Victoria and its employees do not guarantee that the publication is without flaw of any kind or is wholly appropriate for your particular purposes and therefore disclaims all liability for any error, loss or other consequence which may arise from you relying on any information in this publication.

Obtaining this publication does not guarantee that an application will meet the requirements of Clauses 52.16 or 52.17 of planning schemes in Victoria or that a permit to remove native vegetation will be granted.

Notwithstanding anything else contained in this publication, you must ensure that you comply with all relevant laws, legislation, awards or orders and that you obtain and comply with all permits, approvals and the like that affect, are applicable or are necessary to undertake any action to remove, lop or destroy or otherwise deal with any native vegetation or that apply to matters within the scope of Clauses 52.16 or 52.17 of planning schemes in Victoria.





Summary of mapped native vegetation

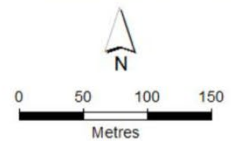
Figure 1 – Map of native vegetation to be removed, destroyed or lopped

Mapped native vegetation to be removed, lopped or destroyed



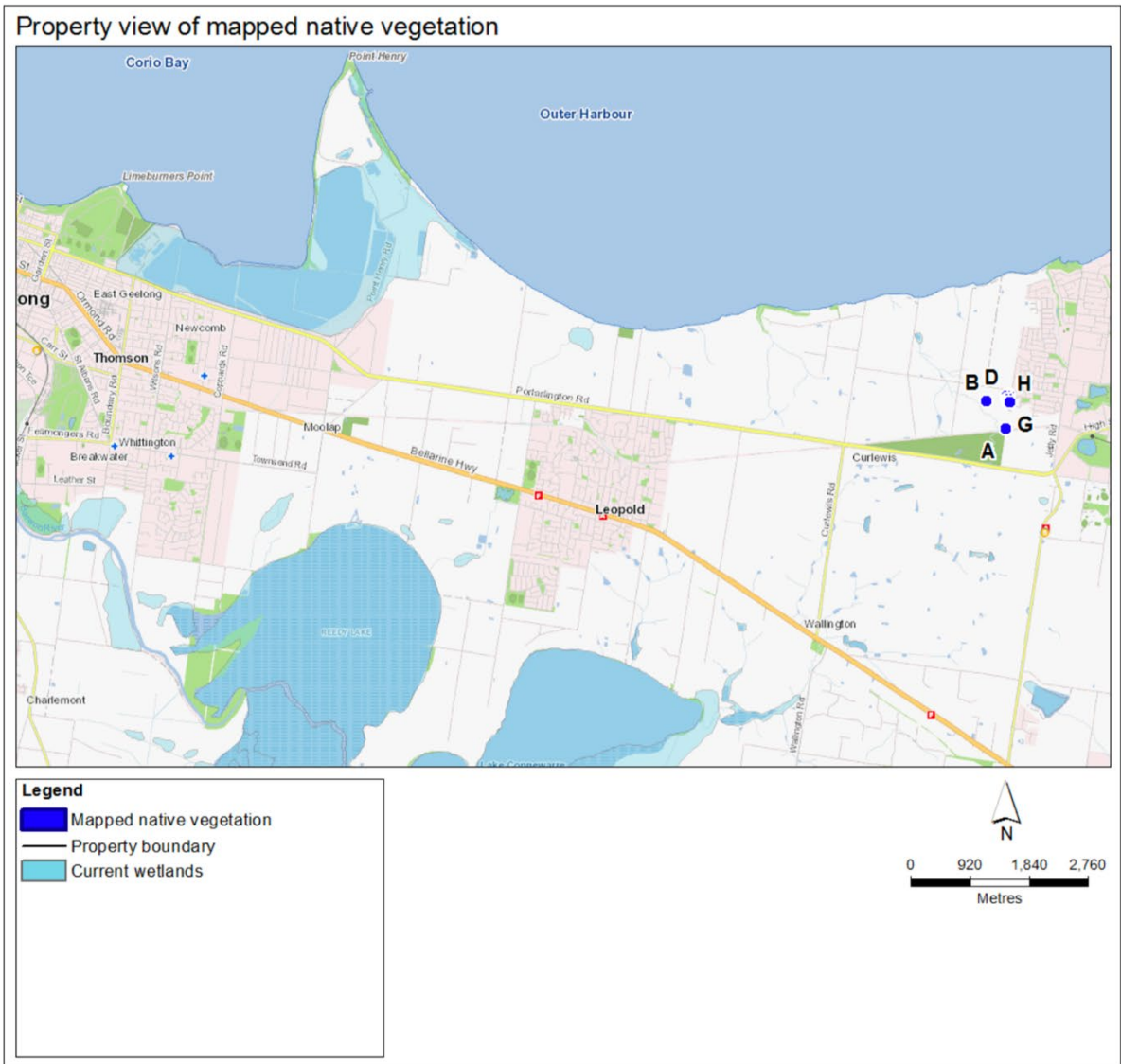
Legend

-  Mapped native vegetation
-  Property boundary



Summary of mapped native vegetation

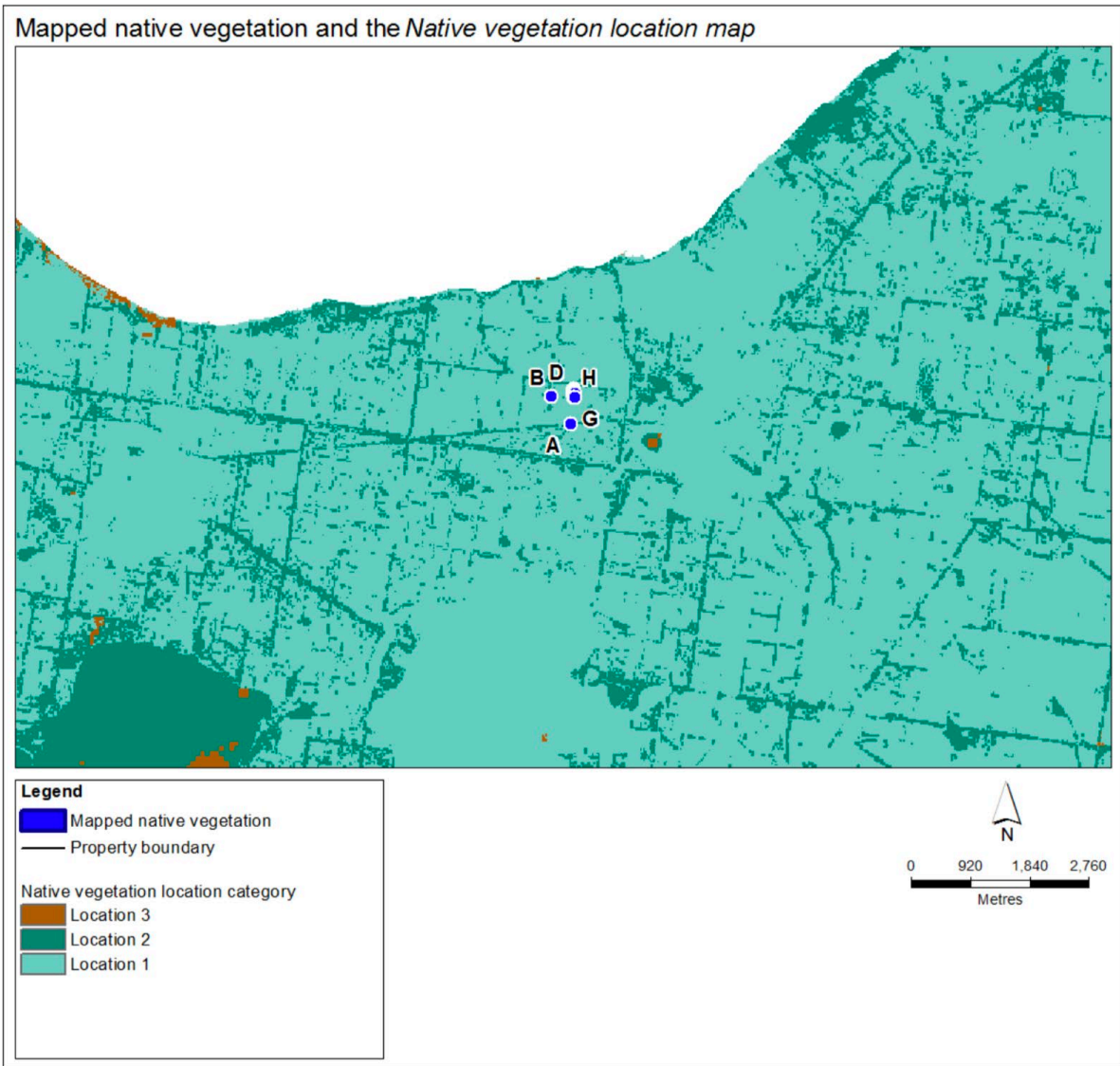
Figure 2 – Map of property in context



Native vegetation removal report – report ID 327-20190409-010

Summary of mapped native vegetation

Figure 3 – Biodiversity information maps



6 REFERENCES

Australian Standard AS4970-2009 *Protection of trees on development sites*)

Conn, B J (1993). Natural regions and vegetation of Victoria. Pp. 79-158 In Foreman, D B and Walsh, G (eds.) 'Flora of Victoria Volume 1: Introduction.' Inkata Press, Melbourne.

Corangamite Catchment Management Authority (2005). 'Corangamite Native Vegetation Plan' CCMA, Colac, Victoria.

DELWP website i.

<https://www.environment.vic.gov.au/native-vegetation/native-vegetation>

DELWP website ii..

<http://maps.biodiversity.vic.gov.au/viewer/?viewer=NatureKit>

DELWP website iii. Planning Maps Online.

<http://planningschemes.dpcd.vic.gov.au/schemes/geelong>

DELWP website iv. EVC Benchmarks.

<http://www.depi.vic.gov.au/environment-and-wildlife/biodiversity/evc-benchmarks>

DELWP website v. Native Vegetation Information Management tool.

<https://nvim.delwp.vic.gov.au/>.

Land.vic website i.

<http://services.land.vic.gov.au/maps/interactive.jsp>

Flora of Victoria Royal Botanic Gardens Melbourne

<https://vicflora.rbq.vic.gov.au>

Oates, A. & Taranto, M. (2001): 'Vegetation mapping of the Port Phillip & Westernport region' Arthur Rylah Institute for Environmental Research, DNRE, Victoria.

Parkes, D., Newell, G. & Cheal, D. (2003): 'Assessing the quality of native vegetation: The habitat hectares approach. Parks, Flora & Fauna Division, DNRE, Victoria.

Standards Australia (2009). *Protection of trees on development sites. AS4970-2009*. Standards Australia Ltd Sydney.

Walsh, N G and Stasjic, V (2007): 'A Census of the Vascular Plants of Victoria' Royal Botanic Gardens, Melbourne.

Walsh, N G & Entwisle, T (1994-1999): 'Flora of Victoria Vol 2-4' Inkata Press, Melbourne.

Plates 1-3 Vegetation Photographs



Plate 1. Tree # 136 Manna Gum. Bellarine Rail Trail at the rear.



Plate 2. Trees # 89-94 River Red Gum. Understorey exotic, fallow post grazing, typical conditions.



Plate 3. Drainage line and formed dam, exotic vegetation, typical conditions.