

Wathaurong Aboriginal Co-Operative

Tract

Landscape Concept Report

RFI - Town Planning Application

Prepared by Tract Consultants for Wathaurong Aboriginal Co-Operative



Acknowledgement

Tract acknowledge that the land on which we meet is and always has been Wathaurong Country. We pay our respects to their Elders past, present and future, and honour the ongoing deep spiritual connection that the Traditional Owners have with this land. We look forward to working together in a respectful and inclusive manner as we work towards reconciliation for a united and harmonious future for all Australians.



Quality Assurance

Wathaurong Aboriginal Co-Operative.
Landscape Master Report

Prepared for
Prepared for Wathaurong Housing
Co-Operative

Project Number
321-0678-00-L-01-RP03

Revisions

Issue	Date	Description	Prepared By	Reviewed By	Project Principal
03	06/03/2024	RFI Town Planning	BE	DC	DC
02	19/02/2024	RFI Town Planning	JG	DC	DC
01	22/09/2023	Issue for Town Planning	BE & JB	DC	DC
00	17 July 2023	Issue for Town Planning Application	BM & JB	DC	DC

Contents

Schematic Landscape Report

1	Background & Principles	04
2	Site Narrative	05
3	Landscape Masterplan	06
4	Planting	07-08
5	Detail Plan - Scar Tree / Ceremonial Space	09
6	Detail Plan - Yarning Circle	10
7	Precedent Imagery and Theming	11-12

1. Background & Principles

Tract's initial Landscape Opportunities Report (dated June 2022) identified a series of broad principles & opportunities for potential landscape improvements associated with the proposed redevelopment of Wathaurong Co-operative facilities:



1. Telling Wathaurong Stories - Integration of local stories and a narrative to be woven into the external spaces through the use of native plants, materials, sculpture & art



2. Respecting & Protecting Country - Retention of significant cultural elements such as the Scar Tree, and existing trees and vegetation



3. Caring and Repairing Country - Rehabilitation & Revegetation of the landscape to return the site to a more natural woodland setting



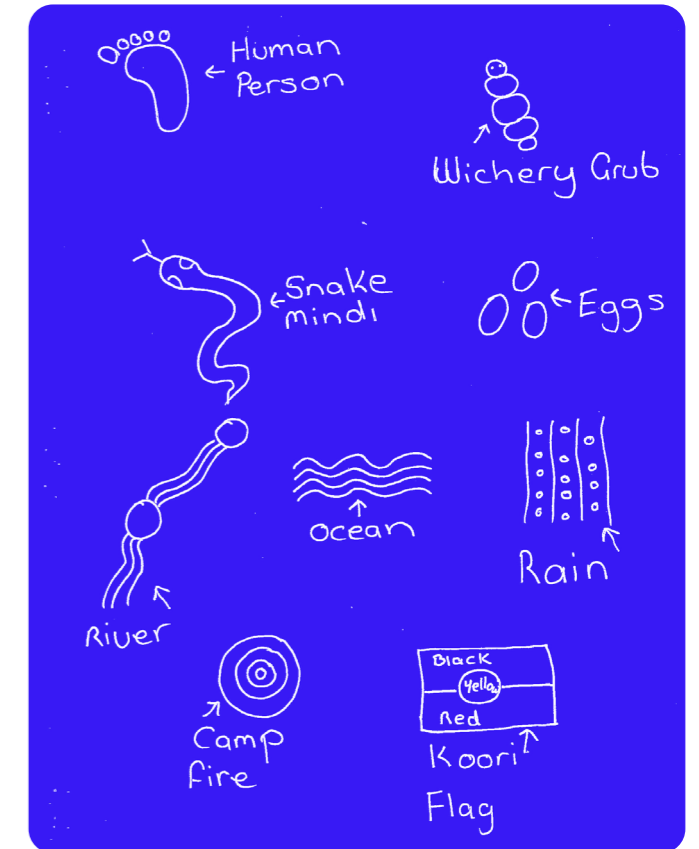
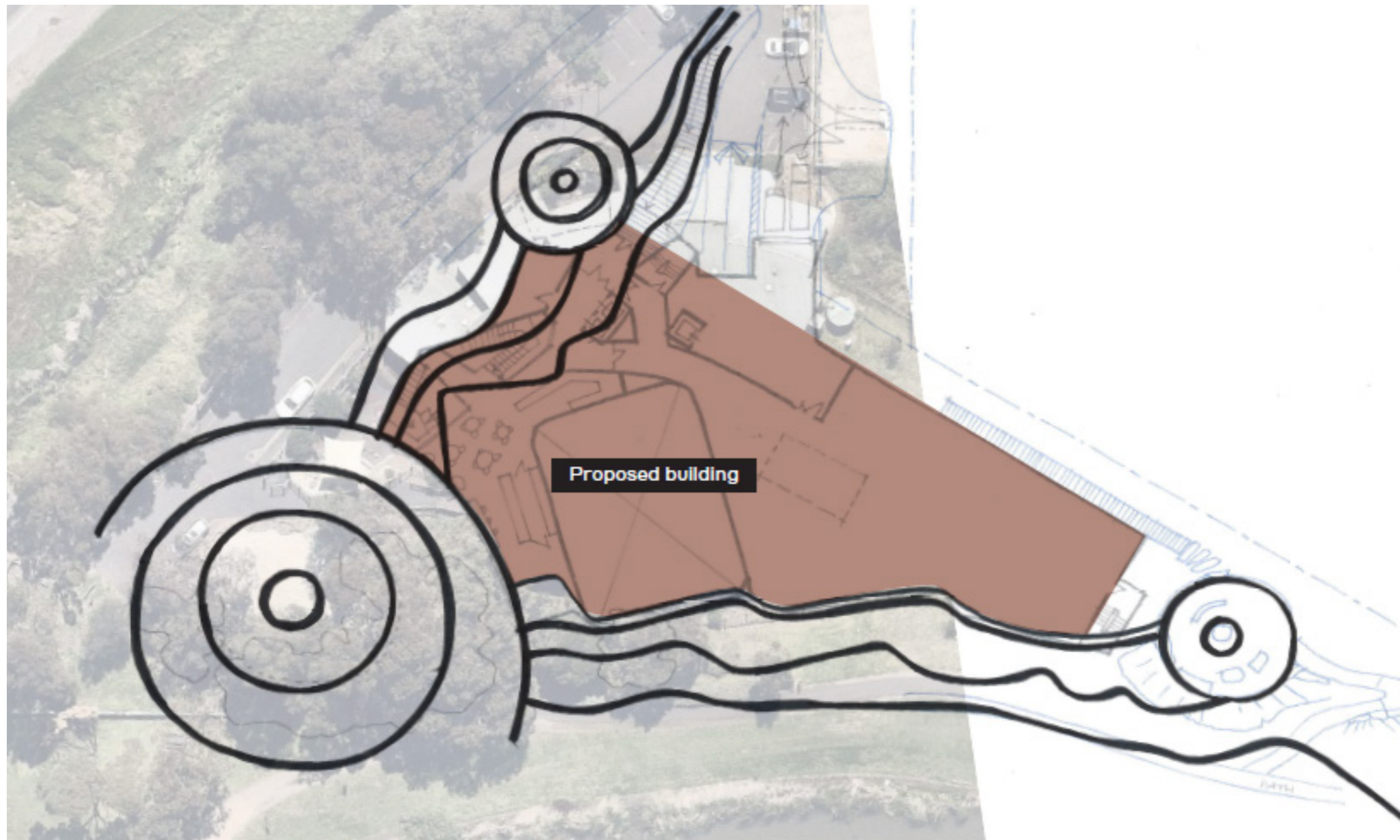
4. Engaging Wathaurong Community - Inviting community participation through community planting days and involvement of local artists and contractors



5. Engaging & Functional Spaces for Wathaurong People - Provision of both public as well as more private/secluded spaces which meet the needs of WAC staff and its clients




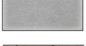








2. Site Narrative

- Integration of local stories and a narrative to be woven into the external spaces through use of native plants, materials, sculpture, and art
- Wathaurong unique relationship with water, land & sky. Symbolism of these elements to inform a meaningful site-specific story
- Opportunity to depict Wathaurong language & symbology in the landscape - i.e a series of circular spaces can be represented by elements joined by organic wavy line



3. Landscape Masterplan


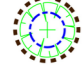

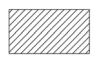


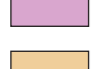

LEGEND

-  Title Boundary
-  Existing Trees to be retained
TPZ - Brown SRZ - Blue
Only high value trees indicated as per arborist report
-  Proposed Canopy Tree
-  Cowies Creek existing weed infested areas
To be managed by progressive herbicide spraying program to remove noxious species (Kikuyu etc.) and stabilisation of slopes in conjunction with revegetation using indigenous plant species
-  Proposed Infill Planting
-  Carpark planting
-  Proposed Raingarden/WSUD Bioretention basin
-  Proposed potential WSUD/Raingardens
Subject to detailed engineering design
-  Reconstructed bitumen roadway
-  Existing concrete parking slab to be retained
-  Feature Road pavement
Exposed Aggregate with decorative saw cut joints
-  New Road pavement
-  Proposed re-surfaced shared use trail
Using approved non-destructive construction method to minimise impact on high value trees - i.e. applied wetpour or emulsive surface subject to final agreed detail
-  New/realigned shared use trail
-  Proposed pavement
-  Proposed Flagstone Feature Pavement
Using locally sourced basalt stone material
-  Proposed Compacted Gravel Paving
-  Proposed Timber Decking
-  Proposed Rock Pitching
Using locally sourced basalt stone material
-  Curved Seatwall/benches
Backrests to meet Australian Standards
-  Proposed Feature Rocks as separation from vehicle zone
-  Proposed Bike Rails
-  New Lockable Gate
-  Proposed Pedestrian crossing feature linemarking



4. Planting

LEGEND

-  Title Boundary
-  Existing Trees to be retained
Only high value trees indicated as per arborist report
-  Existing Trees to be removed
Only high value trees indicated as per arborist report
-  Existing vegetation to be retained
Where practical, subject to detailed design and further Arborist assessment on case-by-case basis
-  Cowies Creek Revegetation
-  Site Infill Planting
-  Carpark Planting
-  WSUD/Raingarden/Bioretenion

Note: All plant stock to be local provenance



4. Planting

BOTANIC NAME	COMMON NAME	MATURE SIZE (HxW)	CONTAINER SIZE (min)	INSTALL SIZE (min)
COWIES CREEK REVEGETATION				
TREES				
<i>Acacia implexa</i>	Lightwood	5-15 x 4-7m	tubestock	
<i>Acacia mearnsii</i>	Black Wattle	8-25 x 6-10m	tubestock	
<i>Allocasuarina verticillata</i>	Drooping Sheoke	4-11 x 3-6m	tubestock	
<i>Eucalyptus camaldulensis</i>	River Red Gum	15-35 x 15-35m	tubestock	
<i>Eucalyptus leucoxylon ssp. Connata</i>	Yellow Gum	10-20 x 6-20m	tubestock	
SHRUBS				
<i>Acacia paradoxa</i>	Hedge Wattle	2-4 x 2-5m	tubestock	
<i>Acacia pycnantha</i>	Golden Wattle	3-10 x 2-5m	tubestock	
<i>Bursaria spinosa ver. macrophylla</i>	Sweet Bursaria	2-6 x 2-3m	tubestock	
<i>Eremophila deserti</i>	Turkey Bush	1-4 x 2m	tubestock	
<i>Goodenia ovata</i>	Hop Goodenia	1-2.5 x 1-3m	tubestock	
<i>Solanum laciniatum</i>	Kangaroo Apple	1-3 x 1-3m	tubestock	
GROUNDCOVERS / TUSSOCKS				
<i>Atriplex semibicatta</i>	Berry Saltbush	0.6 x 0.6m	tubestock	
<i>Chrysocephalum apiculatum</i>	Common Everlasting	0.3 x 1-2m	tubestock	
<i>Danthonia species</i>	Wallaby Grass	0.2 x 0.4-1m	tubestock	
<i>Dianella revoluta</i>	Black Anther Flax-lily	0.5 x 1.5-2.0m	tubestock	
<i>Poa labillardieri</i>	Tussock Grass	0.8 x 0.8m	tubestock	
<i>Stipa stipoides</i>	Spear Grass	0.3 x 1-2m	tubestock	
<i>Themeda triandra</i>	Kangaroo Grass	0.3 x 0.3m	tubestock	

SITE INFILL PLANTING				
TREES				
<i>Acacia implexa</i>	Lightwood	5-15 x 4-7m	45L	2.0m H 25mm min. Cal
<i>Allocasuarina verticillata</i>	Drooping Sheoke	4-11 x 3-6m	45L	2.0m H 25mm min. Cal
<i>Eucalyptus leucoxylon ssp. Connata</i>	Yellow Gum	10-20 x 6-20m	45L	2.0m H 25mm min. Cal
SHRUBS / GROUNDCOVERS / TUSSOCKS				
<i>Atriplex semibicatta</i>	Saltbush	0.6 x 0.6m	140mm pot	
<i>Carpobrotus rossii</i>	Karkalla	0.3 x 3.0m	140mm pot	
<i>Correa alba</i>	White Correa	1.5 x 3.0m	140mm pot	
<i>Correa reflexa</i>	Common Correa	0.3 x 1-2m	140mm pot	
<i>Chrysocephalum apiculatum</i>	Common Everlasting	0.3 x 1-2m	140mm pot	
<i>Dianella revoluta</i>	Black Anther Flax-lily	0.5 x 1.5-2.0m	140mm pot	
<i>Dichondra repens</i>	Kidney Weed	0.1-0.3 x 1-5m	140mm pot	
<i>Grevillea rosmarinifolia</i>	Rosemary Grevillea	1-3 x 2-3m	140mm pot	
<i>Hardenbergia violacea</i>	Purple Coral Pea	0.3 x 1-2m	140mm pot	
<i>Kennedia prostrata</i>	Running postman	0.2 x 1.2m	140mm pot	
<i>Leucophyta brownii</i>	Cushion Bush	0.2-1 x 2m	140mm pot	
<i>Lomandra 'Lime Tuff'</i>	Mat rush	1.0 x 2.0m	140mm pot	
<i>Myoporum parvifolium 'Fine leaf'</i>	Creeping Boobiolla	0.3 x 1.5m	140mm pot	
<i>Poa labillardieri</i>	Tussock Grass	0.8 x 0.8m	140mm pot	
<i>Poa poiformis</i>	Blue Tussock grass	0.2-0.9 x 1m	140mm pot	
<i>Viola hederacea</i>	Native Violet	0.2 x 1m	140mm pot	
<i>Westringia fruticosa</i>	Coastal Rosemary	0.4 x 1.5m	140mm pot	

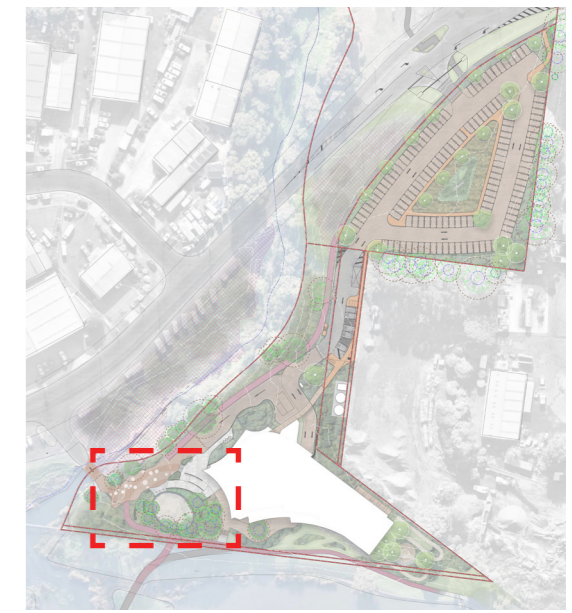
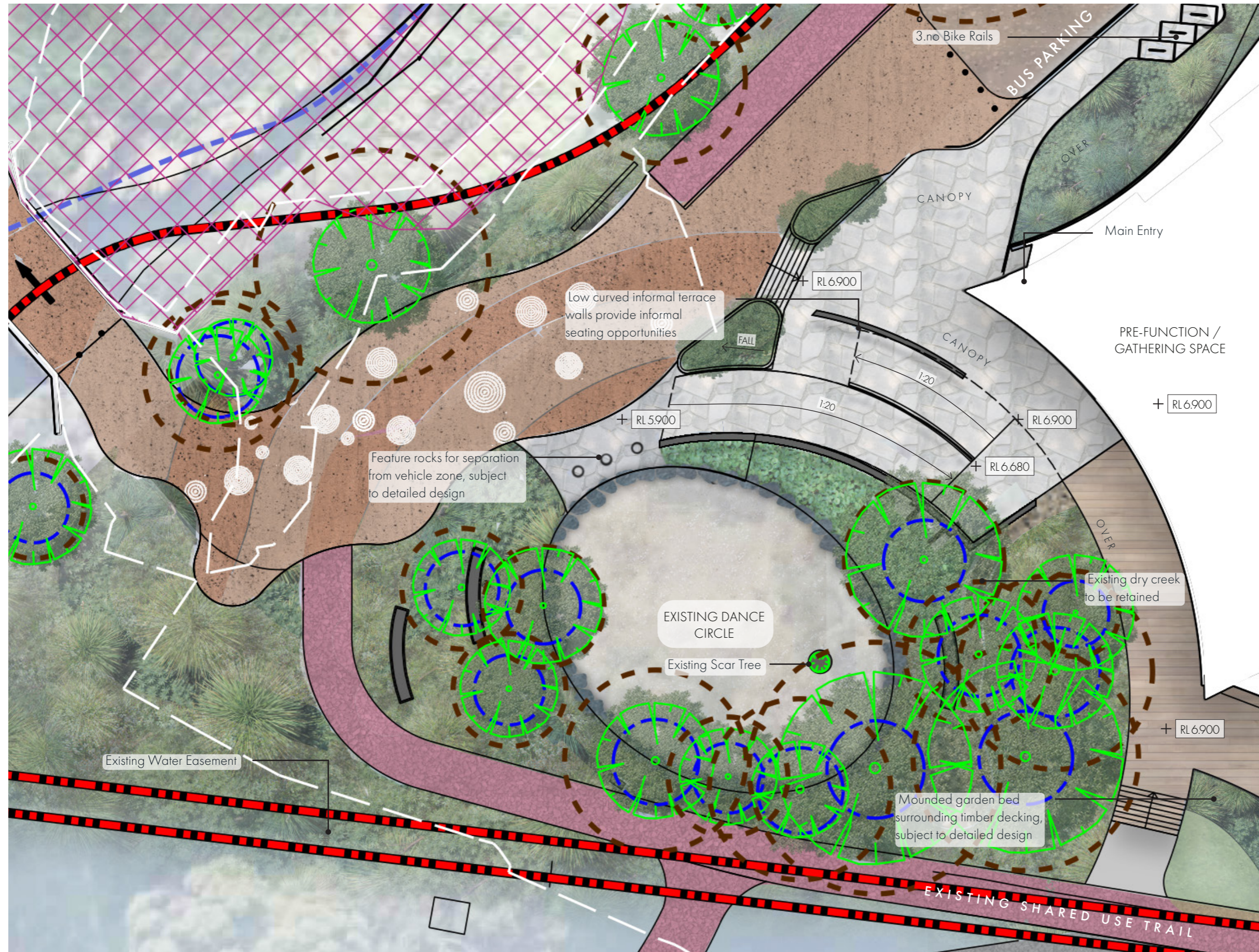
BOTANIC NAME	COMMON NAME	MATURE SIZE (HxW)	CONTAINER SIZE (min)	INSTALL SIZE (min)
CARPARK PLANTING				
TREES				
<i>Eucalyptus leucoxylon ssp. Connata</i>	Yellow Gum	10-20 x 6-20m	140mm pot	2.0m H 25mm min. Cal
SHRUBS / GROUNDCOVERS / TUSSOCKS				
<i>Carpobrotus rossii</i>	Karkalla	0.3 x 3.0m	140mm pot	
<i>Correa reflexa</i>	Common Correa	0.3 x 1-2m	140mm pot	
<i>Dianella revoluta</i>	Black Anther Flax-lily	0.5 x 1.5-2.0m	140mm pot	
<i>Grevillea rosmarinifolia</i>	Rosemary Grevillea	1-3 x 2-3m	140mm pot	
<i>Hardenbergia violacea</i>	Purple Coral Pea	0.3 x 1-2m	140mm pot	
<i>Poa labillardieri</i>	Tussock Grass	0.8 x 0.8m	140mm pot	
<i>Poa poiformis</i>	Blue Tussock grass	0.2-0.9 x 1m	140mm pot	
<i>Viola hederacea</i>	Native Violet	0.2 x 1m	140mm pot	
<i>Westringia fruticosa</i>	Coastal Rosemary	0.4 x 1.5m	140mm pot	
<i>Lomandra longifolia</i>	Mat rush	1.0 x 1.0m	140mm pot	

WSUD/RAINGARDEN/BIORETENTION				
GROUNDCOVERS / TUSSOCKS				
<i>Dianella revoluta</i>	Flax Lily	0.3-4 x 0.5-6m	tubestock	
<i>Carex tereticaulis</i>	Common Sedge	1.0 x 1.0m	tubestock	
<i>Eleocharis acuta</i>	Common Spike Rush	0.5 x 0.5m	tubestock	
<i>Ficinia nodosa</i>	Knobby Club-rush	1.5 x 0.6-2m	tubestock	
<i>Juncus australis</i>	Austral Rush	1.2 x 0.6m	tubestock	
<i>Poa labillardieri</i>	Tussock Grass	0.3-4 x 0.5-6m	tubestock	

EDIBLE/MEDICINAL PLANTING				
<i>Citrus australasica</i>	Finger Lime	4 x 2m	140mm pots	
<i>Santalum acuminatum</i>	Quandong	4 x 2m	140mm pots	
<i>Microseris lanceolata</i>	Murnong	0.3-4 x 0.5-6m	tubestock	
<i>Solanum aviculare</i>	Kangaroo Apple	0.3-4 x 0.5-6m	tubestock	
<i>Tetragonia implexicoma</i>	Bower Spinach	0.3-3 x 2m	tubestock	
<i>Backhousia citriodora</i>	Lemon Myrtle	5 x 3 m	140mm pots	

Note: All plant stock to be local provenance

5. Scar Tree / Ceremonial Space

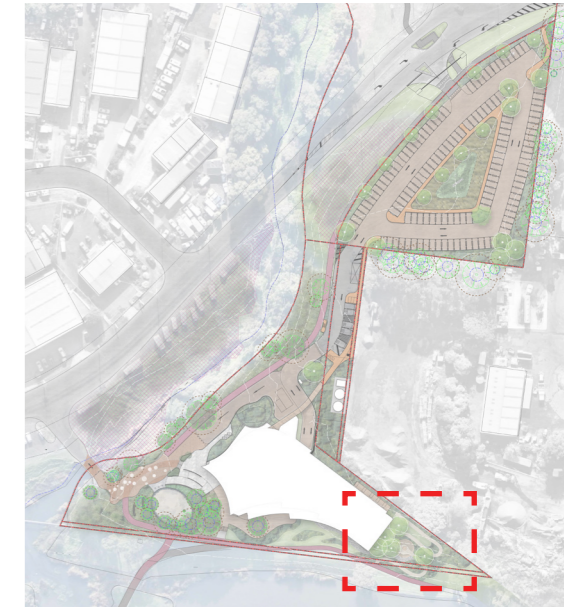
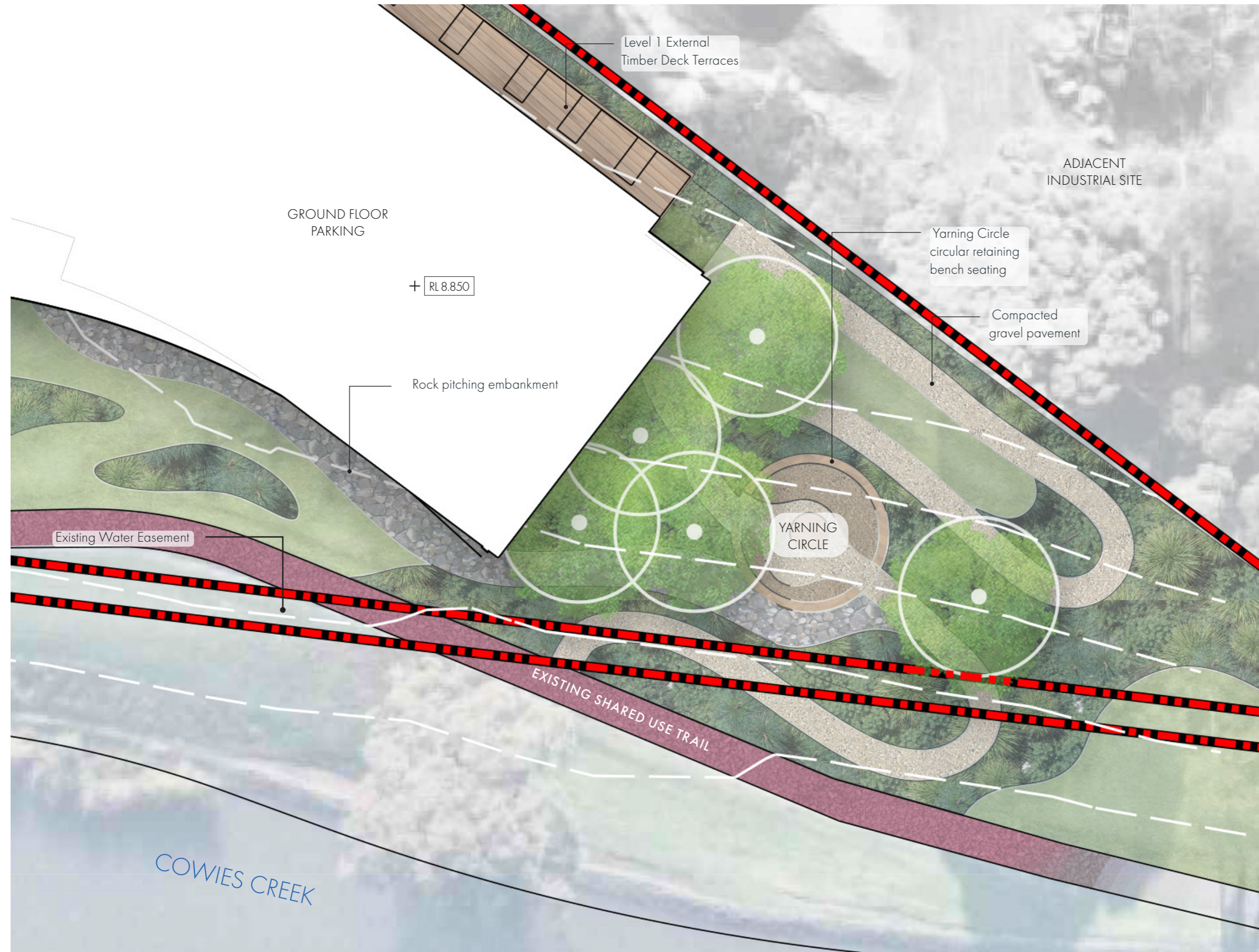


LEGEND

- Title Boundary
- Existing Trees to be retained
TPZ - Brown SRZ - Blue
Only high value trees indicated as per arborist report
- Proposed Infill Planting
- Proposed Raingarden
Subject to detailed engineering design
- Reconstructed bitumen roadway
- Feature Road pavement
Exposed Aggregate with decorative saw cut joints
- Flagstone Feature Pavement
- Proposed re-surfaced shared use trail
Using approved non-destructive construction method to minimise impact on high value trees - i.e. applied wetpour or emulsive surface subject to final agreed detail
- New/realigned shared use trail
- Proposed Timber Decking
- Proposed Pedestrian crossing feature linemarking
- Curved Seatwall/benches
Backrests to meet Australian Standards
- Proposed Feature Rocks as separation from vehicle zone
Subject to Detailed Design



6. Yarning circle

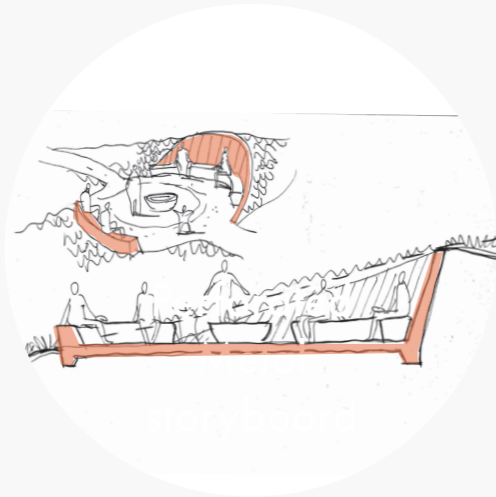


- LEGEND**
- Title Boundary
 - Proposed Canopy Tree
 - Proposed Infill Planting
 - Proposed Compacted Gravel Paving
 - Proposed Rock Pitching
Using locally sourced basalt stone material

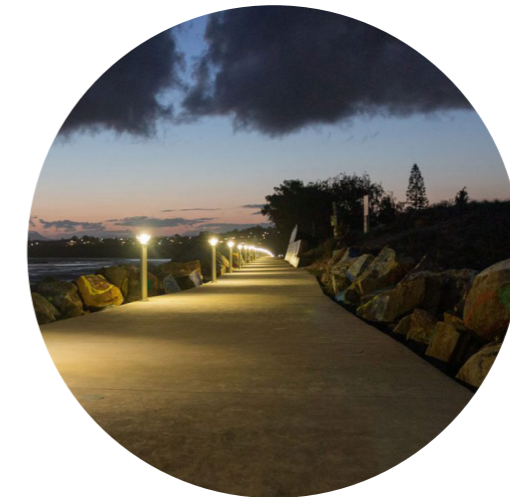
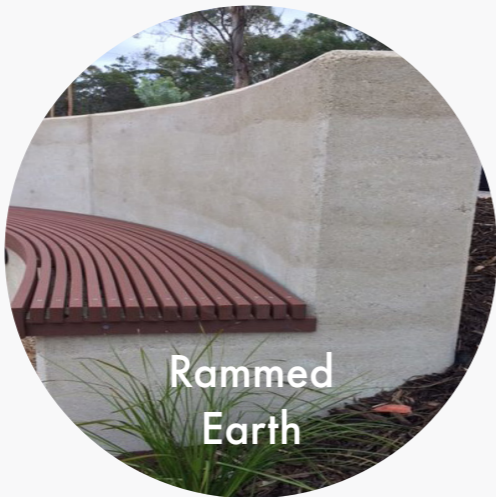
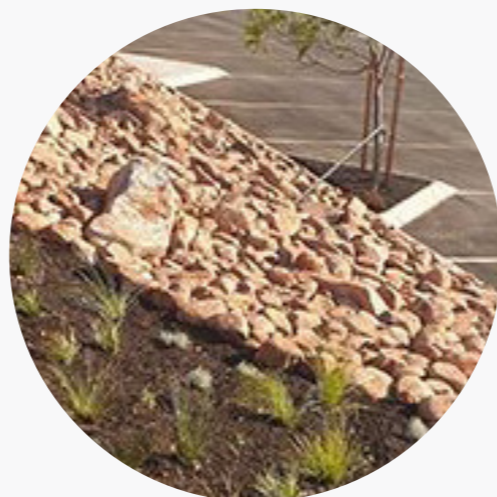


7a. Precedent Imagery and Theming

Scar Tree Ceremonial Space



Yarning Circle



Arrival & Circulation



7b. Precedent Imagery and Theming

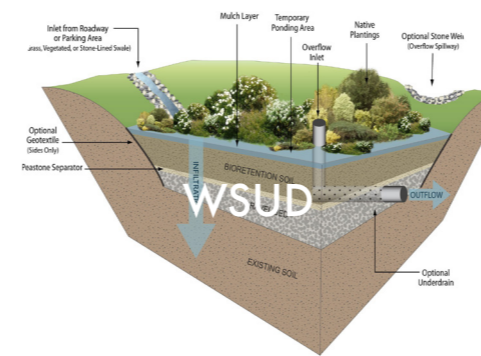
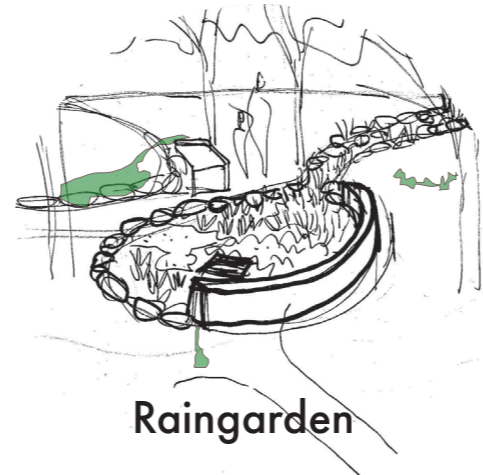
Nature play



Caring & Repairing Country
(Site Revegetation)



WSUD / Raingarden



Storytelling
Opportunities



Contact Tract

Geelong Office

Wadawurrung Country
39 Cheringhap Street, Geelong 3220
(03) 5221 0105
www.tract.com.au