

02.04

STRATEGIC FRAMEWORK PLANS

07/07/2022
C417ggee

The plans contained in Clause 02.04 are to be read in conjunction with the strategic directions in Clause 02.03.

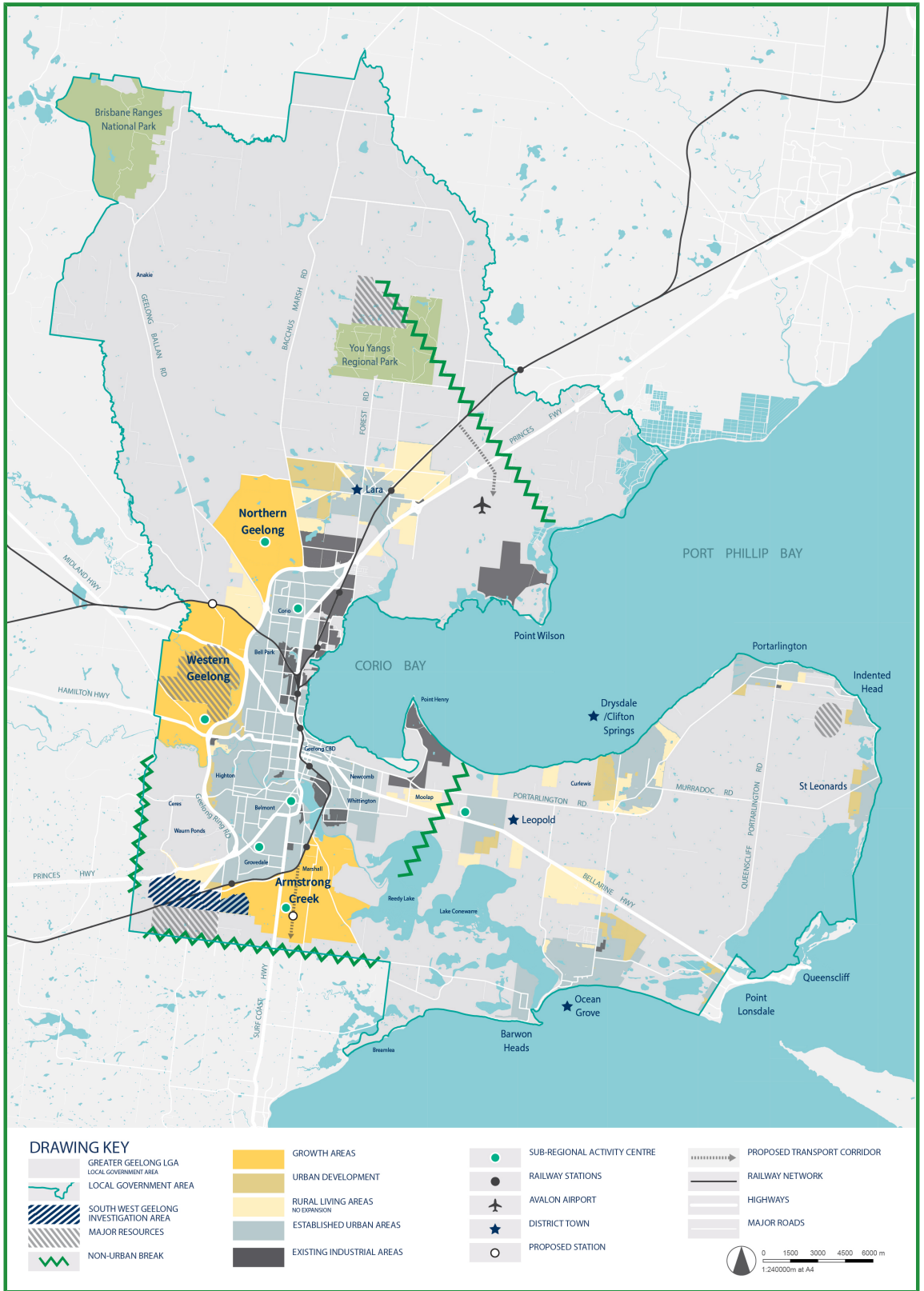
02.04-1

Municipal framework plan

07/07/2022
C417ggee Proposed C468ggee



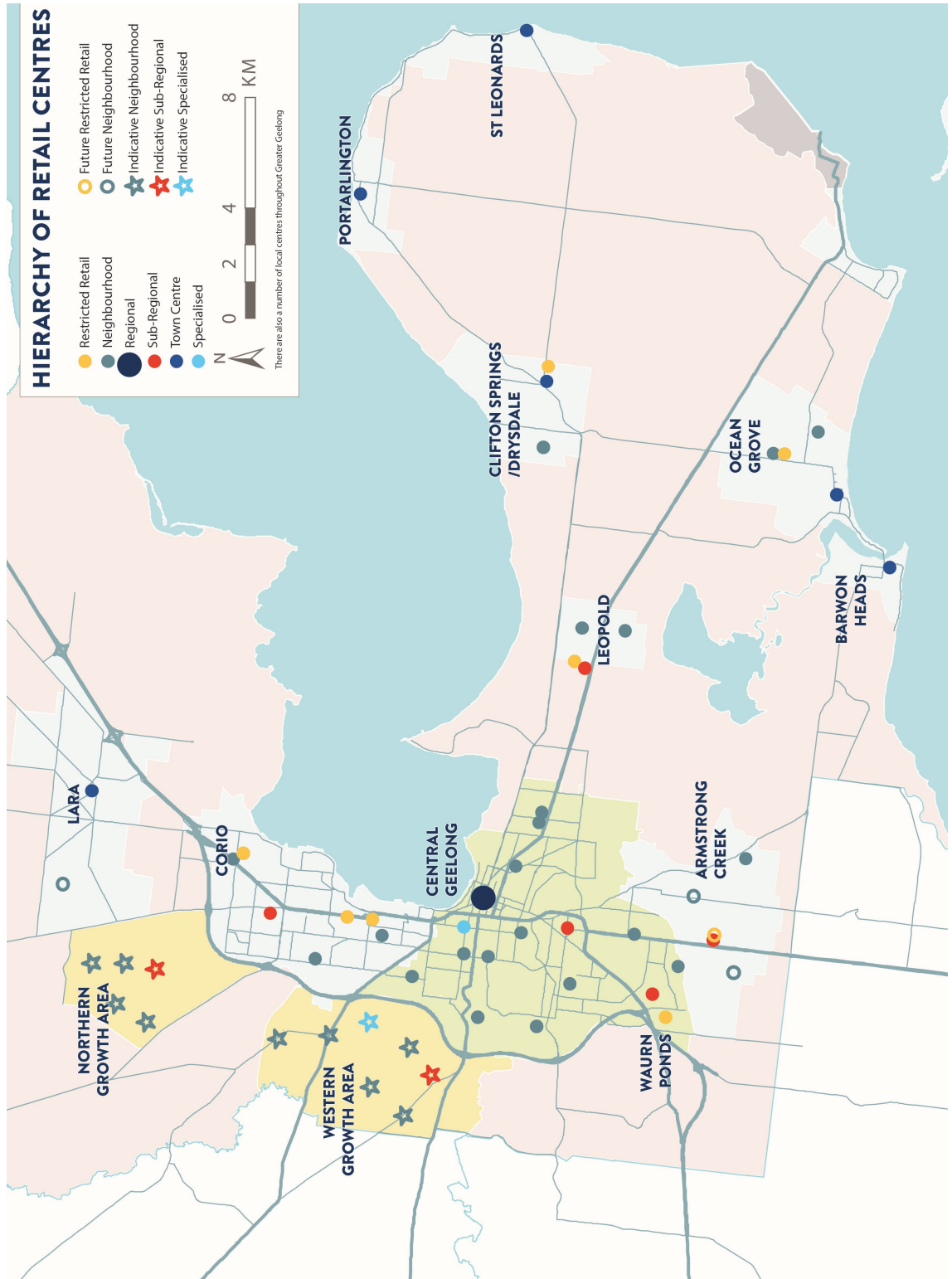
GREATER GEELONG PLANNING SCHEME



02.04-2

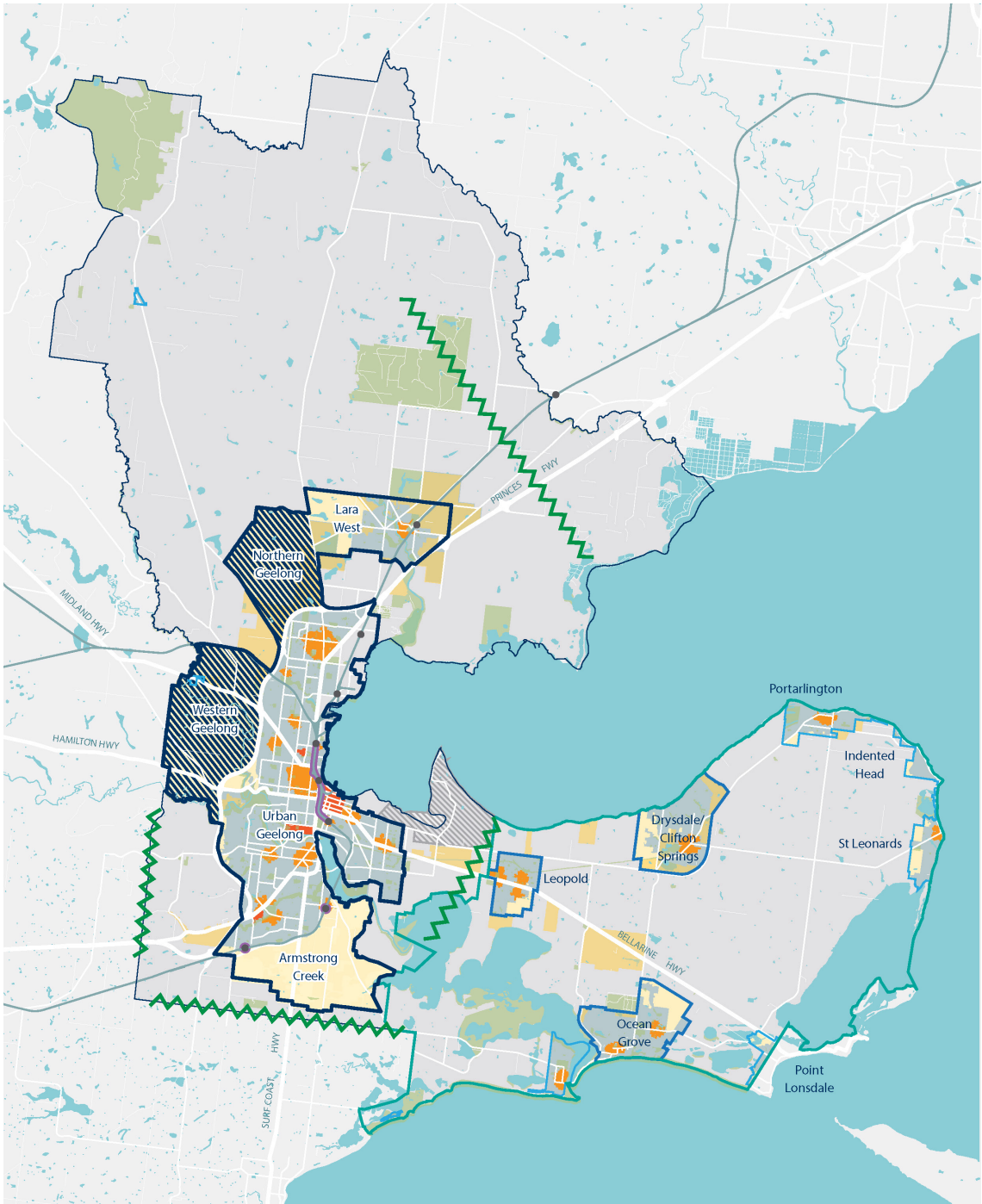
07/07/2022
C417ggee

Retail activity centre hierarchy



02.04-3
29/06/2023
C434ggee

Housing and settlement framework plan



DRAWING KEY

 GREATER GEELONG LGA LOCAL GOVERNMENT AREA	 INVESTIGATION AREA	 SETTLEMENT BOUNDARY URBAN GEELONG	 HIGHWAYS
 MUNICIPAL BOUNDARY	 RURAL LIVING AREAS NO EXPANSION	 DISTRICT TOWNS MODERATE HOUSING WITHIN SETTLEMENT BOUNDARY	 MAJOR ROADS
 STRENGTHEN LOCAL POLICY TO PRESERVE NON-URBAN BREAKS, RURAL LIVING FARMED LANDSCAPE AND GUIDE NEW DEVELOPMENT	 URBAN DEVELOPMENT	 LIMITED HOUSING GROWTH WITHIN SETTLEMENT BOUNDARIES	 RAIL NETWORK
 FUTURE GROWTH AREAS	 INCREASED HOUSING DIVERSITY AREAS HIGH AND MEDIUM DENSITY HOUSING	 NON-URBAN BREAK	 RAIL CORRIDOR INVESTIGATE HIGHER DENSITY HOUSING OPPORTUNITIES (EXCLUDING THE PORT ENVIRONS AREA)
	 KEY DEVELOPMENT AREAS MAJOR REDEVELOPMENT HIGH DENSITY HOUSING	 RAIL STATIONS	
	 ESTABLISHED URBAN AREAS MODEST INFILL HOUSING		